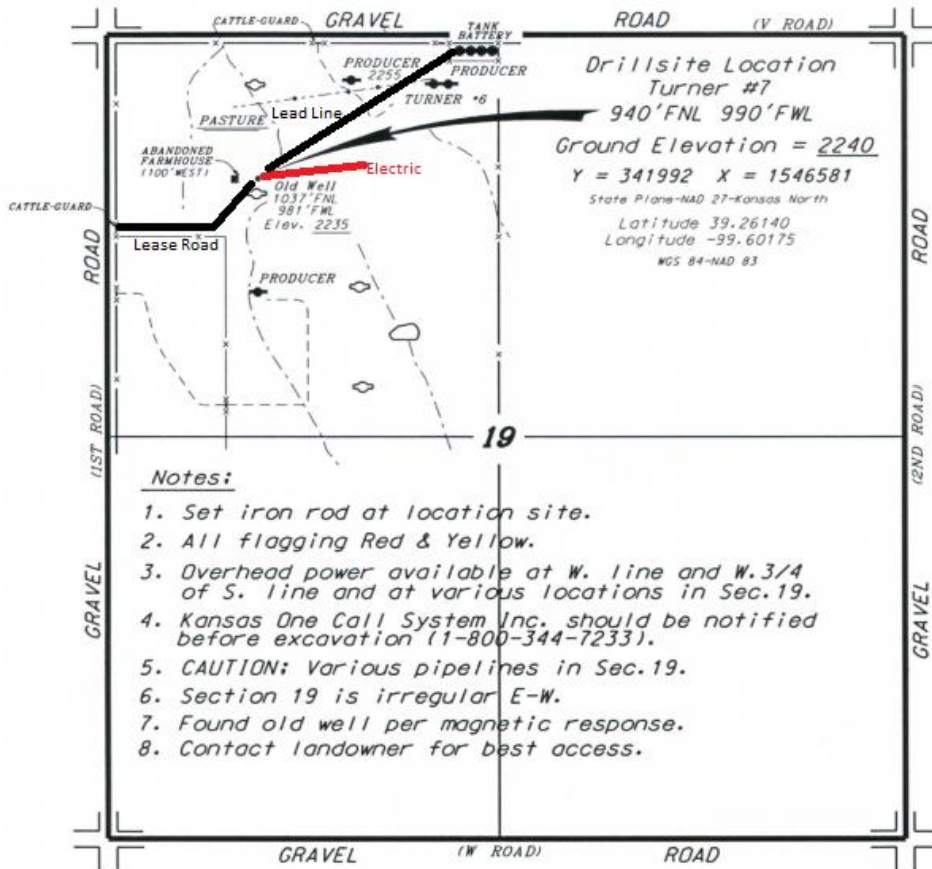


AMERICAN OIL, LLC
 TURNER LEASE
 NW. 1/4, SECTION 19, T9S, R20W
 ROOKS COUNTY, KANSAS



* Ingress and egress to location as shown on this plot is per usage only and may not be legally opened for public use. Contact appropriate federal and county road department for access.



* Controlling data is based upon the best maps and photographs available to us and upon a regular section of land containing 640 acres.