



Fall & Associates

Stake and Elevation Service

P.O. Box 222

Pretty Prairie, KS. 67570

785-243-7506

Date 5-24-18

Invoice Number 0523181

Murfin Drilling

1-36

Kamla

Operator

Number

Farm Name

Cheyenne-KS

36

2s

38w

330'FSL 990'FEL

County-State

S

T

R

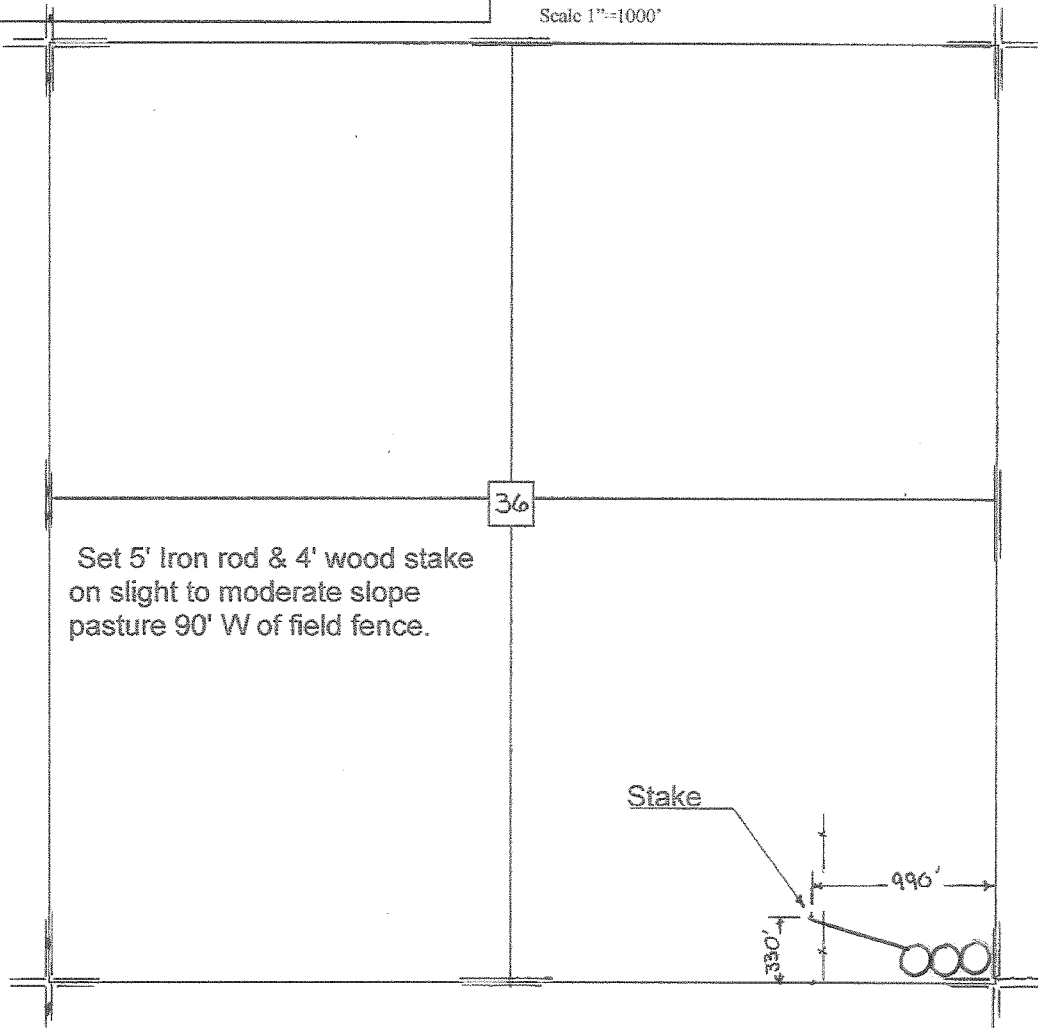
Location

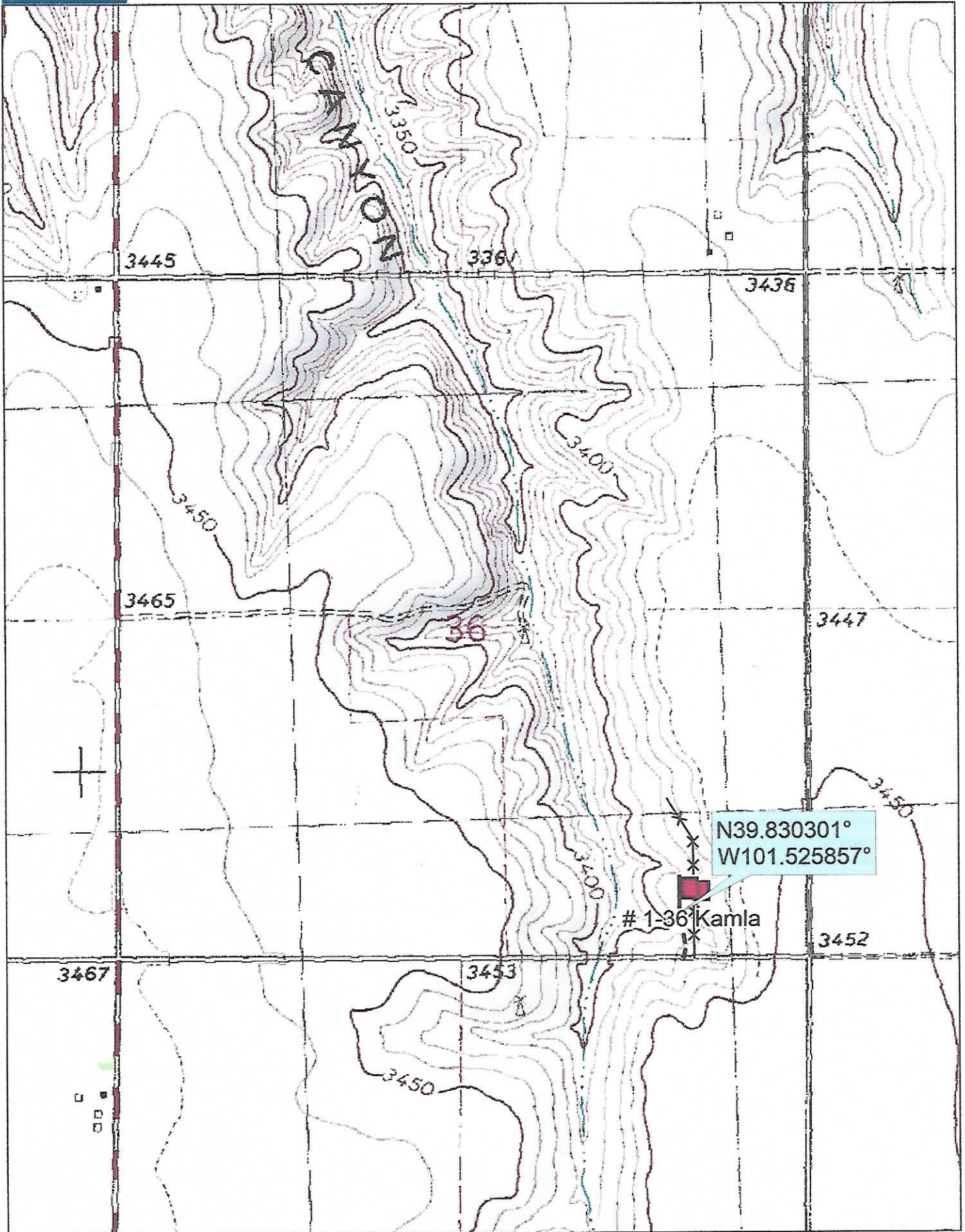
Murfin Drilling
250 Water Suite 300
Wichita, KS. 67202

Elevation 3415 Gr.

Ordered By: Shauna

Scale 1"=1000'

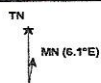




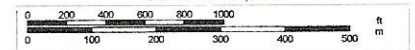
Data use subject to license.

© DeLorme. Topo North America™ 9.

www.delorme.com



Scale 1 : 12,000



1" = 1,000.0 ft

Data Zoom 13-1