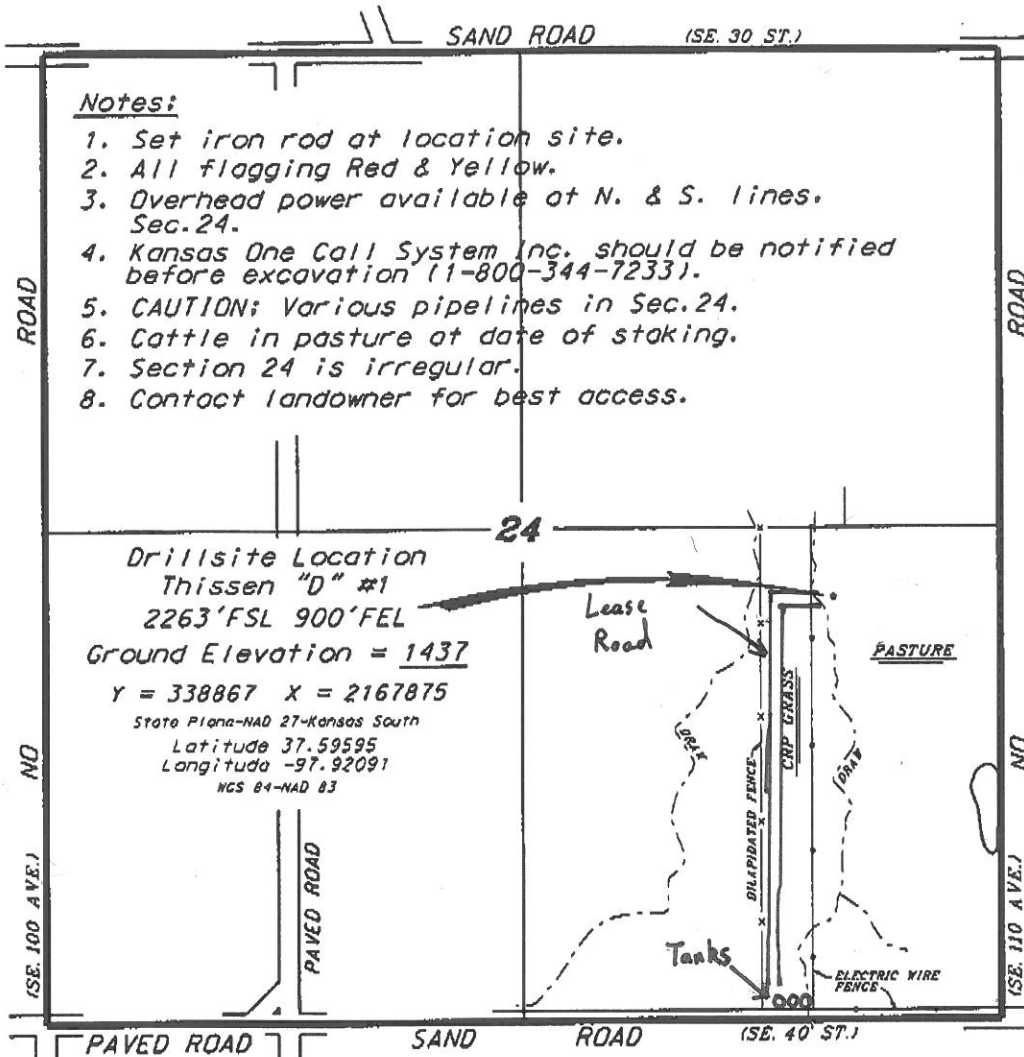


PICKRELL DRILLING COMPANY, INC.
THISSEN LEASE
SE. 1/4, SECTION 24, T28S, R6W
KINGMAN COUNTY, KANSAS



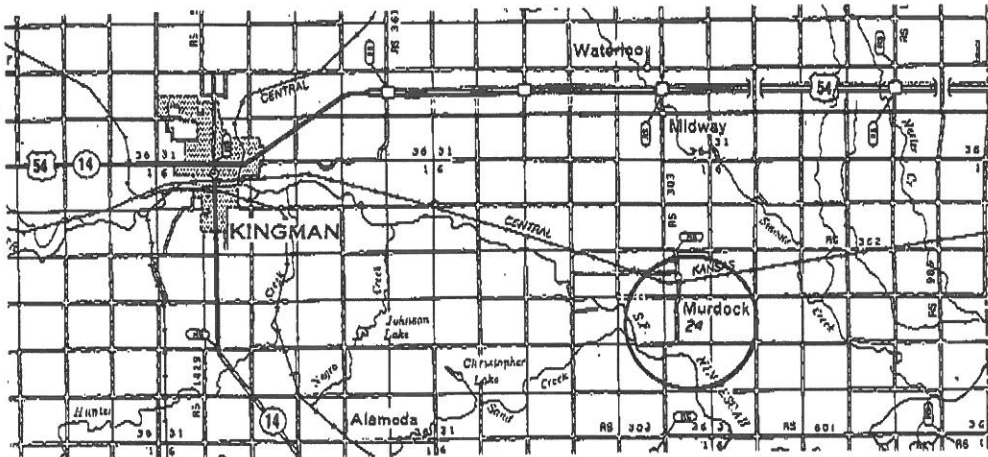
Notes:

1. Set iron rod at location site.
2. All flogging Red & Yellow.
3. Overhead power available at N. & S. lines. Sec. 24.
4. Kansas One Call System Inc. should be notified before excavation (1-800-344-7233).
5. CAUTION; Various pipelines in Sec. 24.
6. Cattle in pasture at date of staking.
7. Section 24 is irregular.
8. Contact landowner for best access.

* Ingress and egress to location as shown on this plat is per usage only and may not be legally opened for public use. Contact landowner, tenant and county road department for access.

24

Drillsite Location
Thissen "D" #1
2263' FSL 900' FEL
Ground Elevation = 1437
Y = 338867 X = 2167875
State Plane-NAD 27-Kansas South
Latitude 37.59595
Longitude -97.92091
NCS 84-NAD 83



Controlling data is based upon the best maps and photographs available to us and upon a regular section of land containing 640 acres.

Approximate section lines were determined using the normal standard of care of oilfield surveyors practicing in the state of Kansas. The section corners, which establish the precise section lines, were not necessarily located, and the exact location of the drillsite location in the section is not guaranteed. Therefore, the operator assuming this service and accepting this plat, and all other parties relying thereon agree to hold Central Kansas Oilfield Services, Inc., its officers and employees harmless from all losses, suits and expenses and any and all claims released from any liability from incidental or consequential damages.

Elevations derived from National Geodetic Vertical Datum.

Date May 25, 2018