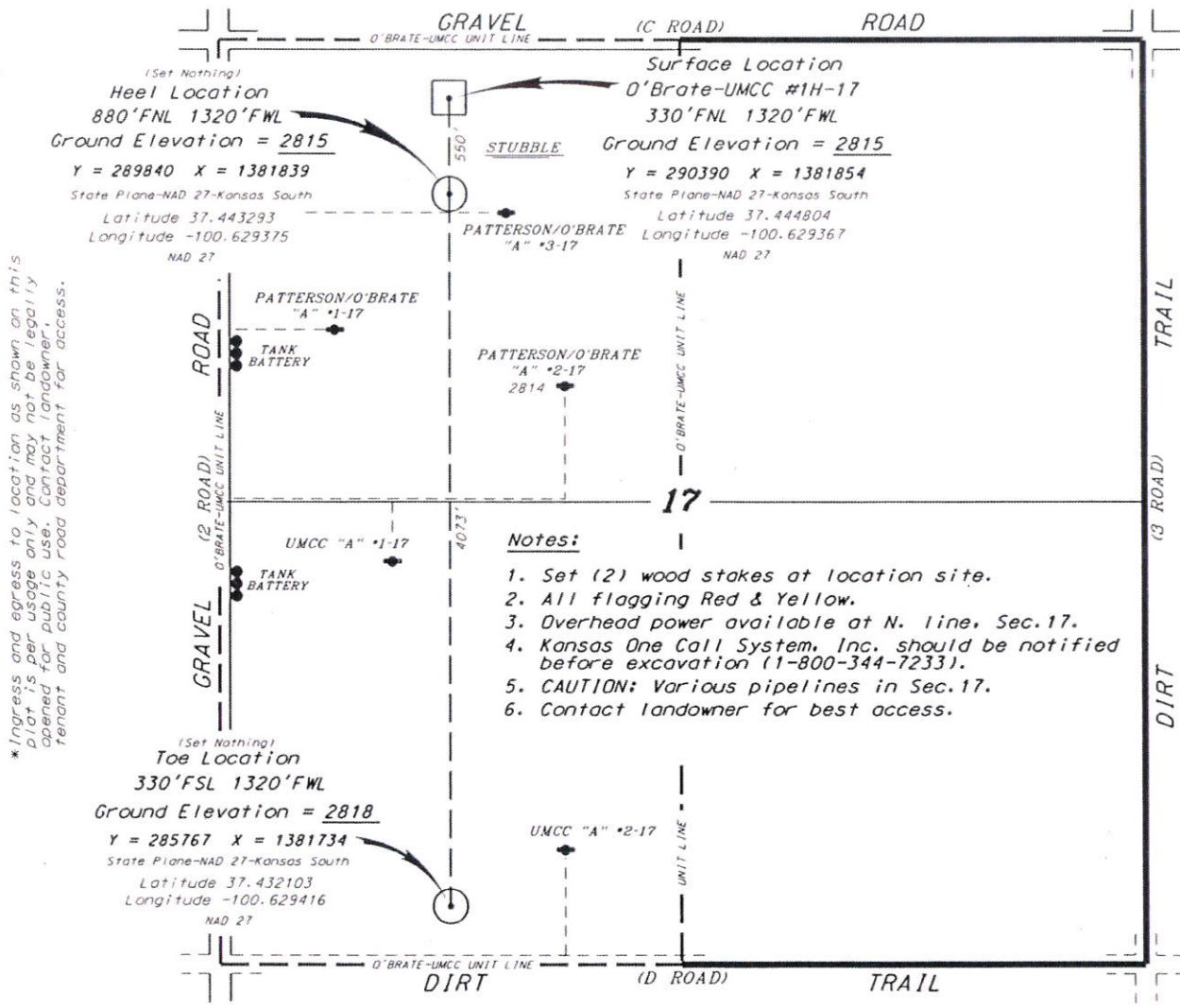


MCCOY PETROLEUM CORPORATION
 O'BRATE-UMCC LEASE
 W. 1/2, SECTION 17, T30S, R30W
 MEADE COUNTY, KANSAS



(Set Nothing)
Heel Location
 880'FNL 1320'FWL
 Ground Elevation = 2815
 Y = 289840 X = 1381839
 State Plane-NAD 27-Kansas South
 Latitude 37.443293
 Longitude -100.629375
 NAD 27

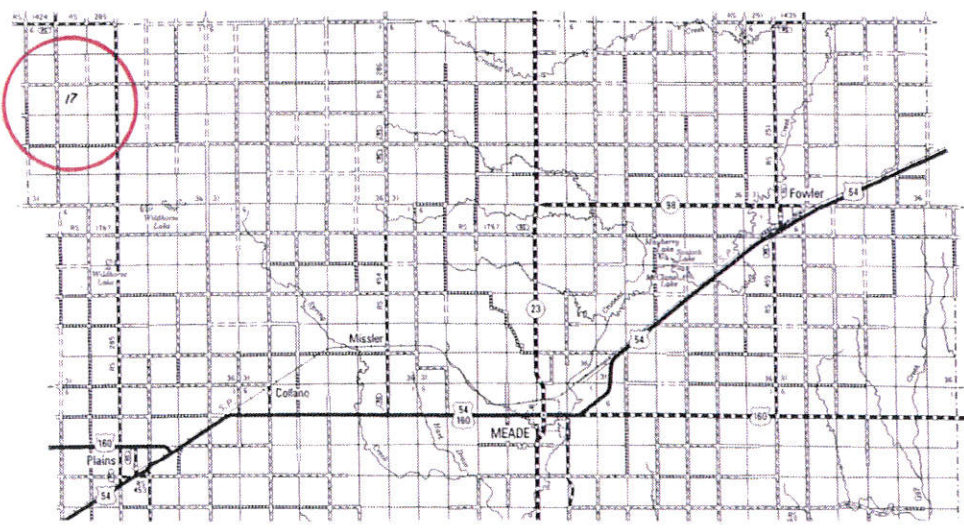
Surface Location
 O'Brate-UMCC #1H-17
 330'FNL 1320'FWL
 Ground Elevation = 2815
 Y = 290390 X = 1381854
 State Plane-NAD 27-Kansas South
 Latitude 37.444804
 Longitude -100.629367
 NAD 27

(Set Nothing)
Toe Location
 330'FSL 1320'FWL
 Ground Elevation = 2818
 Y = 285767 X = 1381734
 State Plane-NAD 27-Kansas South
 Latitude 37.432103
 Longitude -100.629416
 NAD 27

Notes:

1. Set (2) wood stakes at location site.
2. All flagging Red & Yellow.
3. Overhead power available at N. line, Sec.17.
4. Kansas One Call System, Inc. should be notified before excavation (1-800-344-7233).
5. CAUTION: Various pipelines in Sec.17.
6. Contact landowner for best access.

* Ingress and egress to location as shown on this plot is for usage only and may not be legally opened for public use. Contact landowner, tenant and county road department for access.



Controlling data is based upon the best maps and photographs available to us and upon a regular section of land containing 640 acres.
 Approximate section lines were determined using the normal standard of care of oilfield surveyors practicing in the state of Kansas. The section corners, which establish the precise section lines, were not necessarily located, and the exact location of the drillsite location in the section is not guaranteed. Therefore, the operator securing this service and accepting this plot and all other parties relying thereon agree to hold Central Kansas Oilfield Services, Inc., its officers and employees harmless from all losses, costs and expenses and sold entities released from any liability from incidental or consequential damages.
 Elevations derived from National Geodetic Vertical Datum.

Date May 31, 2018

