



**Kuhn New Gibson**

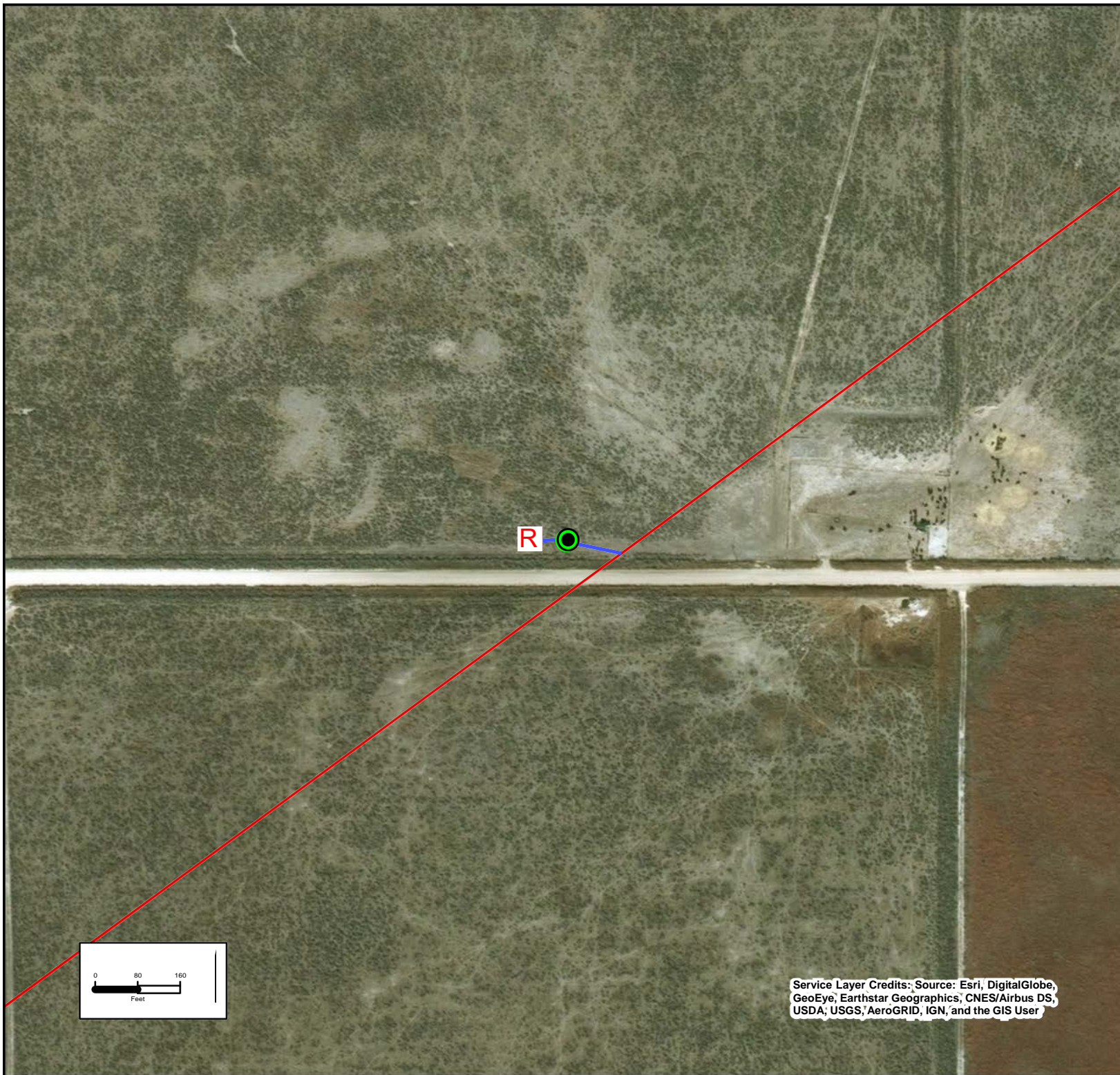
**Legend**

— Pipeline

Ⓜ Rectifier

● Deep Well Groundbed

Stevens County, KS  
Groundbed Location:  
77' from S section line  
2,031 from W section line  
1/4 SW, S29, T32S, R36W



The locations shown on the plat are preliminary non-binding estimates. Pipeline and Groundbed are below ground features. Rectifier is an above ground feature.

DRAWN BY: TT

CHECKED BY: RZ

DATE: 5/10/2018

Service Layer Credits: Source: Esri, DigitalGlobe, GeoEye, Earthstar Geographics, CNES/Airbus DS, USDA, USGS, AeroGRID, IGN, and the GIS User



Project No. 453333-002