

JERRY GREEN

CONSULTING GEOLOGIST

4350 Keystone Rd
 HAYS, KS 67601
 PHONE: 785-625-5155

GEOLOGIST'S REPORT DRILLING TIME AND SAMPLE LOG

COMPANY YELLOW DOG DRILLING LLC ELEVATIONS

LEASE BAUGHMAN 28-1 KB 1933'

FIELD RESERVOIR DF _____

LOCATION 1150'FWL 1450'FSL GL 1927'

SEC 28 TWSP 7S RGE 19W

COUNTY ROOKS STATE KS Measurements Are All From KB

CONTRACTOR ROYAL DRILG CASING SURFACE @ 263'

SPUD 5-9-18 COMP 5-18-18 PRODUCTION @ 5.5 @ 3486

RTD 3490 LTD 3491 ELECTRICAL SURVEYS

MUD UP 2700' TYPE MUD CHEM. dil/nd Micro Sonic

SAMPLES SAVED FROM 2700' TO TD

DRILLING TIME KEPT FROM 2700' TO TD

SAMPLES EXAMINED FROM 2700' TO TD

GEOLOGICAL SUPERVISION FROM 2700' TO TD

GEOLOGIST ON WELL 5-14 thru 5-17

FORMATION TOPS LOG SAMPLES

ANHY. 1395-1435 5381375-1415 558

TOPEKA 2886-952 2885 952

HEEBNER 3111-1178 3089 1156

TORONTO 3128-1195 3128-1195

L-KC 3340-1407 3342-1409

BKG. _____

ADDRESS 9386-1453 9386-1453

REMARKS

All parties involved recommended that pipe be set to test this well further

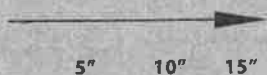
Respectfully submitted

LEGEND



DRILLING TIME IN MINUTES PER FOOT

Rate of Penetration Decreases



DEPTH	LITHOLOGY	SAMPLE DESCRIPTIONS	OIL SHOWS	REMARKS
2700'				
2750'				
2800'				
		has raffish - to Arg. Foss in pt however		

2850'

Gray shale

TOPEKA 2885-952

lms off wh - tw
Ft barren

2900'

-- "

2950'

lms wh off wh
chalty - fm Ft
barren foss
in pt

-- "

Black Sh inc
3000' sample

3000'

lms off wh - tw
fm barren

-- "

Black Sh inc

3050'

lms wh tw chalty
Ft barren

RECORDED 2000 1100

2100 sample

3100'

Varied Sh

TORONTO 3112-1170

has cream colored
Ft barren Fm

KC 3128-1195

has wh. offsh Foss
Ft Fm barren

3150'

has offsh to + N Fx
VM- m FO + st
Fm inter + Foss
Por

3200'

has cherty offsh
Ft VM FO + st
Fm inter + Por Fm?

has offsh Ft m-
Adeg FO st + Lt
odor inter Foss +
Por
has wh chalty
barren

3250'

Black Sh
Green shale, 100
70

has wh Ft yr
FO + st
inter + Por

3300'

has offsh Foss Ft
m- Adeg FO st +
odor inter Foss
+ X Por

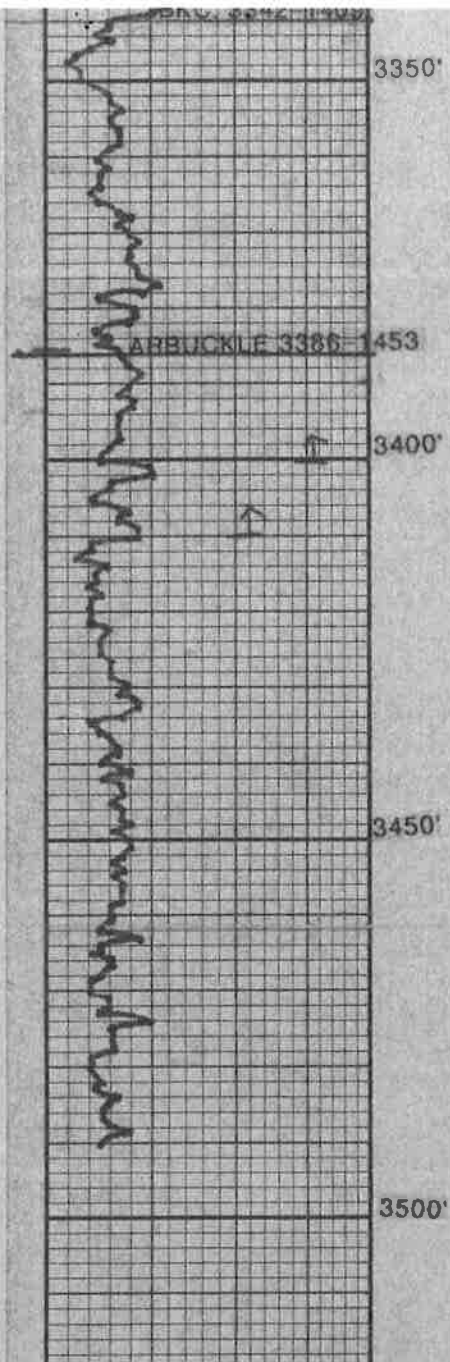
has calc d
Foss Por m- Adeg
FO st + odor

has Fm cherty VM
FO + st
has offsh Fm Ft
barren

DST #1 "EF"
3194-3210
No blow.
30-30-1
Rec 10' mu
FP 37-40
SIP: 585

DST #2
3244-3310
72' "HI"
Blow Dried
30-30-1
FP: 60-62
SIP 341#
Rec: 10' m

DST #3
3328-3400
Blow: weak
30-30-1



3350'	Varied sh
	2 in. cherty fl + w Dolomite - weathered
3453	Dol off wh. to gray tr Fo + St weathered
3400'	Dol m - Fx m - Adeq. Fo st + odor
	inter t for Dol F - mx cherty, with sand inclusions and glauc. inclusions Adeq. Fo st + odor
	Dol Fx - mx deal st inter t for Dol off wh to Lt orange F - mx cherty barren
3450'	
	Dol off wh, orange and greenish F. cl with sand and glauc inclusions barren
3500'	

Rec. 10' 0
 SIP: 130
 FP: 61-64

DST #4
 3386 - 3
 8
 Ar

Blow' Wee
 45-45-45
 Rec 90'

ISIP: 791
 FSIP: 713
 FP: 69-90