



# Eagle Testers L.L.C.

1309 Patton  
Great Bend, Kansas 67530  
(620)791-7394

Company Yellow Dog Energy LLC  
 Address 212 North East Concord Street Minneapolis Kansas 67467  
 Lease & # BAUGHMAN #28-1 Sec. 28 Twp 7S Rng 19W  
 Date 5-17-2018 County ROOKS Elevation 1931 G.L. 1936 K.B.  
 Drilling Contractor Royal Drilling Rig #1  
 Drill Pipe Length \_\_\_\_\_ I.D. of Drill Pipe 3.80 Tool Joint Size 4 1/2" X.H.  
 Drill Collar Length NONE I.D. of Drill Collars NONE Tool Joint Size NONE  
 Mud Weight 8.9 Viscosity 45 Filtrate 7.4 Chlorides-Pits 2500 DST \_\_\_\_\_  
 Top Packer Depth 3321 Bottom Packer Depth 3326 Number of Packers 2  
 Tested From 3326 to 3410 Total Depth 3410 Anchor Length 84  
 Test # 4 Formation Tested Arbuckle Hole Size 7 7/8  
 Initial Blow WEAK building Blow built to 7 inches into the water

Blow back on the 1st Shut-in \_\_\_\_\_  
 Final Blow WEAK building blow built to 3 inches into the water  
 Blow back on the 2nd Shut-in \_\_\_\_\_

Initial Hydrostatic 1715 P.S.I. Final Hydrostatic 1629 P.S.I. Maximum Temp. 109 F

Initial Opening	<u>69</u> P.S.I. to <u>90</u> P.S.I.	from	<u>3:53</u> A m to <u>4:38</u> A m	<u>45</u> minutes
Initial Shut-in	<u>790</u> P.S.I.	from	<u>4:38</u> A m to <u>5:23</u> A m	<u>45</u> minutes
Final Opening	<u>96</u> P.S.I. to <u>106</u> P.S.I.	from	<u>5:23</u> A m to <u>6:08</u> A m	<u>45</u> minutes
Final Shut-in	<u>713</u> P.S.I.	from	<u>6:08</u> A m to <u>6:53</u> A m	<u>45</u> minutes

Feet	Recovery Description	% Gas	% Oil	% Mud	% Water
<u>10</u>	<u>CLEAN OIL</u>				
<u>20</u>	<u>Heavy oil cut mud very thick Heavy mud</u>		<u>50</u>	<u>50</u>	
<u>60</u>	<u>Oil cut very Heavy thick mud</u>		<u>30</u>	<u>70</u>	

Total Feet Recovered \_\_\_\_\_  
 Gravity of oil \_\_\_\_\_ Corrected Recovery Chlorides \_\_\_\_\_ Rw. \_\_\_\_\_ ohms @ \_\_\_\_\_ Degrees  
 Gas to Surface in \_\_\_\_\_ minutes Max. Gas Gauged \_\_\_\_\_ MCF/day Was a gas sample taken \_\_\_\_\_  
 Comments \_\_\_\_\_

Time on Location \_\_\_\_\_ Tool Opened \_\_\_\_\_ Tool Pulled \_\_\_\_\_ Time Out \_\_\_\_\_  
 Extra Equipment-Jars \_\_\_\_\_ Safety Joint \_\_\_\_\_ Circulating Sub \_\_\_\_\_ Straddle \_\_\_\_\_  
 Inside Recorder No. 9119 Depth 3406 Extra Packer (3rd) \_\_\_\_\_ Hook Wall \_\_\_\_\_  
 Outside Recorder No. 9139 Depth 3407 Extra Packer (4th) \_\_\_\_\_ Sampler \_\_\_\_\_  
 Tool Operator Gene Budig Approved By \_\_\_\_\_

Ticket No 01122

829



## DRILL STEM TEST REPORT

Prepared For: **Yellow Dog LLC**

212 North Concord Street  
Minneapolis, Kansas 67427

ATTN: Jerry Green

**Baughman #28-1**

**28-7-s-019w Rooks**

Start Date: 2018.05.17 @ 02:45:00

End Date: 2018.05.17 @ 08:29:00

Job Ticket #: 01122                      DST #: 4

Eagle Testers  
1309 Patton Road    Great Bend, Kansas 67530  
620-791-7394

Printed: 2018.05.17 @ 08:56:18

Yellow Dog LLC    28-7-s-019w Rooks    Baughman #28-1    DST # 4    Arbuckle    2018.05.17



# DRILL STEM TEST REPORT

Yellow Dog LLC  
 212 North Concord Street  
 Minneapolis, Kansas 67427  
 ATTN: Jerry Green

28-7-a-019w Rooks  
 Baughman #28-1  
 Job Ticket: 01122 DST#: 4  
 Test Start: 2018.05.17 @ 02:45:00

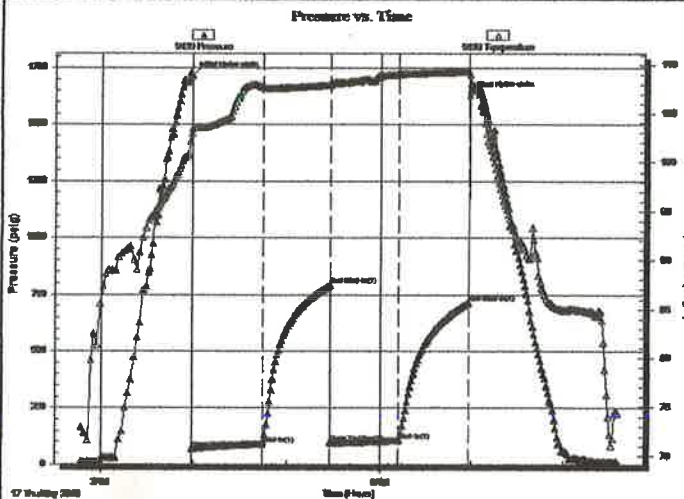
## GENERAL INFORMATION:

Formation: **Arbuckle**  
 Deviated: **No** Whipstock: **ft (KB)**  
 Time Tool Opened: **03:53:00**  
 Time Test Ended: **08:29:00**  
 Interval: **3326.00 ft (KB) To 3410.00 ft (KB) (TVD)**  
 Total Depth: **3410.00 ft (KB) (TVD)**  
 Hole Diameter: **7.88 inches** Hole Condition: **Fair**  
 Test Type: **Conventional Bottom Hole (Initial)**  
 Tester: **Gene Budig**  
 Unit No: **1**  
 Reference Elevations: **1836.00 ft (KB)**  
**1831.00 ft (CF)**  
 KB to GR/CF: **5.00 ft**

## Serial #: 9139

Press@RunDepth: **713.76 psig @ ft (KB)** Capacity: **psig**  
 Start Date: **2018.05.17** End Date: **2018.05.17** Last Calib.: **1899.12.30**  
 Start Time: **02:45:00** End Time: **08:34:30** Time On Btm: **2018.05.17 @ 03:58:30**  
 Time Off Btm: **2018.05.17 @ 06:58:30**

TEST COMMENT: 1st Opening 45 Minutes weak building blow built to 7 inches into the water  
 1st Shuyt-In 45 Minutes no blow back  
 2nd Opening 45 Minutes weak building blow built to 3 inches into the water  
 2nd Shut-In 45 Minutes no blow back



## PRESSURE SUMMARY

Time (Min.)	Pressure (psig)	Temp (deg F)	Annotation
0	1715.84	102.89	Initial Hydro-static
1	69.02	103.41	Open To Flow (1)
46	90.64	107.69	Shut-In(1)
89	790.46	107.92	End Shut-In(1)
90	96.34	108.16	Open To Flow (2)
134	106.99	109.02	Shut-In(2)
180	713.76	109.29	End Shut-In(2)
180	1629.95	109.01	Final Hydro-static

## Recovery

Length (ft)	Description	Volume (bbl)
20.00	heavy oil cut very thick heavy mud	0.28
0.00	50% Mud 50% Oil	0.00
60.00	Oil cut very thick heavy mud	0.84
0.00	30% Oil 70% Mud	0.00

## Gas Rates

	Choke (Inches)	Pressure (psig)	Gas Rate (Mcf/d)



# DRILL STEM TEST REPORT

Yellow Dog LLC  
 212 North Concord Street  
 Minneapolis, Kansas 67427  
 ATTN: Jerry Green

28-7-s-019w Rooks  
 Baughman #28-1  
 Job Ticket: 01122 DST#: 4  
 Test Start: 2018.05.17 @ 02:45:00

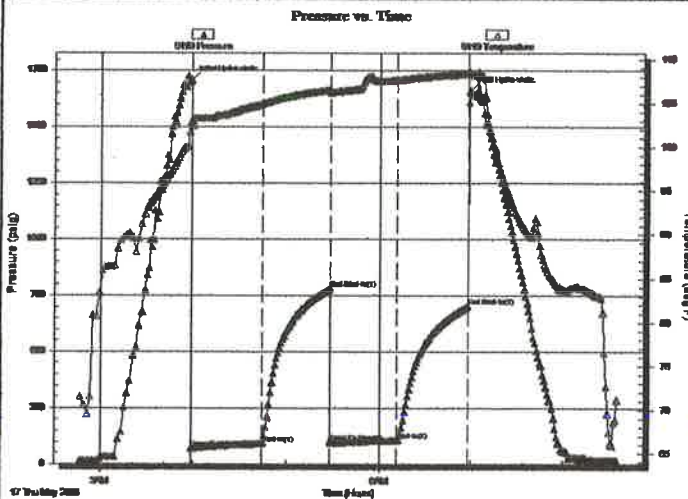
## GENERAL INFORMATION:

Formation: **Arbuckle**  
 Deviated: **No Whipstock:** ft (KB)  
 Time Tool Opened: 03:53:00  
 Time Test Ended: 08:29:00  
 Interval: **3326.00 ft (KB) To 3410.00 ft (KB) (TVD)**  
 Total Depth: **3410.00 ft (KB) (TVD)**  
 Hole Diameter: **7.88 inches** Hole Condition: **Fair**  
 Test Type: **Conventional Bottom Hole (Initial)**  
 Tester: **Gene Budig**  
 Unit No: **1**  
 Reference Elevations: **1836.00 ft (KB)**  
**1831.00 ft (CF)**  
 KB to GR/CF: **5.00 ft**

## Serial #: 9119

Press@RunDepth: **702.95 psig @** ft (KB) Capacity: psig  
 Start Date: **2018.05.17** End Date: **2018.05.17** Last Calib.: **1899.12.30**  
 Start Time: **02:45:00** End Time: **08:34:30** Time On Btm: **2018.05.17 @ 03:58:30**  
 Time Off Btm: **2018.05.17 @ 06:59:00**

TEST COMMENT: 1st Opening 45 Minutes weak building blow built to 7 inches into the water  
 1st Shuyt-In 45 Minutes no blow back  
 2nd Opening 45 Minutes weak building blow built to 3 inches into the water  
 2nd Shut-In 45 Minutes no blow back



## PRESSURE SUMMARY

Time (Min.)	Pressure (psig)	Temp (deg F)	Annotation
0	1707.74	102.94	Initial Hydro-static
1	70.03	102.46	Open To Flow (1)
46	90.30	104.92	Shut-In(1)
89	779.35	106.53	End Shut-In(1)
90	97.67	106.22	Open To Flow (2)
133	106.04	107.63	Shut-In(2)
180	702.95	108.34	End Shut-In(2)
181	1661.92	108.53	Final Hydro-static

## Recovery

Length (ft)	Description	Volume (bbl)
20.00	heavy oil cut very thick heavy mud	0.28
0.00	50% Mud 50% Oil	0.00
60.00	Oil cut very thick heavy mud	0.84
0.00	30% Oil 70% Mud	0.00

## Gas Rates

	Choke (inches)	Pressure (psig)	Gas Rate (Mcf/d)



# DRILL STEM TEST REPORT

TOOL DIAGRAM

Yellow Dog LLC  
 212 North Concord Street  
 Minneapolis, Kansas 67427  
 ATTN: Jerry Green

28-7-a-019w Rooks  
 Baughman #28-1  
 Job Ticket: 01122      DST#: 4  
 Test Start: 2018.05.17 @ 02:45:00

## Tool Information

Drill Pipe:	Length: 3320.00 ft	Diameter: 3.80 inches	Volume: 46.57 bbl	Tool Weight: 2000.00 lb
Heavy Wt. Pipe:	Length: 0.00 ft	Diameter: 0.00 inches	Volume: 0.00 bbl	Weight set on Packer: 200009.0 lb
Drill Collar:	Length: 0.00 ft	Diameter: 0.00 inches	Volume: 0.00 bbl	Weight to Pull Loose: 63000.00 lb
			<u>Total Volume: 46.57 bbl</u>	Tool Chased 0.00 ft
Drill Pipe Above KB:	14.00 ft			String Weight: Initial 52000.00 lb
Depth to Top Packer:	3326.00 ft			Final 52000.00 lb
Depth to Bottom Packer:	ft			
Interval between Packers:	83.90 ft			
Tool Length:	103.90 ft			
Number of Packers:	2	Diameter: 6.75 inches		

Tool Comments:

Tool Description	Length (ft)	Serial No.	Position	Depth (ft)	Accum. Lengths
Shut In Tool	5.00			3311.00	
Hydraulic tool	5.00			3316.00	
Packer	5.00			3321.00	20.00      Bottom Of Top Packer
Packer	5.00		Fluid	3326.00	
Anchor	0.00			3326.00	
Change Over Sub	0.75			3326.75	
Drill Pipe	63.40			3390.15	
Change Over Sub	0.75		Inside	3390.90	
Anchor	14.00			3404.90	
Recorder	0.00	9119	Inside	3404.90	
Recorder	0.00	9139	Outside	3404.90	
Bullnose	5.00			3409.90	83.90      Bottom Packers & Anchor

**Total Tool Length: 103.90**



# DRILL STEM TEST REPORT

## FLUID SUMMARY

Yellow Dog LLC  
 212 North Concord Street  
 Minneapolis, Kansas 67427  
 ATTN: Jerry Green

28-7-s-019w Rooks  
 Baughman #28-1  
 Job Ticket: 01122      DST#: 4  
 Test Start: 2018.05.17 @ 02:45:00

### Mud and Cushion Information

Mud Type: Gel Chem	Cushion Type:	Oil API:	deg API
Mud Weight: 9.00 lb/gal	Cushion Length: ft	Water Salinity:	ppm
Viscosity: 45.00 sec/qt	Cushion Volume: bbl		
Water Loss: 7.40 in <sup>3</sup>	Gas Cushion Type:		
Resistivity: ohm.m	Gas Cushion Pressure: psig		
Salinity: 2500.00 ppm			
Filter Cake: 1.00 inches			

### Recovery Information

Recovery Table

Length ft	Description	Volume bbl
20.00	heavy oil cut very thick heavy mud	0.281
0.00	50% Mud 50% Oil	0.000
60.00	Oil cut very thick heavy mud	0.842
0.00	30% Oil 70% Mud	0.000

Total Length: 80.00 ft      Total Volume: 1.263 bbl

Num Fluid Samples: 0      Num Gas Bombs: 0      Serial #:

Laboratory Name:      Laboratory Location:

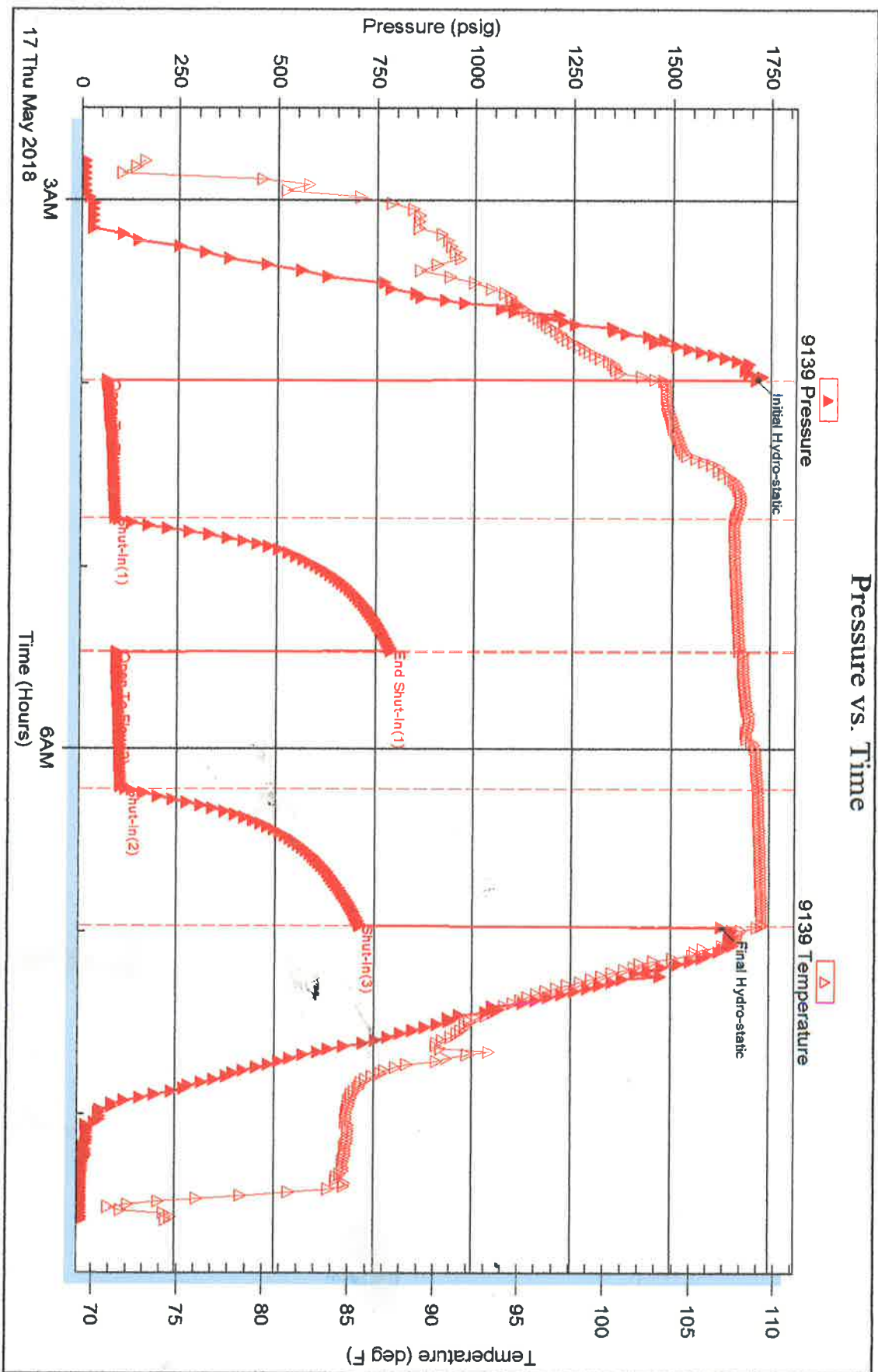
Recovery Comments:

Serial #: 9139

Outside Yellow Dog LLC

Baughman #28-1

DST Test Number: 4



Eagle Testers

Ref. No: 01122

Printed: 2018.05.17 @ 08:58:59

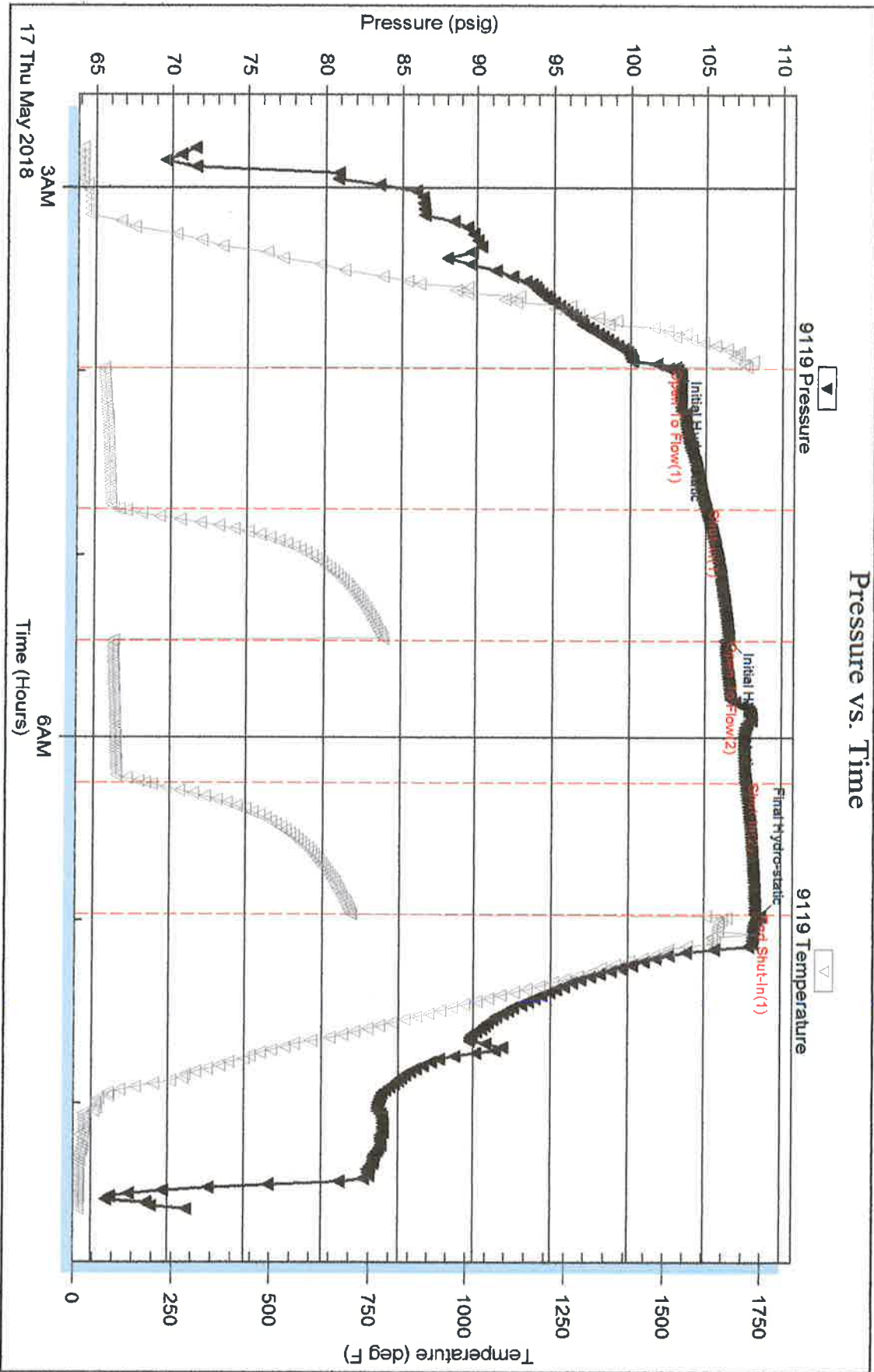
Serial #: 9119

Inside

Yellow Dog LLC

Baughman #28-1

DST Test Number: 4



Eagle Testers

Ref. No: 01122

Printed: 2018.05.17 @ 08:58:59