

KANSAS CORPORATION COMMISSION
OIL & GAS CONSERVATION DIVISION

Form must be Typed
Form must be signed

TEMPORARY ABANDONMENT WELL APPLICATION

All blanks must be complete

OPERATOR: License#
Name:
Address 1:
Address 2:
City: State: Zip:
Contact Person:
Phone:
Contact Person Email:
Field Contact Person:
Field Contact Person Phone:

API No. 15-
Spot Description:
Sec. Twp. S. R.
GPS Location: Lat, Long
Datum: NAD27, NAD83, WGS84
County: Elevation:
Lease Name: Well #:
Well Type: Oil, Gas, OG, WSW, Other
SWD Permit #: ENHR Permit #:
Gas Storage Permit #:
Spud Date: Date Shut-In:

Table with 7 columns: Conductor, Surface, Production, Intermediate, Liner, Tubing. Rows include Size, Setting Depth, Amount of Cement, Top of Cement, Bottom of Cement.

Casing Fluid Level from Surface: How Determined? Date:
Casing Squeeze(s): to w / sacks of cement, to w / sacks of cement. Date:
Do you have a valid Oil & Gas Lease? Yes No
Depth and Type: Junk in Hole at Tools in Hole at Casing Leaks: Yes No Depth of casing leak(s):
Type Completion: ALT. I ALT. II Depth of: DV Tool: w / sacks of cement Port Collar: w / sack of cement
Packer Type: Size: Inch Set at: Feet
Total Depth: Plug Back Depth: Plug Back Method:

Geological Data:

Table with 4 columns: Formation Name, Formation Top, Formation Base, Completion Information. Rows 1 and 2.

UNDER PENALTY OF PERJURY I HEREBY ATTEST THAT THE INFORMATION CONTAINED HEREIN IS TRUE AND CORRECT TO THE BEST OF MY KNOWLEDGE

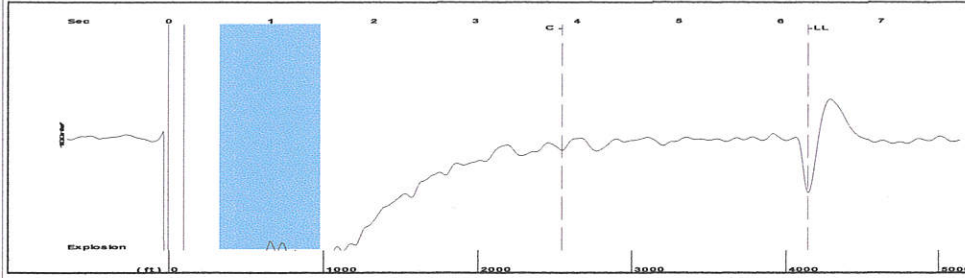
Submitted Electronically

Do NOT Write in This Space - KCC USE ONLY
Date Tested: Results: Date Plugged: Date Repaired: Date Put Back in Service:
Review Completed by: Comments:
TA Approved: Yes Denied Date:

Mail to the Appropriate KCC Conservation Office:

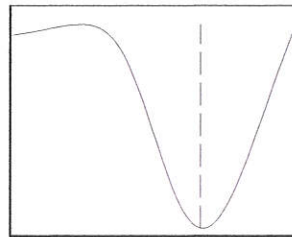
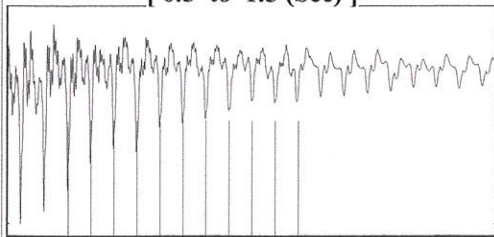
Table with 3 columns: District Office #, Address, Phone. Rows 1-4.

Group: TA'D WELLS Well: PERRY A-2 (acquired on: 05/29/18 14:12:25)



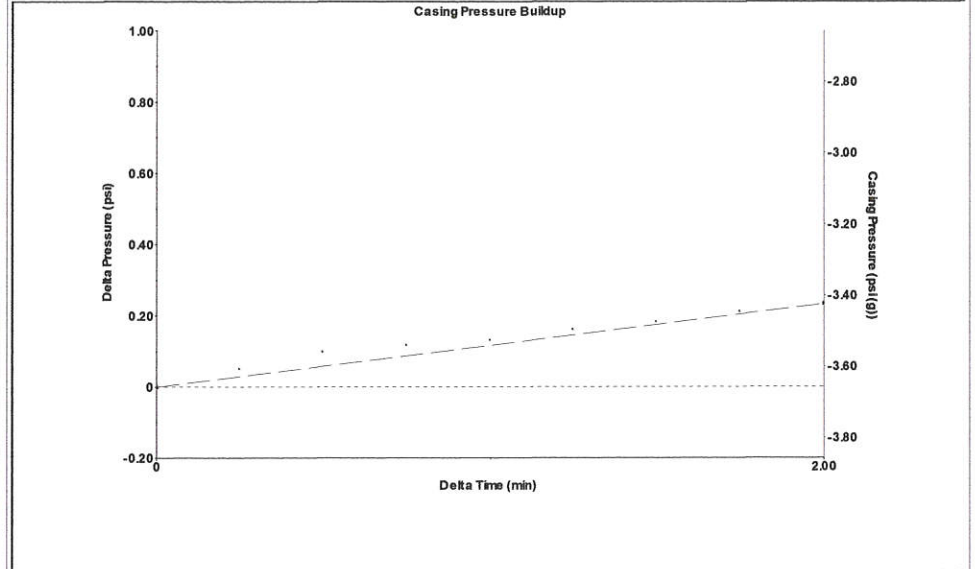
Filter Type High Pass Automatic Collar Count Yes Time 6.277 sec
 Manual Acoustic Vel 1317.12 ft/s Manual JTS/sec 21.1416 Joints 133.106 Jts
 Depth 4146.25 ft

[0.5 to 1.5 (Sec)]



Analysis Method: Automatic

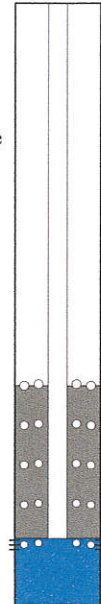
Group: TA'D WELLS Well: PERRY A-2 (acquired on: 05/29/18 14:12:25)



Change in Pressure 0.23 psi PT11249
 Change in Time 2.00 min Range 0 - ? psi

Group: TA'D WELLS Well: PERRY A-2 (acquired on: 05/29/18 14:12:25)

Production		Casing Pressure
Current	Potential	-3.7 psi (g)
Oil - * -	- * - BBL/D	Casing Pressure Buildup
Water - * -	- * - BBL/D	0.2 psi
Gas - * -	- * - Mscf/D	2.00 min
		Gas/Liquid Interface Pressure
IPR Method	Vogel	-2.6 psi (g)
PBHP/SBHP	- * -	
Production Efficiency	0.0	
		Liquid Level Depth
Oil 40 deg.API		4146.25 ft
Water 1.05 Sp.Gr.H2O		Pump Intake Depth
Gas 0.68 Sp.Gr.AIR		6107.00 ft
		Formation Depth
Acoustic Velocity	1321.09 ft/s	6186.00 ft



Producing

Annular Gas Flow 5 Mscf/D

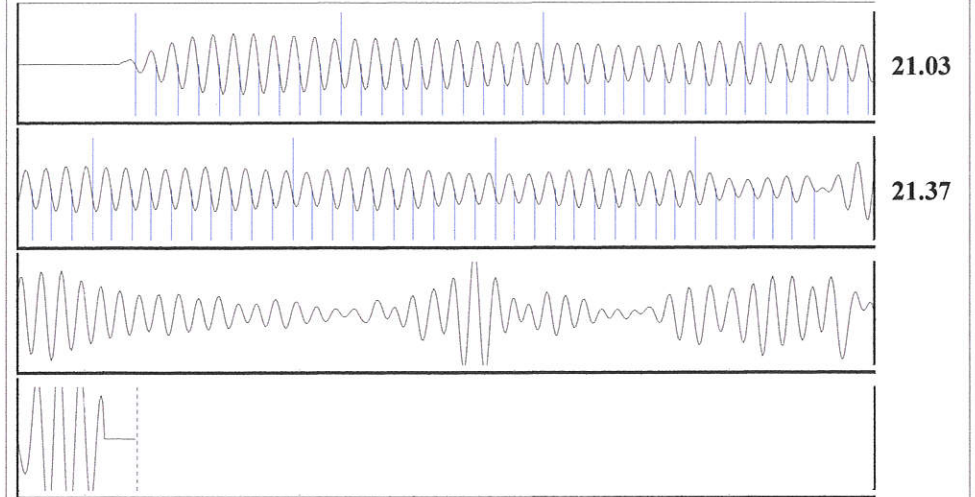
% Liquid 82 %

Pump Intake 532.2 psi (g)

Producing BHP 563.0 psi (g)

Static BHP - * - psi (g)

Group: TA'D WELLS Well: PERRY A-2 (acquired on: 05/29/18 14:12:25)



Acoustic Velocity	1321.09 ft/s	Joints counted	76
Joints Per Second	21.2054 jts/sec	Joints to liquid level	133.106
Depth to liquid level	4146.25 ft	Filter Width	19.1416 23.1416
Automatic Collar Count	Yes	Time to 1st Collar	0.272 3.856

STATE OF KANSAS

CORPORATION COMMISSION
CONSERVATION DIVISION
DISTRICT No. 1
210 E. FRONTVIEW, SUITE A
DODGE CITY, KS 67801



PHONE: 620-682-7933
<http://kcc.ks.gov/>

GOVERNOR JEFF COLYER, M.D.

SHARI FEIST ALBRECHT, CHAIR | JAY SCOTT EMLER, COMMISSIONER | DWIGHT D. KEEN, COMMISSIONER

June 05, 2018

Katherine McClurkan
Merit Energy Company, LLC
13727 NOEL ROAD, SUITE 1200
DALLAS, TX 75240

Re: Temporary Abandonment
API 15-189-21612-00-00
Perry A 2
NE/4 Sec.04-33S-38W
Stevens County, Kansas

Dear Katherine McClurkan:

"Your temporary abandonment (TA) application for the well listed above has been approved. In accordance with K.A.R. 82-3-111 the TA status of this well will expire 06/05/2019.

- * If you return this well to service or plug it, please notify the District Office.
- * If you sell this well you are required to file a Transfer of Operator form, T-1.
- * If the well will remain temporarily abandoned, you must submit a new TA application, CP-111, before 06/05/2019.

You may contact me at the number above if you have questions.

Very truly yours,

Michael Maier"