

KANSAS CORPORATION COMMISSION
OIL & GAS CONSERVATION DIVISION

TEMPORARY ABANDONMENT WELL APPLICATION

OPERATOR: License#
Name:
Address 1:
Address 2:
City: State: Zip:
Contact Person:
Phone:
Contact Person Email:
Field Contact Person:
Field Contact Person Phone:

API No. 15-
Spot Description:
Sec. Twp. S. R.
GPS Location: Lat, Long
Datum: NAD27, NAD83, WGS84
County: Elevation:
Lease Name: Well #:
Well Type: Oil, Gas, OG, WSW, Other
SWD Permit #: ENHR Permit #:
Gas Storage Permit #:
Spud Date: Date Shut-In:

Table with 7 columns: Conductor, Surface, Production, Intermediate, Liner, Tubing. Rows include Size, Setting Depth, Amount of Cement, Top of Cement, Bottom of Cement.

Casing Fluid Level from Surface: How Determined? Date:
Casing Squeeze(s): to w / sacks of cement, to w / sacks of cement. Date:
Do you have a valid Oil & Gas Lease? Yes No
Depth and Type: Junk in Hole at Tools in Hole at Casing Leaks: Yes No Depth of casing leak(s):
Type Completion: ALT. I ALT. II Depth of: DV Tool: w / sacks of cement Port Collar: w / sack of cement
Packer Type: Size: Inch Set at: Feet
Total Depth: Plug Back Depth: Plug Back Method:

Geological Data:

Table with 4 columns: Formation Name, Formation Top, Formation Base, Completion Information. Rows 1 and 2.

UNDER PENALTY OF PERJURY I HEREBY ATTEST THAT THE INFORMATION CONTAINED HEREIN IS TRUE AND CORRECT TO THE BEST OF MY KNOWLEDGE

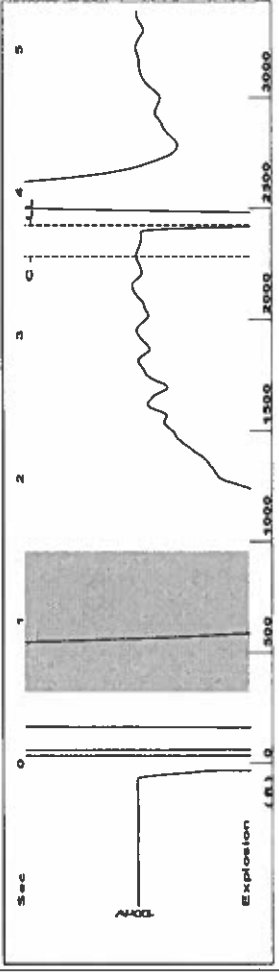
Submitted Electronically

Do NOT Write in This Space - KCC USE ONLY
Date Tested: Results: Date Plugged: Date Repaired: Date Put Back in Service:
Review Completed by: Comments:
TA Approved: Yes Denied Date:

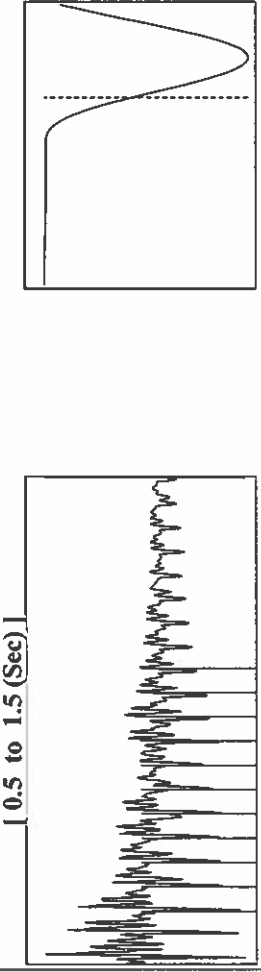
Mail to the Appropriate KCC Conservation Office:

Table with 3 columns: District Office, Address, Phone. Rows for District Office #1, #2, #3, #4.

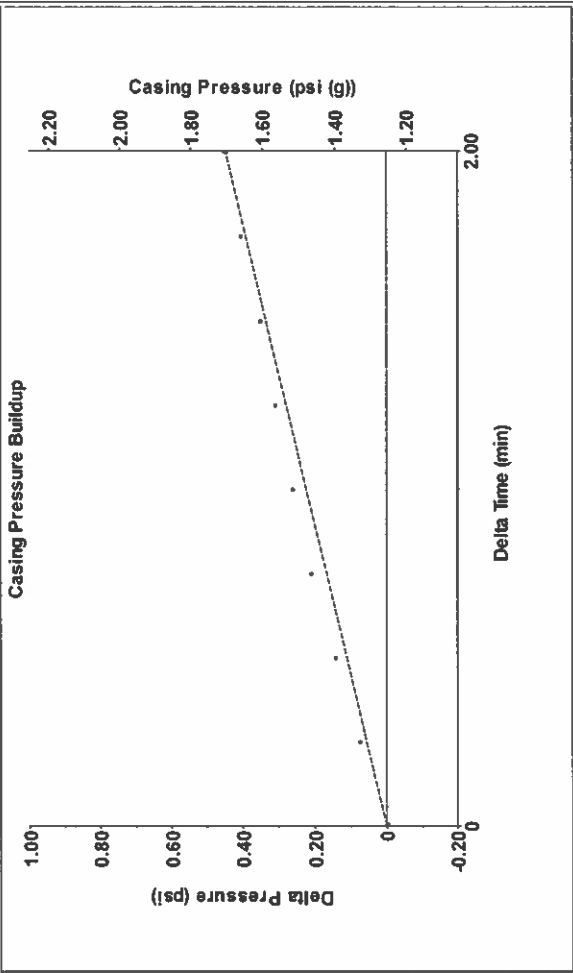
Group: TA'D Well: baker 2 (acquired on: 05/21/18 09:32:32 )



Filter Type High Pass Automatic Collar Count Yes  
 Manual Acoustic Velocity 1268 ft/s Manual JTS/sec 20



Group: TA'D Well: baker 2 (acquired on: 05/21/18 09:32:32 )



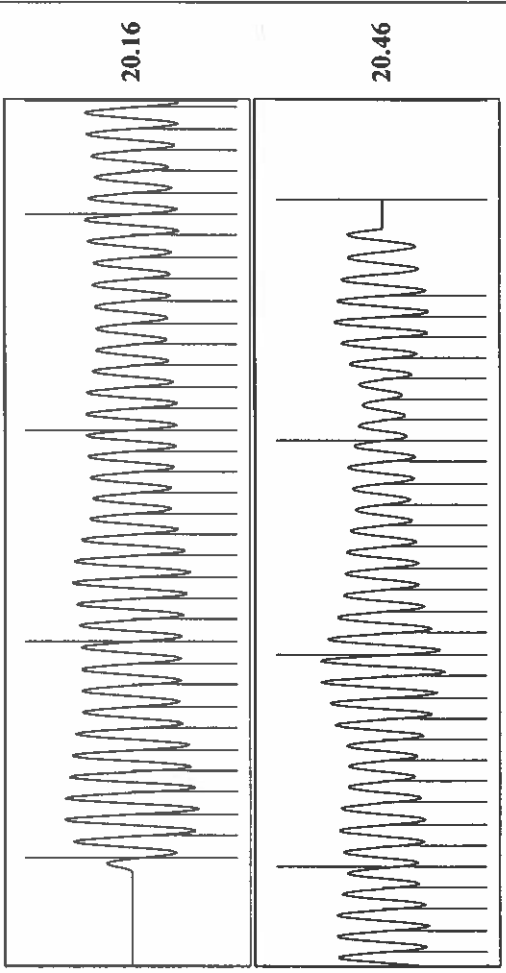
Change in Pressure 0.45 psi PTI3865 Range  
 Change in Time 2.00 min

**Analysis Method: Automatic**

Group: TA'D Well: baker 2 (acquired on: 05/21/18 09:32:32 )

Production	Potential	Casing Pressure	Producing
Oil - * -	1.3 psi (g)	Annular	Pump Intake - * - psi (g)
Water - * -	Casing Pressure Buildup	Gas Flow 6 Mscf/D	Producing BHP 9.6 psi (g)
Gas - * -	2.00 min	% Liquid 81 %	Static BHP - * - psi (g)
IPR Method Vogel	Gas/Liquid Interface Pressure		
PBHP/SBHP - * -	2.2 psi (g)		
Production Efficiency 0.0	Liquid Level Depth		
Oil 40 deg.API	2425.11 ft		
Water 1.05 Sp.Gr.H2O	Pump Intake Depth		
Gas 0.72 Sp.Gr.AIR	- * - ft		
Acoustic Velocity 1287.21 ft/s	Formation Depth		
	2445.00 ft		
Formation Submergence			
Total Gaseous Liquid Column HT (TVD)	20 ft		
Equivalent Gas Free Liquid HT (TVD)	16 ft		
Acoustic Test			

Group: TA'D Well: baker 2 (acquired on: 05/21/18 09:32:32 )



Acoustic Velocity 1287.21 ft/s Joints counted 67  
 Joints Per Second 20.303 Joints to liquid level 76.5018  
 Depth to liquid level 2425.11 ft Filter Width 18  
 Automatic Collar Count Yes Time to 1st Collar 0.248 3.548

# STATE OF KANSAS

CORPORATION COMMISSION  
CONSERVATION DIVISION  
DISTRICT No. 1  
210 E. FRONTVIEW, SUITE A  
DODGE CITY, KS 67801



PHONE: 620-682-7933  
<http://kcc.ks.gov/>

GOVERNOR JEFF COLYER, M.D.

SHARI FEIST ALBRECHT, CHAIR | JAY SCOTT EMLER, COMMISSIONER | DWIGHT D. KEEN, COMMISSIONER

June 05, 2018

Katherine McClurkan  
Merit Energy Company, LLC  
13727 Noel Road, Suite 1200  
Dallas, TX 75240

Re: Temporary Abandonment  
API 15-055-20383-00-01  
Baker 2  
SW/4 Sec.15-23S-34W  
Finney County, Kansas

Dear Katherine McClurkan:

"Your temporary abandonment (TA) application for the well listed above has been approved. In accordance with K.A.R. 82-3-111 the TA status of this well will expire 06/05/2019.

- \* If you return this well to service or plug it, please notify the District Office.
- \* If you sell this well you are required to file a Transfer of Operator form, T-1.
- \* If the well will remain temporarily abandoned, you must submit a new TA application, CP-111, before 06/05/2019.

You may contact me at the number above if you have questions.

Very truly yours,

Michael Maier"