

KANSAS CORPORATION COMMISSION
OIL & GAS CONSERVATION DIVISION

Form must be Typed
Form must be signed

TEMPORARY ABANDONMENT WELL APPLICATION

All blanks must be complete

OPERATOR: License#
Name:
Address 1:
Address 2:
City: State: Zip:
Contact Person:
Phone:
Contact Person Email:
Field Contact Person:
Field Contact Person Phone:

API No. 15-
Spot Description:
Sec. Twp. S. R.
feet from N / S Line of Section
feet from E / W Line of Section
GPS Location: Lat: , Long:
Datum: NAD27 NAD83 WGS84
County: Elevation: GL KB
Lease Name: Well #:
Well Type: Oil Gas OG WSW Other:
SWD Permit #: ENHR Permit #:
Gas Storage Permit #:
Spud Date: Date Shut-In:

Table with 7 columns: Conductor, Surface, Production, Intermediate, Liner, Tubing. Rows include Size, Setting Depth, Amount of Cement, Top of Cement, Bottom of Cement.

Casing Fluid Level from Surface: How Determined? Date:
Casing Squeeze(s): to w / sacks of cement, to w / sacks of cement. Date:
Do you have a valid Oil & Gas Lease? Yes No
Depth and Type: Junk in Hole at Tools in Hole at Casing Leaks: Yes No Depth of casing leak(s):
Type Completion: ALT. I ALT. II Depth of: DV Tool: w / sacks of cement Port Collar: w / sack of cement
Packer Type: Size: Inch Set at: Feet
Total Depth: Plug Back Depth: Plug Back Method:

Geological Data:

Table with 4 columns: Formation Name, Formation Top, Formation Base, Completion Information. Rows 1 and 2.

UNDER PENALTY OF PERJURY I HEREBY ATTEST THAT THE INFORMATION CONTAINED HEREIN IS TRUE AND CORRECT TO THE BEST OF MY KNOWLEDGE

Submitted Electronically

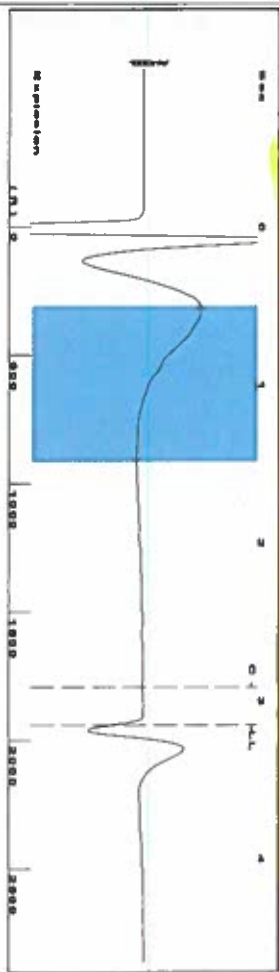
Do NOT Write in This Space - KCC USE ONLY
Date Tested: Results: Date Plugged: Date Repaired: Date Put Back in Service:
Review Completed by: Comments:
TA Approved: Yes Denied Date:

Mail to the Appropriate KCC Conservation Office:

Table with 3 columns: District Office #, Address, Phone. Rows 1-4.

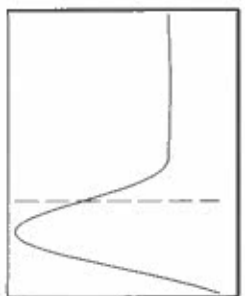
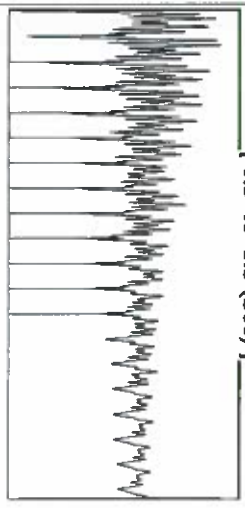
Shot @ 300 # 04

Group: HITCH ROUTE Well: Santa Fe E4 (acquired on: 01/22/18 12:24:10)



Filter Type High Pass Automatic Collar Count Yes Time 3.153 sec
 Manual Acoustic Velo: 1221.58 Manual JTS/sec 19.2678 Joints 61.1884 J/s
 Depth 1939.67 ft

[0.5 to 1.5 (Sec)]



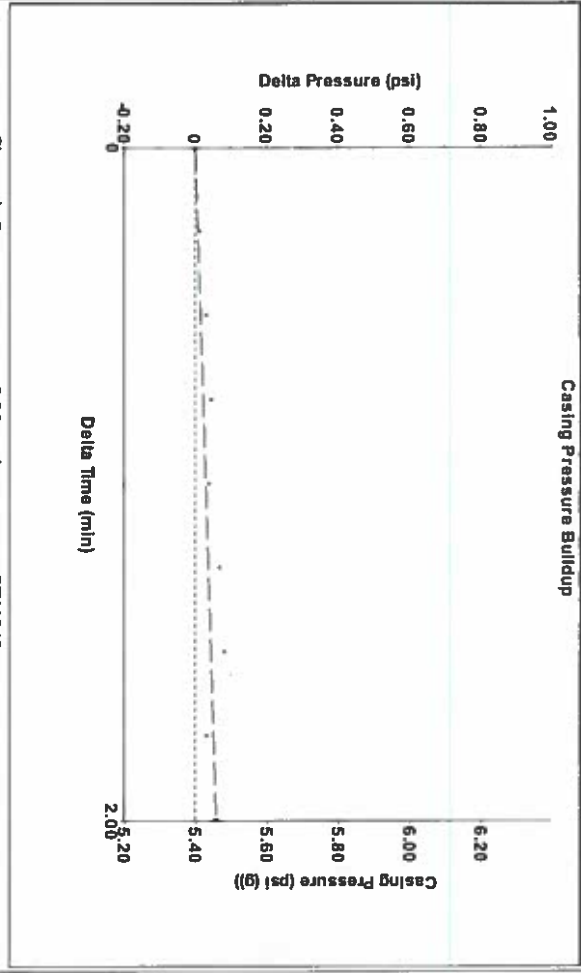
Analysis Method: Automatic

Group: HITCH ROUTE Well: Santa Fe E4 (acquired on: 01/22/18 12:24:10)

Production Current	Potential	Casing Pressure	Static
Oil -*- BBL/D	-*- BBL/D	5.4 psi (g)	Oil Column Height
Water -*- BBL/D	-*- BBL/D	0.059 psi	MD 0 ft
Gas -*- Mscf/D	-*- Mscf/D	2.00 min	Water Column Height
IPR Method	Vogel	Gas/Liquid Interface Pressure	MD 3708 ft
PBHP/SBHP	-*-	6.4 psi (g)	Static BHP
Production Efficiency	0.0	Liquid Level Depth	1692.4 psi (g)
Oil 40 deg API		1939.67 ft	
Water 1.05 Sp.Gr: H2O		Pump Intake Depth	
Gas 0.75 Sp.Gr: AIR		6107.00 ft	
		Formation Depth	
Acoustic Velocity	1230.37 ft/s	5659.00 ft	

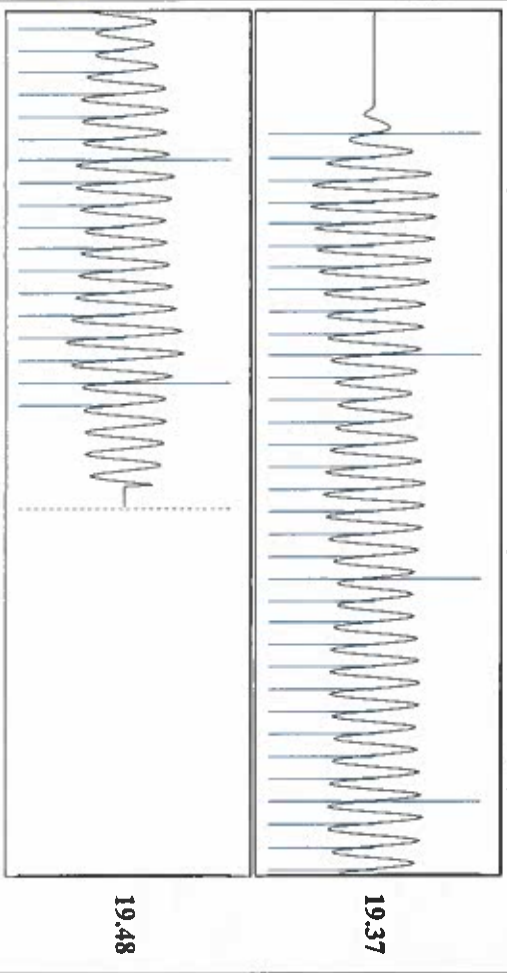


Group: HITCH ROUTE Well: Santa Fe E4 (acquired on: 01/22/18 12:24:10)



Change in Pressure 0.06 psi PT11249
 Change in Time 2.00 min Range 0 - 7 psi

Group: HITCH ROUTE Well: Santa Fe E4 (acquired on: 01/22/18 12:24:10)



Acoustic Velocity	1230.37 ft/s	Joints counted	51
Joints Per Second	19.4064 J/s	Joints to liquid level	61.1884
Depth to liquid level	1939.67 ft	Filter Width	17.2678
Automatic Collar Count	Yes	Time to 1st Collar	0.284
			2.912

STATE OF KANSAS

CORPORATION COMMISSION
CONSERVATION DIVISION
DISTRICT No. 1
210 E. FRONTVIEW, SUITE A
DODGE CITY, KS 67801



PHONE: 620-682-7933
<http://kcc.ks.gov/>

GOVERNOR JEFF COLYER, M.D.

SHARI FEIST ALBRECHT, CHAIR | JAY SCOTT EMLER, COMMISSIONER | DWIGHT D. KEEN, COMMISSIONER

June 05, 2018

Katherine McClurkan
Merit Energy Company, LLC
13727 Noel Road, Suite 1200
Dallas, TX 75240

Re: Temporary Abandonment
API 15-175-21566-00-01
Santa Fe E 4
NW/4 Sec.06-32S-33W
Seward County, Kansas

Dear Katherine McClurkan:

"Your temporary abandonment (TA) application for the well listed above has been approved. In accordance with K.A.R. 82-3-111 the TA status of this well will expire 06/05/2019.

- * If you return this well to service or plug it, please notify the District Office.
- * If you sell this well you are required to file a Transfer of Operator form, T-1.
- * If the well will remain temporarily abandoned, you must submit a new TA application, CP-111, before 06/05/2019.

You may contact me at the number above if you have questions.

Very truly yours,

Michael Maier"