

KANSAS CORPORATION COMMISSION
OIL & GAS CONSERVATION DIVISION

Form must be Typed
Form must be signed

All blanks must be complete

TEMPORARY ABANDONMENT WELL APPLICATION

OPERATOR: License#
Name:
Address 1:
Address 2:
City: State: Zip:
Contact Person:
Phone:
Contact Person Email:
Field Contact Person:
Field Contact Person Phone:

API No. 15-
Spot Description:
Sec. Twp. S. R.
feet from N / S Line of Section
feet from E / W Line of Section
GPS Location: Lat: , Long:
Datum: NAD27 NAD83 WGS84
County: Elevation: GL KB
Lease Name: Well #:
Well Type: Oil Gas OG WSW Other:
SWD Permit #: ENHR Permit #:
Gas Storage Permit #:
Spud Date: Date Shut-In:

Table with 7 columns: Conductor, Surface, Production, Intermediate, Liner, Tubing. Rows include Size, Setting Depth, Amount of Cement, Top of Cement, Bottom of Cement.

Casing Fluid Level from Surface: How Determined? Date:
Casing Squeeze(s): to w / sacks of cement, to w / sacks of cement. Date:
Do you have a valid Oil & Gas Lease? Yes No
Depth and Type: Junk in Hole at Tools in Hole at Casing Leaks: Yes No Depth of casing leak(s):
Type Completion: ALT. I ALT. II Depth of: DV Tool: w / sacks of cement Port Collar: w / sack of cement
Packer Type: Size: Inch Set at: Feet
Total Depth: Plug Back Depth: Plug Back Method:

Geological Data:

Table with 4 columns: Formation Name, Formation Top, Formation Base, Completion Information. Rows 1 and 2.

UNDER PENALTY OF PERJURY I HEREBY ATTEST THAT THE INFORMATION CONTAINED HEREIN IS TRUE AND CORRECT TO THE BEST OF MY KNOWLEDGE

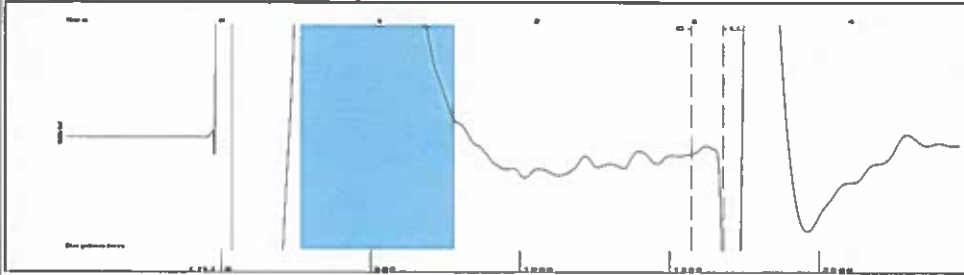
Submitted Electronically

Do NOT Write in This Space - KCC USE ONLY
Date Tested: Results: Date Plugged: Date Repaired: Date Put Back in Service:
Review Completed by: Comments:
TA Approved: Yes Denied Date:

Mail to the Appropriate KCC Conservation Office:

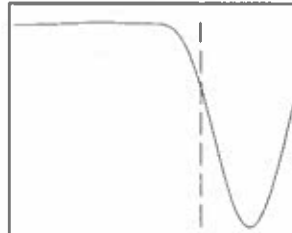
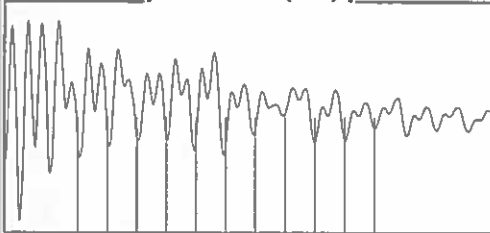
Table with 3 columns: District Office, Address, Phone. Rows for District Office #1, #2, #3, #4.

Group: Ulysses East Well: Fletcher A-3 (acquired on: 07/10/18 14:39:08)



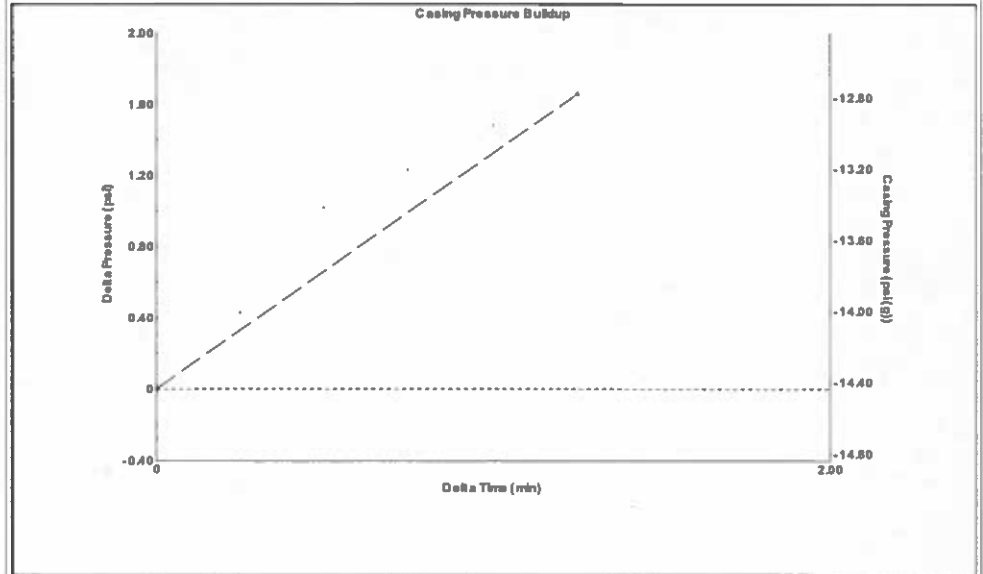
Filter Type High Pass Automatic Collar Count Yes Time 3.192 sec
 Manual Acoustic Velo 1039.34 ft/s Manual JTS/sec 16.3934 Joints 52.9646 Jts
 Depth 1678.98 ft

[0.5 to 1.5 (Sec)]



Analysis Method: Automatic

Group: Ulysses East Well: Fletcher A-3 (acquired on: 07/10/18 14:39:08)



Change in Pressure 1.66 psi PT14679
 Change in Time 1.25 min Range 0 - ? psi

Group: Ulysses East Well: Fletcher A-3 (acquired on: 07/10/18 14:39:08)

Production		Casing Pressure	-14.4 psi (g)
Current	Potential	Casing Pressure Buildup	1.7 psi
Oil -*-	-*- BBL/D		1.25 min
Water -*-	-*- BBL/D	Gas/Liquid Interface Pressure	-14.4 psi (g)
Gas -*-	-*- Mscf/D		
IPR Method	Vogel	Liquid Level Depth	1678.98 ft
PBHP/SBHP	-*-	Pump Intake Depth	4050.00 ft
Production Efficiency	0.0	Formation Depth	4039.00 ft
Oil 40 deg.API			
Water 1.05 Sp.Gr.H2O			
Gas 0.92 Sp.Gr.AIR			
Acoustic Velocity	1051.99 ft/s		



Producing

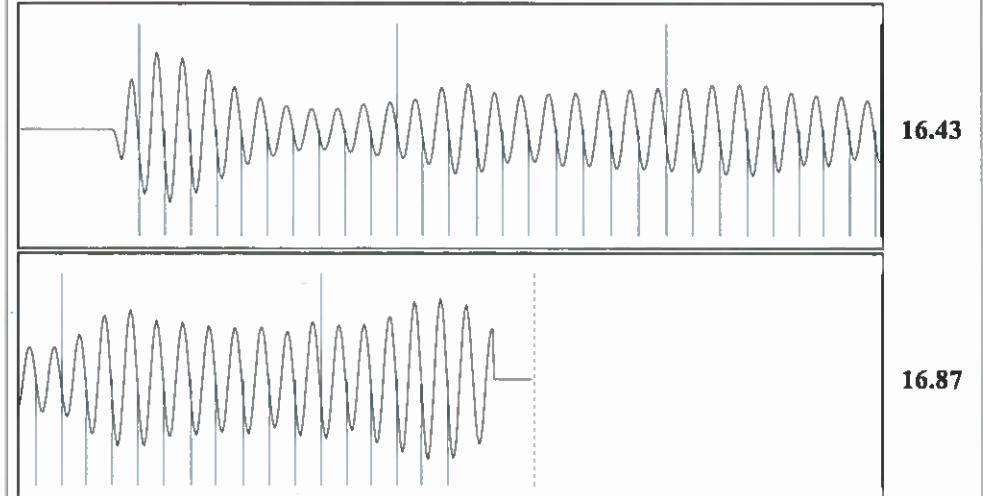
Annular Gas Flow 42 Mscf/D
 % Liquid 30 %

Pump Intake
 235.8 psi (g)
Producing BHP
 232.1 psi (g)
Static BHP
 - *- psi (g)

Formation Submergence
 Total Gaseous Liquid Column HT (TVD) 2371 ft
 Equivalent Gas Free Liquid HT (TVD) 730 ft

Acoustic Test

Group: Ulysses East Well: Fletcher A-3 (acquired on: 07/10/18 14:39:08)



Acoustic Velocity	1051.99 ft/s	Joints counted	45
Joints Per Second	16.5929 jts/sec	Joints to liquid level	52.9646
Depth to liquid level	1678.98 ft	Filter Width	14.3934 18.3934
Automatic Collar Count	Yes	Time to 1st Collar	0.28 2.992

STATE OF KANSAS

CORPORATION COMMISSION
CONSERVATION DIVISION
DISTRICT No. 1
210 E. FRONTVIEW, SUITE A
DODGE CITY, KS 67801



PHONE: 620-682-7933
<http://kcc.ks.gov/>

GOVERNOR JEFF COLYER, M.D.

SHARI FEIST ALBRECHT, CHAIR | JAY SCOTT EMLER, COMMISSIONER | DWIGHT D. KEEN, COMMISSIONER

July 16, 2018

Katheirne McClurkan
Merit Energy Company, LLC
13727 Noel Road, Suite 1200
Dallas, TX 75240

Re: Temporary Abandonment
API 15-081-00014-00-03
Fletcher A 3
NW/4 Sec.04-28S-34W
Haskell County, Kansas

Dear Katheirne McClurkan:

"Your temporary abandonment (TA) application for the well listed above has been approved. In accordance with K.A.R. 82-3-111 the TA status of this well will expire 07/16/2019.

- * If you return this well to service or plug it, please notify the District Office.
- * If you sell this well you are required to file a Transfer of Operator form, T-1.
- * If the well will remain temporarily abandoned, you must submit a new TA application, CP-111, before 07/16/2019.

You may contact me at the number above if you have questions.

Very truly yours,

Michael Maier"