

KANSAS CORPORATION COMMISSION
OIL & GAS CONSERVATION DIVISION

TEMPORARY ABANDONMENT WELL APPLICATION

OPERATOR: License#
Name:
Address 1:
Address 2:
City: State: Zip:
Contact Person:
Phone:
Contact Person Email:
Field Contact Person:
Field Contact Person Phone:

API No. 15-
Spot Description:
Sec. Twp. S. R.
GPS Location: Lat, Long
Datum: NAD27, NAD83, WGS84
County: Elevation:
Lease Name: Well #:
Well Type: Oil, Gas, OG, WSW, Other
SWD Permit #: ENHR Permit #:
Gas Storage Permit #:
Spud Date: Date Shut-In:

Table with 7 columns: Conductor, Surface, Production, Intermediate, Liner, Tubing. Rows include Size, Setting Depth, Amount of Cement, Top of Cement, Bottom of Cement.

Casing Fluid Level from Surface: How Determined? Date:
Casing Squeeze(s): to w / sacks of cement, to w / sacks of cement. Date:
Do you have a valid Oil & Gas Lease? Yes No
Depth and Type: Junk in Hole at Tools in Hole at Casing Leaks: Yes No Depth of casing leak(s):
Type Completion: ALT. I ALT. II Depth of: DV Tool: w / sacks of cement Port Collar: w / sack of cement
Packer Type: Size: Inch Set at: Feet
Total Depth: Plug Back Depth: Plug Back Method:

Geological Date:

Table with 4 columns: Formation Name, Formation Top, Formation Base, Completion Information. Rows 1 and 2.

UNDER PENALTY OF PERJURY I HEREBY ATTEST THAT THE INFORMATION CONTAINED HEREIN IS TRUE AND CORRECT TO THE BEST OF MY KNOWLEDGE

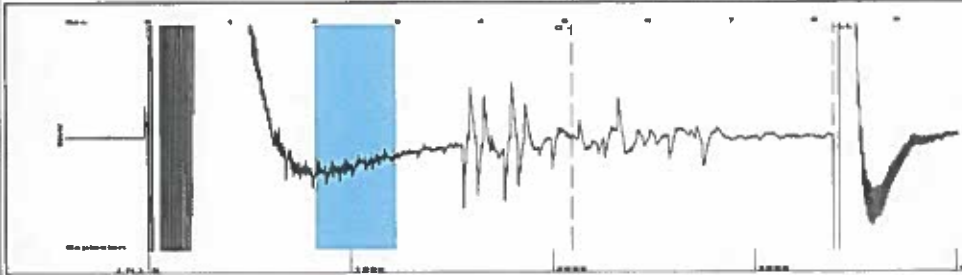
Submitted Electronically

Form with fields: Do NOT Write in This Space - KCC USE ONLY, Date Tested, Results, Date Plugged, Date Repaired, Date Put Back in Service, Review Completed by, Comments, TA Approved: Yes Denied, Date.

Mail to the Appropriate KCC Conservation Office:

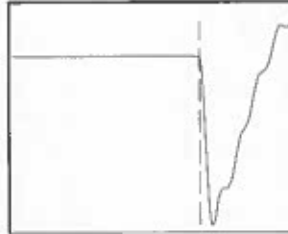
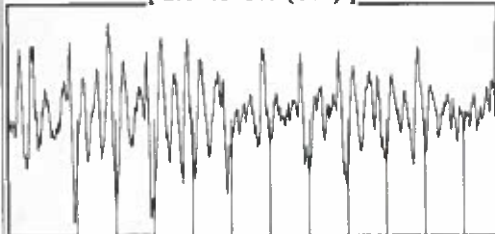
Table with 3 columns: District Office #, Address, Phone. Rows 1-4.

Group: Ulysses East Well: Warner G-3 (acquired on: 07/10/18 13:24:02)



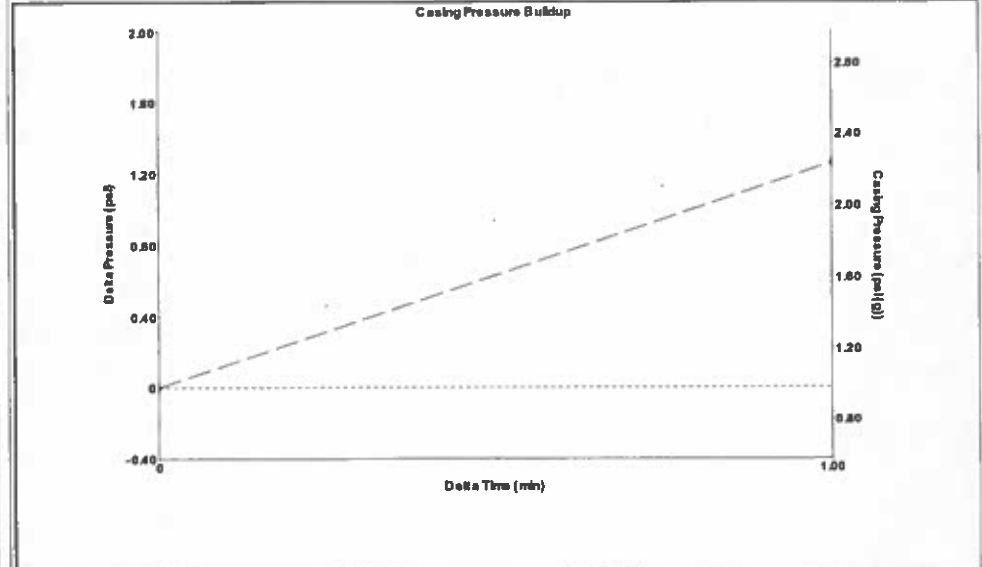
Filter Type High Pass Automatic Collar Count Yes Time 8.226 sec
 Manual Acoustic Velo 797.484 ft/s Manual JTS/sec 12.5786 Joints 106.938 J/s
 Depth 3389.93 ft

[2.0 to 3.0 (Sec)]



Analysis Method: Automatic

Group: Ulysses East Well: Warner G-3 (acquired on: 07/10/18 13:24:02)



Change in Pressure 1.26 psi PT14679
 Change in Time 1.00 min Range 0 - ? psi

Group: Ulysses East Well: Warner G-3 (acquired on: 07/10/18 13:24:02)

| | | |
|-----------------------|--------------|-------------------------------|
| Production Current | Potential | Casing Pressure |
| Oil - * - | - * - BBL/D | 1.0 psi (g) |
| Water - * - | - * - BBL/D | Casing Pressure Buildup |
| Gas - * - | - * - Mscf/D | 1.3 psi |
| | | 1.00 min |
| IPR Method | Vogel | Gas/Liquid Interface Pressure |
| PBHP/SBHP | - * - | 3.2 psi (g) |
| Production Efficiency | 0.0 | |
| Oil 40 deg.API | | Liquid Level Depth |
| Water 1.05 Sp.Gr.H2O | | 3389.93 ft |
| Gas 1.14 Sp.Gr.AIR | | Pump Intake Depth |
| | | - * - ft |
| Acoustic Velocity | 824.2 ft/s | Formation Depth |
| | | 5386.00 ft |

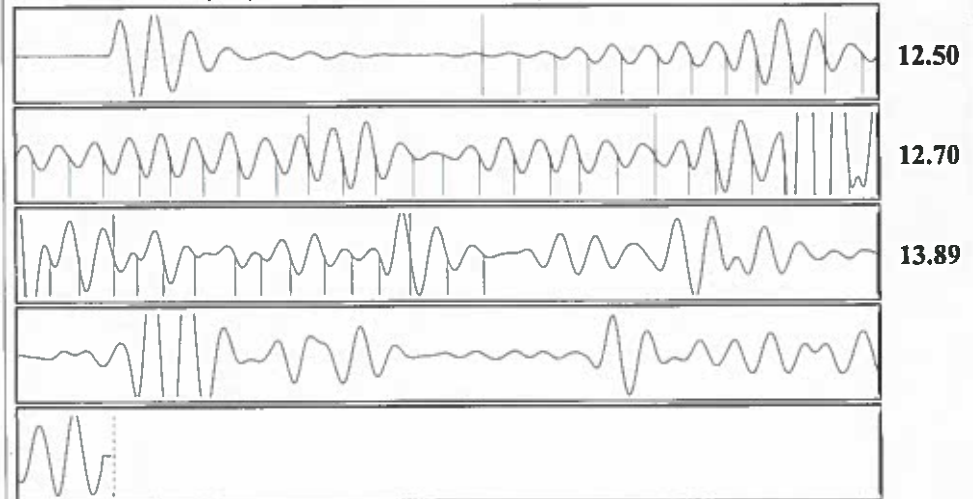


Producing
 Annular Gas Flow - * - Mscf/D
 % Liquid 28 %
 Pump Intake - * - psi (g)
 Producing BHP 262.1 psi (g)
 Static BHP - * - psi (g)

Formation Submergence
 Total Gaseous Liquid Column HIT (TVD) 1996 ft
 Equivalent Gas Free Liquid HIT (TVD) 554 ft

Acoustic Test

Group: Ulysses East Well: Warner G-3 (acquired on: 07/10/18 13:24:02)



| | | | |
|------------------------|------------|------------------------|---------|
| Acoustic Velocity | 824.2 ft/s | Joints counted | 52 |
| Joints Per Second | 13 jts/sec | Joints to liquid level | 106.938 |
| Depth to liquid level | 3389.93 ft | Filter Width | 10.5786 |
| Automatic Collar Count | Yes | Time to 1st Collar | 1.084 |
| | | | 5.084 |

STATE OF KANSAS

CORPORATION COMMISSION
CONSERVATION DIVISION
DISTRICT No. 1
210 E. FRONTVIEW, SUITE A
DODGE CITY, KS 67801



PHONE: 620-682-7933
<http://kcc.ks.gov/>

GOVERNOR JEFF COLYER, M.D.

SHARI FEIST ALBRECHT, CHAIR | JAY SCOTT EMLER, COMMISSIONER | DWIGHT D. KEEN, COMMISSIONER

July 16, 2018

Katherine McClurkan
Merit Energy Company, LLC
13727 Noel Road, Suite 1200
Dallas, TX 75240

Re: Temporary Abandonment
API 15-081-22075-00-00
Warner G 3
SE/4 Sec.26-27S-33W
Haskell County, Kansas

Dear Katherine McClurkan:

"Your temporary abandonment (TA) application for the well listed above has been approved. In accordance with K.A.R. 82-3-111 the TA status of this well will expire 07/16/2019.

- * If you return this well to service or plug it, please notify the District Office.
- * If you sell this well you are required to file a Transfer of Operator form, T-1.
- * If the well will remain temporarily abandoned, you must submit a new TA application, CP-111, before 07/16/2019.

You may contact me at the number above if you have questions.

Very truly yours,

Michael Maier"