

KANSAS CORPORATION COMMISSION  
OIL & GAS CONSERVATION DIVISION

TEMPORARY ABANDONMENT WELL APPLICATION

OPERATOR: License# \_\_\_\_\_  
 Name: \_\_\_\_\_  
 Address 1: \_\_\_\_\_  
 Address 2: \_\_\_\_\_  
 City: \_\_\_\_\_ State: \_\_\_\_\_ Zip: \_\_\_\_\_ + \_\_\_\_\_  
 Contact Person: \_\_\_\_\_  
 Phone: ( \_\_\_\_\_ ) \_\_\_\_\_  
 Contact Person Email: \_\_\_\_\_  
 Field Contact Person: \_\_\_\_\_  
 Field Contact Person Phone: ( \_\_\_\_\_ ) \_\_\_\_\_

API No. 15- \_\_\_\_\_  
 Spot Description: \_\_\_\_\_  
 \_\_\_\_\_ - \_\_\_\_\_ - \_\_\_\_\_ - \_\_\_\_\_ Sec. \_\_\_\_\_ Twp. \_\_\_\_\_ S. R. \_\_\_\_\_  E  W  
 \_\_\_\_\_ feet from  N /  S Line of Section  
 \_\_\_\_\_ feet from  E /  W Line of Section  
 GPS Location: Lat: \_\_\_\_\_, Long: \_\_\_\_\_  
(e.g. xx.xxxxx) (e.g. -xxx.xxxxx)  
 Datum:  NAD27  NAD83  WGS84  
 County: \_\_\_\_\_ Elevation: \_\_\_\_\_  GL  KB  
 Lease Name: \_\_\_\_\_ Well #: \_\_\_\_\_  
 Well Type: (check one)  Oil  Gas  OG  WSW  Other: \_\_\_\_\_  
 SWD Permit #: \_\_\_\_\_  ENHR Permit #: \_\_\_\_\_  
 Gas Storage Permit #: \_\_\_\_\_  
 Spud Date: \_\_\_\_\_ Date Shut-In: \_\_\_\_\_

	Conductor	Surface	Production	Intermediate	Liner	Tubing
Size						
Setting Depth						
Amount of Cement						
Top of Cement						
Bottom of Cement						

Casing Fluid Level from Surface: \_\_\_\_\_ How Determined? \_\_\_\_\_ Date: \_\_\_\_\_  
 Casing Squeeze(s): \_\_\_\_\_ to \_\_\_\_\_ w / \_\_\_\_\_ sacks of cement, \_\_\_\_\_ to \_\_\_\_\_ w / \_\_\_\_\_ sacks of cement. Date: \_\_\_\_\_  
(top) (bottom) (top) (bottom)  
 Do you have a valid Oil & Gas Lease?  Yes  No  
 Depth and Type:  Junk in Hole at \_\_\_\_\_  Tools in Hole at \_\_\_\_\_ Casing Leaks:  Yes  No Depth of casing leak(s): \_\_\_\_\_  
(depth) (depth)  
 Type Completion:  ALT. I  ALT. II Depth of:  DV Tool: \_\_\_\_\_ w / \_\_\_\_\_ sacks of cement  Port Collar: \_\_\_\_\_ w / \_\_\_\_\_ sack of cement  
(depth) (depth)  
 Packer Type: \_\_\_\_\_ Size: \_\_\_\_\_ Inch Set at: \_\_\_\_\_ Feet  
 Total Depth: \_\_\_\_\_ Plug Back Depth: \_\_\_\_\_ Plug Back Method: \_\_\_\_\_

**Geological Data:**

Formation Name	Formation Top	Formation Base	Completion Information
1. _____	At: _____	to _____ Feet	Perforation Interval _____ to _____ Feet or Open Hole Interval _____ to _____ Feet
2. _____	At: _____	to _____ Feet	Perforation Interval _____ to _____ Feet or Open Hole Interval _____ to _____ Feet

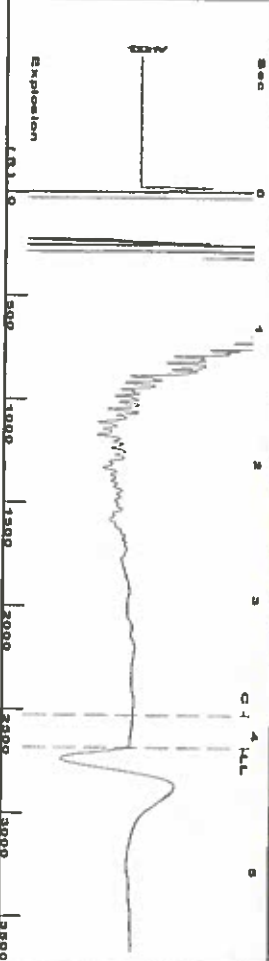
UNDER PENALTY OF PERJURY I HEREBY ATTEST THAT THE INFORMATION CONTAINED HEREIN IS TRUE AND CORRECT TO THE BEST OF MY KNOWLEDGE

Submitted Electronically

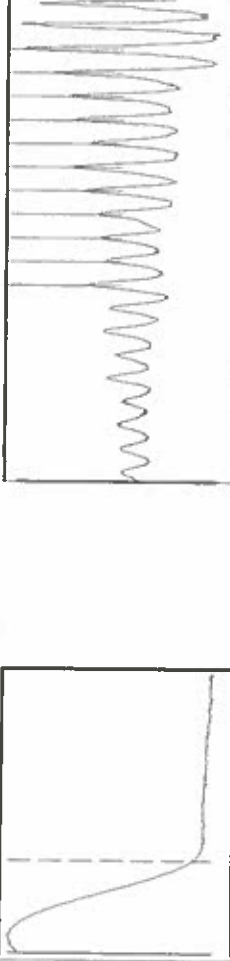
<b>Do NOT Write in This Space - KCC USE ONLY</b>	Date Tested: _____	Results: _____	Date Plugged: _____	Date Repaired: _____	Date Put Back in Service: _____
	Review Completed by: _____ Comments: _____				
TA Approved: <input type="checkbox"/> Yes <input type="checkbox"/> Denied Date: _____					

Mail to the Appropriate KCC Conservation Office:

	KCC District Office #1 - 210 E. Frontview, Suite A, Dodge City, KS 67801	Phone 620.682.7933
	KCC District Office #2 - 3450 N. Rock Road, Building 600, Suite 601, Wichita, KS 67226	Phone 316.337.7400
	KCC District Office #3 - 137 E. 21st St., Chanute, KS 66720	Phone 620.902.6450
	KCC District Office #4 - 2301 E. 13th Street, Hays, KS 67601-2651	Phone 785.261.6250



Filter Type High Pass Automatic Collar Count Yes  
 Manual Acoustic Velo 307.22 ft/s Manual JTS/sec 20.6186  
 Time 4.088 sec  
 Joints 84.5951 Jts  
 Depth 2681.66 ft



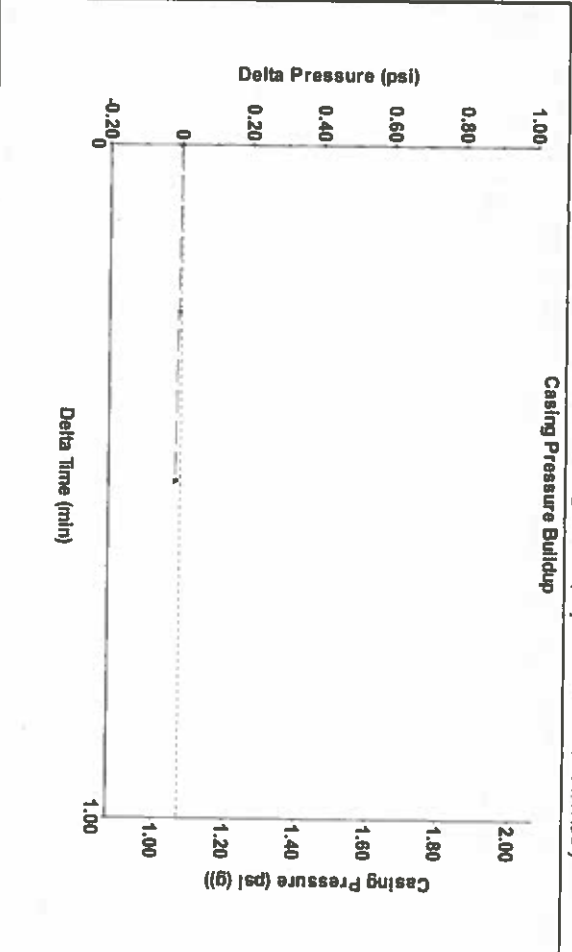
Analysis Method: Automatic

Group: Merit Energy Company-Ulysses Well: English D-2 (acquired on: 07/16/18 14:47:36)

Production Current	Potential	Casing Pressure	Producing
Oil - - -	BBL/D - - -	1.1 psi (g)	Annular
Water - - -	BBL/D - - -	Casing Pressure Buildup	Gas Flow
Gas - - -	Misc/D - - -	-0.014 psi	0 Misc/D
IPR Method	Vogel	Gas/Liquid Interface Pressure	% Liquid
PBHP/SBHP	- - -	0.50 min	100 %
Production Efficiency	0.0	2.1 psi (g)	
		Liquid Level Depth	
		2681.66 ft	
Oil 40 deg API		Pump Intake Depth	
Water 1.05 Sp.Gr.H2O		2977.00 ft	
Gas 0.70 Sp.Gr.AIR		Formation Depth	
Acoustic Velocity	1311.97 ft/s	2954.00 ft	

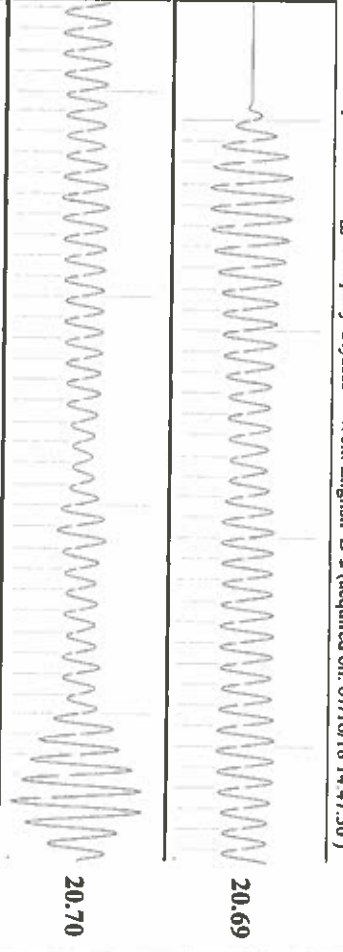


Formation Submergence  
 Total Gaseous Liquid Column HT (TYD) 295 ft  
 Equivalent Gas Free Liquid HT (TYD) 295 ft  
 Acoustic Test  
 Tim Fyfe/daniel Fluid Level Technician



Change in Pressure -0.01 psi PT9522  
 Change in Time 0.50 min Range 0 - 7 psi

Group: Merit Energy Company-Ulysses Well: English D-2 (acquired on: 07/16/18 14:47:36)



Acoustic Velocity	1311.97 ft/s	Joints counted	74
Joints Per Second	20.6935 Jts/sec	Joints to liquid level	84.5951
Depth to liquid level	2681.66 ft	Filter Width	18.6186
Automatic Collar Count	Yes	Time to 1st Collar	0.276

# STATE OF KANSAS

CORPORATION COMMISSION  
CONSERVATION DIVISION  
DISTRICT No. 1  
210 E. FRONTVIEW, SUITE A  
DODGE CITY, KS 67801



PHONE: 620-682-7933  
<http://kcc.ks.gov/>

GOVERNOR JEFF COLYER, M.D.

SHARI FEIST ALBRECHT, CHAIR | JAY SCOTT EMLER, COMMISSIONER | DWIGHT D. KEEN, COMMISSIONER

July 26, 2018

Katherine McClurkan  
Merit Energy Company, LLC  
13727 Noel Road, Suite 1200  
Dallas, TX 75240

Re: Temporary Abandonment  
API 15-067-20422-00-00  
English D 2  
NE/4 Sec.22-27S-35W  
Grant County, Kansas

Dear Katherine McClurkan:

"Your temporary abandonment (TA) application for the well listed above has been approved. In accordance with K.A.R. 82-3-111 the TA status of this well will expire 07/26/2019.

- \* If you return this well to service or plug it, please notify the District Office.
- \* If you sell this well you are required to file a Transfer of Operator form, T-1.
- \* If the well will remain temporarily abandoned, you must submit a new TA application, CP-111, before 07/26/2019.

You may contact me at the number above if you have questions.

Very truly yours,

Michael Maier"