

KANSAS CORPORATION COMMISSION
OIL & GAS CONSERVATION DIVISION

TEMPORARY ABANDONMENT WELL APPLICATION

OPERATOR: License# _____
 Name: _____
 Address 1: _____
 Address 2: _____
 City: _____ State: _____ Zip: _____ + _____
 Contact Person: _____
 Phone: (_____) _____
 Contact Person Email: _____
 Field Contact Person: _____
 Field Contact Person Phone: (_____) _____

API No. 15- _____
 Spot Description: _____
 _____ - _____ - _____ - _____ Sec. _____ Twp. _____ S. R. _____ E W
 _____ feet from N / S Line of Section
 _____ feet from E / W Line of Section
 GPS Location: Lat: _____, Long: _____
(e.g. xx.xxxxx) (e.g. -xxx.xxxxx)
 Datum: NAD27 NAD83 WGS84
 County: _____ Elevation: _____ GL KB
 Lease Name: _____ Well #: _____
 Well Type: (check one) Oil Gas OG WSW Other: _____
 SWD Permit #: _____ ENHR Permit #: _____
 Gas Storage Permit #: _____
 Spud Date: _____ Date Shut-In: _____

	Conductor	Surface	Production	Intermediate	Liner	Tubing
Size						
Setting Depth						
Amount of Cement						
Top of Cement						
Bottom of Cement						

Casing Fluid Level from Surface: _____ How Determined? _____ Date: _____
 Casing Squeeze(s): _____ to _____ w / _____ sacks of cement, _____ to _____ w / _____ sacks of cement. Date: _____
(top) (bottom) (top) (bottom)
 Do you have a valid Oil & Gas Lease? Yes No
 Depth and Type: Junk in Hole at _____ Tools in Hole at _____ Casing Leaks: Yes No Depth of casing leak(s): _____
(depth) (depth)
 Type Completion: ALT. I ALT. II Depth of: DV Tool: _____ w / _____ sacks of cement Port Collar: _____ w / _____ sack of cement
(depth) (depth)
 Packer Type: _____ Size: _____ Inch Set at: _____ Feet
 Total Depth: _____ Plug Back Depth: _____ Plug Back Method: _____

Geological Data:

Formation Name	Formation Top	Formation Base	Completion Information
1. _____	At: _____	to _____ Feet	Perforation Interval _____ to _____ Feet or Open Hole Interval _____ to _____ Feet
2. _____	At: _____	to _____ Feet	Perforation Interval _____ to _____ Feet or Open Hole Interval _____ to _____ Feet

UNDER PENALTY OF PERJURY I HEREBY ATTEST THAT THE INFORMATION CONTAINED HEREIN IS TRUE AND CORRECT TO THE BEST OF MY KNOWLEDGE

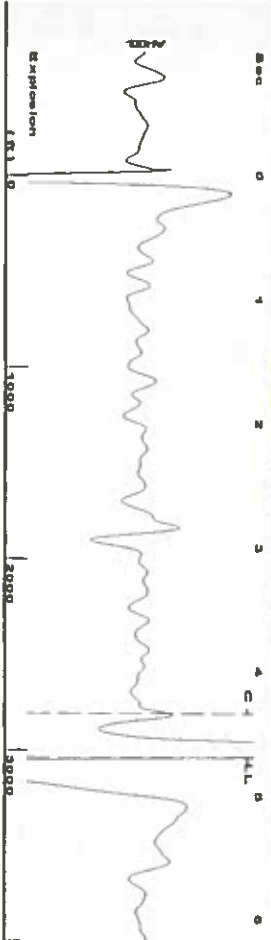
Submitted Electronically

Do NOT Write in This Space - KCC USE ONLY	Date Tested: _____	Results: _____	Date Plugged: _____	Date Repaired: _____	Date Put Back in Service: _____
	Review Completed by: _____ Comments: _____				
TA Approved: <input type="checkbox"/> Yes <input type="checkbox"/> Denied Date: _____					

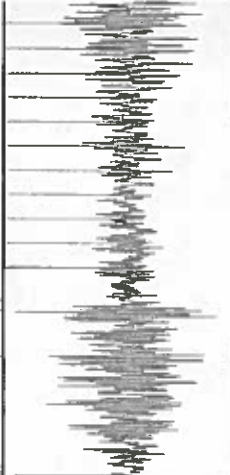
Mail to the Appropriate KCC Conservation Office:

	KCC District Office #1 - 210 E. Frontview, Suite A, Dodge City, KS 67801	Phone 620.682.7933
	KCC District Office #2 - 3450 N. Rock Road, Building 600, Suite 601, Wichita, KS 67226	Phone 316.337.7400
	KCC District Office #3 - 137 E. 21st St., Chanute, KS 66720	Phone 620.902.6450
	KCC District Office #4 - 2301 E. 13th Street, Hays, KS 67601-2651	Phone 785.261.6250

Group: Oxy USA Ulysses Well: Federal Land Bank 4-21 (acquired on: 05/31/17 14:58:10)



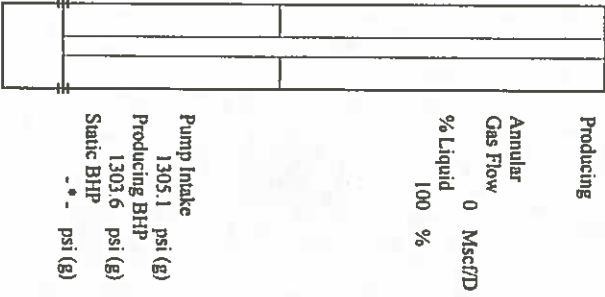
Filter Type High Pass Automatic Collar Count Yes
 Manual Acoustic Velocity 1268 ft/s Manual JTS/sec 20
 Time 4.691 sec
 Joints 95.8054 JTS
 Depth 3037.03 ft



Analysis Method: Automatic

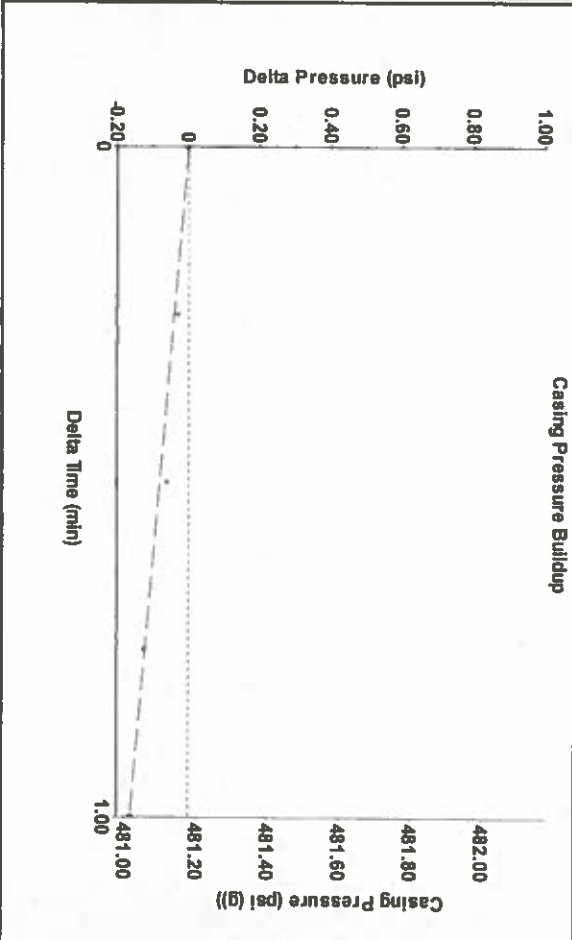
Group: Oxy USA Ulysses Well: Federal Land Bank 4-21 (acquired on: 05/31/17 14:58:10)

Production	Current	Potential	Casting Pressure	Producing
Oil	Oil	Oil	481.2 psi (g)	Annular Gas Flow
Water	Water	Water	-0.162 psi	% Liquid
Gas	Gas	Gas	1.00 min	100 %
IPR Method	PBHP/SBHP	Vogel	Gas/Liquid Interface Pressure	0 Mscf/D
Production Efficiency			518.7 psi (g)	
Oil	40 deg API	Liquid Level Depth	3037.03 ft	
Water	1.05 Sp.Gr.H2O	Pump Intake Depth	5523.00 ft	
Gas	0.65 Sp.Gr.AIR	Formation Depth	5518.00 ft	
Acoustic Velocity	1294.83 ft/s			



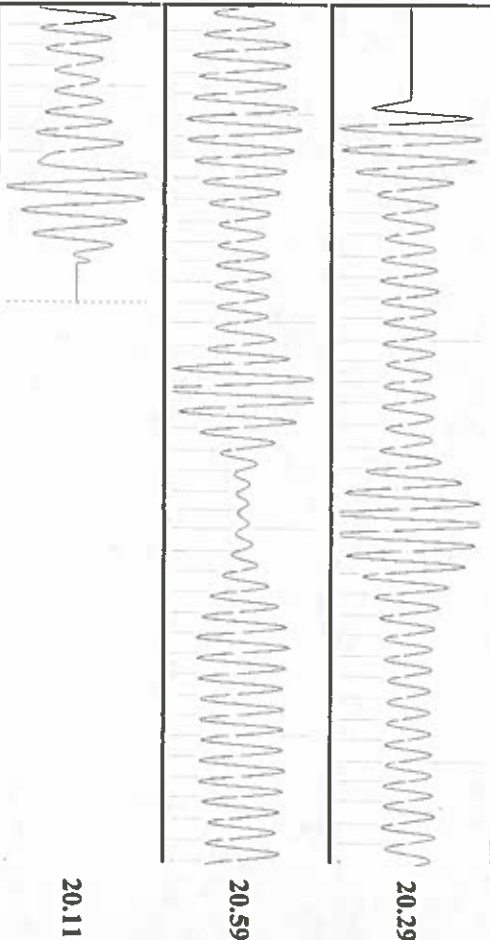
Formation Submergence
 Total Gaseous Liquid Column HT (TVD) 2486 ft
 Equivalent Gas Free Liquid HT (TVD) 2486 ft
 Acoustic Test
 Tim Frydendahl-Fluid Level Technician

Group: Oxy USA Ulysses Well: Federal Land Bank 4-21 (acquired on: 05/31/17 14:58:10)



Change in Pressure -0.16 psi PT114654
 Change in Time 1.00 min Range 0 - 7 psi

Group: Oxy USA Ulysses Well: Federal Land Bank 4-21 (acquired on: 05/31/17 14:58:10)



Acoustic Velocity	1294.83 ft/s	Joints counted	83
Joints Per Second	20.4232 JTS/sec	Joints to liquid level	95.8054
Depth to liquid level	3037.03 ft	Filter Width	18
Automatic Collar Count	Yes	Time to 1st Collar	0.276

STATE OF KANSAS

CORPORATION COMMISSION
CONSERVATION DIVISION
DISTRICT No. 1
210 E. FRONTVIEW, SUITE A
DODGE CITY, KS 67801



PHONE: 620-682-7933
<http://kcc.ks.gov/>

GOVERNOR JEFF COLYER, M.D.

SHARI FEIST ALBRECHT, CHAIR | JAY SCOTT EMLER, COMMISSIONER | DWIGHT D. KEEN, COMMISSIONER

July 10, 2018

Katherine McClurkan
Merit Energy Company, LLC
13727 Noel Road, Suite 1200
Dallas, TX 75240

Re: Temporary Abandonment
API 15-187-20724-00-00
Federal Land Bank C 4-21
SW/4 Sec.21-29S-39W
Stanton County, Kansas

Dear Katherine McClurkan:

"Your temporary abandonment (TA) application for the well listed above has been approved. In accordance with K.A.R. 82-3-111 the TA status of this well will expire 07/10/2019.

- * If you return this well to service or plug it, please notify the District Office.
- * If you sell this well you are required to file a Transfer of Operator form, T-1.
- * If the well will remain temporarily abandoned, you must submit a new TA application, CP-111, before 07/10/2019.

You may contact me at the number above if you have questions.

Very truly yours,

Michael Maier"