

KANSAS CORPORATION COMMISSION
OIL & GAS CONSERVATION DIVISION

TEMPORARY ABANDONMENT WELL APPLICATION

OPERATOR: License#
Name:
Address 1:
Address 2:
City: State: Zip:
Contact Person:
Phone:
Contact Person Email:
Field Contact Person:
Field Contact Person Phone:

API No. 15-
Spot Description:
Sec. Twp. S. R.
GPS Location: Lat: Long:
Datum:
County: Elevation:
Lease Name: Well #:
Well Type:
SWD Permit #: ENHR Permit #:
Gas Storage Permit #:
Spud Date: Date Shut-In:

Table with 7 columns: Conductor, Surface, Production, Intermediate, Liner, Tubing. Rows include Size, Setting Depth, Amount of Cement, Top of Cement, Bottom of Cement.

Casing Fluid Level from Surface: How Determined? Date:
Casing Squeeze(s): to w / sacks of cement, to w / sacks of cement. Date:
Do you have a valid Oil & Gas Lease? Yes No
Depth and Type: Junk in Hole at Tools in Hole at Casing Leaks: Yes No Depth of casing leak(s):
Type Completion: ALT. I ALT. II Depth of: DV Tool: w / sacks of cement Port Collar: w / sack of cement
Packer Type: Size: Inch Set at: Feet
Total Depth: Plug Back Depth: Plug Back Method:

Geological Data:

Table with 4 columns: Formation Name, Formation Top, Formation Base, Completion Information. Rows 1 and 2.

UNDER PENALTY OF PERJURY I HEREBY ATTEST THAT THE INFORMATION CONTAINED HEREIN IS TRUE AND CORRECT TO THE BEST OF MY KNOWLEDGE

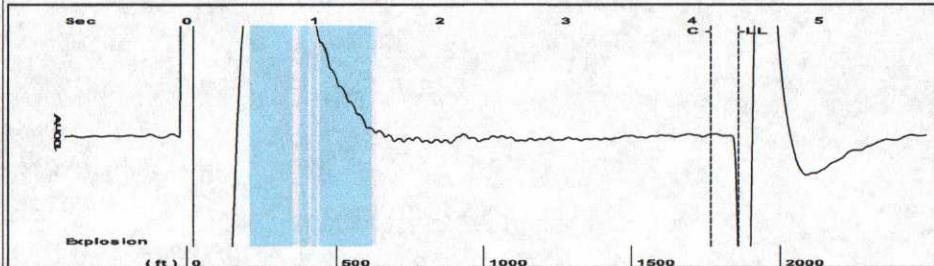
Submitted Electronically

Do NOT Write in This Space - KCC USE ONLY
Date Tested: Results: Date Plugged: Date Repaired: Date Put Back in Service:
Review Completed by: Comments:
TA Approved: Yes Denied Date:

Mail to the Appropriate KCC Conservation Office:

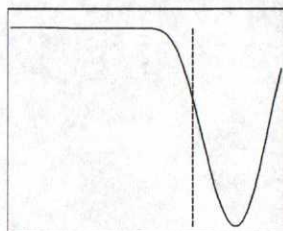
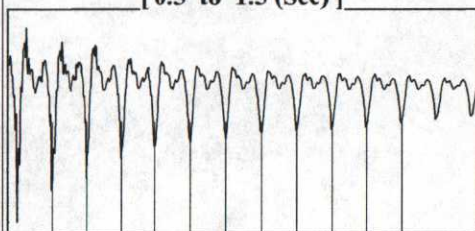
Table with 2 columns: Office Address, Phone. Rows for District Office #1, #2, #3, #4.

Group: MyWells Well: King A2 (acquired on: 06/25/18 13:15:41)



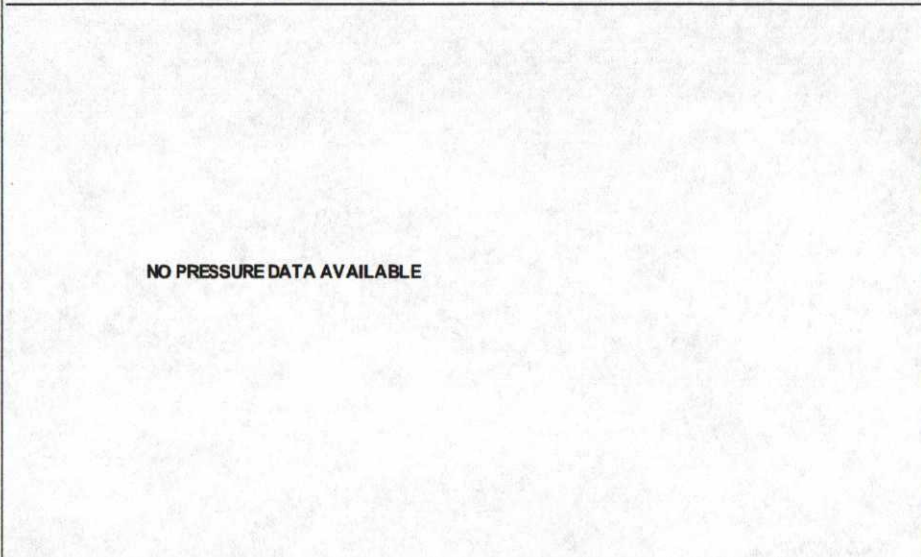
Filter Type High Pass Automatic Collar Count Yes Time 4.367 sec
 Manual Acoustic Veloc 849.866 ft/s Manual JTS/sec 13.4048 Joints 58.6477 Jts
 Depth 1859.13 ft

[0.5 to 1.5 (Sec)]



Analysis Method: Automatic

Group: MyWells Well: King A2 (acquired on: 06/25/18 13:15:41)



Change in Pressure -0.04 psi PT6854
 Range 0 - ? psi
 Change in Time 3.75 min

Group: MyWells Well: King A2 (acquired on: 06/25/18 13:15:41)

Production Current	Potential	Casing Pressure
Oil 2	- * - BBL/D	0.3 psi (g)
Water 3	- * - BBL/D	Casing Pressure Buildup
Gas - * -	- * - Mscf/D	-0.0 psi
		3.75 min
IPR Method	Vogel	Gas/Liquid Interface Pressure
PBHP/SBHP	- * -	1.4 psi (g)
Production Efficiency	0.0	
Oil 40 deg.API		Liquid Level Depth
Water 1.05 Sp.Gr.H2O		1859.13 ft
Gas 1.11 Sp.Gr.AIR		Pump Intake Depth
		3818.00 ft
Acoustic Velocity	851.446 ft/s	Formation Depth
		3640.00 ft



Producing

Annular Gas Flow 0 Mscf/D

% Liquid 100 %

Pump Intake 654.6 psi (g)

Producing BHP 598.0 psi (g)

Static BHP - * - psi (g)

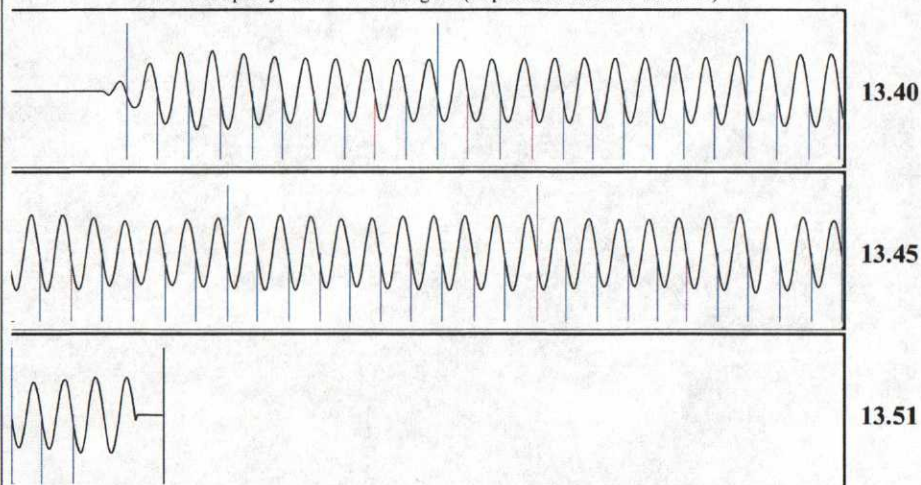
Formation Submergence

Total Gaseous Liquid Column HT (TVD) 1959 ft

Equivalent Gas Free Liquid HT (TVD) 1959 ft

Acoustic Test

Group: MyWells Well: King A2 (acquired on: 06/25/18 13:15:41)



Acoustic Velocity	851.446 ft/s	Joints counted	52
Joints Per Second	13.4298 jts/sec	Joints to liquid level	58.6477
Depth to liquid level	1859.13 ft	Filter Width	11.4048
Automatic Collar Count	Yes	Time to 1st Collar	0.276
			4.148

STATE OF KANSAS

CORPORATION COMMISSION
CONSERVATION DIVISION
DISTRICT OFFICE No. 4
2301 E. 13TH STREET
HAYS, KS 67601-2651



PHONE: 785-261-6250
FAX: 785-625-0564
<http://kcc.ks.gov/>

GOVERNOR JEFF COLYER, M.D.

SHARI FEIST ALBRECHT, CHAIR | JAY SCOTT EMLER, COMMISSIONER | DWIGHT D. KEEN, COMMISSIONER

July 11, 2018

Rodney L King
King, Rodney L. dba King Oil Operation
1746 150TH AVE.
ELLIS, KS 67637-9300

Re: Temporary Abandonment
API 15-051-26297-00-00
KING A-2
NE/4 Sec.11-13S-20W
Ellis County, Kansas

Dear Rodney L King:

"Your temporary abandonment (TA) application for the well listed above has been approved. In accordance with K.A.R. 82-3-111 the TA status of this well will expire 07/11/2019.

- * If you return this well to service or plug it, please notify the District Office.
- * If you sell this well you are required to file a Transfer of Operator form, T-1.
- * If the well will remain temporarily abandoned, you must submit a new TA application, CP-111, before 07/11/2019.

You may contact me at the number above if you have questions.

Very truly yours,

RICHARD WILLIAMS"