

KANSAS CORPORATION COMMISSION
OIL & GAS CONSERVATION DIVISION

TEMPORARY ABANDONMENT WELL APPLICATION

OPERATOR: License#
Name:
Address 1:
Address 2:
City: State: Zip:
Contact Person:
Phone:
Contact Person Email:
Field Contact Person:
Field Contact Person Phone:

API No. 15-
Spot Description:
Sec. Twp. S. R.
GPS Location: Lat, Long
Datum: NAD27, NAD83, WGS84
County: Elevation:
Lease Name: Well #:
Well Type: Oil, Gas, OG, WSW, Other
SWD Permit #: ENHR Permit #:
Gas Storage Permit #:
Spud Date: Date Shut-In:

Table with 7 columns: Conductor, Surface, Production, Intermediate, Liner, Tubing. Rows include Size, Setting Depth, Amount of Cement, Top of Cement, Bottom of Cement.

Casing Fluid Level from Surface: How Determined? Date:
Casing Squeeze(s): to w / sacks of cement, to w / sacks of cement. Date:
Do you have a valid Oil & Gas Lease? Yes No
Depth and Type: Junk in Hole at Tools in Hole at Casing Leaks: Yes No Depth of casing leak(s):
Type Completion: ALT. I ALT. II Depth of: DV Tool: w / sacks of cement Port Collar: w / sack of cement
Packer Type: Size: Inch Set at: Feet
Total Depth: Plug Back Depth: Plug Back Method:

Geological Date:

Table with 4 columns: Formation Name, Formation Top, Formation Base, Completion Information. Rows 1 and 2.

UNDER PENALTY OF PERJURY I HEREBY ATTEST THAT THE INFORMATION CONTAINED HEREIN IS TRUE AND CORRECT TO THE BEST OF MY KNOWLEDGE

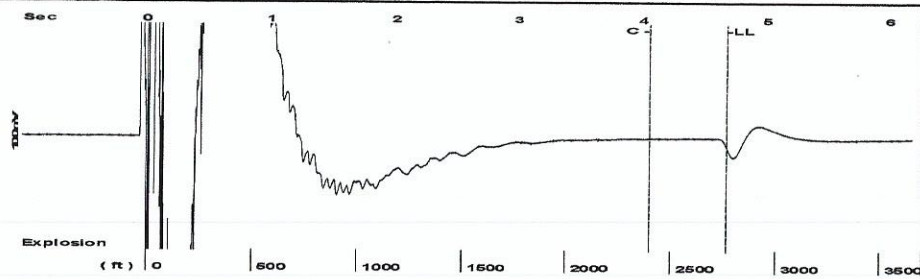
Submitted Electronically

Do NOT Write in This Space - KCC USE ONLY
Date Tested: Results: Date Plugged: Date Repaired: Date Put Back in Service:
Review Completed by: Comments:
TA Approved: Yes Denied Date:

Mail to the Appropriate KCC Conservation Office:

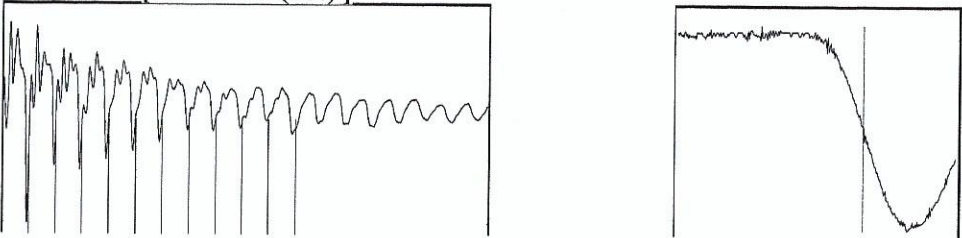
Table with 3 columns: District Office #, Address, Phone. Rows 1-4.

Group: Belpre Well: Britten B 3-15 (acquired on: 06/05/18 14:05:46)



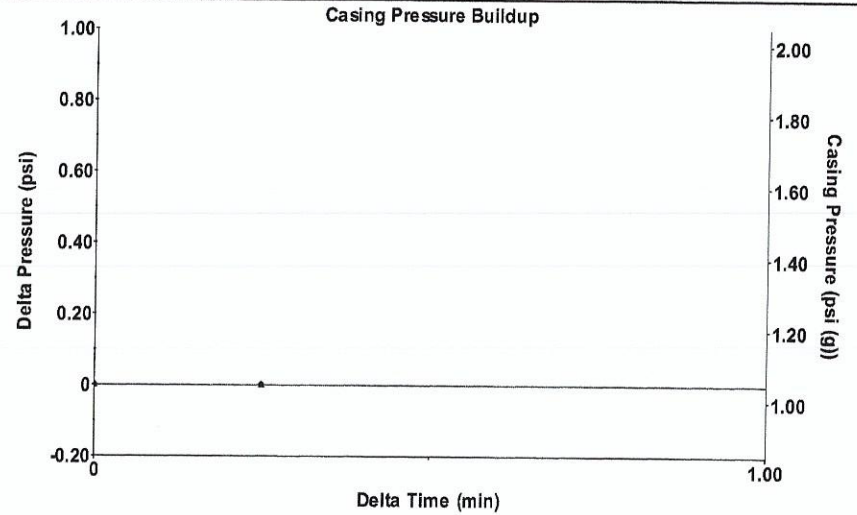
Filter Type High Pass Automatic Collar Count Yes Time 4.674 sec  
 Manual Acoustic Veloc 1148.36 ft/s Manual JTS/sec 18.1818 Joints 87.5142 Jts  
 Depth 2763.70 ft

[ 0.5 to 1.5 (Sec) ]



Analysis Method: Automatic

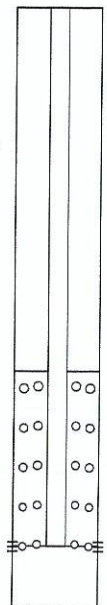
Group: Belpre Well: Britten B 3-15 (acquired on: 06/05/18 14:05:46)



Change in Pressure 0.00 psi PT13440  
 Change in Time 0.25 min Range 0 - ? psi

Group: Belpre Well: Britten B 3-15 (acquired on: 06/05/18 14:05:46)

Production Current Potential Casing Pressure 1.0 psi (g)  
 Oil - \* - BBL/D Casing Pressure Buildup 0.000 psi  
 Water - \* - BBL/D 0.25 min  
 Gas - \* - Mscf/D  
 IPR Method Vogel Gas/Liquid Interface Pressure 2.3 psi (g)  
 PBHP/SBHP - \* -  
 Production Efficiency 0.0  
 Oil 40 deg.API Liquid Level Depth 2763.70 ft  
 Water 1.05 Sp.Gr.H2O  
 Gas 0.81 Sp.Gr.AIR Pump Intake Depth 4359.00 ft  
 Acoustic Velocity 1182.58 ft/s Formation Depth 4362.00 ft

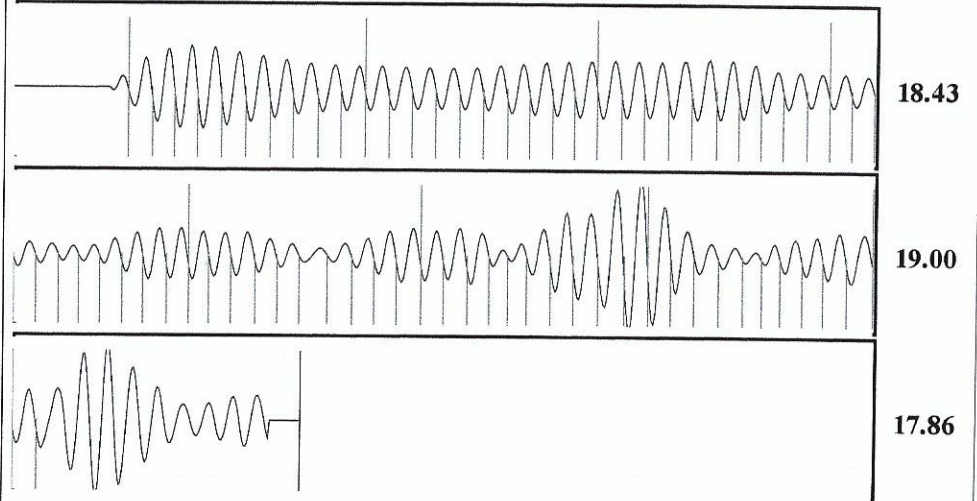


Producing Annular Gas Flow 0 Mscf/D % Liquid 100 %  
 Pump Intake 537.5 psi (g)  
 Producing BHP 538.8 psi (g)  
 Static BHP - \* - psi (g)

Formation Submergence Total Gaseous Liquid Column HT (TVD) 1595 ft  
 Equivalent Gas Free Liquid HT (TVD) 1595 ft

Acoustic Test

Group: Belpre Well: Britten B 3-15 (acquired on: 06/05/18 14:05:46)



Acoustic Velocity 1182.58 ft/s Joints counted 71  
 Joints Per Second 18.7236 jts/sec Joints to liquid level 87.5142  
 Depth to liquid level 2763.7 ft Filter Width 16.1818 20.1818  
 Automatic Collar Count Yes Time to 1st Collar 0.264 4.056

# STATE OF KANSAS

CORPORATION COMMISSION  
CONSERVATION DIVISION  
DISTRICT No. 1  
210 E. FRONTVIEW, SUITE A  
DODGE CITY, KS 67801



PHONE: 620-682-7933  
<http://kcc.ks.gov/>

GOVERNOR JEFF COLYER, M.D.

SHARI FEIST ALBRECHT, CHAIR | JAY SCOTT EMLER, COMMISSIONER | DWIGHT D. KEEN, COMMISSIONER

June 19, 2018

Margery L. Nagel  
F. G. Holl Company L.L.C.  
9431 E CENTRAL STE 100  
WICHITA, KS 67206-2563

Re: Temporary Abandonment  
API 15-047-21037-00-00  
BRITTON B 3-15  
NW/4 Sec.15-24S-17W  
Edwards County, Kansas

Dear Margery L. Nagel:

"Your temporary abandonment (TA) application for the well listed above has been approved. In accordance with K.A.R. 82-3-111 the TA status of this well will expire 06/19/2019.

- \* If you return this well to service or plug it, please notify the District Office.
- \* If you sell this well you are required to file a Transfer of Operator form, T-1.
- \* If the well will remain temporarily abandoned, you must submit a new TA application, CP-111, before 06/19/2019.

You may contact me at the number above if you have questions.

Very truly yours,

Michael Maier"