

KANSAS CORPORATION COMMISSION
OIL & GAS CONSERVATION DIVISION

TEMPORARY ABANDONMENT WELL APPLICATION

OPERATOR: License#
Name:
Address 1:
Address 2:
City: State: Zip:
Contact Person:
Phone:
Contact Person Email:
Field Contact Person:
Field Contact Person Phone:

API No. 15-
Spot Description:
Sec. Twp. S. R.
GPS Location: Lat: Long:
Datum: NAD27 NAD83 WGS84
County: Elevation:
Lease Name: Well #:
Well Type: Oil Gas OG WSW Other:
SWD Permit #: ENHR Permit #:
Gas Storage Permit #:
Spud Date: Date Shut-In:

Table with 7 columns: Conductor, Surface, Production, Intermediate, Liner, Tubing. Rows include Size, Setting Depth, Amount of Cement, Top of Cement, Bottom of Cement.

Casing Fluid Level from Surface: How Determined? Date:
Casing Squeeze(s): to w / sacks of cement, to w / sacks of cement. Date:
Do you have a valid Oil & Gas Lease? Yes No
Depth and Type: Junk in Hole at Tools in Hole at Casing Leaks: Yes No Depth of casing leak(s):
Type Completion: ALT. I ALT. II Depth of: DV Tool: w / sacks of cement Port Collar: w / sack of cement
Packer Type: Size: Inch Set at: Feet
Total Depth: Plug Back Depth: Plug Back Method:

Geological Date:

Table with 4 columns: Formation Name, Formation Top, Formation Base, Completion Information. Rows 1 and 2.

UNDER PENALTY OF PERJURY I HEREBY ATTEST THAT THE INFORMATION CONTAINED HEREIN IS TRUE AND CORRECT TO THE BEST OF MY KNOWLEDGE

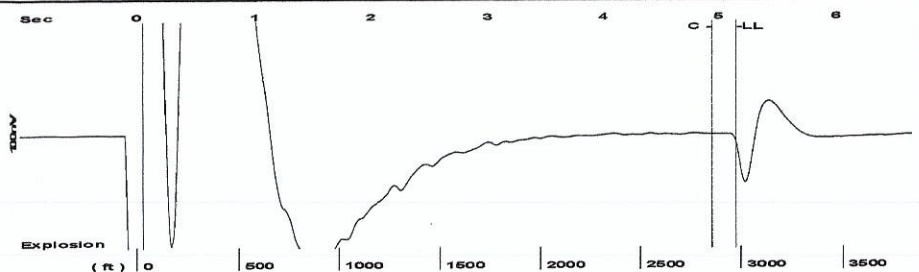
Submitted Electronically

Do NOT Write in This Space - KCC USE ONLY
Date Tested: Results: Date Plugged: Date Repaired: Date Put Back in Service:
Review Completed by: Comments:
TA Approved: Yes Denied Date:

Mail to the Appropriate KCC Conservation Office:

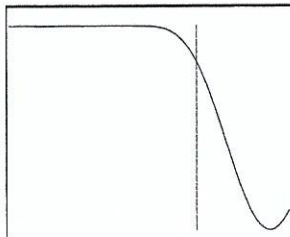
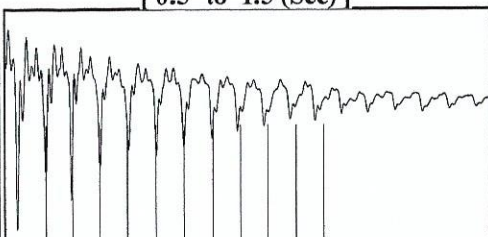
Table with 2 columns: Office Address, Phone. Rows for District Office #1, #2, #3, #4.

Group: Belpre Well: Keller A 1-36 (acquired on: 06/05/18 13:05:22)



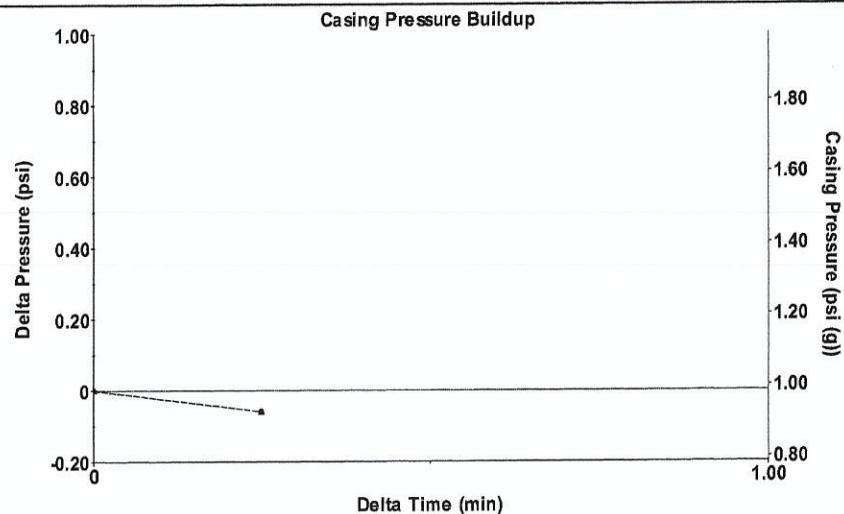
Filter Type High Pass Automatic Collar Count Yes Time 5.153 sec
 Manual Acoustic Velocity 112.28 ft/s Manual JTS/sec 17.5439 Joints 93.8314 Jts
 Depth 2974.46 ft

[0.5 to 1.5 (Sec)]



Analysis Method: Automatic

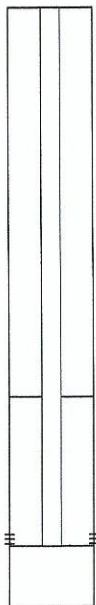
Group: Belpre Well: Keller A 1-36 (acquired on: 06/05/18 13:05:22)



Change in Pressure -0.06 psi PT13440
 Change in Time 0.25 min Range 0 - ? psi

Group: Belpre Well: Keller A 1-36 (acquired on: 06/05/18 13:05:22)

Production Current	Potential	Casing Pressure
Oil - * -	- * - BBL/D	1.0 psi (g)
Water - * -	- * - BBL/D	Casing Pressure Buildup
Gas - * -	- * - Mscf/D	-0.060 psi
		0.25 min
IPR Method	Vogel	Gas/Liquid Interface Pressure
PBHP/SBHP	- * -	2.4 psi (g)
Production Efficiency	0.0	
Oil 40 deg.API		Liquid Level Depth
Water 1.05 Sp.Gr.H2O		2974.46 ft
Gas 0.84 Sp.Gr.AIR		Pump Intake Depth
		4325.00 ft
Acoustic Velocity 1154.46 ft/s		Formation Depth
		4258.00 ft

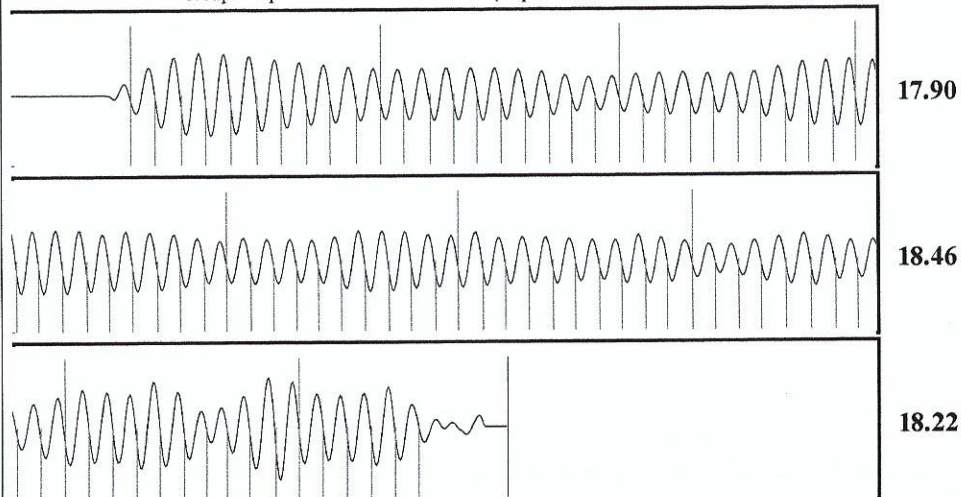


Producing
Annular Gas Flow
0 Mscf/D
% Liquid
100 %
Pump Intake
456.8 psi (g)
Producing BHP
434.9 psi (g)
Static BHP
- * - psi (g)

Formation Submergence
 Total Gaseous Liquid Column HT (TVD) 1351 ft
 Equivalent Gas Free Liquid HT (TVD) 1351 ft

Acoustic Test

Group: Belpre Well: Keller A 1-36 (acquired on: 06/05/18 13:05:22)



Acoustic Velocity	1154.46 ft/s	Joints counted	85
Joints Per Second	18.2091 jts/sec	Joints to liquid level	93.8314
Depth to liquid level	2974.46 ft	Filter Width	15.5439
Automatic Collar Count	Yes	Time to 1st Collar	0.28
			19.5439
			4.948

STATE OF KANSAS

CORPORATION COMMISSION
CONSERVATION DIVISION
DISTRICT No. 1
210 E. FRONTVIEW, SUITE A
DODGE CITY, KS 67801



PHONE: 620-682-7933
<http://kcc.ks.gov/>

GOVERNOR JEFF COLYER, M.D.

SHARI FEIST ALBRECHT, CHAIR | JAY SCOTT EMLER, COMMISSIONER | DWIGHT D. KEEN, COMMISSIONER

June 19, 2018

Margery L. Nagel
F. G. Holl Company L.L.C.
9431 E CENTRAL STE 100
WICHITA, KS 67206-2563

Re: Temporary Abandonment
API 15-145-21418-00-00
KELLER A 1-36
SE/4 Sec.36-23S-17W
Pawnee County, Kansas

Dear Margery L. Nagel:

"Your temporary abandonment (TA) application for the well listed above has been approved. In accordance with K.A.R. 82-3-111 the TA status of this well will expire 06/19/2019.

- * If you return this well to service or plug it, please notify the District Office.
- * If you sell this well you are required to file a Transfer of Operator form, T-1.
- * If the well will remain temporarily abandoned, you must submit a new TA application, CP-111, before 06/19/2019.

You may contact me at the number above if you have questions.

Very truly yours,

Michael Maier"