

KANSAS CORPORATION COMMISSION
OIL & GAS CONSERVATION DIVISION

TEMPORARY ABANDONMENT WELL APPLICATION

OPERATOR: License#
Name:
Address 1:
Address 2:
City: State: Zip:
Contact Person:
Phone:
Contact Person Email:
Field Contact Person:
Field Contact Person Phone:

API No. 15-
Spot Description:
Sec. Twp. S. R.
GPS Location: Lat, Long
Datum: NAD27, NAD83, WGS84
County: Elevation:
Lease Name: Well #:
Well Type: Oil, Gas, OG, WSW, Other
SWD Permit #: ENHR Permit #:
Gas Storage Permit #:
Spud Date: Date Shut-In:

Table with 7 columns: Conductor, Surface, Production, Intermediate, Liner, Tubing. Rows include Size, Setting Depth, Amount of Cement, Top of Cement, Bottom of Cement.

Casing Fluid Level from Surface: How Determined? Date:
Casing Squeeze(s): to w / sacks of cement, to w / sacks of cement. Date:
Do you have a valid Oil & Gas Lease? Yes No
Depth and Type: Junk in Hole at Tools in Hole at Casing Leaks: Yes No Depth of casing leak(s):
Type Completion: ALT. I ALT. II Depth of: DV Tool: w / sacks of cement Port Collar: w / sack of cement
Packer Type: Size: Inch Set at: Feet
Total Depth: Plug Back Depth: Plug Back Method:

Geological Data:

Table with 4 columns: Formation Name, Formation Top, Formation Base, Completion Information. Rows 1 and 2.

UNDER PENALTY OF PERJURY I HEREBY ATTEST THAT THE INFORMATION CONTAINED HEREIN IS TRUE AND CORRECT TO THE BEST OF MY KNOWLEDGE

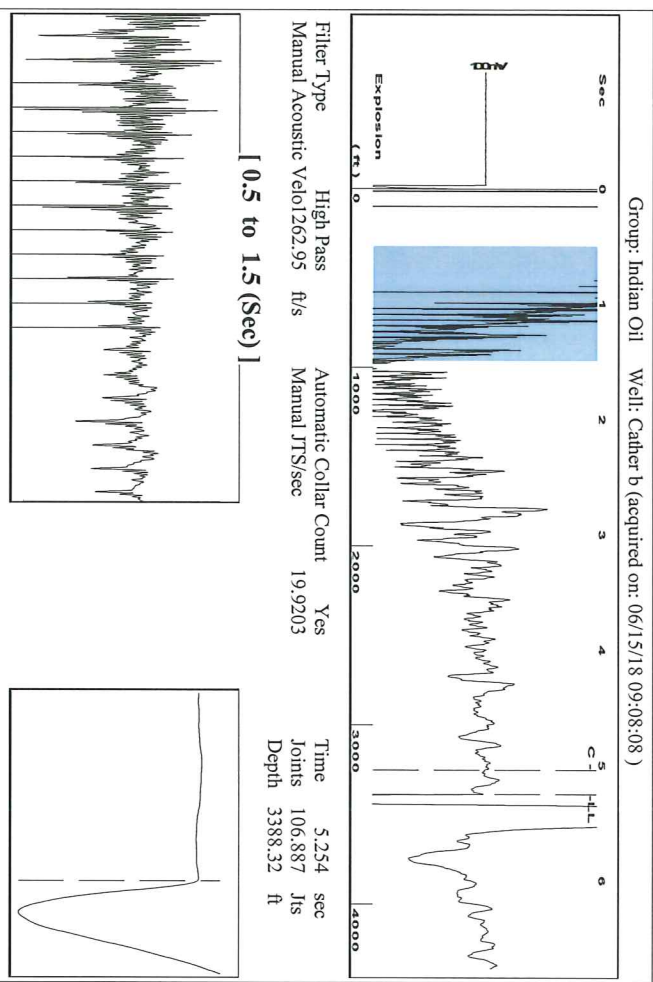
Submitted Electronically

Do NOT Write in This Space - KCC USE ONLY
Date Tested: Results: Date Plugged: Date Repaired: Date Put Back in Service:
Review Completed by: Comments:
TA Approved: Yes Denied Date:

Mail to the Appropriate KCC Conservation Office:

Table with 2 columns: Office Address, Phone. Rows for District Office #1, #2, #3, #4.

**Indian Oil Co., Inc.  
Acoustic Fluid Level**



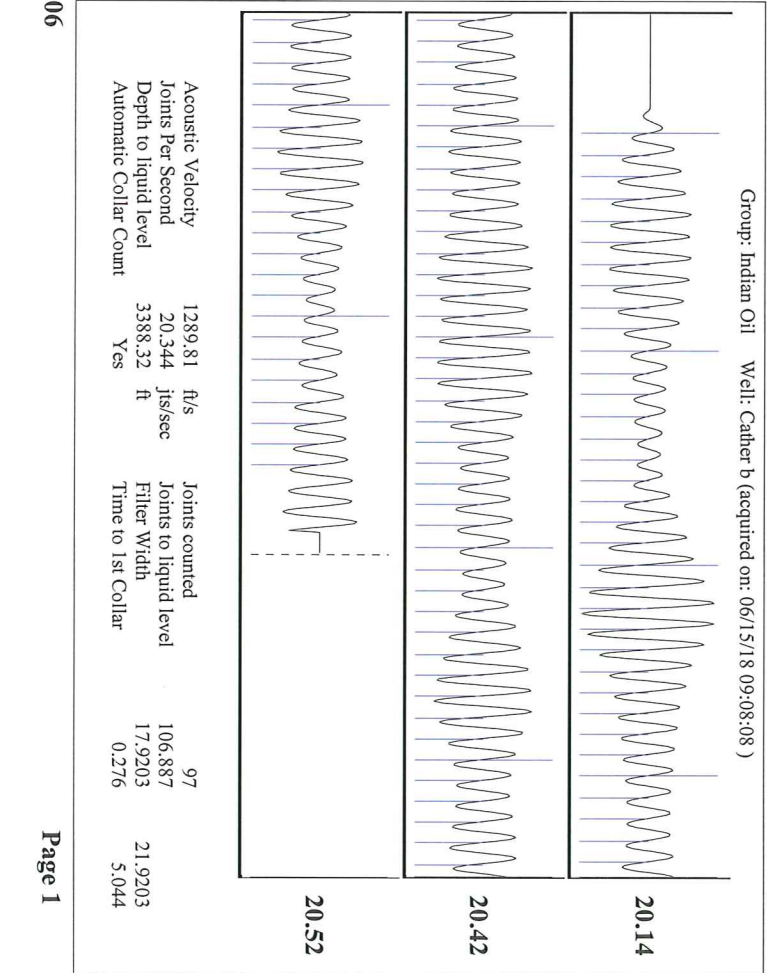
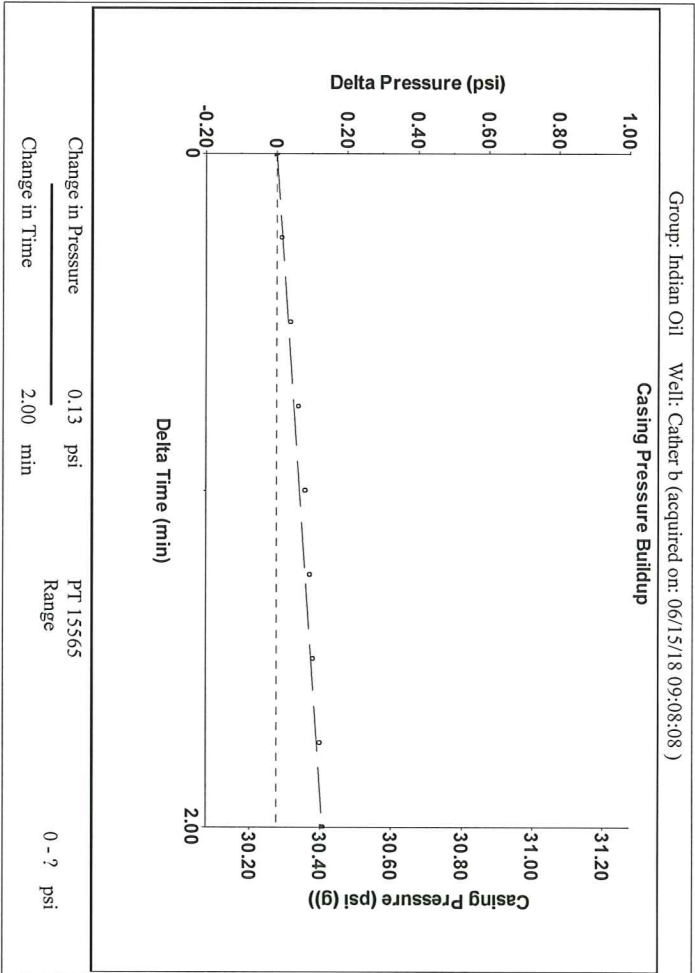
**Analysis Method: Automatic**

Group: Indian Oil Well: Cather b (acquired on: 06/15/18 09:08:08 )

Production Current	Potential	Casing Pressure	Producing
Oil -*- BBL/D	-*- BBL/D	30.3 psi (g)	Annular Gas Flow -*- Mscf/D
Water -*- BBL/D	-*- BBL/D	Casing Pressure Buildup 0.1 psi	% Liquid 100 %
Gas -*- Mscf/D	-*- Mscf/D	2.00 min	
IPR Method PBHP/SBHP	Vogel -*-	Gas/Liquid Interface Pressure -*- psi (g)	
Production Efficiency	0.0		
Oil 40 deg API		Liquid Level Depth 3388.32 ft	Pump Intake -*- psi (g)
Water 1.05 Sp.Gr:H2O		Pump Intake Depth 4700.00 ft	Producing BHP -*- psi (g)
Gas 0.71 Sp.Gr:AIR		Formation Depth 4612.00 ft	Static BHP -*- psi (g)
Acoustic Velocity 1289.81 ft/s			

Formation Submergence  
Total Gaseous Liquid Column HT (TVD) -\*- ft  
Equivalent Gas Free Liquid HT (TVD) -\*- ft

-61518-1



# STATE OF KANSAS

CORPORATION COMMISSION  
CONSERVATION DIVISION  
DISTRICT OFFICE No. 2  
3450 N. ROCK ROAD  
BUILDING 600, SUITE 601  
WICHITA, KS 67226



PHONE: 316-337-7400  
FAX: 316-630-4005  
<http://kcc.ks.gov/>

GOVERNOR JEFF COLYER, M.D.

SHARI FEIST ALBRECHT, CHAIR | JAY SCOTT EMLER, COMMISSIONER | DWIGHT D. KEEN, COMMISSIONER

July 12, 2018

Anthony Farrar  
Indian Oil Co., Inc.  
PO BOX 209  
2507 SE US 160 HWY  
MEDICINE LODGE, KS 67104-0209

Re: Temporary Abandonment  
API 15-077-30162-00-01  
CATHER 'B' OWWO #1-3  
SW/4 Sec.03-34S-08W  
Harper County, Kansas

Dear Anthony Farrar:

"Your temporary abandonment (TA) application for the well listed above has been approved. In accordance with K.A.R. 82-3-111 the TA status of this well will expire 07/12/2019.

- \* If you return this well to service or plug it, please notify the District Office.
- \* If you sell this well you are required to file a Transfer of Operator form, T-1.
- \* If the well will remain temporarily abandoned, you must submit a new TA application, CP-111, before 07/12/2019.

You may contact me at the number above if you have questions.

Very truly yours,

Steve VanGieson"