

KANSAS CORPORATION COMMISSION
OIL & GAS CONSERVATION DIVISION

TEMPORARY ABANDONMENT WELL APPLICATION

OPERATOR: License#
Name:
Address 1:
Address 2:
City: State: Zip:
Contact Person:
Phone:
Contact Person Email:
Field Contact Person:
Field Contact Person Phone:

API No. 15-
Spot Description:
Sec. Twp. S. R.
GPS Location: Lat: Long:
Datum: NAD27 NAD83 WGS84
County: Elevation:
Lease Name: Well #:
Well Type: Oil Gas OG WSW Other:
SWD Permit #: ENHR Permit #:
Gas Storage Permit #:
Spud Date: Date Shut-In:

Table with 7 columns: Conductor, Surface, Production, Intermediate, Liner, Tubing. Rows include Size, Setting Depth, Amount of Cement, Top of Cement, Bottom of Cement.

Casing Fluid Level from Surface: How Determined? Date:
Casing Squeeze(s): to w / sacks of cement, to w / sacks of cement. Date:
Do you have a valid Oil & Gas Lease? Yes No
Depth and Type: Junk in Hole at Tools in Hole at Casing Leaks: Yes No Depth of casing leak(s):
Type Completion: ALT. I ALT. II Depth of: DV Tool: w / sacks of cement Port Collar: w / sack of cement
Packer Type: Size: Inch Set at: Feet
Total Depth: Plug Back Depth: Plug Back Method:

Geological Date:

Table with 4 columns: Formation Name, Formation Top, Formation Base, Completion Information. Rows 1 and 2.

UNDER PENALTY OF PERJURY I HEREBY ATTEST THAT THE INFORMATION CONTAINED HEREIN IS TRUE AND CORRECT TO THE BEST OF MY KNOWLEDGE

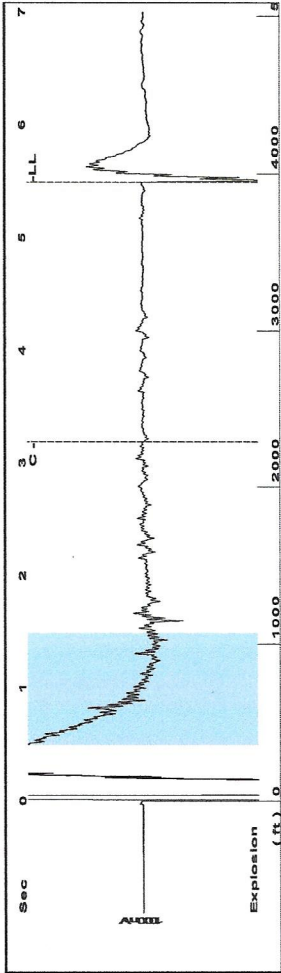
Submitted Electronically

Do NOT Write in This Space - KCC USE ONLY
Date Tested: Results: Date Plugged: Date Repaired: Date Put Back in Service:
Review Completed by: Comments:
TA Approved: Yes Denied Date:

Mail to the Appropriate KCC Conservation Office:

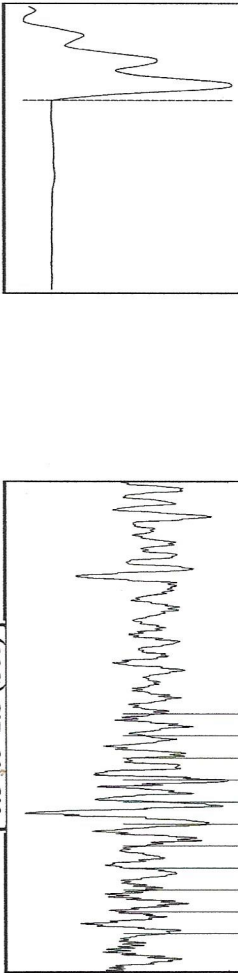
Table with 3 columns: District Office, Address, Phone. Rows for District Office #1, #2, #3, #4.

Group: MyWells Well: Finnup B#5 (acquired on: 06/29/18 08:38:25)



Filter Type High Pass Automatic Collar Count Yes
 Manual Acoustic Velocity 1400 ft/s Manual JTS/sec 22.2222
 Time 5.495 sec
 Joints 125.226 Jts
 Depth 3944.62 ft

[0.5 to 1.5 (Sec)]

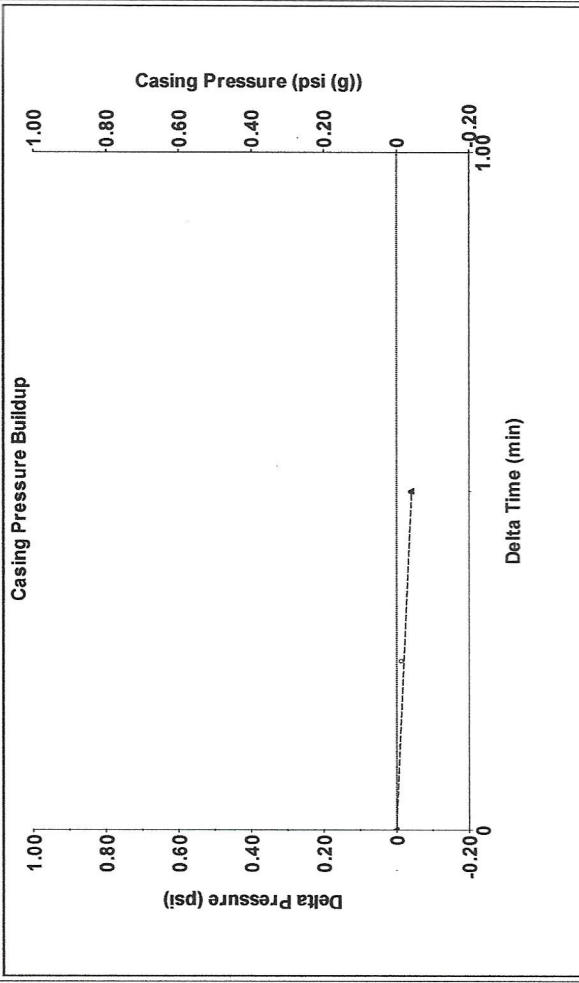


Analysis Method: Automatic

Group: MyWells Well: Finnup B#5 (acquired on: 06/29/18 08:38:25)

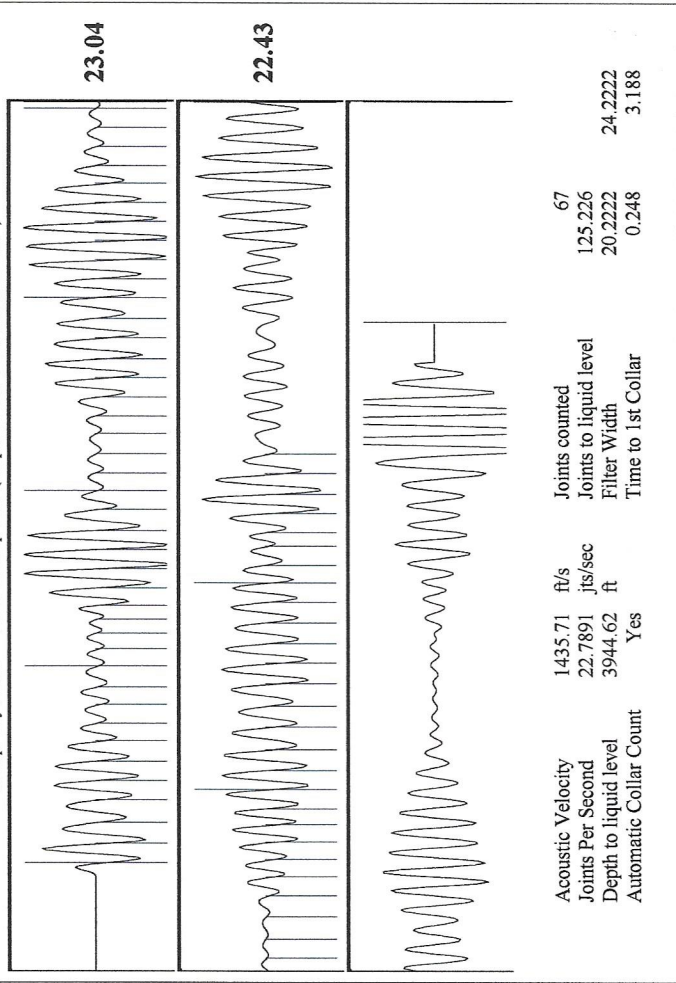
Production Current	Potential	Casing Pressure	Producing
Oil 0	- * - BBL/D	0.0 psi (g)	Annular
Water 0	- * - BBL/D	Casing Pressure Buildup	Gas Flow 0 Mscf/D
Gas 0.0	- * - Mscf/D	-0.042 psi	% Liquid 100 %
IPR Method	Vogel	Gas/Liquid Interface Pressure	Pump Intake
PBHP/SBHP	- * -	0.50 min	174.1 psi (g)
Production Efficiency	0.0	1.2 psi (g)	Producing BHP
Oil 39 deg.API		Liquid Level Depth	130.0 psi (g)
Water 1.05 Sp.Gr.H2O		3944.62 ft	Static BHP
Gas 0.60 Sp.Gr.AIR		Pump Intake Depth	- * - psi (g)
Acoustic Velocity	1435.71 ft/s	4325.00 ft	
		Formation Depth	
		4228.00 ft	
Formation Submergence			
Total Gaseous Liquid Column HT (TVD)	380 ft		
Equivalent Gas Free Liquid HT (TVD)	380 ft		
Acoustic Test			

Group: MyWells Well: Finnup B#5 (acquired on: 06/29/18 08:38:25)



Change in Pressure -0.04 psi
 Change in Time 0.50 min
 PT15504 Range

Group: MyWells Well: Finnup B#5 (acquired on: 06/29/18 08:38:25)



Acoustic Velocity 1435.71 ft/s Joints counted 67
 Joints Per Second 22.7891 Jts/sec Joints to liquid level 125.226
 Depth to liquid level 3944.62 ft Filter Width 20.2222
 Automatic Collar Count Yes Time to 1st Collar 3.188

STATE OF KANSAS

CORPORATION COMMISSION
CONSERVATION DIVISION
DISTRICT No. 1
210 E. FRONTVIEW, SUITE A
DODGE CITY, KS 67801



PHONE: 620-682-7933
<http://kcc.ks.gov/>

GOVERNOR JEFF COLYER, M.D.

SHARI FEIST ALBRECHT, CHAIR | JAY SCOTT EMLER, COMMISSIONER | DWIGHT D. KEEN, COMMISSIONER

July 03, 2018

Kent Strube
Hartman Oil Co., Inc.
10500 E BERKELEY SQ PKWY STE 100
WICHITA, KS 67206

Re: Temporary Abandonment
API 15-055-10058-00-00
FINNUP B 5
SE/4 Sec.17-22S-33W
Finney County, Kansas

Dear Kent Strube:

"Your temporary abandonment (TA) application for the well listed above has been approved. In accordance with K.A.R. 82-3-111 the TA status of this well will expire 07/03/2019.

- * If you return this well to service or plug it, please notify the District Office.
- * If you sell this well you are required to file a Transfer of Operator form, T-1.
- * If the well will remain temporarily abandoned, you must submit a new TA application, CP-111, before 07/03/2019.

You may contact me at the number above if you have questions.

Very truly yours,

Kenny Sullivan"