

Marc A. Downing
Consulting Petroleum Geologist

Geologic Report
Drilling Time and Sample Log

Operator Double D's, LLC		Elevation 1966	
Lease Cecil	No. 1	KB DF GL	1956
API # 15-051-26908-0000		Casing Record Surface 8 5/8" @ 1141'	
Field Wildcat		Production 5 1/2" @ 3667	
Location 1096' FNL & 1818' FWL			
Sec. 30	Twp. 15s	Rge. 18w	Electrical Surveys
County Ellis State Kansas			CNDL / DIL MEL / Sonic
Formation	Sample tops	Log Tops	Datum
Top Anhydrite	1131	1132	+834
Base Anhydrite	1169	1169	+797
Topoka	2943	2941	-975
Heebner	3209	3208	-1242
Toronto	3228	3227	-1261
LKC	3254	3254	-1288
BKC	3497	3496	-1530
Gorham Sand	3557	3556	-1590
Arbuckle	3566	3566	-1600
Total Depth	3669	3668	-1702
Reference Well For Structural Comparison Aaron Oil - Bieker #1-25		980' FNL & 330' FEL Sec. 25-15s-19w	

Southwind Drilling, Rig #1
 Commenced **4-24-18** Completed
 Samples Saved From **2950** To **RTD**
 Drilling Time Kept From **2850** To **RTD**
 Samples Examined From **2950** To **RTD**
 Geological Supervision From **2950** To **RTD**

Summary and Recommendations

Due to structural position, DST Recovery, and log evaluation, it was decided to set 5 1/2" production casing for completion.

Perforations:
 Arbuckle: 3568-3572
 Gorham Sand: 3556-3560
 LKC "C": 3276-3283
 LKC "F": 3333-3335 (Before Abandonment)
 LKC "E": 3321-3327 (Before Abandonment)
 LKC "A": 3254-3257 (Before Abandonment)

Respectfully Submitted,
 Marc A. Downing

ROCK TYPES
 shale, gry
 Carbon Sh
 Dolprim
 Lmsst (vr>)

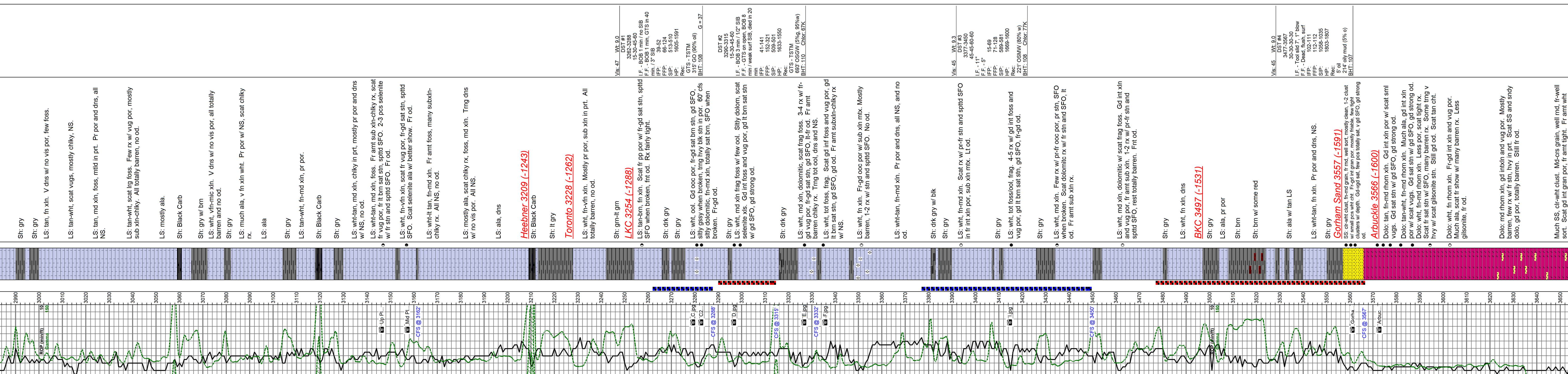
ACCESSORIES
 STRINGER
 Sandstone
 red shale
 carb shale

OTHER SYMBOLS
 DST
 DST Int
 DST alt
 Core
 Tail pipe

OIL SHOWS
 Even Stn
 Spotted Stn 50 - 75 %
 Spotted Stn 25 - 50 %
 Spotted Stn 10 - 25 %
 Oil Spill
 Dead Oil Stn
 Fluorescence

MISC
 Daily Report
 Digital Photo
 Document
 Folder
 Link
 Vertical Log File
 Horizontal Log File
 Core Log File
 Drill Cuttings Rpt

FOSSIL
 Oolite



Oil Shows
 Lithology
 DST
 Depth Intervals
 Curve Track #1
 ROP (min/ft)
 Gamma