

LITHOLOGY STRIP LOG

WellSight Systems

Scale 1:240 (5"=100') Imperial

Measured Depth Log

Well Name: THERON #1-17

Well Id:

Location: NWSESESW 17- 2S-37W Cheyenne County, Kansas

License Number: 15-023-21476

Region: Midcontinent

Spud Date: 1-3-2018

Drilling Completed: 2-13-2018

Surface Coordinates: 550' FSL & 2190' FWL

Bottom Hole

Coordinates:

Ground Elevation (ft): 3405

K.B. Elevation (ft): 3413

Logged Interval (ft): 3500

To: 5050

Total Depth (ft): 5050

Formation: LKC,Pawnee, Fort Scott & Cherokee

Type of Drilling Fluid: WBM

Printed by WellSight Log Viewer from WellSight Systems 1-800-447-1534 www.WellSight.com

OPERATOR

Company: Berexco, LLC.

Address: 2020 N. Bramblewood

Wichita, Kansas 67206

GEOLOGIST

Name: William B. Bynog

Company:

Address: P.O.Box 687

Pinecliffe, Co. 80471

Survey's

DEPTH	ANGLE
3473'	3/4
4430'	3/4

DSTs

DST#1 4290-4380, DST#2 4355-4430, DST#3 4430-4490, DST#4 4470-4560, DST#5 4725-4800, DST#6 4814-60

Comments

SET PRODUCTION PIPE, RIG TOTAL DEPTH 2' DEEPER THAN LOG DEPTH

ROCK TYPES

- Anhy
- Bent
- Brec
- Cht
- Clyst

- Coal
- Congl
- Dol
- Gyp
- Igne

- Lmst
- Meta
- Mrlst
- Salt
- Shale

- Shcol
- Shgy
- Sltst
- Ss
- Till

ACCESSORIES

- #### MINERAL
- Anhy
 - Arggrn
 - Arg
 - Bent
 - Bit
 - Brecfrag
 - Calc
 - Carb
 - Chtdk
 - Chtlt
 - Dol
 - Feldspar
 - Ferrpel
 - Ferr
 - Glau
 - Gyp
 - Hvymn
 - Kaol
 - Marl

- Minxl
- Nodule
- Phos
- Pyr
- Salt
- Sandy
- Silt
- Sil
- Sulphur
- Tuff

- #### FOSIL
- Algae
 - Amph
 - Belm
 - Bioclst
 - Brach
 - Bryozoa
 - Cephal
 - Coral

- Crin
- Echin
- Fish
- Foram
- Fossil
- Gastro
- Oolite
- Ostra
- Pelec
- Pellet
- Pisolite
- Plant
- Strom

- #### STRINGER
- Anhy
 - Arg
 - Bent
 - Coal
 - Dol

- Gyp
- Ls
- Mrst
- Sltstrg
- Ssstrg

- #### TEXTURE
- Boundst
 - Chalky
 - Cryxln
 - Earthy
 - Finexln
 - Grainst
 - Lithogr
 - Microxln
 - Mudst
 - Packst
 - Wackst

OTHER SYMBOLS

- #### POROSITY
- Earthy
 - Fenest
 - Fracture
 - Inter
 - Moldic
 - Organic
 - Pinpoint
 - Vuggy

- #### SORTING
- Well
 - Moderate
 - Poor

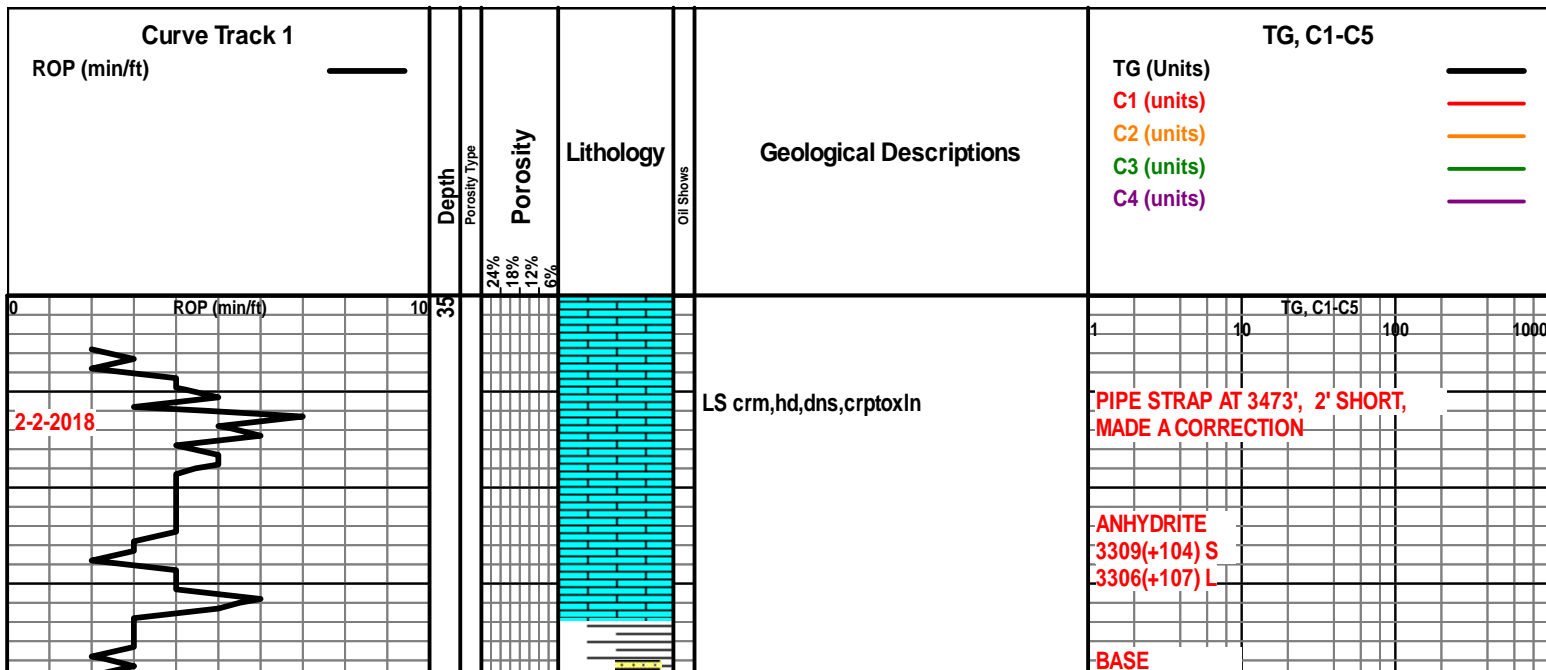
- #### ROUNDING
- Rounded
 - Subrnd
 - Subang

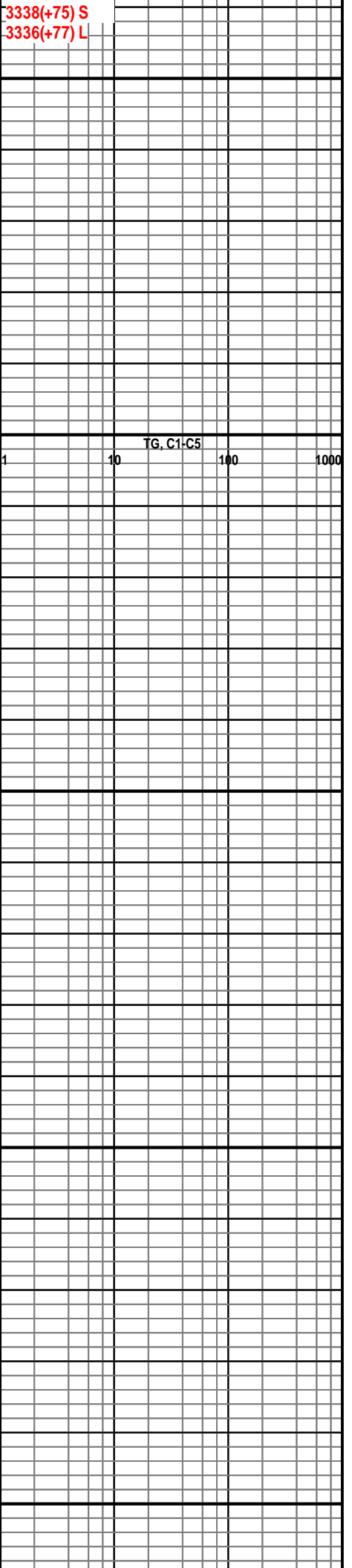
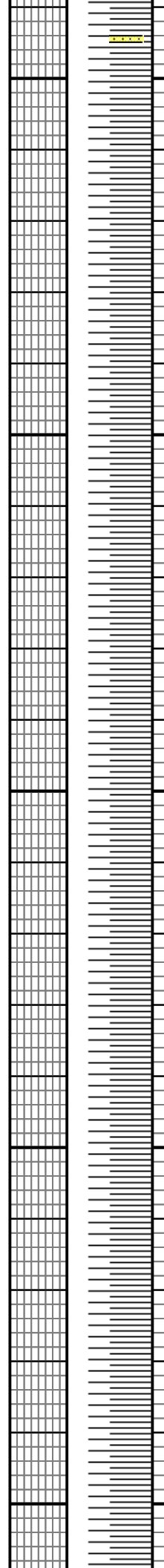
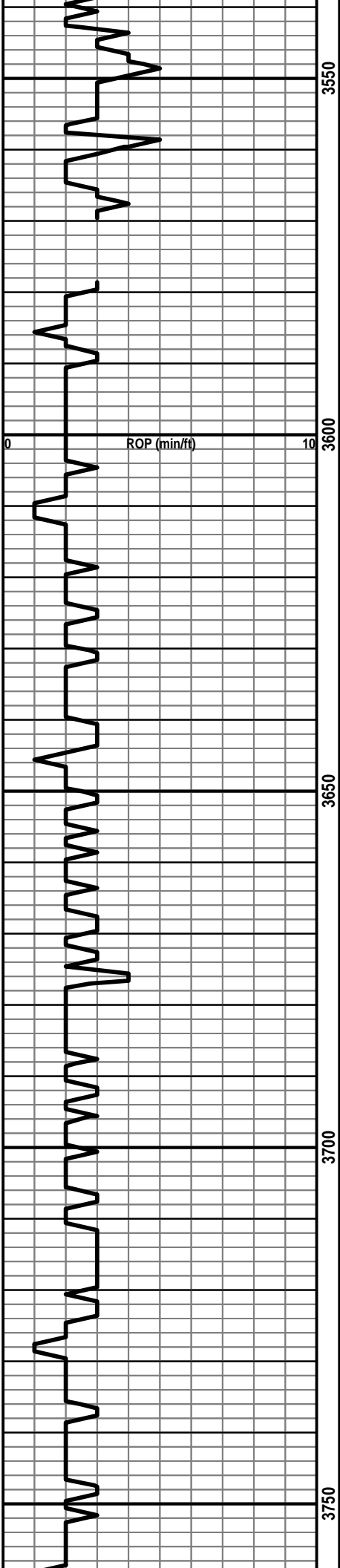
- Angular

- #### OIL SHOW
- Even
 - Spotted
 - Ques
 - Dead

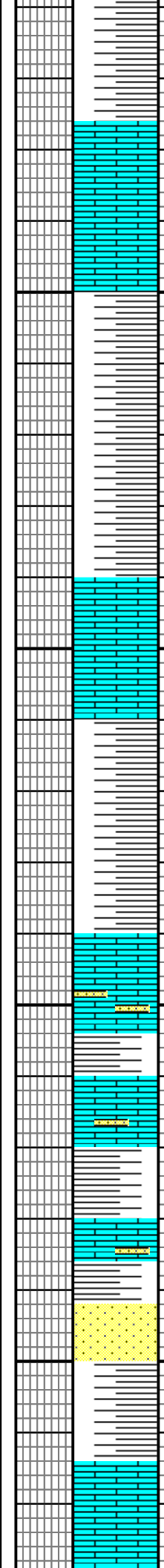
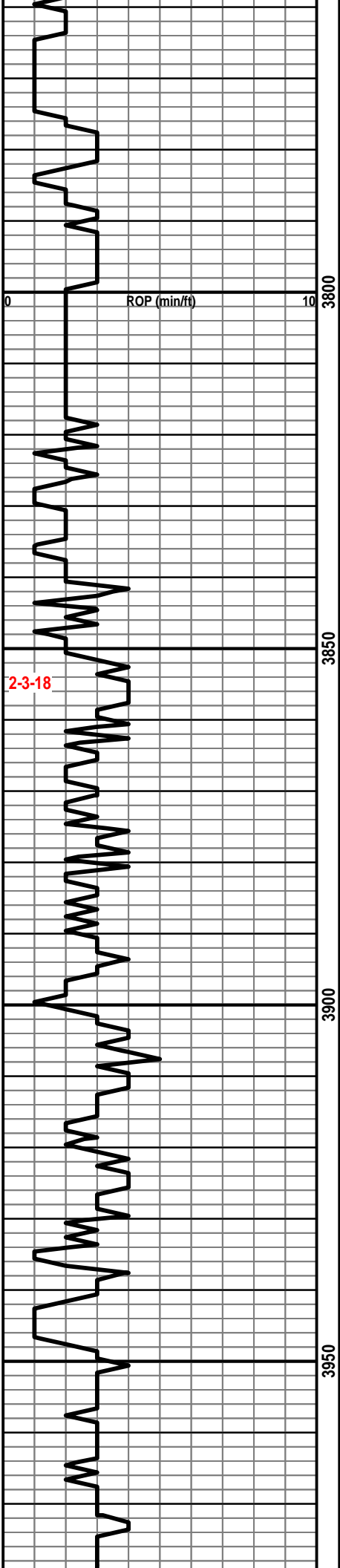
- #### INTERVAL
- Dst
 - Dst

- #### EVENT
- Rft
 - Sidewall





3338(+75) S
3336(+77) L



LS crm-pale gy,hd,blky, chky ip,p vis por,ns

SH aa

LS crm,hd,crptoxln,sl foss, p por,ns

LS wh,frm,chky

SH red,sft,v arg

LS crm,hd,chky ip bcmg sdy at base

LS pale gy,frm,chky,sdy ip,p por,ns with thin SH gy,frm

SS crm,frm,vfg,p por,calc,ns

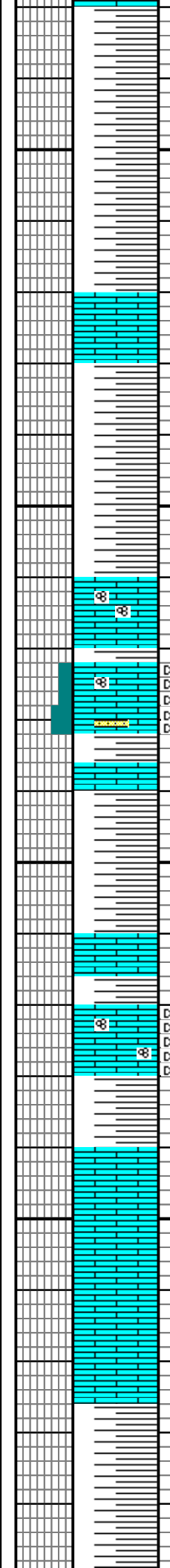
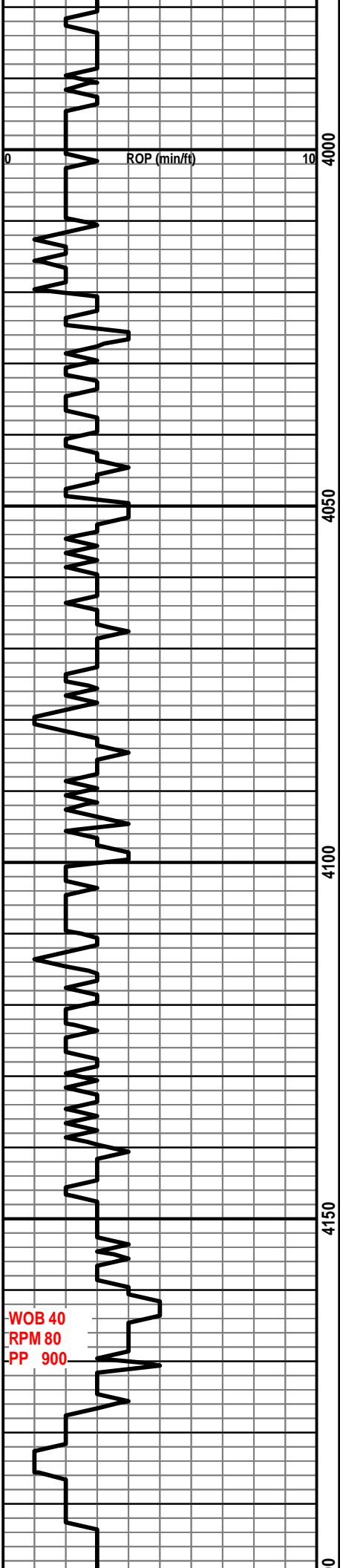
SH red,sft,v arg

LS pale gy,hd,foss,chky ip,p por,ns

TG, C1-C5

FORAKER
3890(-477) S
3882(-469) L

MUD DATA 3891'
WT 8.9 VIS 68 FL 7.2
PH 11.5 CK 2 CL 800
LCM 2.0



SH aa

LS pale gy,v hd,dns,blk,ns

SH red,v sft,v arg

LS wh,pale gy,frm,foss, chky ip,p vis por,ns

LS pale gy,frm,foss,chky ip, bcmg v sdy at base,p por,spty blk dd stn,nfo

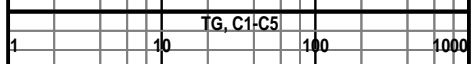
SH aa

LS crm,v hd,crptoxln,chky ip, p vis por,ns

LS crm,frm,chky,foss,ool, p por,v spty blk dd stn,nfo with thin SH aa

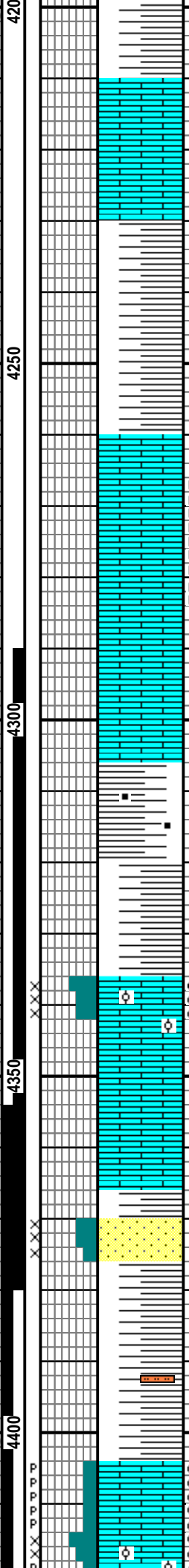
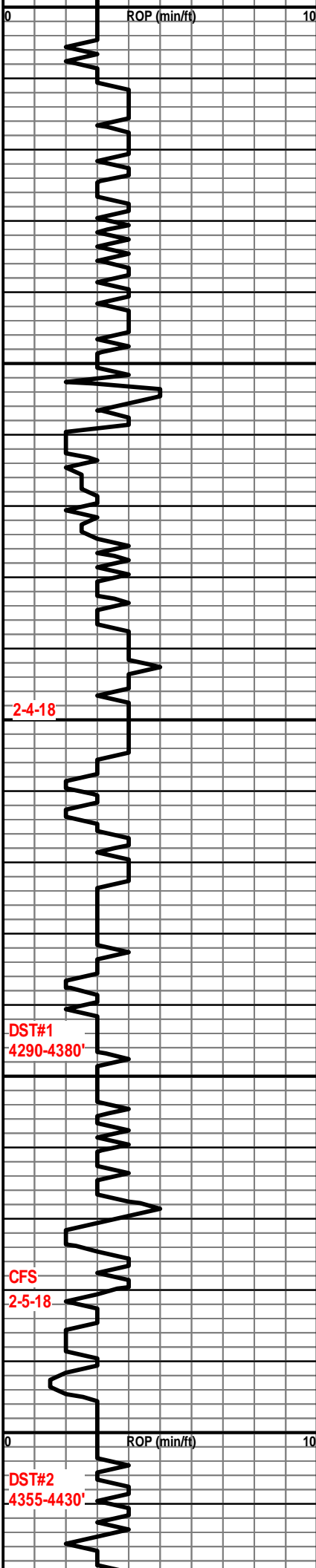
LS wh-crm,frm,chky-sb chky,p vis por,ns

SH red,v sft,v arg



TOPEKA
4110(-697) S
4118(-705) L

WOB 40
RPM 80
PP 900



LS wh-crm,frm,sub chky- chky,p vis por,ns

SH gy gn,red,sft,arg

LS pale gy,frm,chky ip,arg

LS pale gy,v hd,dns,crptoxln,p por,v spty blk dd stn

LS aa pale gy,v hd,dns,blk,ns

SH gy,gy blk,frm,fiss,sl carb

SH red,v sft,v arg

GRAINSTONE crm,frm, oolitic,fr intg por,spty-even live blk stn,v g cut,g show free oil

LS crm-pale gy, v hd,v dns, crptoxln,ns

SH red,sft,v arg

SS trnsl,fri,vfg,wsrtd,p intg por,ns

SH red,frm,sity ip

LS wh-crm,sl hd,sbchky-chky,p pp vuggy por with v spty lt stn,p cut,nfo

GRAINSTONE crm,hd,sbchky,sl foss,ool,p pp por,rare fr intg oolitic por,

TG, C1-C5

1 10 100 1000

OREAD
4260(-847) S
4260(-847) L

MUD DATA 4321'
WT 9.2 VIS 59 FL 6.4
PH 11.5 CK 2 CL 800
LCM 2

LANSING A
4336(-923) S
4334(-921) L

DST#1 4290-4380' 30-60-60-90 min.
IH 2166 IF 79-84 (NB) ISI 1123 FF 84-91 FSI 1145 FH 2166
REC 150' MUD WITH OIL SPTS (HIT BRIDGE & TOOL OPENED 6' OFF BOTTOM, LOST 15' MUD)

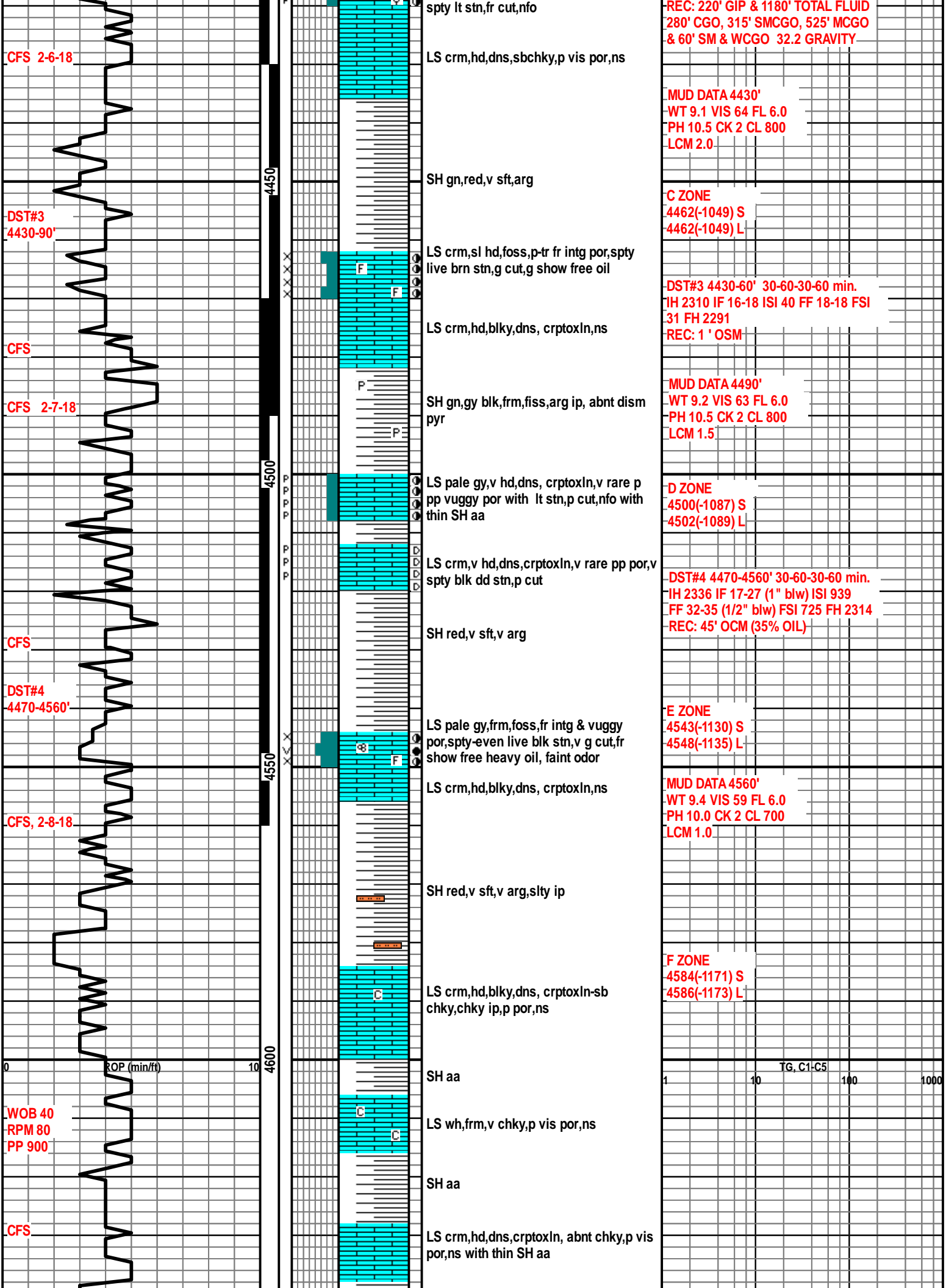
MUD DATA 4380'
WT 9.2 VIS 64 FL 6.4
PH 10.5 CK 2 CL 600
LCM 2.0

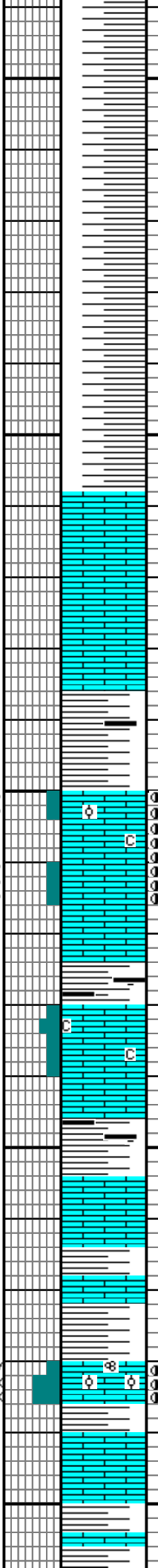
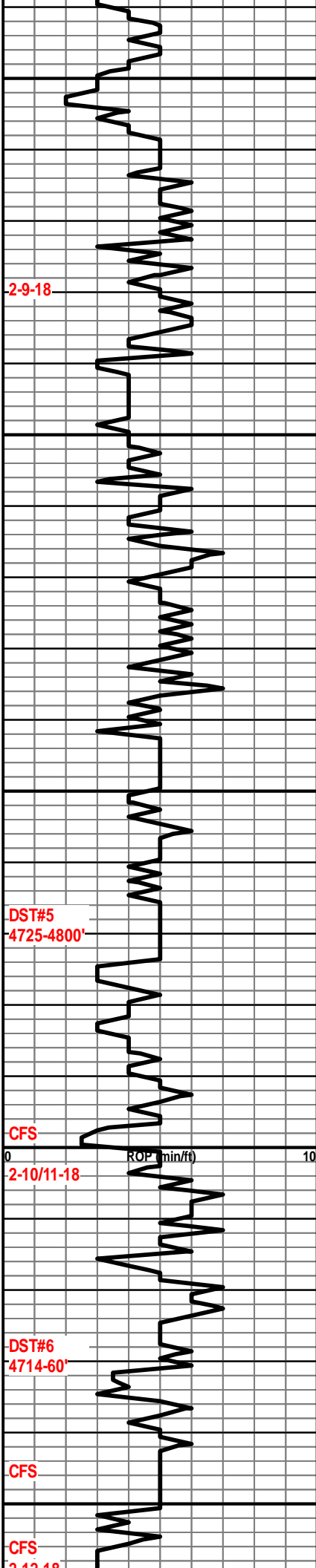
B ZONE
4404(-991) S
3998(-986) L

TG, C1-C5

1 10 100 1000

DST#2 4355-4430' 30-60-90-120 min.
IH 2284 IF 26-235 (BOB 9 M) ISI 1316 (2.5" BB) FF 253-435 (BOB 12 M) FSI 1248 (3.5" BB) FH 2226





SH dk red,red brn,v sft,v arg,gummy

2-9-18

MUD DATA 4708'
WT 9.1 VIS 64 FL 6.8
PH 11.0 CK 2 CL 700
LCM 2.0

LS pale gy,hd,v arg,chky ip,p por,ns

PAWNEE
4707(-1294) S
4704(-1291) L

SH gy,gn,gy blk,frm,fiss,sl carb

FT SCOTT
4750(-1337) S
4746(-1333) L

LS wh-crm,frm,chky, oolitic,v pp intg por,v spty live brn stn,g cut,nfo

DST#5
4725-4800'

DST#5 4725-4800 30-60-30-615 min.
IH 2458 IF 17-20 ISI 421 FF 20-22
FSI 1381(rig repair) FH 2431
REC: 5' MUD, TR OIL

LS crm,hd,blky,v fnly microIn,chky ip,p por,v rare lt brn stn,p cut

LS crm,v hd,dns,crptoxIn, ns

SH dk gy blk,blk,frm,fiss, carb

LS wh-crm,frm,chky,p vis por,ns

LS crm,v hd,dns,crptoxIn, blky,chky ip,ns

CFS

2-10/11-18

MUD DATA 4819'
WT 9.3 VIS 52 FL 7.2
PH 10.0 CK 2 CL 600
LCM 2.0

SH dk gy blk,blk,frm,fiss,carb

LS pale gy,hd,dns,crptoxIn, p por,ns with thin SH aa

CHEROKEE
4822(-1409) S
4816(-1403) L

SH gy,gy gn,frm,fiss

DST#6
4714-60'

DST#6 4814-60' 30-60-90-120 min.
IH 2555 IF 19-57 (8" blw) ISI 1338
(wk surf. blw) FF 65-168 (5.25" blw)
FSI 1324 (wk surf. blw) FH 2466
REC: 310' GIP, 350' CGO & 50' OCM

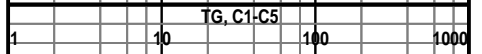
GRAINSTONE off wh,frm,sl oolitic,foss, gran tex,fr intg-vuggy por, spty live brn stn,g cut,fr show free oil,g odor with thin SH aa

LS crm,v hd,dns,crptoxIn, ns

CFS

CFS
2-12-18

SH red,gn,sft,arg with thin LS aa dns,ns



2-12-18

AFTER TEST RAN IN WITH PDC BIT TO MAKE BETTER HOLE

2-13-18

ROP (min/ft)

0

10

5000

5050

4900

4950

5000

5050

5100

5150

5200

5250

5300

5350

5400

5450

5500

5550

5600

5650

5700

5750

5800

5850

5900

5950

6000

6050

6100

6150

6200

6250

6300

6350

6400

6450

6500

6550

6600

6650

6700

6750

6800

6850

6900

6950

7000

7050

7100

7150

7200

7250

7300

7350

7400

7450

7500

7550

7600

7650

7700

7750

7800

7850

7900

7950

8000

8050

8100

8150

8200

8250

8300

8350

8400

8450

8500

8550

8600

8650

8700

8750

8800

8850

8900

8950

9000

9050

9100

9150

9200

9250

9300

9350

9400

9450

9500

9550

9600

9650

9700

9750

9800

9850

9900

9950

10000



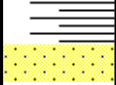
SH red,sft,v arg



SS trnsl,fri,f-c gr,p srted, sb ang-rnd,fr por,sileous cmt,abnt uncons,ns



SH dk red brn,frm,fiss with thin stringers SS aa



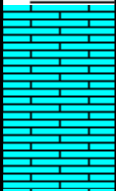
SH & SS aa,ns



SS wh,fri,f-c gr,sb ang-rnd, p srted,cly filled,p por,ns with SH aa



LS off wh-pale gy,frm,blk,y,chk,y ip,p por,ns



RTD 5050'
LTD 5048'

MUD DATA 4860'
WT 9.4 VIS 58 FL 6.8
PH 10.0 CK 2 CL 600
LCM 2.0

TG, C1-C5

1

10

100

1000

MISS.
5030(-1617) S
5024(-1611) L

00