



TRILOBITE TESTING, INC.

DRILL STEM TEST REPORT

Berexco, LLC

4/2s/37w Cheyenne KS

2020 N. Bramblewood
Wichita, KS 67206

McFee #1-4

Job Ticket: 63444

DST#: 1

ATTN: Bryan Bynog

Test Start: 2018.01.10 @ 07:45:00

GENERAL INFORMATION:

Formation: **LKC "B"**

Deviated: No Whipstock: ft (KB)

Time Tool Opened: 10:27:00

Time Test Ended: 20:03:00

Test Type: Conventional Bottom Hole (Initial)

Tester: James Winder

Unit No: 83

Interval: **4230.00 ft (KB) To 4310.00 ft (KB) (TVD)**

Total Depth: 4310.00 ft (KB) (TVD)

Hole Diameter: 7.88 inches Hole Condition: Fair

Reference Elevations: 3273.00 ft (KB)

3266.00 ft (CF)

KB to GR/CF: 7.00 ft

Serial #: 8017 Outside

Press@RunDepth: 119.74 psig @ 4231.00 ft (KB)

Start Date: 2018.01.10

End Date: 2018.01.10

Start Time: 07:45:05

End Time: 20:03:00

Capacity: 8000.00 psig

Last Calib.: 2018.01.10

Time On Btm: 2018.01.10 @ 10:26:45

Time Off Btm: 2018.01.10 @ 15:33:15

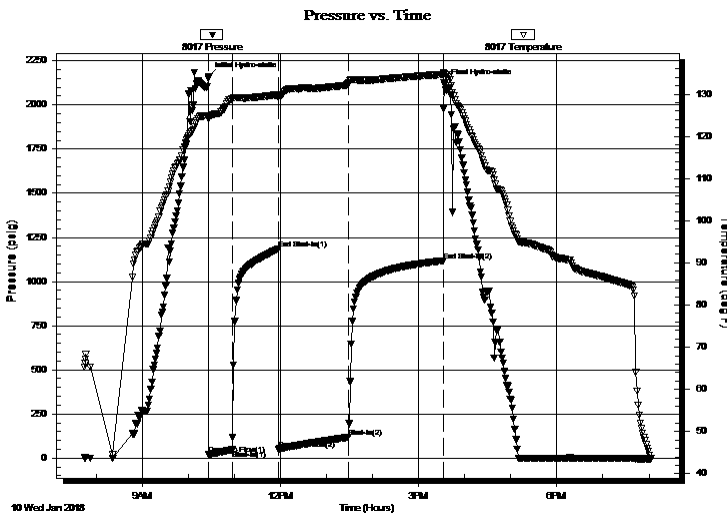
TEST COMMENT: 30 - IF: Blow built to 2 1/2"

60 - IS: No blow back

90 - FF: Blow built to 4"

120 - FS: No blow back

PRESSURE SUMMARY



Time (Min.)	Pressure (psig)	Temp (deg F)	Annotation
0	2157.84	124.94	Initial Hydro-static
1	20.41	124.15	Open To Flow (1)
31	46.74	128.88	Shut-In(1)
91	1185.74	129.83	End Shut-In(1)
91	51.00	129.21	Open To Flow (2)
182	119.74	132.48	Shut-In(2)
305	1117.52	134.64	End Shut-In(2)
307	2122.95	134.81	Final Hydro-static

Recovery

Length (ft)	Description	Volume (bbl)
116.00	WM w/trace oil 57% _m , 43% _w	0.57
87.00	Mud w/oil spots 99% _m , 1% _o	0.43

Gas Rates

	Choke (inches)	Pressure (psig)	Gas Rate (Mcf/d)



TRILOBITE TESTING, INC.

DRILL STEM TEST REPORT

Berexco, LLC

4/2s/37w Cheyenne KS

2020 N. Bramblewood
Wichita, KS 67206

McFee #1-4

Job Ticket: 63444

DST#: 1

ATTN: Bryan Bynog

Test Start: 2018.01.10 @ 07:45:00

GENERAL INFORMATION:

Formation: **LKC "B"**

Deviated: No Whipstock: ft (KB)

Time Tool Opened: 10:27:00

Time Test Ended: 20:03:00

Test Type: Conventional Bottom Hole (Initial)

Tester: James Winder

Unit No: 83

Interval: **4230.00 ft (KB) To 4310.00 ft (KB) (TVD)**

Total Depth: 4310.00 ft (KB) (TVD)

Hole Diameter: 7.88 inches Hole Condition: Fair

Reference Elevations: 3273.00 ft (KB)

3266.00 ft (CF)

KB to GR/CF: 7.00 ft

Serial #: 6625 Inside

Press@RunDepth: psig @ 4231.00 ft (KB)

Start Date: 2018.01.10

End Date:

2018.01.10

Start Time: 07:45:05

End Time:

20:03:30

Capacity: 8000.00 psig

Last Calib.: 2018.01.10

Time On Btm:

Time Off Btm:

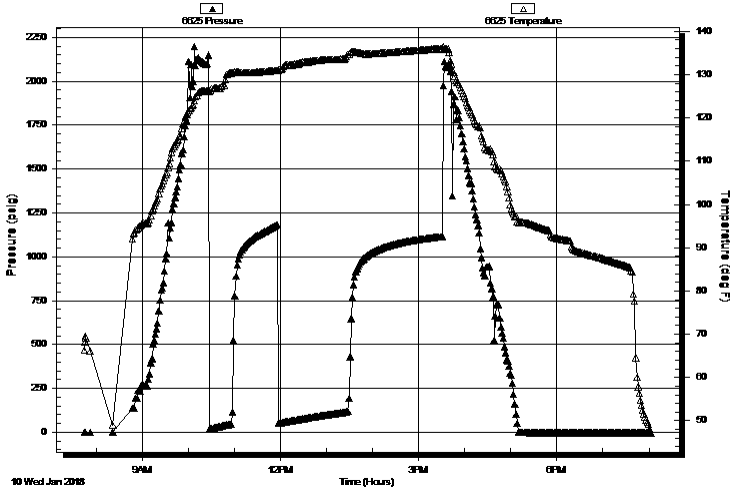
TEST COMMENT: 30 - IF: Blow built to 2 1/2"

60 - IS: No blow back

90 - FF: Blow built to 4"

120 - FS: No blow back

Pressure vs. Time



PRESSURE SUMMARY

Time (Min.)	Pressure (psig)	Temp (deg F)	Annotation

Recovery

Length (ft)	Description	Volume (bbl)
116.00	WM w/trace oil 57% m, 43% w	0.57
87.00	Mud w/oil spots 99% m, 1% o	0.43

Gas Rates

Choke (inches)	Pressure (psig)	Gas Rate (Mcf/d)



**TRILOBITE
TESTING, INC.**

DRILL STEM TEST REPORT

FLUID SUMMARY

Berexco, LLC

4/2s/37w Cheyenne KS

2020 N. Bramblewood
Wichita, KS 67206

McFee #1-4

Job Ticket: 63444

DST#: 1

ATTN: Bryan Bynog

Test Start: 2018.01.10 @ 07:45:00

Mud and Cushion Information

Mud Type: Gel Chem

Cushion Type:

Oil API:

deg API

Mud Weight: 9.00 lb/gal

Cushion Length:

ft

Water Salinity:

24000 ppm

Viscosity: 58.00 sec/qt

Cushion Volume:

bbbl

Water Loss: 6.80 in³

Gas Cushion Type:

Resistivity: ohm.m

Gas Cushion Pressure:

psig

Salinity: 900.00 ppm

Filter Cake: 2.00 inches

Recovery Information

Recovery Table

Length ft	Description	Volume bbbl
116.00	WM w /trace oil 57% _m , 43% _w	0.570
87.00	Mud w /oil spots 99% _m , 1% _o	0.428

Total Length: 203.00 ft Total Volume: 0.998 bbl

Num Fluid Samples: 0

Num Gas Bombs: 0

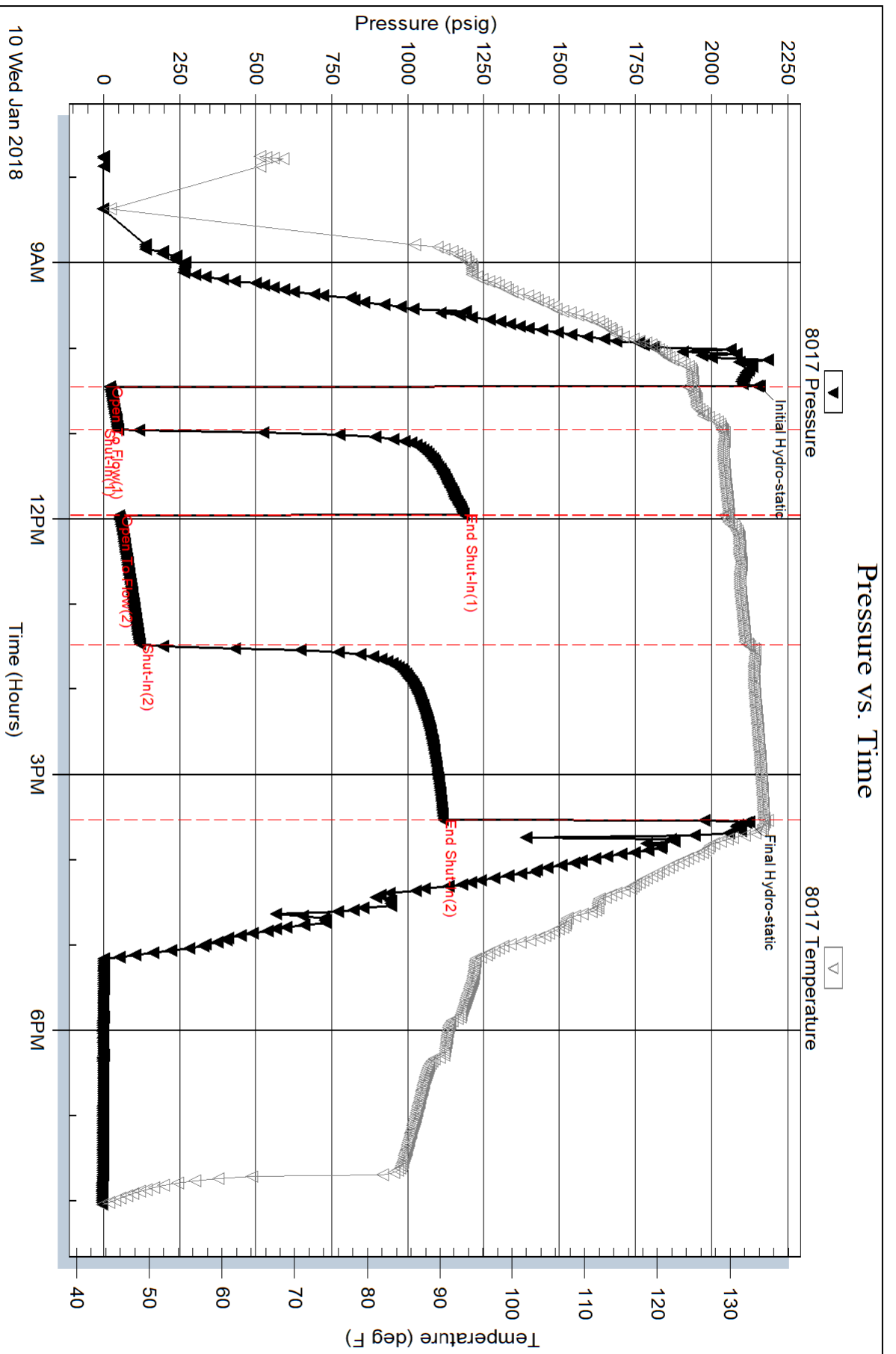
Serial #:

Laboratory Name:

Laboratory Location:

Recovery Comments: RW = .365 ohms @ 55.5 deg F

Chlorides = 24,000 ppm



Serial #: 6625

Inside

Berexco, LLC

McFee #1-4

DST Test Number: 1

