



**TRILOBITE
TESTING, INC.**

DRILL STEM TEST REPORT

Berexco, LLC
2020 N. Bramblewood
Wichita, KS 67206
ATTN: Bryan Bynog

4/2s/37w Cheyenne KS

McFee #1-4

Job Ticket: 63446

DST#: 3

Test Start: 2018.01.14 @ 16:20:00

GENERAL INFORMATION:

Formation: **Ft. Scott - Upper Ch**

Deviated: No Whipstock: ft (KB)

Time Tool Opened: 19:46:15

Time Test Ended: 05:08:00

Test Type: Conventional Bottom Hole (Reset)

Tester: James Winder

Unit No: 83

Interval: **4640.00 ft (KB) To 4780.00 ft (KB) (TVD)**

Reference Elevations: 3273.00 ft (KB)

Total Depth: 4780.00 ft (KB) (TVD)

3266.00 ft (CF)

Hole Diameter: 7.88 inches Hole Condition: Fair

KB to GR/CF: 7.00 ft

Serial #: 8017

Outside

Press@RunDepth: 230.63 psig @ 4641.00 ft (KB)

Capacity: 8000.00 psig

Start Date: 2018.01.14

End Date:

2018.01.15

Last Calib.:

2018.01.15

Start Time:

16:20:05

End Time:

05:08:00

Time On Btm:

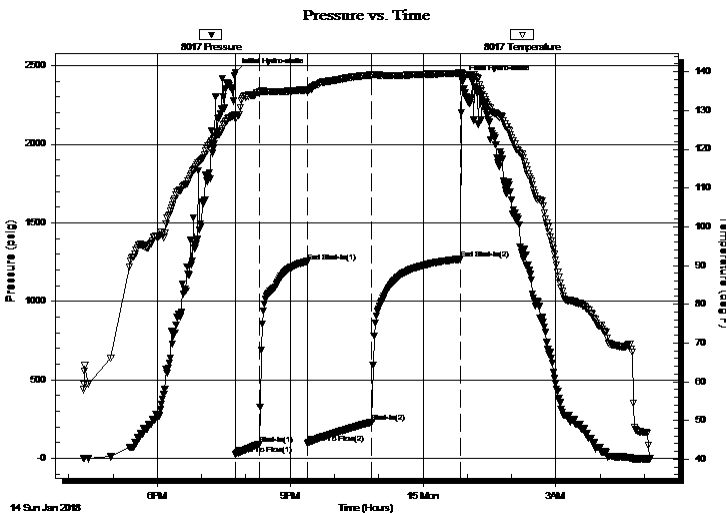
2018.01.14 @ 19:46:00

Time Off Btm:

2018.01.15 @ 00:53:30

TEST COMMENT: 30 - IF: Blow built to 5 1/2" (Diesel in bucket)
60 - IS: No blow back
90 - FF: Blow started at 14 min., built to 7"
120 - FS: No blow back

PRESSURE SUMMARY



| Time (Min.) | Pressure (psig) | Temp (deg F) | Annotation |
|-------------|-----------------|--------------|----------------------|
| 0 | 2456.80 | 128.81 | Initial Hydro-static |
| 1 | 26.69 | 127.87 | Open To Flow (1) |
| 33 | 91.25 | 134.64 | Shut-In(1) |
| 97 | 1253.89 | 135.37 | End Shut-In(1) |
| 98 | 94.70 | 134.76 | Open To Flow (2) |
| 185 | 230.63 | 139.19 | Shut-In(2) |
| 305 | 1268.77 | 139.65 | End Shut-In(2) |
| 308 | 2409.15 | 139.36 | Final Hydro-static |

Recovery

| Length (ft) | Description | Volume (bbl) |
|-------------|---|--------------|
| 230.00 | WCM 63% _m , 37% _w | 1.13 |
| 190.00 | Mud 100% | 0.93 |
| | | |
| | | |
| | | |

Gas Rates

| | Choke (inches) | Pressure (psig) | Gas Rate (Mcf/d) |
|--|----------------|-----------------|------------------|
| | | | |

* Recovery from multiple tests



TRILOBITE TESTING, INC.

DRILL STEM TEST REPORT

Berexco, LLC
 2020 N. Bramblewood
 Wichita, KS 67206
 ATTN: Bryan Bynog

4/2s/37w Cheyenne KS

McFee #1-4

Job Ticket: 63446

DST#: 3

Test Start: 2018.01.14 @ 16:20:00

GENERAL INFORMATION:

Formation: **Ft. Scott - Upper Ch**

Deviated: No Whipstock: ft (KB)

Time Tool Opened: 19:46:15

Time Test Ended: 05:08:00

Test Type: Conventional Bottom Hole (Reset)

Tester: James Winder

Unit No: 83

Interval: 4640.00 ft (KB) To 4780.00 ft (KB) (TVD)

Total Depth: 4780.00 ft (KB) (TVD)

Hole Diameter: 7.88 inches Hole Condition: Fair

Reference Elevations: 3273.00 ft (KB)

3266.00 ft (CF)

KB to GR/CF: 7.00 ft

Serial #: 6625 Inside

Press@RunDepth: psig @ 4641.00 ft (KB)

Start Date: 2018.01.14

End Date: 2018.01.15

Capacity: 8000.00 psig

Last Calib.: 2018.01.15

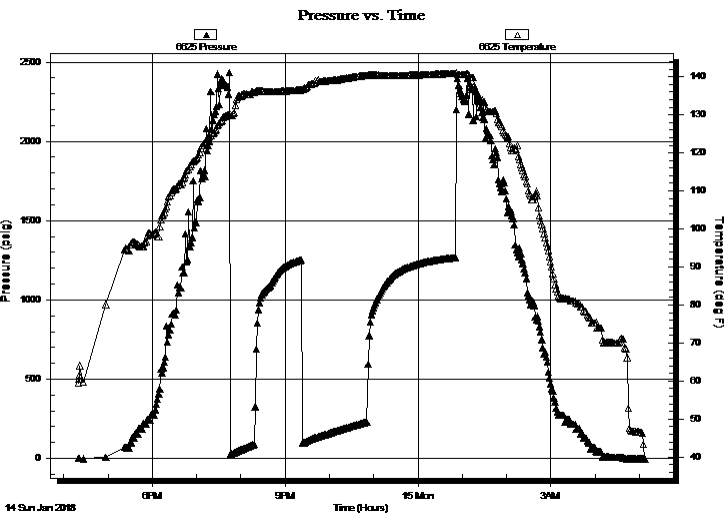
Start Time: 16:20:05

End Time: 05:08:30

Time On Btm:

Time Off Btm:

TEST COMMENT: 30 - IF: Blow built to 5 1/2" (Diesel in bucket)
 60 - IS: No blow back
 90 - FF: Blow started at 14 min., built to 7"
 120 - FS: No blow back



PRESSURE SUMMARY

| Time (Min.) | Pressure (psig) | Temp (deg F) | Annotation |
|-------------|-----------------|--------------|------------|
| | | | |
| | | | |
| | | | |
| | | | |
| | | | |

Recovery

| Length (ft) | Description | Volume (bbl) |
|-------------|----------------|--------------|
| 230.00 | WCM 63%w, 37%w | 1.13 |
| 190.00 | Mud 100% | 0.93 |
| | | |
| | | |
| | | |

* Recovery from multiple tests

Gas Rates

| Choke (inches) | Pressure (psig) | Gas Rate (Mcf/d) |
|----------------|-----------------|------------------|
| | | |



**TRILOBITE
TESTING, INC.**

DRILL STEM TEST REPORT

FLUID SUMMARY

Berexco, LLC

4/2s/37w Cheyenne KS

2020 N. Bramblewood
Wichita, KS 67206

McFee #1-4

Job Ticket: 63446

DST#: 3

ATTN: Bryan Bynog

Test Start: 2018.01.14 @ 16:20:00

Mud and Cushion Information

Mud Type: Gel Chem

Cushion Type:

Oil API:

deg API

Mud Weight: 9.00 lb/gal

Cushion Length:

ft

Water Salinity:

19000 ppm

Viscosity: 63.00 sec/qt

Cushion Volume:

bbbl

Water Loss: 7.98 in³

Gas Cushion Type:

Resistivity: ohm.m

Gas Cushion Pressure:

psig

Salinity: 900.00 ppm

Filter Cake: 2.00 inches

Recovery Information

Recovery Table

| Length ft | Description | Volume bbl |
|--------------|---|---------------|
| 230.00 | WCM 63% _m , 37% _w | 1.131 |
| 190.00 | Mud 100% | 0.934 |

Total Length: 420.00 ft Total Volume: 2.065 bbl

Num Fluid Samples: 0

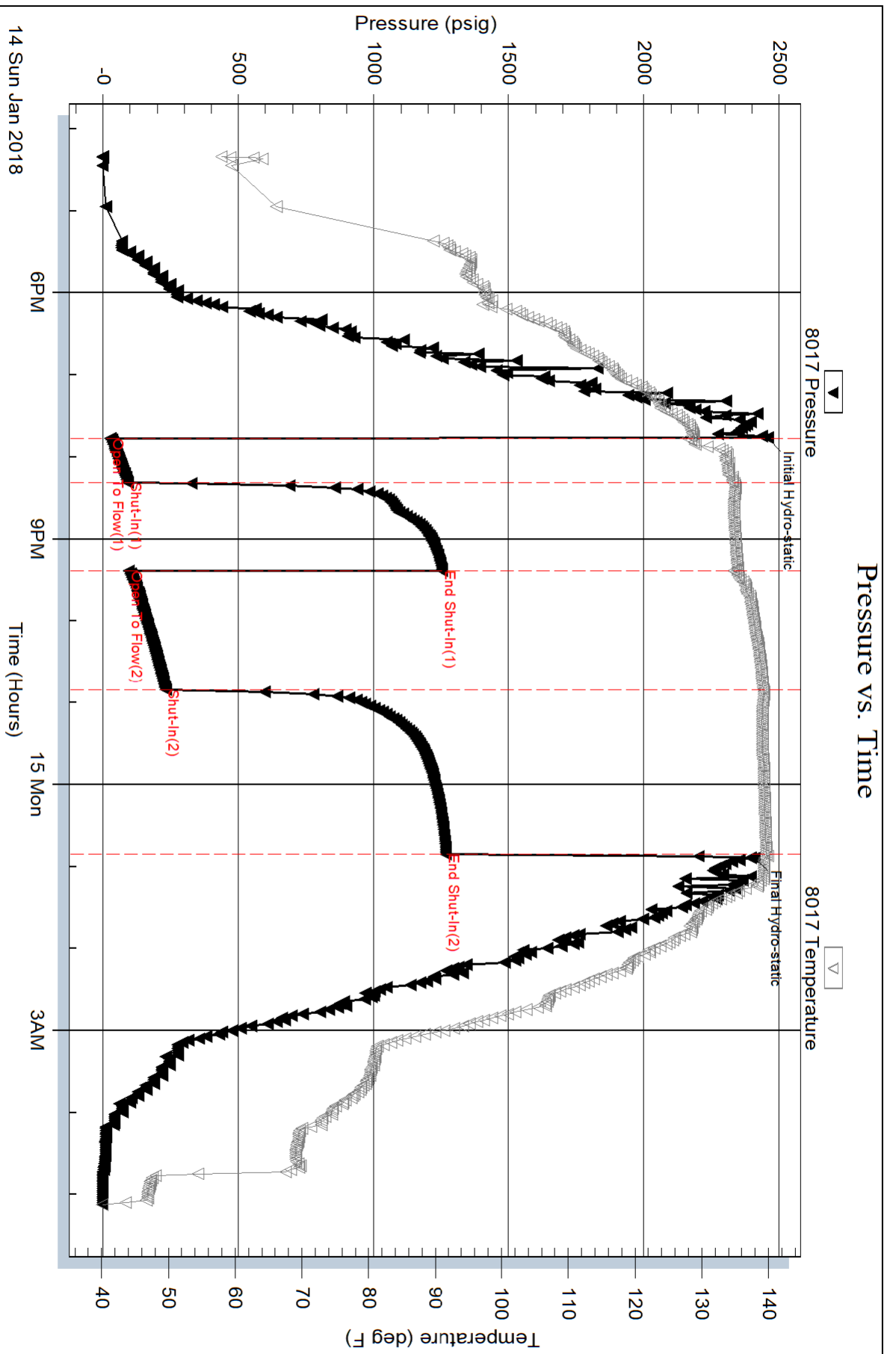
Num Gas Bombs: 0

Serial #:

Laboratory Name:

Laboratory Location:

Recovery Comments: RW = .425 ohms @ 58 deg F Chlorides = 19,000 ppm



Serial #: 6625

Inside

Berexco, LLC

McFee #1-4

DST Test Number: 3

