

LITHOLOGY STRIP LOG

WellSight Systems

Scale 1:240 (5"=100') Imperial

Measured Depth Log

Well Name: McFee #1-4

Well Id:

Location: W2E2 NW Section 4 2S-37W Cheyenne County, Kansas

License Number: 15-023-21470

Region: Midcontinent

Spud Date: 1-3-2018

Drilling Completed: 1-16-2018

Surface Coordinates: 1320' FNL & 1650' FWL

Bottom Hole

Coordinates:

Ground Elevation (ft): 3265

K.B. Elevation (ft): 3273

Logged Interval (ft): 3400

To: 4800

Total Depth (ft): 4800

Formation: LKC, Pawnee, Fort Scott & Cherokee

Type of Drilling Fluid: WBM

Printed by WellSight Log Viewer from WellSight Systems 1-800-447-1534 www.WellSight.com

OPERATOR

Company: Berexco, LLC.

Address: 2020 N. Bramblewood

Wichita, Kansas 67206

GEOLOGIST

Name: William B. Bynog

Company:

Address: P.O.Box 687

Pinecliffe, Co. 80471

Survey's


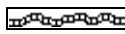
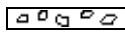


DSTs






DST#1 4230-4310', DST#2 4404-4440', DST#3 4640-4780', DST#4 4306-4396'



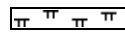
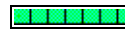
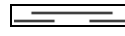
Comments

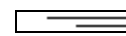
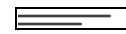



DRY HOLE

ROCK TYPES

 Anhy
 Bent
 Brec
 Cht
 Clyst

 Coal
 Congl
 Dol
 Gyp
 Igne

 Lmst
 Meta
 Mrlst
 Salt
 Shale

 Shcol
 Shgy
 Sltst
 Ss
 Till

ACCESSORIES

MINERAL

- Anhy
- Arggrn
- Arg
- Bent
- Bit
- Breclrag
- Calc
- Carb
- Chtdk
- Chtlt
- Dol
- Feldspar
- Ferrpel
- Ferr
- Glau
- Gyp
- Hvymin
- Kaol
- Marl

- Minxl
- Nodule
- Phos
- Pyr
- Salt
- Sandy
- Silt
- Sil
- Sulphur
- Tuff

FOSSIL

- Algae
- Amph
- Belm
- Bioclst
- Brach
- Bryozoa
- Cephal
- Coral

- Crin
- Echin
- Fish
- Foram
- Fossil
- Gastro
- Oolite
- Ostra
- Pelec
- Pellet
- Pisolite
- Plant
- Strom

STRINGER

- Anhy
- Arg
- Bent
- Coal
- Dol

- Gyp
- Ls
- Mrst
- Slststrg
- Ssstrg

TEXTURE

- Boundst
- Chalky
- Cryxln
- Earthy
- Finexln
- Grainst
- Lithogr
- Microxln
- Mudst
- Packst
- Wackest

OTHER SYMBOLS

POROSITY

- Earthy
- Fenest
- Fracture
- Inter
- Moldic
- Organic
- Pinpoint
- Vuggy

SORTING

- Well
- Moderate
- Poor

ROUNDING

- Rounded
- Subrnd
- Subang

- Angular

OIL SHOW

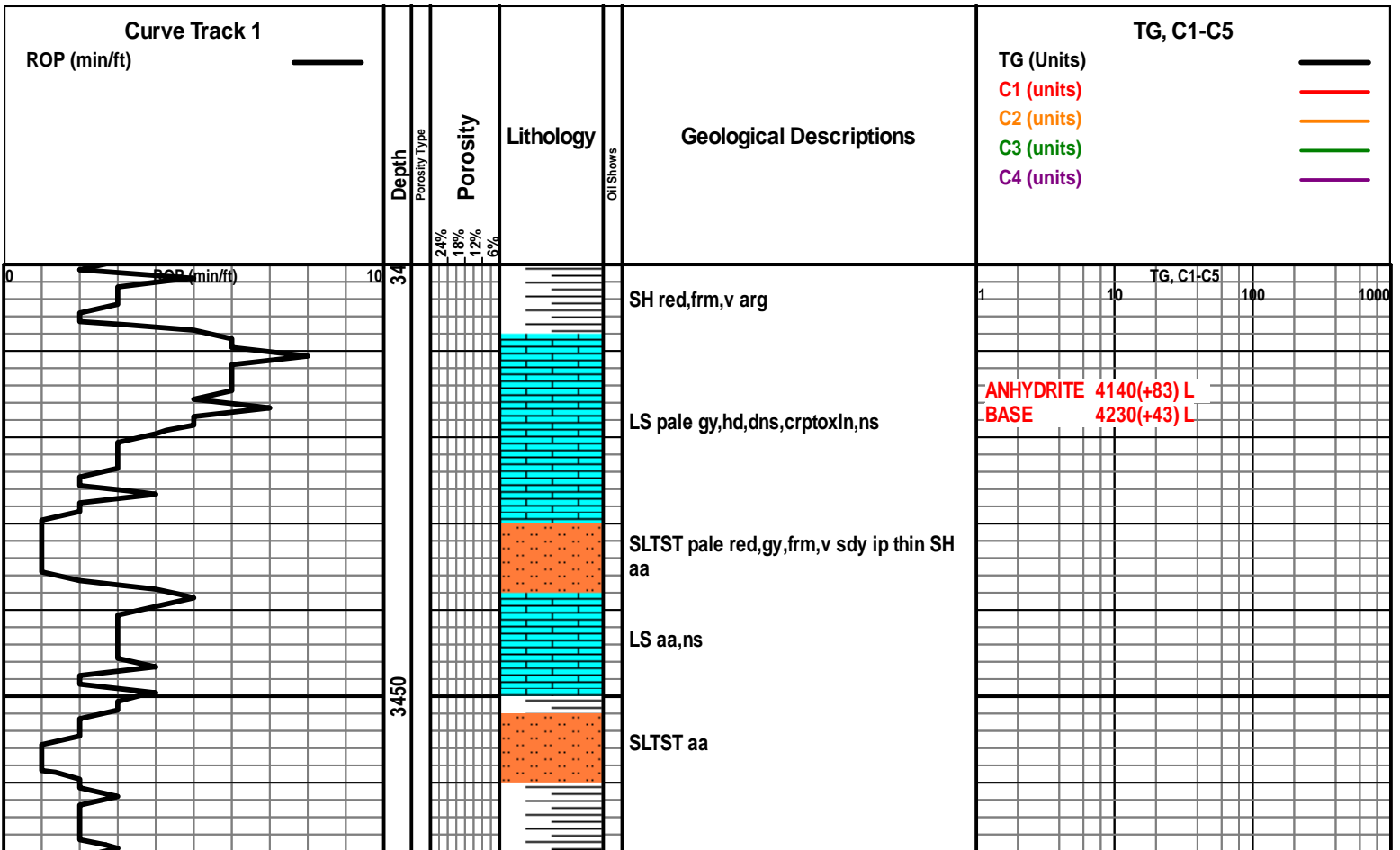
- Even
- Spotted
- Ques
- Dead

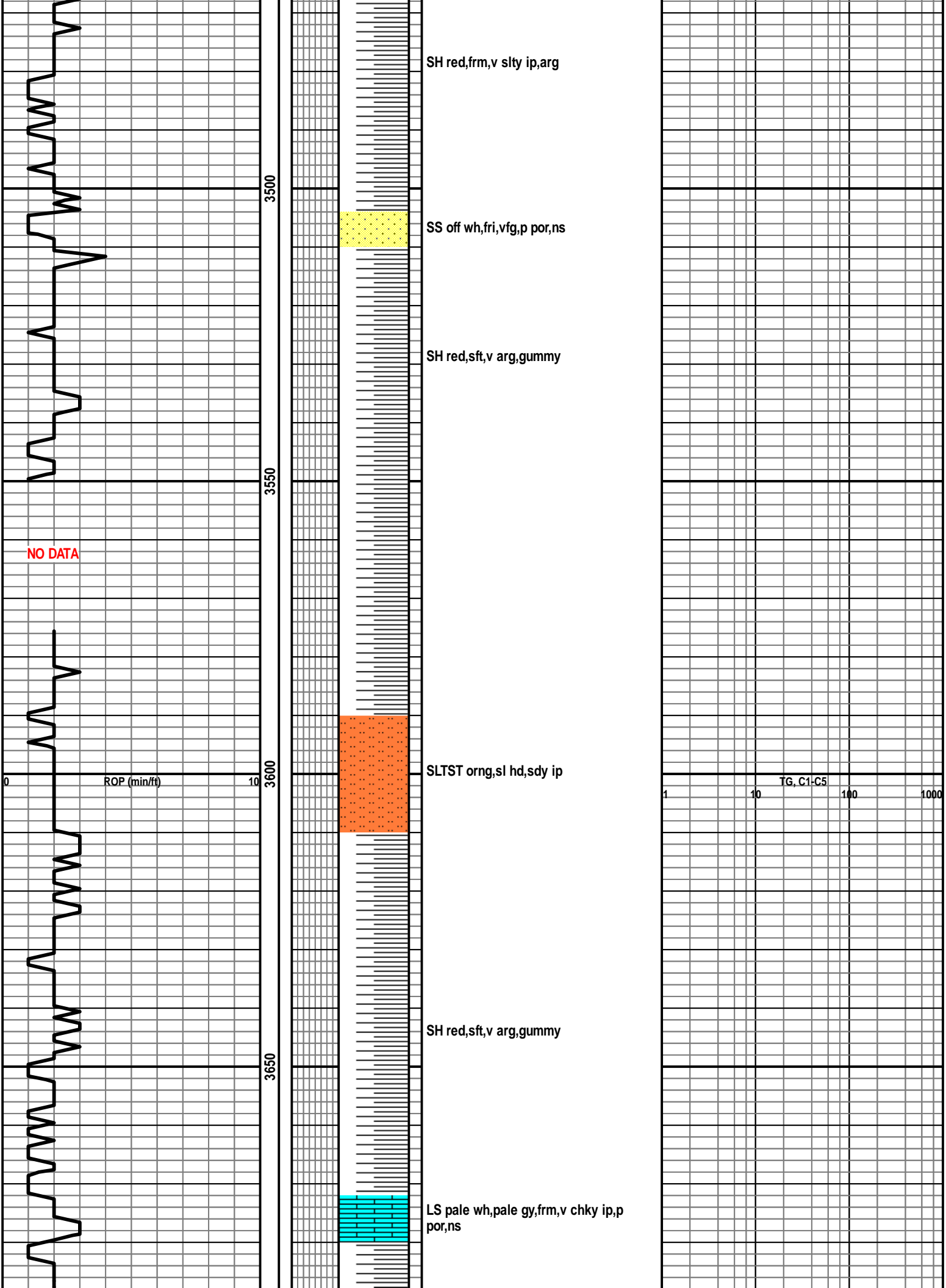
INTERVAL

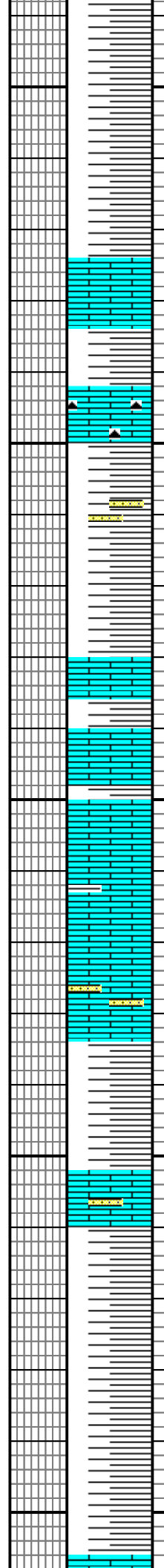
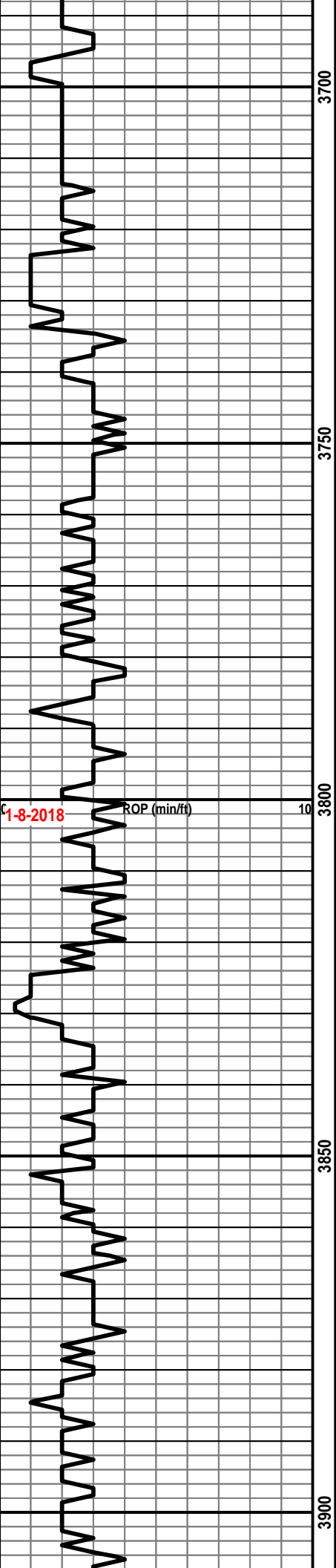
- Dst
- Dst

EVENT

- Rft
- Sidewall







SH aa sft,v arg

LS off wh,frm,foss,chky ip,p por,ns

SH red,sft,arg

LS wh,pale gy,frm,v chky ip,v abnt Cht
orng

SH red,gy,sft,v arg some sdy ip

LS pale gy,hd,blky,vf microIn,ns with
thin SH aa

LS wh,crm,frm,chky ip,p por,ns with thin
SH aa

LS wh,crm,frm,v sdy ip,p por,ns

SH red,gn,sft,v arg

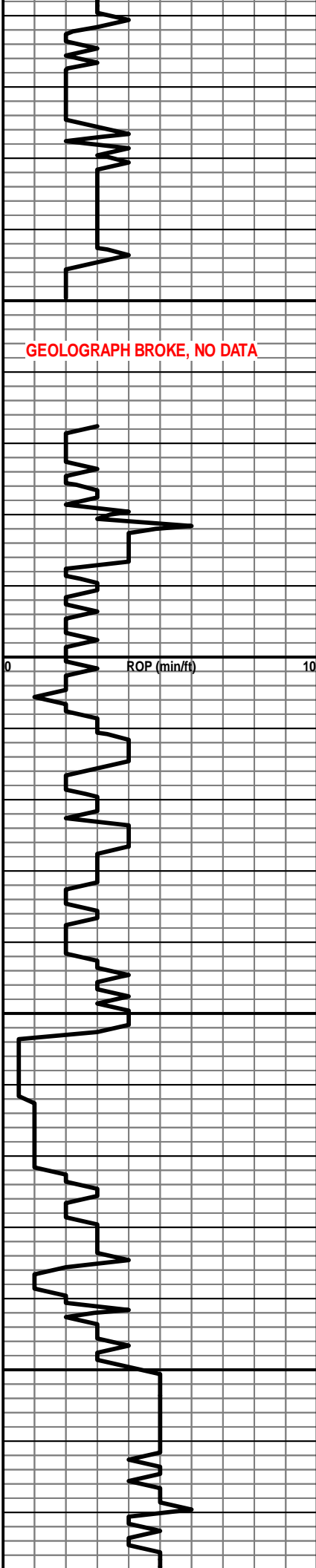
LS crm,frm,v sdy,vfg,p por,ns

SH red,v sft,v arg with thin LS pale
gy,hd,blky

FORAKER
3780(-507) S
3776(-503) L

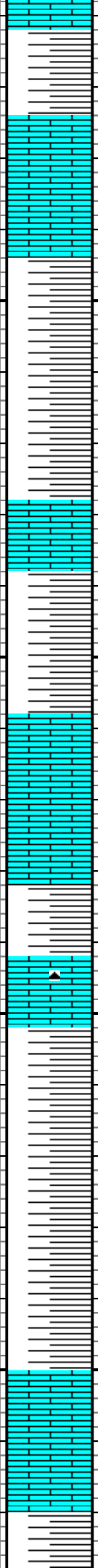
TG, C1-C5
1 10 100 1000

MUD DATA 3855'
WT 8.9 VIS 51 FL 7.6
PH 11.0 CK 2 CL 800
LCM .5



GEOLOGRAPH BROKE, NO DATA

3950
4000
4050
4100



LS pale gy,frm,v foss,p intrgr por,ns

SH red,sft,v arg

LS crm,hd,blky,crptoxln, some chky ip,ns

SH aa

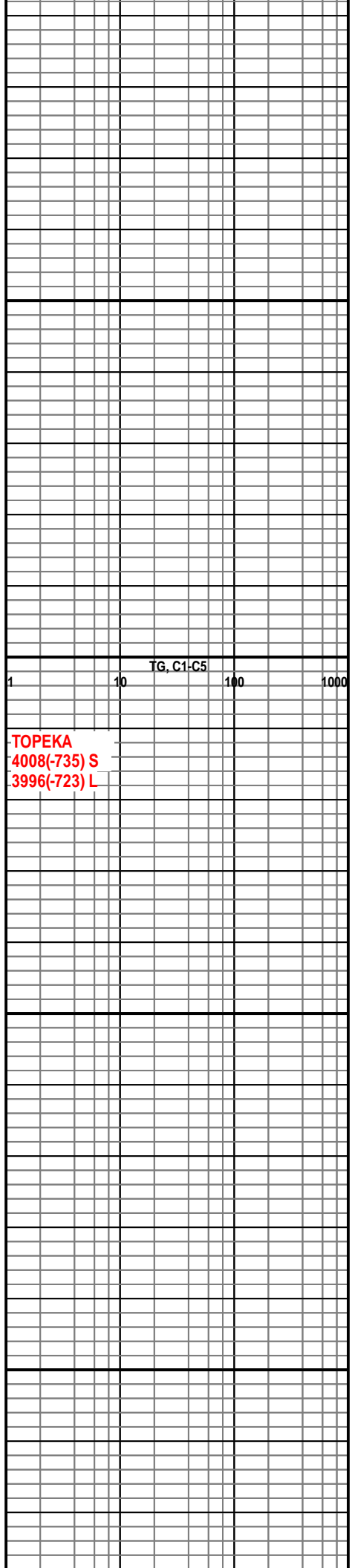
LS wh,crm some buff,v hd,dns,blky,crptoxln-vfny xln,chky ip,p por,ns

SH aa

LS aa bcmg Cherty orng

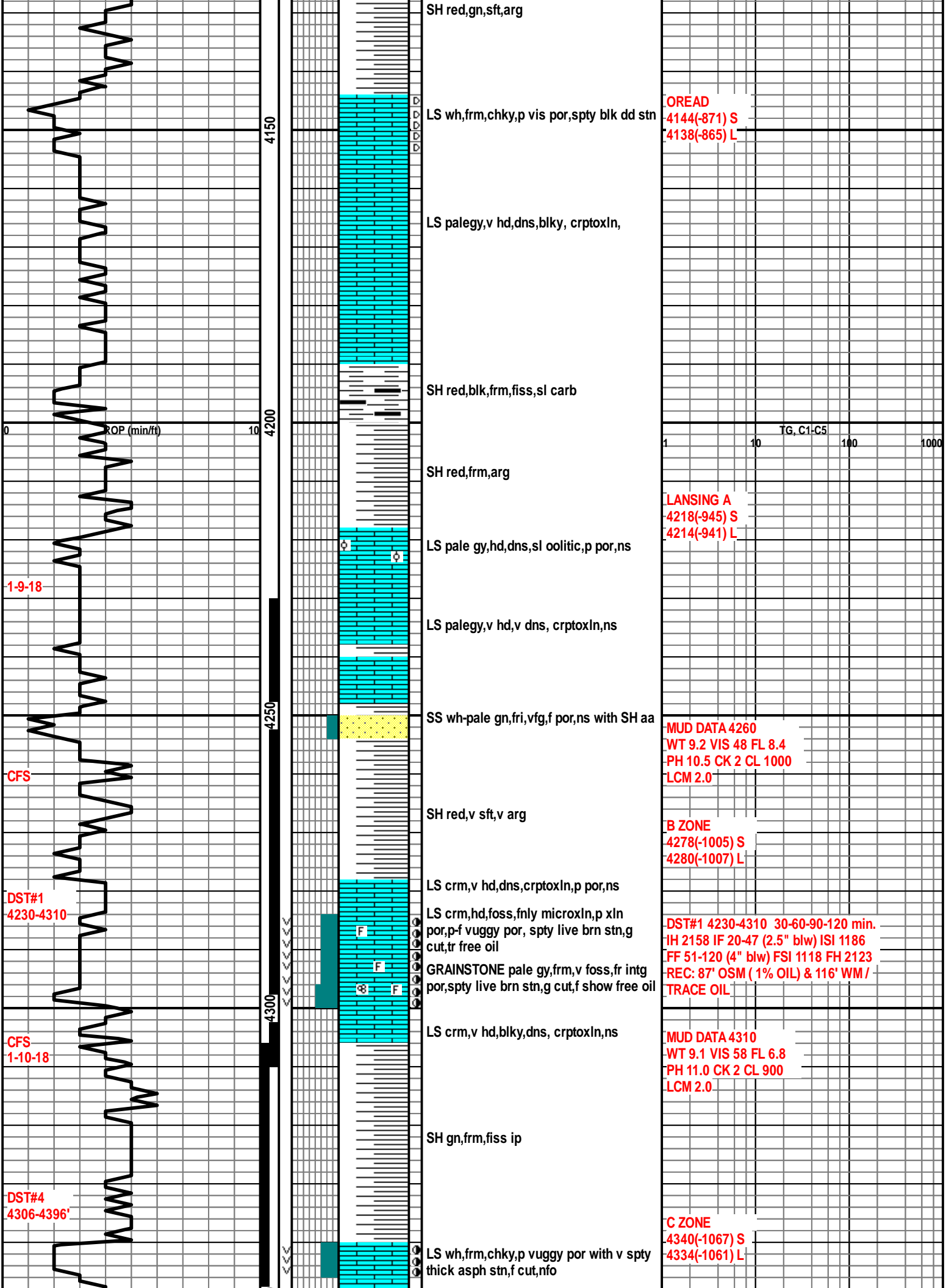
SH red,v sft,v arg

LS crm,buff,v hd,dns,blky,chky ip,tr Cht orng



TOPEKA
4008(-735) S
3996(-723) L

TG, C1-C5



4150

4200

4250

4300

SH red,gn,sft,arg

LS wh,frm,chky,p vis por,spty blk dd stn

OREAD
4144(-871) S
4138(-865) L

LS palegy,v hd,dns,blky, crptoxln,

SH red,blk,frm,fiss,sl carb

SH red,frm,arg

LANSING A
4218(-945) S
4214(-941) L

LS pale gy,hd,dns,sl oolitic,p por,ns

1-9-18

LS palegy,v hd,v dns, crptoxln,ns

SS wh-pale gn,fri,vfg,f por,ns with SH aa

MUD DATA 4260
WT 9.2 VIS 48 FL 8.4
PH 10.5 CK 2 CL 1000
LCM 2.0

CFS

SH red,v sft,v arg

B ZONE
4278(-1005) S
4280(-1007) L

LS crm,v hd,dns,crptoxln,p por,ns

DST#1
4230-4310

LS crm,hd,foss,fnly microxln,p xln
por,p-f vuggy por, spty live brn stn,g
cut,tr free oil

DST#1 4230-4310 30-60-90-120 min.
IH 2158 IF 20-47 (2.5" blw) ISI 1186
FF 51-120 (4" blw) FSI 1118 FH 2123
REC: 87' OSM (1% OIL) & 116' WM /
TRACE OIL

GRAINSTONE pale gy,frm,v foss,fr intg
por,spty live brn stn,g cut,f show free oil

CFS
1-10-18

LS crm,v hd,blky,dns, crptoxln,ns

MUD DATA 4310
WT 9.1 VIS 58 FL 6.8
PH 11.0 CK 2 CL 900
LCM 2.0

SH gn,frm,fiss ip

DST#4
4306-4396'

LS wh,frm,chky,p vuggy por with v spty
thick asph stn,f cut,nfo

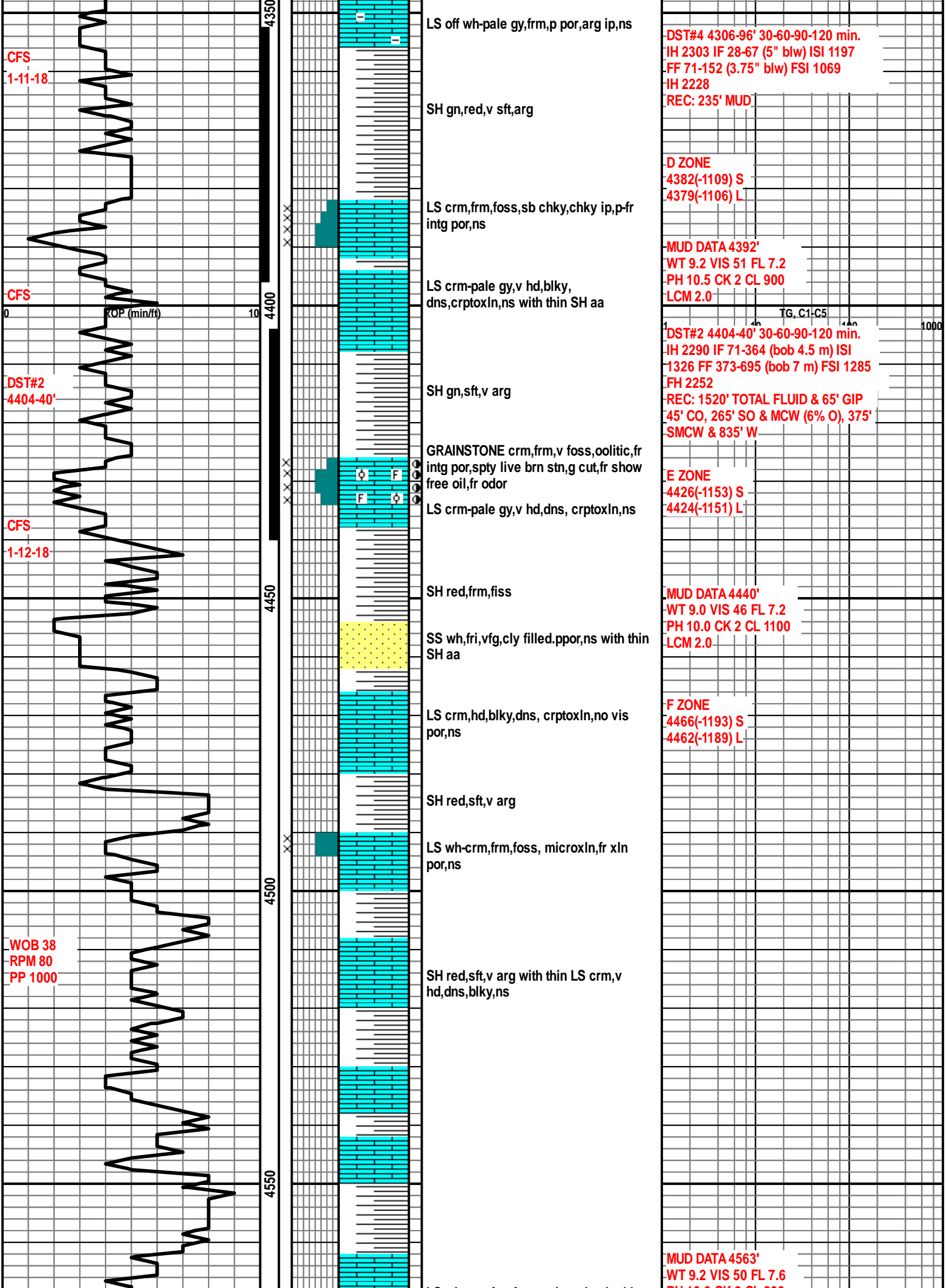
C ZONE
4340(-1067) S
4334(-1061) L

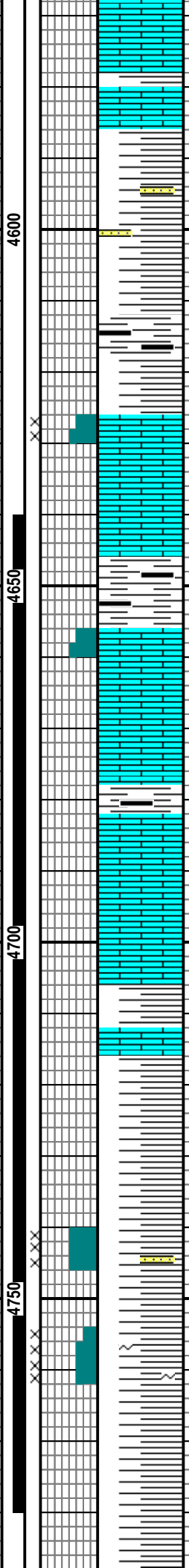
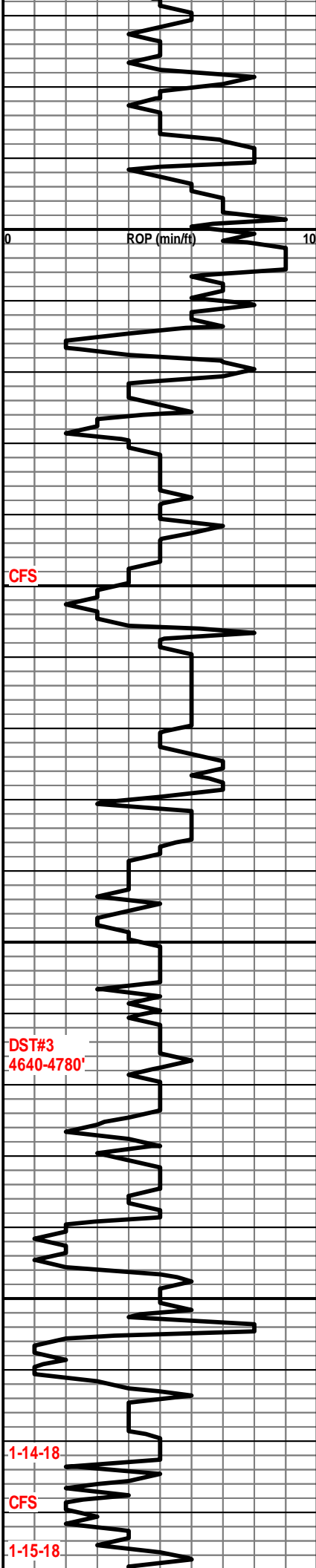
ROP (min/ft)

TG, C1-C5

0 10

1 10 100 1000





LS wh,crm,frm,foss, microIn-sb chky,p por,ns with thin SH aa

SH gn,frm,fiss,some v arg, sdy ip

SH blk,gn,frm,fiss,carb with SH aa

LS wh,crm,frm,v foss,sb chky-chky ip,p-fr intg por,ns

LS crm-pale gy,v hd,dns, crptoxIn,ns

Sh aa gn,blk,frm,fiss,carb

LS wh,frm,foss,microIn,p por,ns

LS crm-pale gy,v hd,dns, crptoxIn,ns

SH blk,frm,fiss,carb

LS aa dns,chky ip,p vis por,ns

SH gn,red,sft,v arg with thin LS aa v hd,dns

LS wh-crm,frm,v foss,p-fr intg por, sdy ip,ns

SH aa

SS trnsI,frm-hd,vfg,sileous cmt,sl glau,p vis por,ns

SH red,gn,yell,marn,frm, fiss

PH 10.0 CK 2 CL 800
LCM 2.0

TG, C1-C5

PAWNEE
4626(-1353) S
4616(-1343) L

FT SCOTT
4656(-1383) S
4646(-1373) L

CHEROKEE
4678(-1405) S
4672(-1399) L

DST#3 4640-4780' 30-60-90-120 min.
IH 2457 IF 27-91 (5.5" blw) ISI 1254
FF 95-231 (7" blw) FSI 1269 FH 2409
REC: 190' MUD & 230' WCM

MUD DATA 4780'
WT 9.1 VIS 63 FL 8.0
PH 10.5 CK 2 CL 900

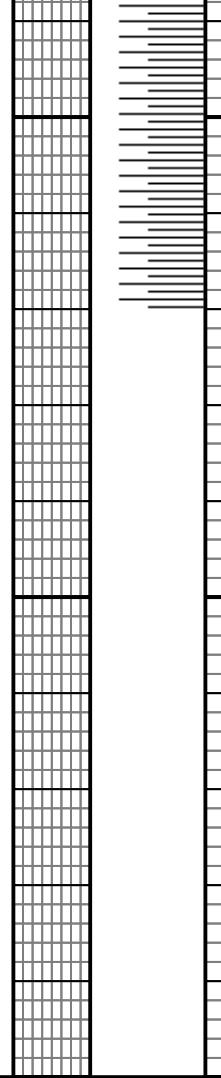
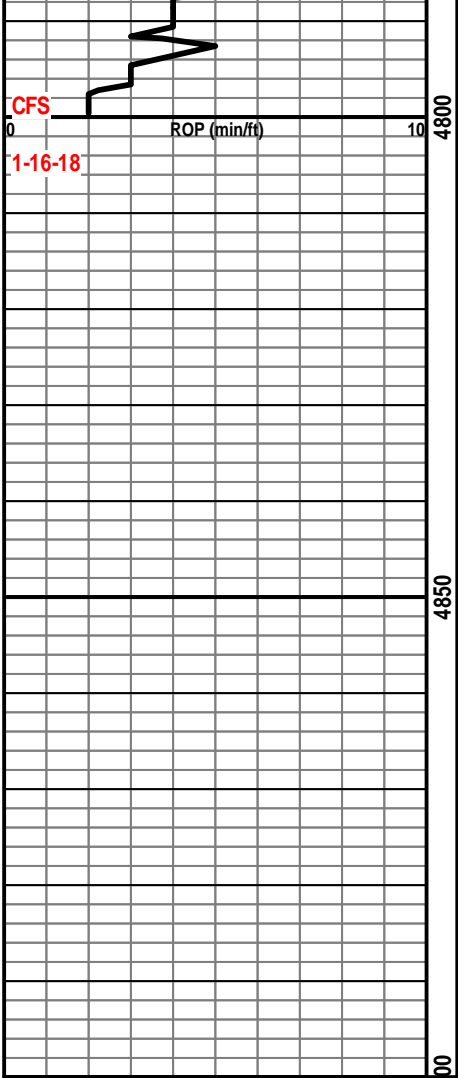
CFS

DST#3
4640-4780'

1-14-18

CFS

1-15-18



RTD 4800'
LTD 4796'

