

**Fall & Associates**  
 Stake and Elevation Service  
 P.O. Box 222  
 Pretty Prairie, KS. 67570  
 785-243-7506

Date 6-13-18

Invoice Number 0605182

MURFIN DRILLING

1-21

Smith 'A'

Operator

Number

Farm Name

Cheyenne-KS

21

2s

371w

2210'FSL 1320'FEL

County-State

S

T

R

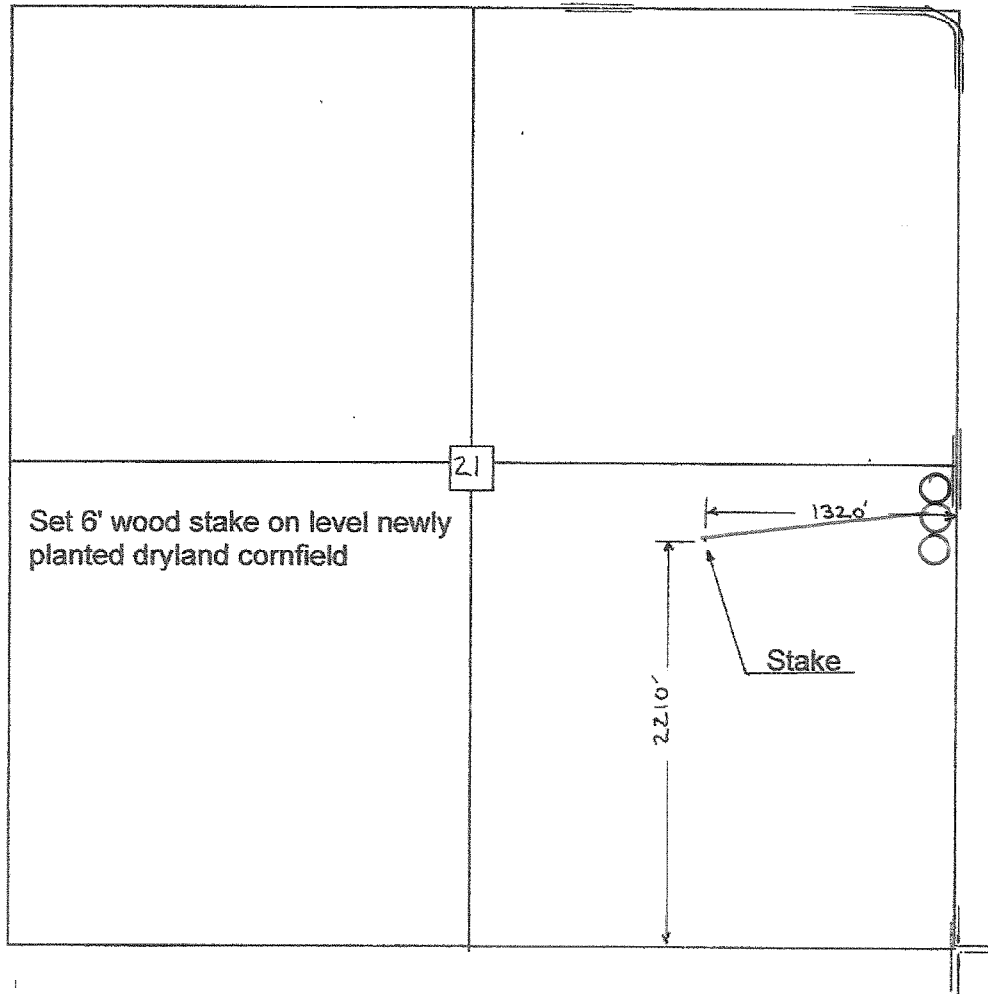
Location

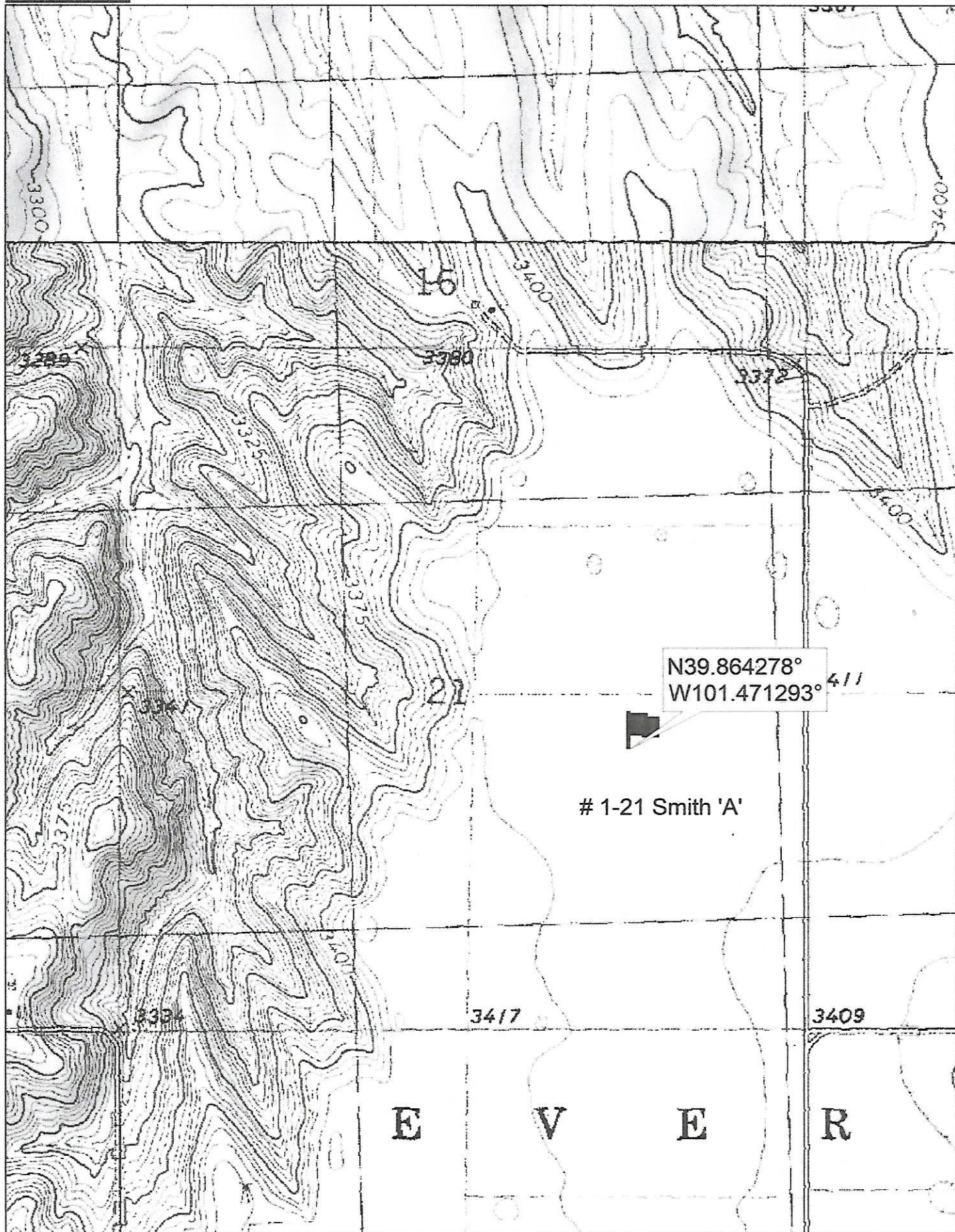
Murfin Drilling  
 250 N. Water  
 Suite 300  
 Wichita, KS. 67202

Elevation 3413 Gr.

Ordered By: Shauna

Scale 1"=1000'





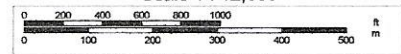
Data use subject to license.

© DeLorme. Topo North America™ 9.

www.delorme.com



Scale 1 : 12,000



1" = 1,000.0 ft Data Zoom 13-1