



Fall & Associates
 Stake and Elevation Service
 P.O. Box 222
 Pretty Prairie, KS. 67570
 785-243-7506

Date 6-13-18

Invoice Number 0608181

GREAT PLAINS ENERGY

1

Lang

Operator

Number

Farm Name

Norton-KS

32

2s

23w

1650'FSL 1400'FWL

County-State

S

T

R

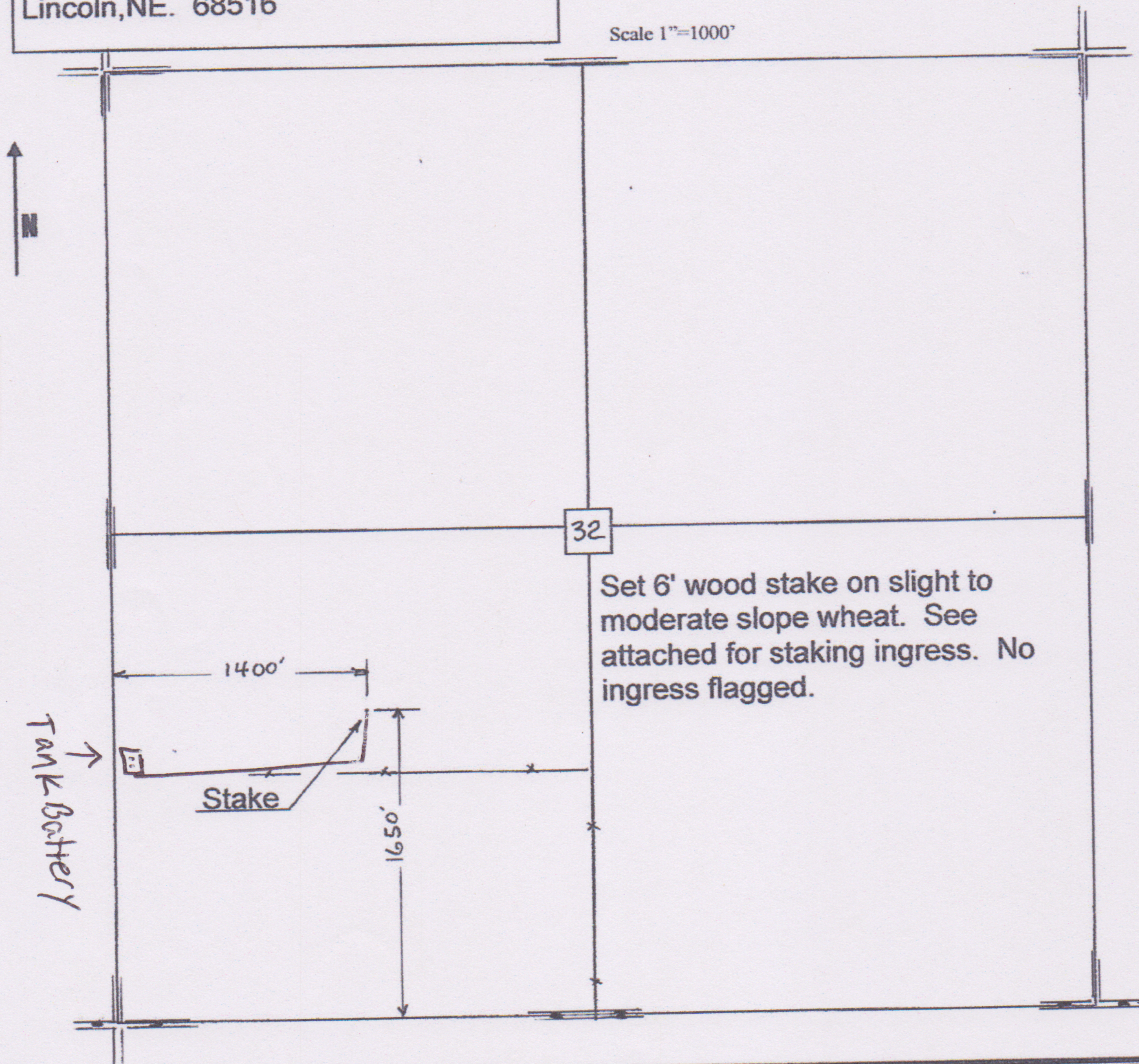
Location

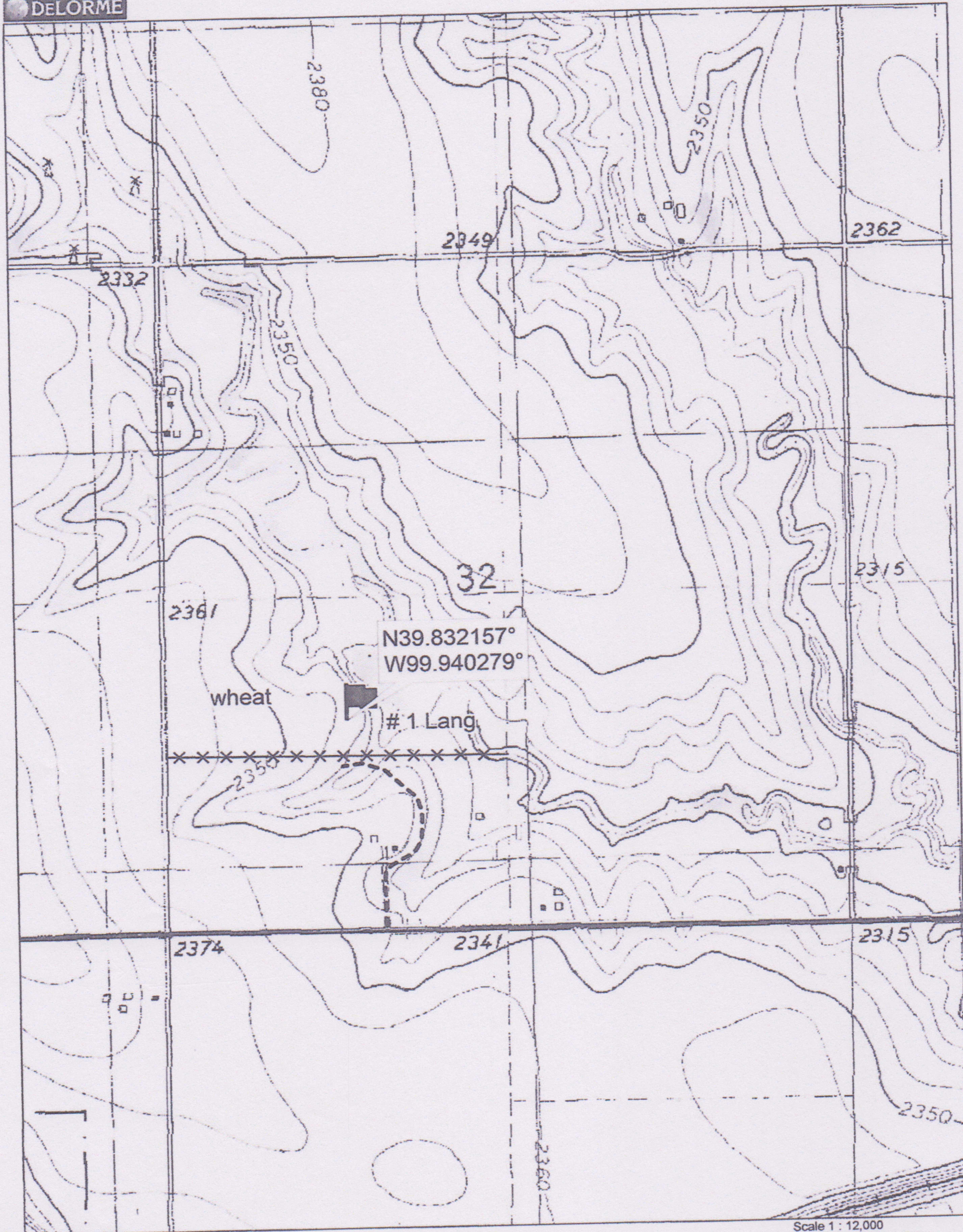
Great Plains Energy
 6121 S 58th Street
 Suite B
 Lincoln, NE. 68516

Elevation 2339 Gr.

Ordered By: Dan

Scale 1"=1000'





Data use subject to license.

© DeLorme. Topo North America™ 9.

www.delorme.com

