



## DRILL STEM TEST REPORT

Prepared For: **R&B Oil & Gas**

PO Box 195  
Attica, KS 67009

ATTN: Tim Pierce

### **Goetz A #1**

#### **18-30S-9W Kingman,KS**

Start Date: 2018.04.24 @ 13:14:09

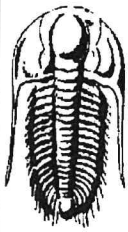
End Date: 2018.04.24 @ 22:04:11

Job Ticket #: 59859                      DST #: 1

Trilobite Testing, Inc  
1515 Commerce Parkway Hays, KS 67601  
ph: 785-625-4778 fax: 785-625-5620

Printed: 2018.04.25 @ 10:09:24

R&B Oil & Gas    18-30S-9W Kingman,KS    Goetz A #1    DST # 1    KC    2018.04.24



**TRILOBITE TESTING, INC.**

# DRILL STEM TEST REPORT

R&B Oil & Gas

**18-30S-9W Kingman, KS**

PO Box 195  
Attica, KS 67009

**Goetz A #1**

Job Ticket: 59859

**DST#: 1**

ATTN: Tim Pierce

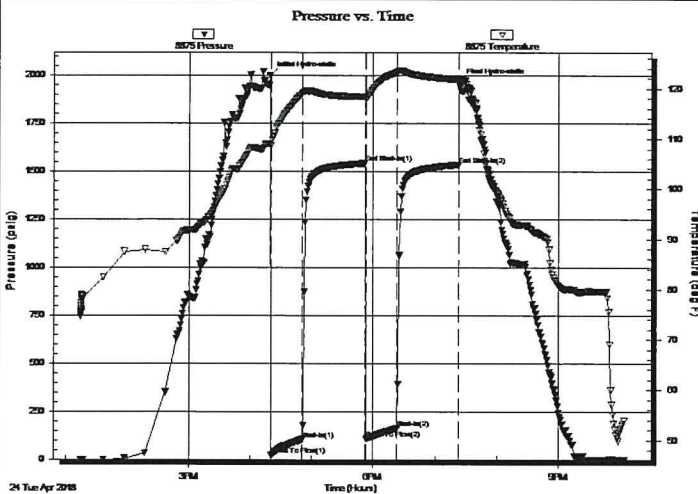
Test Start: 2018.04.24 @ 13:14:09

## GENERAL INFORMATION:

Formation: **KC**  
 Deviated: No Whipstock: ft (KB)  
 Time Tool Opened: 16:20:11  
 Time Test Ended: 22:04:11  
 Interval: **4088.00 ft (KB) To 4108.00 ft (KB) (TVD)**  
 Total Depth: 4108.00 ft (KB) (TVD)  
 Hole Diameter: 7.88 inches Hole Condition: Good  
 Test Type: Conventional Bottom Hole (Initial)  
 Tester: Leal Cason  
 Unit No: 74  
 Reference Elevations: 1705.00 ft (KB)  
 1700.00 ft (CF)  
 KB to GR/CF: 5.00 ft

**Serial #: 8875** Inside  
 Press@RunDepth: 162.64 psig @ 4089.00 ft (KB) Capacity: psig  
 Start Date: 2018.04.24 End Date: 2018.04.24 Last Calib.: 2018.04.24  
 Start Time: 13:14:10 End Time: 22:04:11 Time On Btm: 2018.04.24 @ 16:19:11  
 Time Off Btm: 2018.04.24 @ 19:23:41

TEST COMMENT: IF; Fair Blow, BOB in 12 minutes, Built to 24 1/2"  
 IS: No Blow Back  
 FF: Fair Blow, BOB in 20 minutes, Built to 17"  
 FS: No Blow Back



## PRESSURE SUMMARY

Time (Min.)	Pressure (psig)	Temp (deg F)	Annotation
0	1997.66	109.06	Initial Hydro-static
1	23.43	108.63	Open To Flow (1)
32	105.66	119.15	Shut-In(1)
94	1542.02	118.36	End Shut-In(1)
94	110.12	117.89	Open To Flow (2)
124	162.64	123.34	Shut-In(2)
184	1534.31	121.88	End Shut-In(2)
185	1964.22	121.91	Final Hydro-static

## Recovery

Length (ft)	Description	Volume (bbl)
252.00	Water	2.44
63.00	SOMCW -1%O 30%M +69%W	0.88
1.00	Oil	0.01

## Gas Rates

	Choke (inches)	Pressure (psig)	Gas Rate (Mcf/d)



**TRILOBITE TESTING, INC.**

**DRILL STEM TEST REPORT**

R&B Oil & Gas

**18-30S-9W Kingman, KS**

PO Box 195  
Attica, KS 67009

**Goetz A #1**

Job Ticket: 59859 **DST#: 1**

ATTN: Tim Pierce

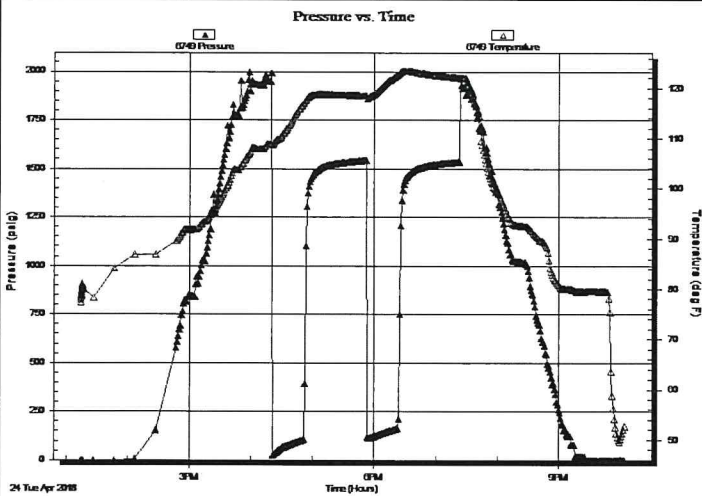
Test Start: 2018.04.24 @ 13:14:09

**GENERAL INFORMATION:**

Formation: **KC**  
 Deviated: No Whipstock: ft (KB)  
 Time Tool Opened: 16:20:11  
 Time Test Ended: 22:04:11  
**Interval: 4088.00 ft (KB) To 4108.00 ft (KB) (TVD)**  
 Total Depth: 4108.00 ft (KB) (TVD)  
 Hole Diameter: 7.88 inches Hole Condition: Good  
 Test Type: Conventional Bottom Hole (Initial)  
 Tester: Leal Cason  
 Unit No: 74  
 Reference Elevations: 1705.00 ft (KB)  
 1700.00 ft (CF)  
 KB to GR/CF: 5.00 ft

**Serial #: 6749** **Outside**  
 Press@RunDepth: psig @ 4089.00 ft (KB) Capacity: psig  
 Start Date: 2018.04.24 End Date: 2018.04.24 Last Calib.: 2018.04.24  
 Start Time: 13:14:29 End Time: 22:04:30 Time On Btm:  
 Time Off Btm:

**TEST COMMENT:** IF; Fair Blow, BOB in 12 minutes, Built to 24 1/2"  
 IS: No Blow Back  
 FF: Fair Blow, BOB in 20 minutes, Built to 17"  
 FSI: No Blow Back



**PRESSURE SUMMARY**

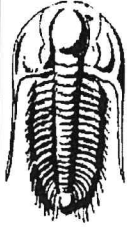
Time (Min.)	Pressure (psig)	Temp (deg F)	Annotation

**Recovery**

Length (ft)	Description	Volume (bbl)
252.00	Water	2.44
63.00	SOMCW -1%O 30%M +69%W	0.88
1.00	Oil	0.01

**Gas Rates**

	Choke (inches)	Pressure (psig)	Gas Rate (Mcf/d)



**TRILOBITE  
TESTING, INC.**

**DRILL STEM TEST REPORT**

**TOOL DIAGRAM**

R&B Oil & Gas

**18-30S-9W Kingman,KS**

PO Box 195  
Attica, KS 67009

**Goetz A #1**

Job Ticket: 59859

**DST#: 1**

ATTN: Tim Pierce

Test Start: 2018.04.24 @ 13:14:09

**Tool Information**

Drill Pipe:	Length: 3978.00 ft	Diameter: 3.80 inches	Volume: 55.80 bbl	Tool Weight: 2100.00 lb
Heavy Wt. Pipe:	Length: 0.00 ft	Diameter: 0.00 inches	Volume: 0.00 bbl	Weight set on Packer: 25000.00 lb
Drill Collar:	Length: 120.00 ft	Diameter: 2.25 inches	Volume: 0.59 bbl	Weight to Pull Loose: 70000.00 lb
			<u>Total Volume: 56.39 bbl</u>	Tool Chased ft
Drill Pipe Above KB:	29.00 ft			String Weight: Initial 60000.00 lb
Depth to Top Packer:	4088.00 ft			Final 62000.00 lb
Depth to Bottom Packer:	ft			
Interval between Packers:	20.00 ft			
Tool Length:	39.00 ft			
Number of Packers:	2	Diameter: 6.75 inches		

Tool Comments:

Tool Description	Length (ft)	Serial No.	Position	Depth (ft)	Accum. Lengths
Shut In Tool	5.00			4074.00	
Hydraulic tool	5.00			4079.00	
Packer	5.00			4084.00	19.00 Bottom Of Top Packer
Packer	4.00			4088.00	
Stubb	1.00			4089.00	
Recorder	0.00	8875	Inside	4089.00	
Recorder	0.00	6749	Outside	4089.00	
Perforations	16.00			4105.00	
Bullnose	3.00			4108.00	20.00 Bottom Packers & Anchor
<b>Total Tool Length:</b>	<b>39.00</b>				



**TRILOBITE  
TESTING, INC**

# DRILL STEM TEST REPORT

## FLUID SUMMARY

R&B Oil & Gas

**18-30S-9W Kingman, KS**

PO Box 195  
Attica, KS 67009

**Goetz A #1**

Job Ticket: 59859

**DST#: 1**

ATTN: Tim Pierce

Test Start: 2018.04.24 @ 13:14:09

### Mud and Cushion Information

Mud Type: Gel Chem

Cushion Type:

Oil API:

deg API

Mud Weight: 9.00 lb/gal

Cushion Length:

ft

Water Salinity:

60000 ppm

Viscosity: 50.00 sec/qt

Cushion Volume:

bbl

Water Loss: 8.78 in<sup>3</sup>

Gas Cushion Type:

Resistivity: ohm.m

Gas Cushion Pressure:

psig

Salinity: 5000.00 ppm

Filter Cake: 0.02 inches

### Recovery Information

Recovery Table

Length ft	Description	Volume bbl
252.00	Water	2.442
63.00	SOMCW - 1%O 30%M +69%W	0.884
1.00	Oil	0.014

Total Length: 316.00 ft

Total Volume: 3.340 bbl

Num Fluid Samples: 0

Num Gas Bombs: 0

Serial #:

Laboratory Name:

Laboratory Location:

Recovery Comments: RW was .2 @ 45 degrees

Serial #: 8875

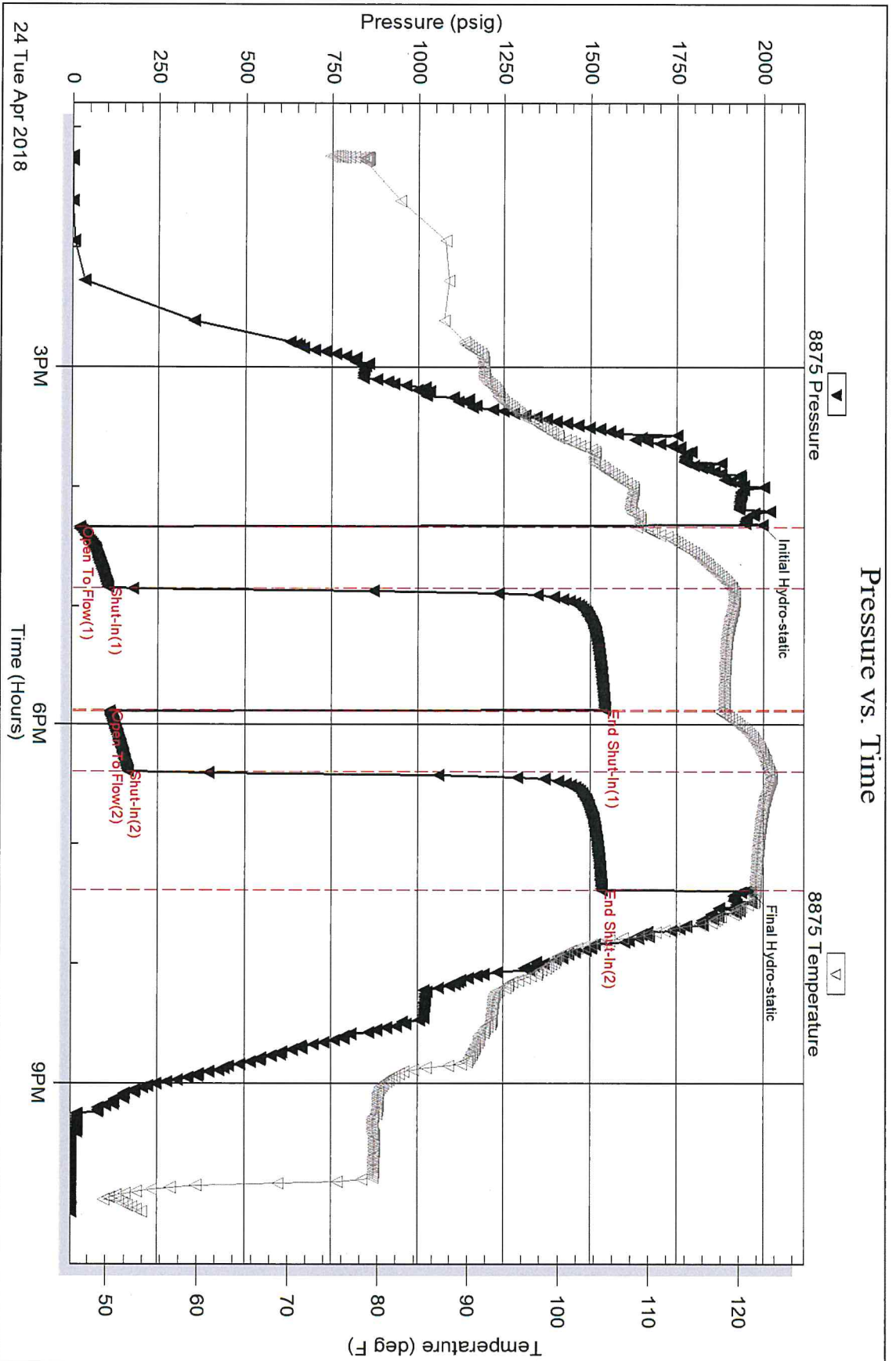
Inside

R&B Oil & Gas

Goetz A #1

DST Test Number: 1

### Pressure vs. Time

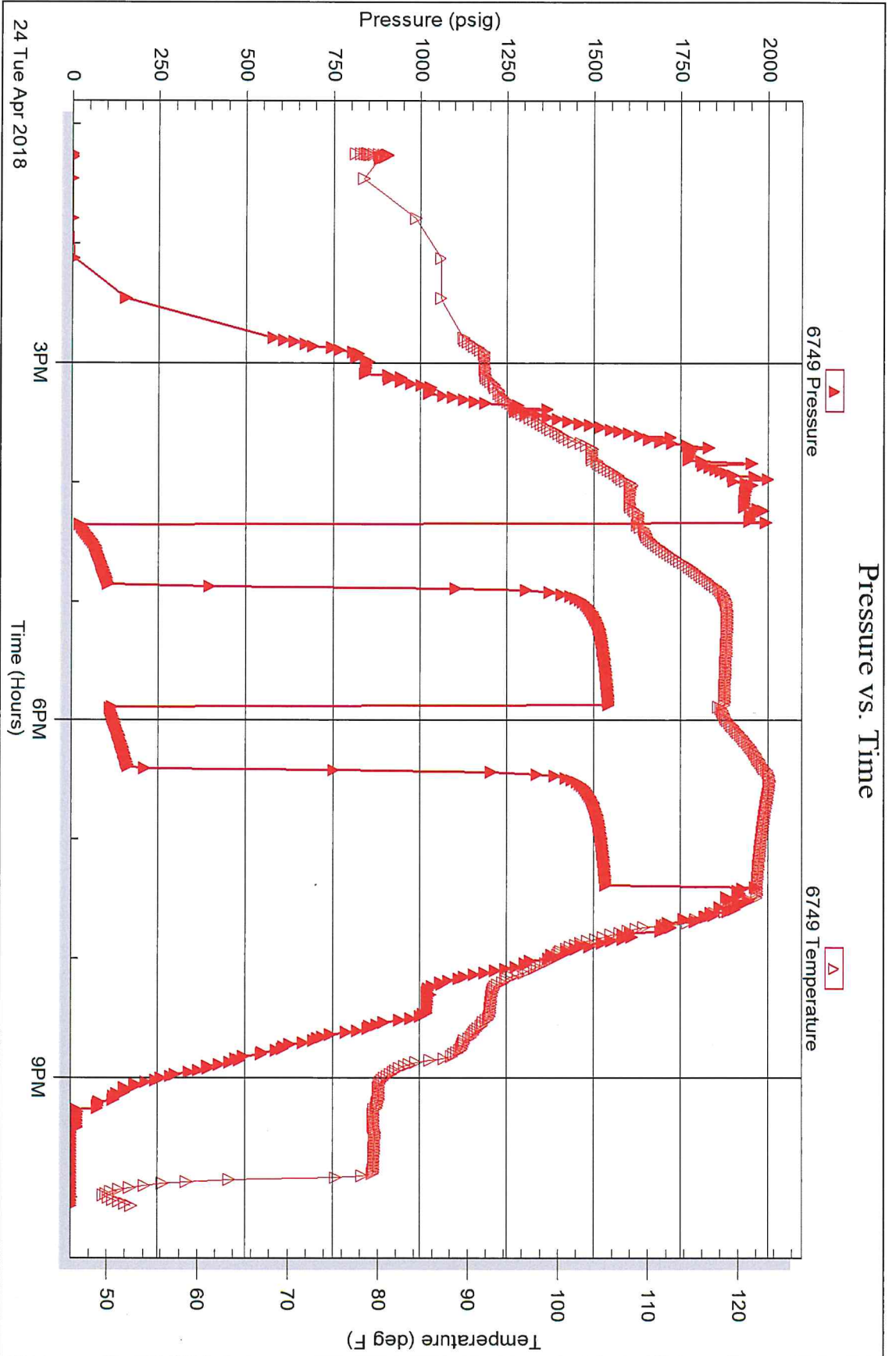


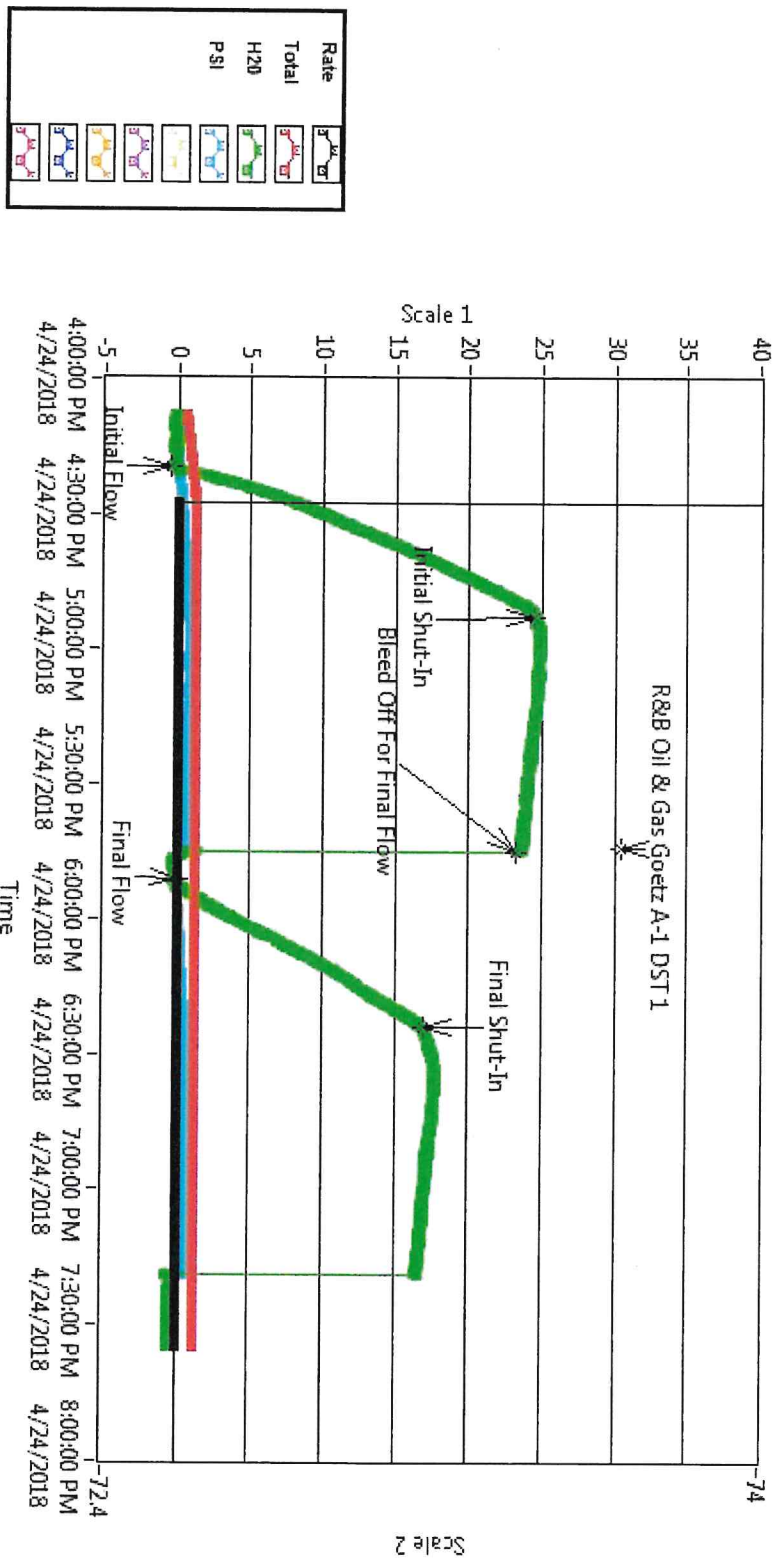
Serial #: 6749

Outside R&B Oil & Gas

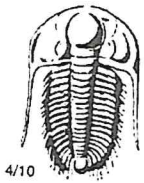
Goetz A #1

DST Test Number: 1









# TRILOBITE TESTING INC.

1515 Commerce Parkway • Hays, Kansas 67601

## Test Ticket

NO. 59859

Well Name & No. Goetz A-1 Test No. 1 Date 04/24/18  
 Company R+B Oil & Gas Elevation 1705 KB 1700 GL  
 Address PO Box 195 Atira, KS 67009  
 Co. Rep / Geo. Tim Pierce Rig WW 4  
 Location: Sec. 18 Twp. 30S Rge. 9W Co. Kingman State KS

Interval Tested 4088 - 4108 Zone Tested KC  
 Anchor Length 20 Drill Pipe Run 3978 Mud Wt. 9.1  
 Top Packer Depth 4083 Drill Collars Run 120 Vis 50  
 Bottom Packer Depth 4088 Wt. Pipe Run 0 WL 8.8  
 Total Depth 4108 Chlorides 5000 ppm System LCM 2

Blow Description IF: Fair Blow, BOB in 12 minutes, Built to 24 1/2 inches  
IS: NO BLOW BACK

FF: Fair Blow, BOB in 20 minutes, Built to 17 inches  
FS: NO BLOW BACK

Rec	Feet of	%gas	%oil	%water	%mud
<u>1</u>	<u>Oil</u>				
<u>63</u>	<u>SOMCW</u>				
<u>252</u>	<u>Water</u>	<u>-1</u>	<u>+69</u>	<u>30</u>	<u>30</u>
<u>316</u>	<u>BHT 122</u>				

- (A) Initial Hydrostatic 1998
- (B) First Initial Flow 23
- (C) First Final Flow 106
- (D) Initial Shut-In 1542
- (E) Second Initial Flow 110
- (F) Second Final Flow 163
- (G) Final Shut-In 1534
- (H) Final Hydrostatic 1464

Gravity N/C API RW .2 @ 45 °F Chlorides 6000 ppm

- Test 1150
- Jars
- Safety Joint
- Circ Sub
- Hourly Standby
- Mileage 90 90
- Sampler
- Straddle
- Shale Packer
- Extra Packer
- Extra Recorder
- Day Standby
- Accessibility
- Sub Total 1240

- T-On Location 11:30
- T-Started 13:14
- T-Open 16:20
- T-Pulled 19:22
- T-Out 22:04
- Comments \_\_\_\_\_
- Ruined Shale Packer
- Ruined Packer
- Extra Copies
- Sub Total 0
- Total 1240
- MP/DST Disc't \_\_\_\_\_

Initial Open 30  
 Initial Shut-In 60  
 Initial Flow 30  
 Initial Shut-In 60

Approved By Tim Pierce

Our Representative \_\_\_\_\_

Trilobite Testing Inc. shall not be liable for damaged or lost property or personnel of the one for whom a test is made, or for any loss suffered or sustained, directly or indirectly, through the use of its equipment, or its statements or opinion concerning the results of any test, tools lost or damaged in the hole shall be paid for at cost by the party for whom the test is made.