

Mull Drilling Company, Inc.

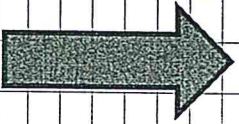
Unit Description

Well Name & Surface Location:

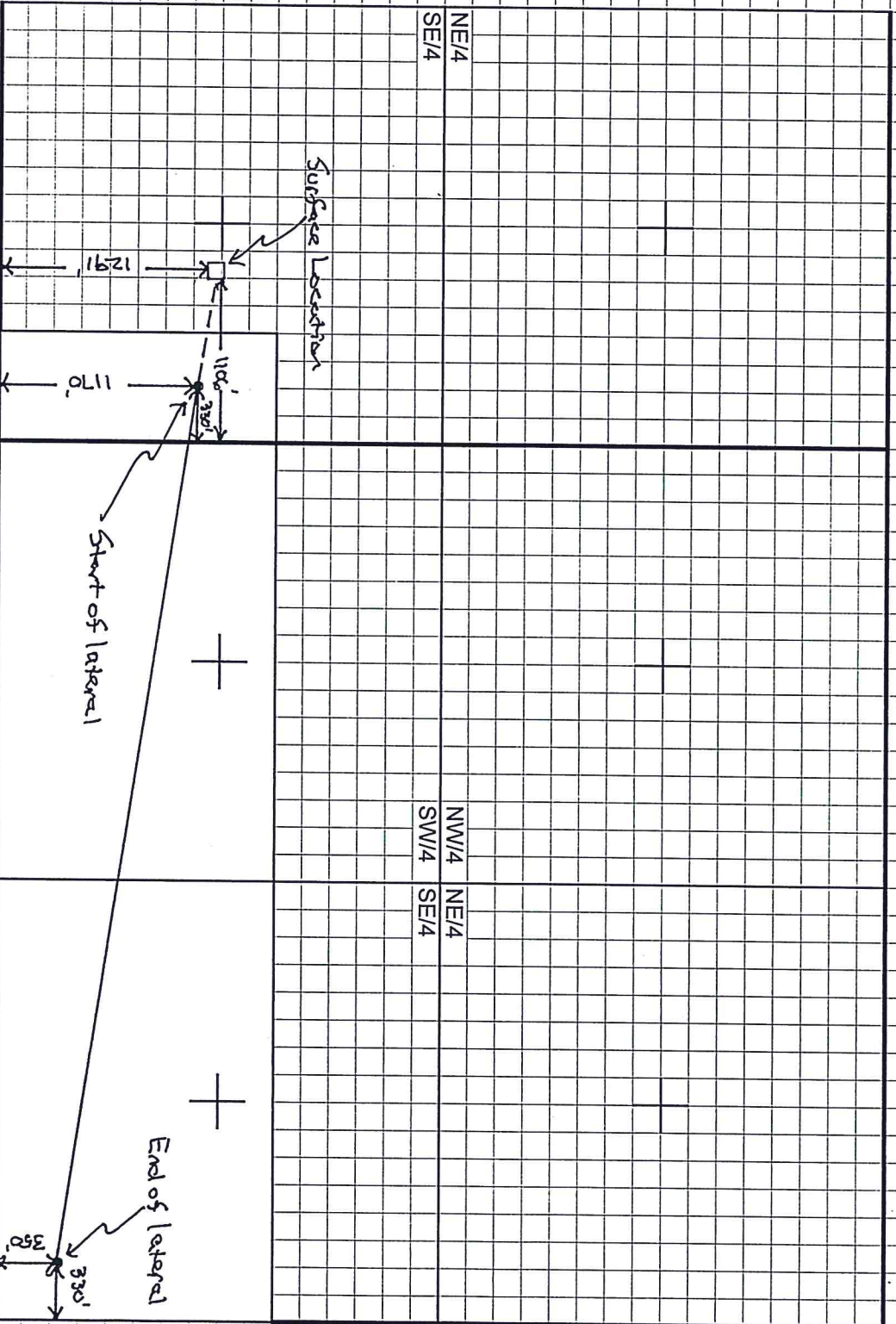
CBC Unit #1-31H, 1291' FSL & 1106' FEL, Section 31-T15S-R26W, Gove County, KS

Unit Description:

A 225 acre unit consisting of the E/2 SE/4 & S/2 SE/4 NE/4 of the SE/4 31-T15S-R26W, the S/2 S/2 N/2 & S/2 of the SW/4 and the S/2 S/2 N/2 & SW of the SE/4 of 32-T15S-R26W, Gove County, KS.



North



| | | | | | |
|----------------------------|-----|-------|----|-------|-----------|
| Total acreage in SE/4 31 = | 25 | Acres | or | 11.12 | % of Unit |
| Total acreage in SW/4 32 = | 100 | Acres | or | 44.44 | % of Unit |
| Total acreage in SE/4 32 = | 100 | Acres | or | 44.44 | % of Unit |

Scale: 1"=1000'

