

AUSTIN B. KLAUS

Cell 785.650.3629
Work 785.483.3145
Ext 225

PO BOX 352
Russell, KS 67665
austin.klaus@johnofarmer.com

Scale 1:240 (5"=100') Imperial
Measured Depth Log

Well Name: Dinkel East #5
Location: Ellis County
License Number: API #15-051-26909-00-00
Spud Date: 4/16/2018
Surface Coordinates: Section 5, Township 14 South, Range 17 West
330' FNL & 2,310' FEL
Bottom Hole Coordinates: Vertical well w/ minimal deviation, same as above
Ground Elevation (ft): 2,027
Logged Interval (ft): 2,900
Formation: LKC
Type of Drilling Fluid: Chemical (KDT)

Region: Kansas
Drilling Completed: 4/20/2018

K.B. Elevation (ft): 2,032
Total Depth (ft): 3,629
To: 3,629

Printed by STRIP.LOG from WellSight Systems 1-800-447-1534 www.WellSight.com

OPERATOR

Company: Production Drilling, Inc.
Address: 1023 Reservation Road
Hays, KS 67601

GEOLOGIST

Name: Austin Klaus
Company: John O. Farmer, Inc.
Address: 370 W. Wichita Ave.
Russell, KS 67665

Comments

The Dinkel East #5 well was drilled by WW Drilling Rig #8 (Tool Pusher: Scot Piland).

The Dinkel East #5 was drilled as a direct offset to the Dinkel East #1 (Weilert Enterprises; 1981-2010). Rock samples were gathered and evaluated from 3,000'-3,625'. Oil shows were encountered in the LKC A,C,D,E/F,H,I,J,K. Structurally, the Lansing top was picked 2' low to the comparison well, 60' to the northwest (Dinkel East #1). Thickening occurred throughout the LKC, which resulted in a B/KC picked 6' low to the offset well. The Arbuckle was absent from this wellbore. After evaluation of all oil shows, and electric logs, it was decided that 5 1/2" production casing be set to further evaluate the Dinkel East #5 on 4/21/2018.

ROCK TYPES

- Anhy
- Bent
- Brec
- Cht

- Clyst
- Coal
- Congl
- Dol

- Gyp
- Igne
- Lmst
- Meta

- Mrlst
- Salt
- Shale
- Shcol

- Shgy
- Slstst
- Ss
- Till

OTHER SYMBOLS

- POROSITY**
- Earthy
 - Fenest
 - Fracture
 - Inter
 - Moldic
 - Organic
 - Pinpoint

- Vuggy
- SORTING**
- Well
 - Moderate
 - Poor

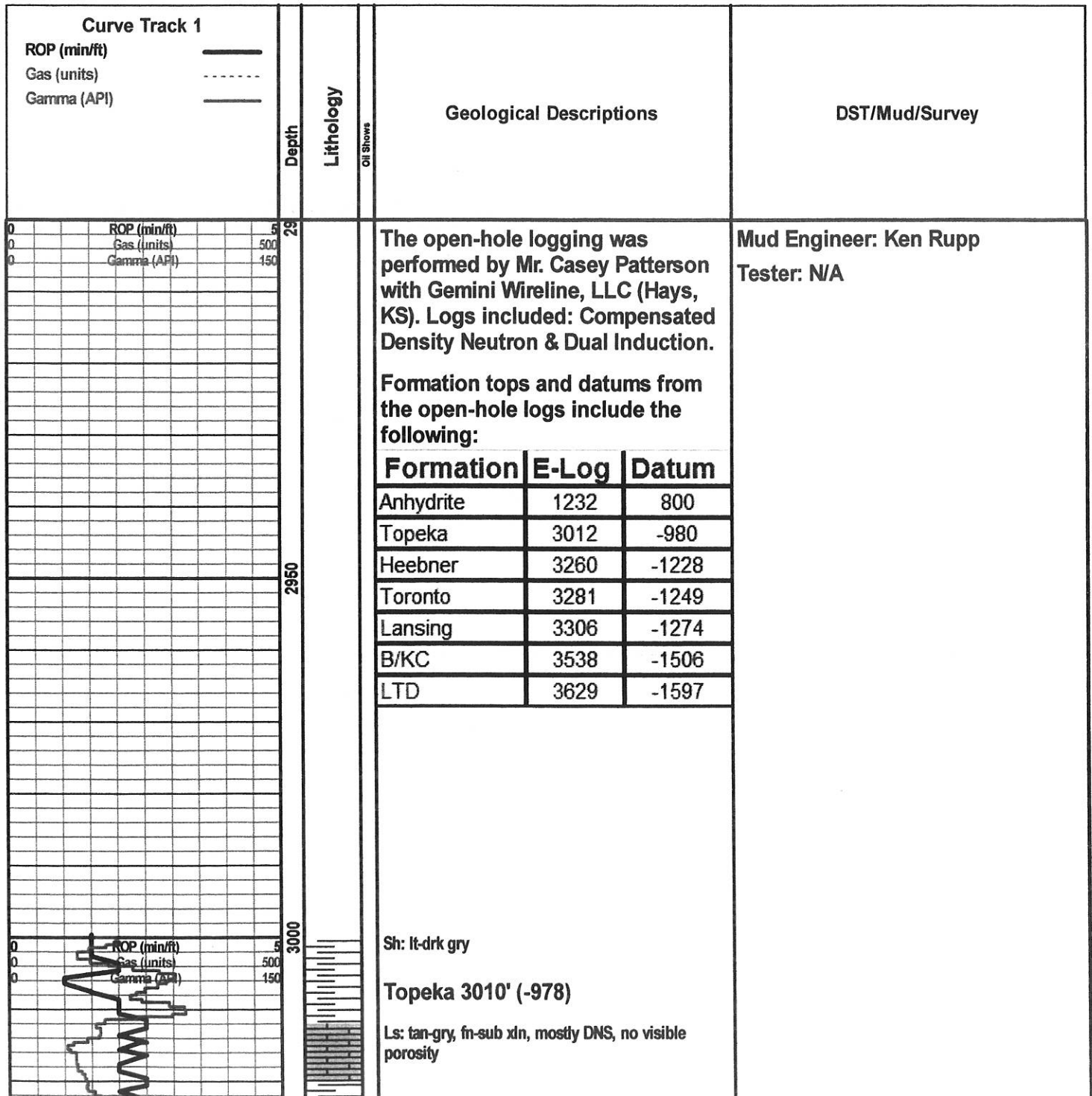
- ROUNDING**
- Rounded
 - Subrnd
 - Subang
 - Angular

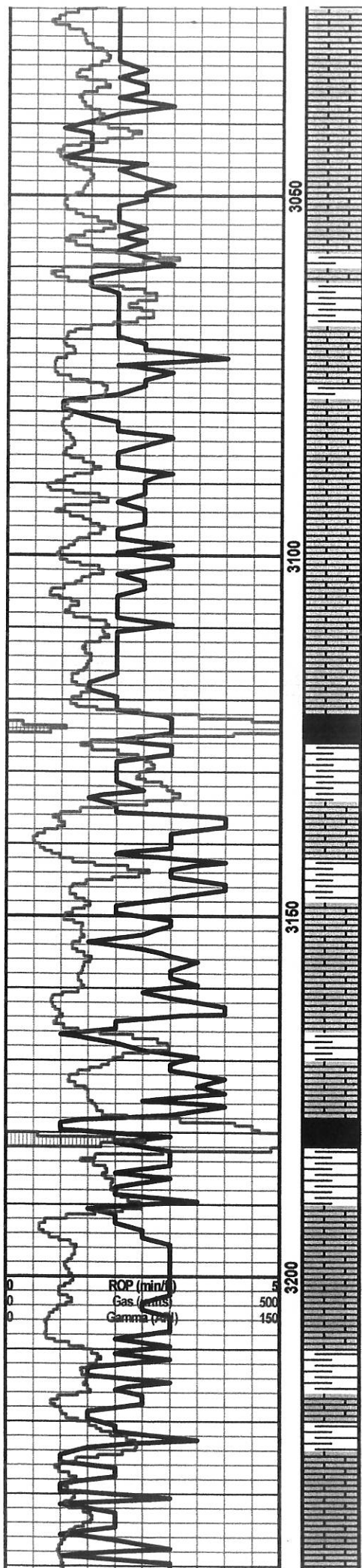
- Spotted
- Ques
- Dead

- EVENT**
- Rft
 - Sidewall

- INTERVAL**
- Core
 - Dst

- OIL SHOW**
- Even





Ls: ala

Ls: tan-gry, fn xln, poor-fair int xln & scat vuggy porosity, scat oil stn, VSSFO, vry fnt odor

Ls: tan-lt gry, fn-sub xln, no visible porosity, scat foss

Sh: lt-drk gry

Ls: tan-gry, fn-sub xln, mostly DNS, NSFO, scat foss

Ls: tan-gry, fn xln, scat foss, poor int xln porosity, NSFO, scat chalk

Ls: ala

Sh: drk gry, scat blk

Sh: lt-drk gry

Ls: tan-gry, fn-sub xln, mostly DNS, NSFO

Ls: off wh-tan-lt gry, fn xln, poor-fair int xln porosity, scat dead oil stn, NSFO, no odor, scat chalk

Sh: drk gry

Queenhill 3177' (-1145)

Sh: drk gry-blk

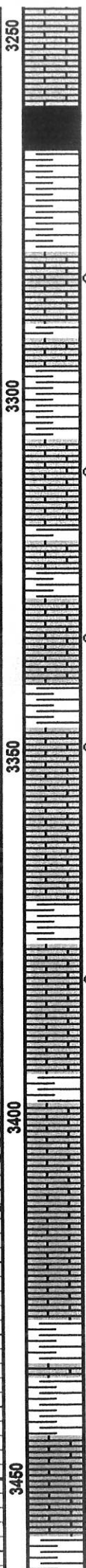
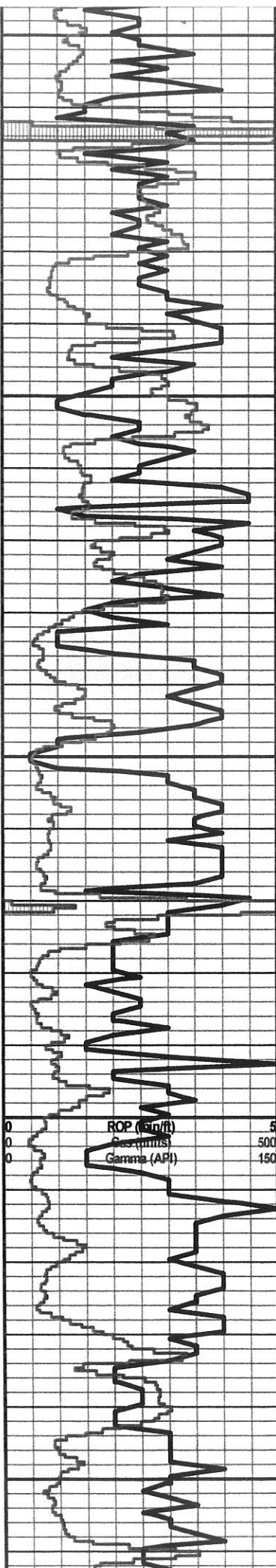
Ls: off wh-tan-lt gry, fn xln, scat foss, poor int xln & foss porosity, sl oil stn, NSFO, fnt odor, scat chalk

Ls: tan-gry, fn-sub xln, mostly DNS, NSFO

Sh: drk gry

Ls: off wh-tan, fn xln, poor-fair int xln porosity, fair oil stn in porosity, VSSFO, sl odor, chalky

ROP (min/hr) 5
 Gas (cc/stk) 500
 Gamma (ppm) 150



Heebner 3258' (-1226)

Sh: drk gry-blk, carb, fissile

Sh: lt-drk gry

Toronto 3278' (-1246)

Ls: tan-gry, fn xln, fair int xln & vuggy porosity, dead oil stn, VSSFO, fnt odor

Sh: lt-drk gry

Lansing 3304' (-1272)

Ls: off wh-tan, fn xln, poor int xln & scat vuggy porosity, scat oil stn, VSSFO, fnt odor

Sh: lt gry

Ls: off wh-tan, fn-sub xln, no visible porosity, NSFO

Ls: off wh-tan, fn xln, ool, fair-good oom porosity, good oil sat, S-FSFO, fair-good odor

Sh: lt gry

Ls: off wh-tan, fn xln, ool, foss, fair-good oom & int foss porosity, good oil sat, FSFO, fair-good odor, scat chert

Ls: off wh-tan, fn xln, no visible porosity, NSFO

Sh: drk gry-blk

Ls: off wh-tan, fn xln, foss, poor-fair int xln & scat int foss porosity, scat oil stn, SSFO, sl-fair odor

Sh: lt-drk gry

Ls: off wh-tan, fn xln, ool, fair-good oom porosity, mostly barren, NSFO

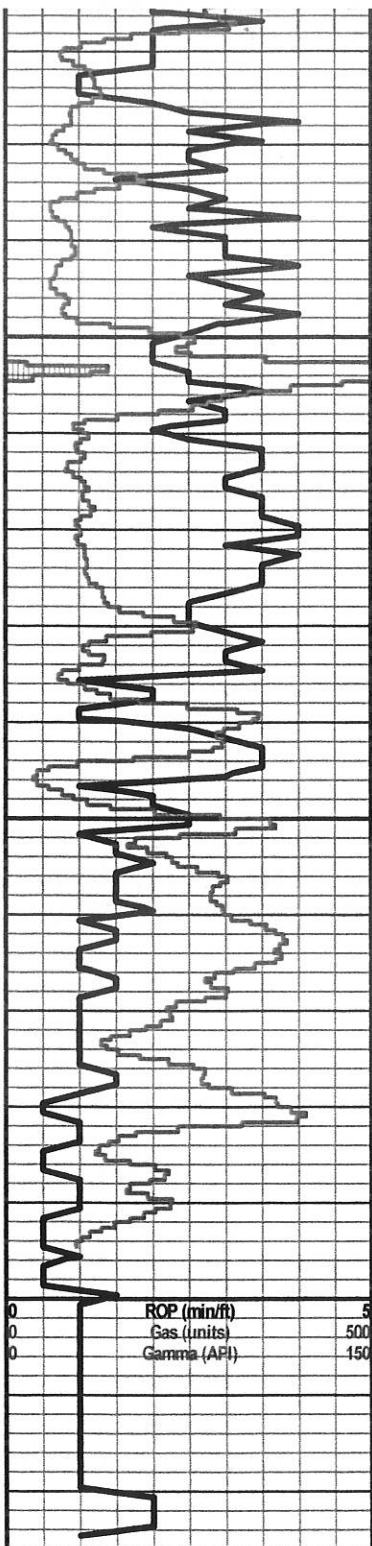
Ls: off wh-tan, fn-sub xln, mostly DNS, no visible porosity, NSFO, scat chert-off wh

Sh: drk gry-blk

Sh: lt-drk gry

Ls: off wh-tan, fn xln, foss, scat int xln porosity, scat oil stn, VSSFO, sl-fair odor, scat chert-off wh

Sh: drk gry



3500

3550

3600

ROP (min/ft)
Gas (units)
Gamma (API)

5
500
150



Ls: off wh-tan, fn xln, fair int xln & scat vuggy porosity, fair-good oil stn, SSFO, fair odor, scat chert-off wh, sl chally

Ls: off wh-tan, fn xln, poor int xln porosity, sl oil stn, VSSFO, sl odor

Ls: off wh-tan, fn xln, mostly DNS, NSFO

Sh: drk gry-blk

Ls: off wh-tan, fn xln, foss, poor int xln and scat int foss porosity, sl-fair oil stn, VSSFO, sl-fair odor

Ls: tan-gry, fn-sub xln, mostly DNS, NSFO

Sh: drk gry-blk

B/KC 3535' (-1503)

Sh: lt-drk gry, scat red

Ls: tan-gry, fn-sub xln, mostly DNS, scat sh: drk red

Sh: drk gry-red, soft

Sh: ala

Sh: drk gry-red, soft, scat congl: off wh, DNS, NSFO

Sh: ala

Sh: drk gry-red, soft, scat chert-off wh

Sh: ala

Sh: drk gry-brn, red, soft, scat congl: lt gry, DNS