

KANSAS CORPORATION COMMISSION
OIL & GAS CONSERVATION DIVISION

Form must be Typed
Form must be signed

TEMPORARY ABANDONMENT WELL APPLICATION

All blanks must be complete

OPERATOR: License#
Name:
Address 1:
Address 2:
City: State: Zip:
Contact Person:
Phone:
Contact Person Email:
Field Contact Person:
Field Contact Person Phone:

API No. 15-
Spot Description:
Sec. Twp. S. R.
feet from N / S Line of Section
feet from E / W Line of Section
GPS Location: Lat: , Long:
Datum: NAD27 NAD83 WGS84
County: Elevation: GL KB
Lease Name: Well #:
Well Type: Oil Gas OG WSW Other:
SWD Permit #: ENHR Permit #:
Gas Storage Permit #:
Spud Date: Date Shut-In:

Table with 7 columns: Conductor, Surface, Production, Intermediate, Liner, Tubing. Rows include Size, Setting Depth, Amount of Cement, Top of Cement, Bottom of Cement.

Casing Fluid Level from Surface: How Determined? Date:
Casing Squeeze(s): to w / sacks of cement, to w / sacks of cement. Date:
Do you have a valid Oil & Gas Lease? Yes No
Depth and Type: Junk in Hole at Tools in Hole at Casing Leaks: Yes No Depth of casing leak(s):
Type Completion: ALT. I ALT. II Depth of: DV Tool: w / sacks of cement Port Collar: w / sack of cement
Packer Type: Size: Inch Set at: Feet
Total Depth: Plug Back Depth: Plug Back Method:

Geological Date:

Table with 4 columns: Formation Name, Formation Top, Formation Base, Completion Information. Rows 1 and 2.

UNDER PENALTY OF PERJURY I HEREBY ATTEST THAT THE INFORMATION CONTAINED HEREIN IS TRUE AND CORRECT TO THE BEST OF MY KNOWLEDGE

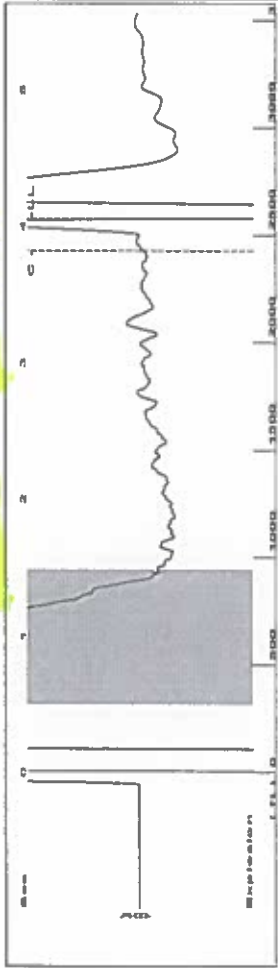
Submitted Electronically

Form with fields: Do NOT Write in This Space - KCC USE ONLY, Date Tested, Results, Date Plugged, Date Repaired, Date Put Back in Service, Review Completed by, Comments, TA Approved: Yes Denied, Date.

Mail to the Appropriate KCC Conservation Office:

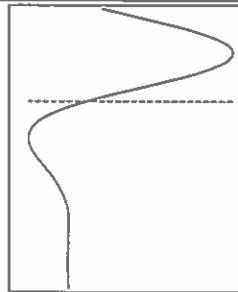
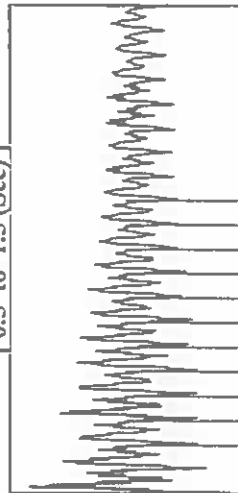
Table with 2 columns: Office Address, Phone. Rows for KCC District Office #1, #2, #3, #4.

Group: TAD Well: Garden B D-1-13 (acquired on: 05/28/17 13:57:07)



Filter Type High Pass Automatic Collar Count Yes  
 Manual Acoustic Veloc 1257.94 ft/s Manual JTS/sec 19,8413  
 Time 4.059 sec  
 Joints 81,3174 Jts  
 Depth 2577.76 ft

[ 0.5 to 1.5 (Sec) ]

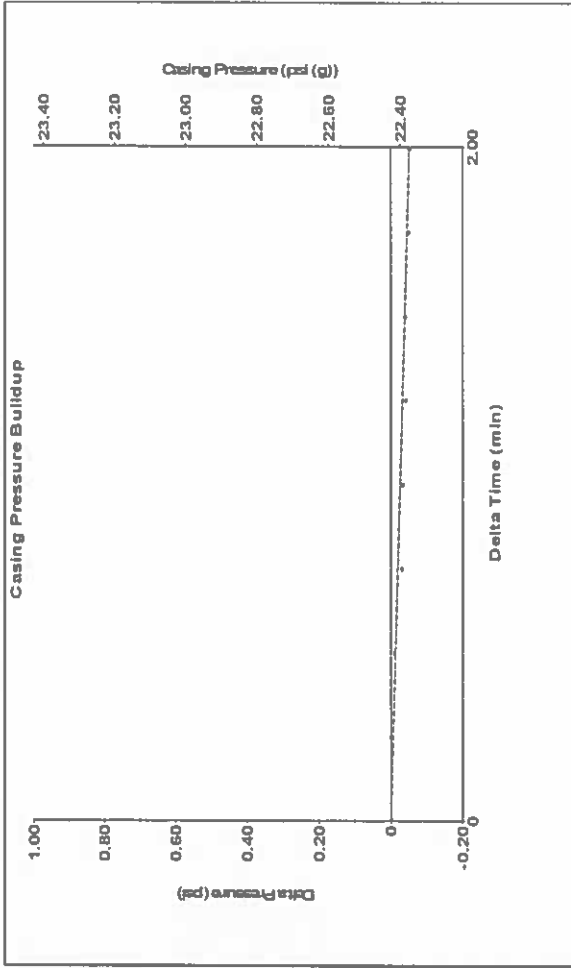


Analysis Method: Automatic

Group: TAD Well: Garden B D-1-13 (acquired on: 05/28/17 13:57:07)

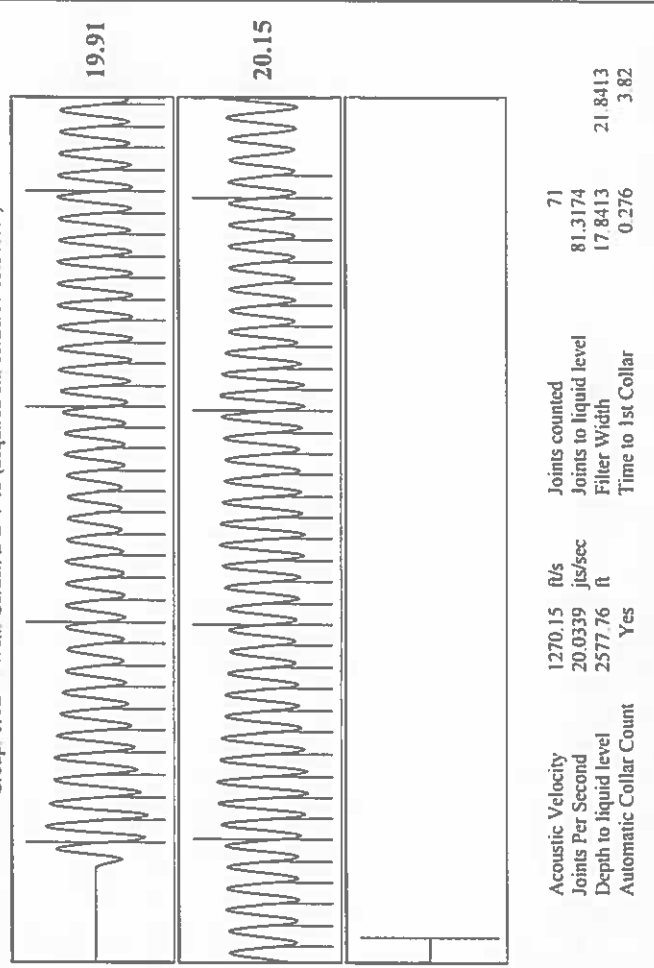
Production	Potential	Casing Pressure	Producing
Oil -*- BBL/D	22.4 psi (g)	Annular Gas Flow 0 Mscf/D	% Liquid 100 %
Water -*- BBL/D	Casing Pressure Buildup -0.052 psi		
Gas -*- Mscf/D	2.00 min		
IPR Method Vogel	Gas/Liquid Interface Pressure 24.8 psi (g)		
PBHP/SBHP -*-			
Production Efficiency 0.0			
Oil 40 deg API	Liquid Level Depth 2577.76 ft		
Water 1.05 Sp.Gr.H2O	Pump Intake Depth 2630.00 ft		
Gas 0.74 Sp.Gr.AIR	Formation Depth 2514.00 ft		
Acoustic Velocity 1270.15 ft/s			
Formation Submergence			
Total Gaseous Liquid Column HT (TVD) 52 ft			
Equivalent Gas Free Liquid HT (TVD) 52 ft			
Acoustic Test			
	Pump Intake 42.5 psi (g)		
	Producing BHP 24.8 psi (g)		
	Static BHP -*- psi (g)		

Group: TAD Well: Garden B D-1-13 (acquired on: 05/28/17 13:57:07)



Change in Pressure -0.05 psi PT8746 Range  
 Change in Time 2.00 min

Group: TAD Well: Garden B D-1-13 (acquired on: 05/28/17 13:57:07)



Acoustic Velocity 1270.15 ft/s Joints counted 71  
 Joints Per Second 20.0339 jts/sec Joints to liquid level 81,3174  
 Depth to liquid level 2577.76 ft Filler Width 17,8413  
 Automatic Collar Count Yes Time to 1st Collar 0,276  
 3,82

# STATE OF KANSAS

CORPORATION COMMISSION  
CONSERVATION DIVISION  
DISTRICT No. 1  
210 E. FRONTVIEW, SUITE A  
DODGE CITY, KS 67801



PHONE: 620-682-7933  
<http://kcc.ks.gov/>

GOVERNOR JEFF COLYER, M.D.

SHARI FEIST ALBRECHT, CHAIR | JAY SCOTT EMLER, COMMISSIONER | DWIGHT D. KEEN, COMMISSIONER

July 16, 2018

Katherine McClurkan  
Merit Energy Company, LLC  
13727 Noel Road, Suite 1200  
Dallas, TX 75240

Re: Temporary Abandonment  
API 15-093-20805-00-01  
Garden B D1-13  
NE/4 Sec.13-23S-35W  
Kearny County, Kansas

Dear Katherine McClurkan:

"Your temporary abandonment (TA) application for the well listed above has been approved. In accordance with K.A.R. 82-3-111 the TA status of this well will expire 07/16/2019.

- \* If you return this well to service or plug it, please notify the District Office.
- \* If you sell this well you are required to file a Transfer of Operator form, T-1.
- \* If the well will remain temporarily abandoned, you must submit a new TA application, CP-111, before 07/16/2019.

You may contact me at the number above if you have questions.

Very truly yours,

Michael Maier"