

KANSAS CORPORATION COMMISSION
OIL & GAS CONSERVATION DIVISION

TEMPORARY ABANDONMENT WELL APPLICATION

OPERATOR: License#
Name:
Address 1:
Address 2:
City: State: Zip:
Contact Person:
Phone:
Contact Person Email:
Field Contact Person:
Field Contact Person Phone:

API No. 15-
Spot Description:
Sec. Twp. S. R.
GPS Location: Lat: Long:
Datum: NAD27 NAD83 WGS84
County: Elevation:
Lease Name: Well #:
Well Type: Oil Gas OG WSW Other:
SWD Permit #: ENHR Permit #:
Gas Storage Permit #:
Spud Date: Date Shut-In:

Table with 7 columns: Conductor, Surface, Production, Intermediate, Liner, Tubing. Rows include Size, Setting Depth, Amount of Cement, Top of Cement, Bottom of Cement.

Casing Fluid Level from Surface: How Determined? Date:
Casing Squeeze(s): to w / sacks of cement, to w / sacks of cement. Date:
Do you have a valid Oil & Gas Lease? Yes No
Depth and Type: Junk in Hole at Tools in Hole at Casing Leaks: Yes No Depth of casing leak(s):
Type Completion: ALT. I ALT. II Depth of: DV Tool: w / sacks of cement Port Collar: w / sack of cement
Packer Type: Size: Inch Set at: Feet
Total Depth: Plug Back Depth: Plug Back Method:

Geological Data:

Table with 4 columns: Formation Name, Formation Top, Formation Base, Completion Information. Rows 1 and 2.

UNDER PENALTY OF PERJURY I HEREBY ATTEST THAT THE INFORMATION CONTAINED HEREIN IS TRUE AND CORRECT TO THE BEST OF MY KNOWLEDGE

Submitted Electronically

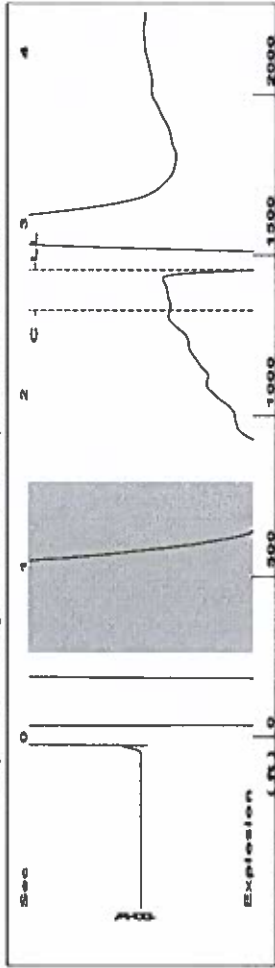
Do NOT Write in This Space - KCC USE ONLY
Date Tested: Results: Date Plugged: Date Repaired: Date Put Back in Service:
Review Completed by: Comments:
TA Approved: Yes Denied Date:

Mail to the Appropriate KCC Conservation Office:

Table with 2 columns: Office Address, Phone. Rows for District Office #1, #2, #3, #4.

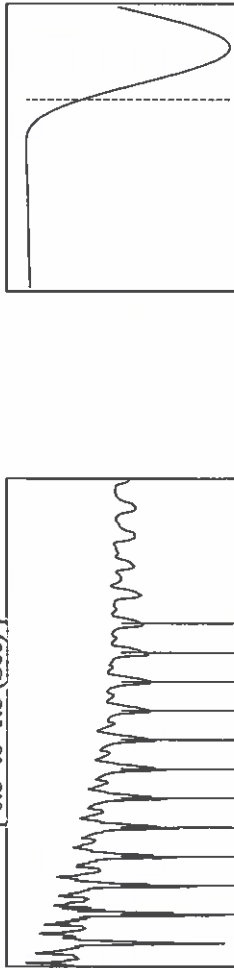


Group: TAD Well: gcc 6 - c30 -23 - 33 (acquired on: 07/12/18 12:33:36)



Filter Type High Pass Automatic Collar Count Yes  
 Manual Acoustic Velocity 1060.2 ft/s Manual JTS/sec 16.7224

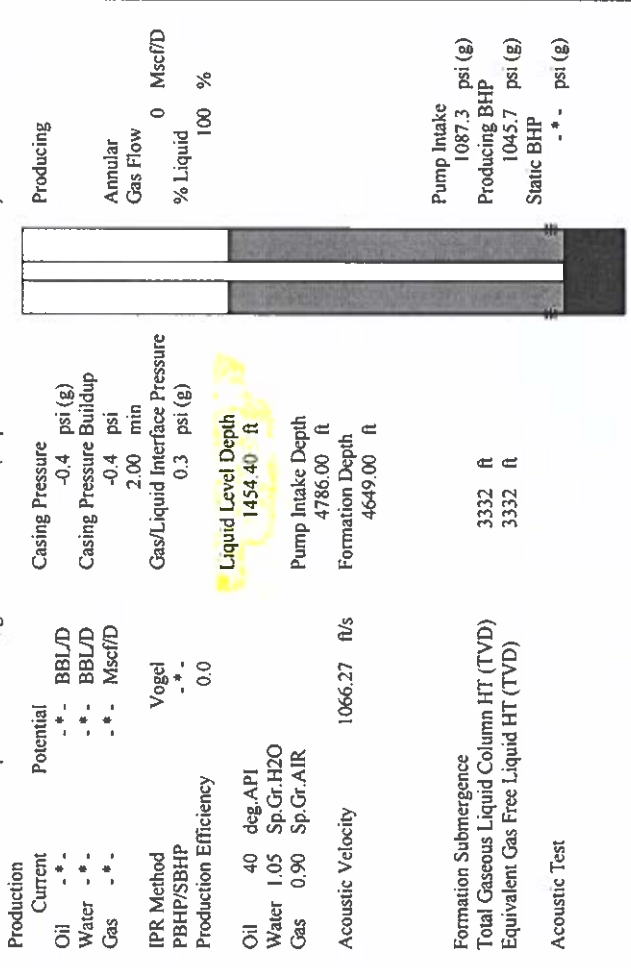
[ 0.5 to 1.5 (Sec) ]



Time 2.728 sec  
 Joints 45 88 Jts  
 Depth 1454.40 ft

**Analysis Method: Automatic**

Group: TAD Well: gcc 6 - c30 -23 - 33 (acquired on: 07/12/18 12:33:36)



Producing  
 Annular Gas Flow 0 Mscf/D  
 % Liquid 100 %  
 Pump Intake 1087.3 psi (g)  
 Producing BHP 1045.7 psi (g)  
 Static BHP - - - psi (g)

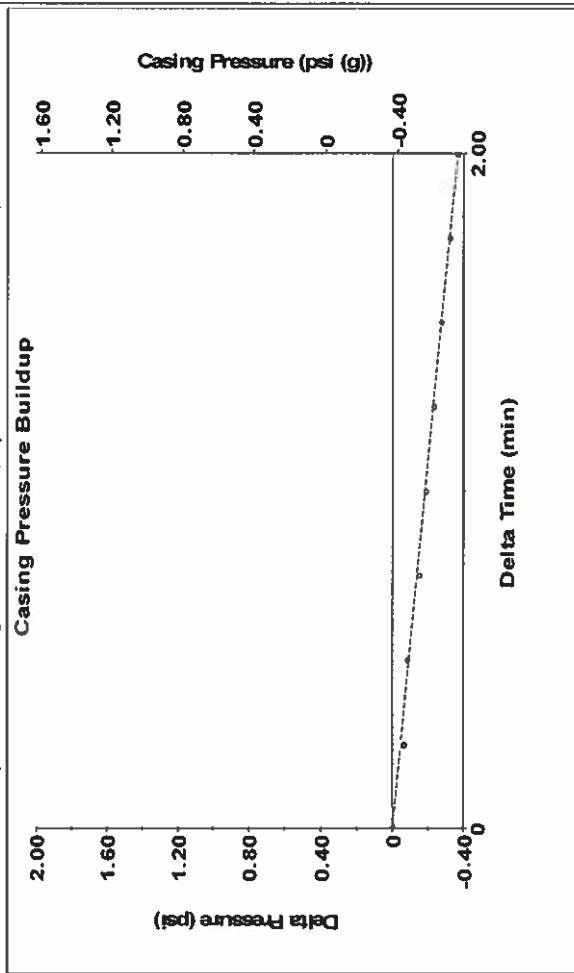
Potential - - - BBL/D Casing Pressure -0.4 psi (g)  
 - - - BBL/D Casing Pressure Buildup -0.4 psi  
 - - - Mscf/D 2.00 min  
 Vogel Gas/Liquid Interface Pressure 0.3 psi (g)  
 Production Efficiency 0.0

Oil 40 deg API Liquid Level Depth 1454.40 ft  
 Water 1.05 Sp.Gr.H2O Pump Intake Depth 4786.00 ft  
 Gas 0.90 Sp.Gr.AIR Formation Depth 4649.00 ft

Acoustic Velocity 1066.27 ft/s  
 Formation Submergence 3332 ft  
 Total Gaseous Liquid Column HT (TVD) 3332 ft  
 Equivalent Gas Free Liquid HT (TVD)

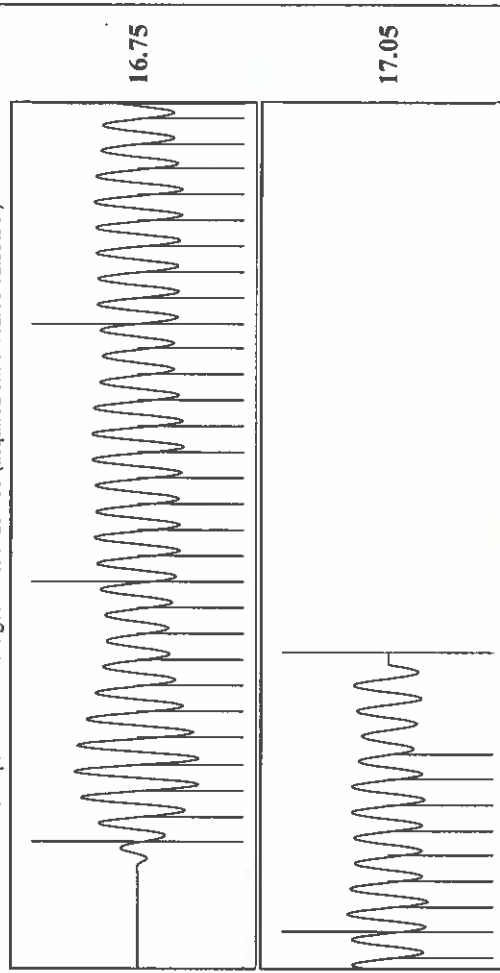
Acoustic Test  
 Acoustic Velocity 1066.27 ft/s  
 Joints Per Second 16.8182 jts/sec  
 Depth to liquid level 1454.4 ft  
 Automatic Collar Count Yes  
 Joints counted 37  
 Joints to liquid level 45.88  
 Filter Width 14.7224  
 Time to 1st Collar 0.292

Group: TAD Well: gcc 6 - c30 -23 - 33 (acquired on: 07/12/18 12:33:36)



Change in Pressure -0.37 psi PTI3865 Range  
 Change in Time 2.00 min

Group: TAD Well: gcc 6 - c30 -23 - 33 (acquired on: 07/12/18 12:33:36)



Acoustic Velocity 1066.27 ft/s  
 Joints Per Second 16.8182 jts/sec  
 Depth to liquid level 1454.4 ft  
 Automatic Collar Count Yes  
 Joints counted 37  
 Joints to liquid level 45.88  
 Filter Width 14.7224  
 Time to 1st Collar 0.292

# STATE OF KANSAS

CORPORATION COMMISSION  
CONSERVATION DIVISION  
DISTRICT No. 1  
210 E. FRONTVIEW, SUITE A  
DODGE CITY, KS 67801



PHONE: 620-682-7933  
<http://kcc.ks.gov/>

GOVERNOR JEFF COLYER, M.D.

SHARI FEIST ALBRECHT, CHAIR | JAY SCOTT EMLER, COMMISSIONER | DWIGHT D. KEEN, COMMISSIONER

July 16, 2018

Katherine McClurkan  
Merit Energy Company, LLC  
13727 Noel Road, Suite 1200  
Dallas, TX 75240

Re: Temporary Abandonment  
API 15-055-21922-00-00  
GCC 6-C30-23-33  
NW/4 Sec.30-23S-33W  
Finney County, Kansas

Dear Katherine McClurkan:

"Your temporary abandonment (TA) application for the well listed above has been approved. In accordance with K.A.R. 82-3-111 the TA status of this well will expire 07/16/2019.

- \* If you return this well to service or plug it, please notify the District Office.
- \* If you sell this well you are required to file a Transfer of Operator form, T-1.
- \* If the well will remain temporarily abandoned, you must submit a new TA application, CP-111, before 07/16/2019.

You may contact me at the number above if you have questions.

Very truly yours,

Michael Maier"