

KANSAS CORPORATION COMMISSION
OIL & GAS CONSERVATION DIVISION

TEMPORARY ABANDONMENT WELL APPLICATION

OPERATOR: License#
Name:
Address 1:
Address 2:
City: State: Zip:
Contact Person:
Phone:
Contact Person Email:
Field Contact Person:
Field Contact Person Phone:

API No. 15-
Spot Description:
Sec. Twp. S. R.
GPS Location: Lat: Long:
Datum: NAD27 NAD83 WGS84
County: Elevation:
Lease Name: Well #:
Well Type: Oil Gas OG WSW Other:
SWD Permit #: ENHR Permit #:
Gas Storage Permit #:
Spud Date: Date Shut-In:

Table with 7 columns: Conductor, Surface, Production, Intermediate, Liner, Tubing. Rows include Size, Setting Depth, Amount of Cement, Top of Cement, Bottom of Cement.

Casing Fluid Level from Surface: How Determined? Date:
Casing Squeeze(s): to w / sacks of cement, to w / sacks of cement. Date:
Do you have a valid Oil & Gas Lease? Yes No
Depth and Type: Junk in Hole at Tools in Hole at Casing Leaks: Yes No Depth of casing leak(s):
Type Completion: ALT. I ALT. II Depth of: DV Tool: w / sacks of cement Port Collar: w / sack of cement
Packer Type: Size: Inch Set at: Feet
Total Depth: Plug Back Depth: Plug Back Method:

Geological Data:

Table with 4 columns: Formation Name, Formation Top, Formation Base, Completion Information. Rows 1 and 2.

UNDER PENALTY OF PERJURY I HEREBY ATTEST THAT THE INFORMATION CONTAINED HEREIN IS TRUE AND CORRECT TO THE BEST OF MY KNOWLEDGE

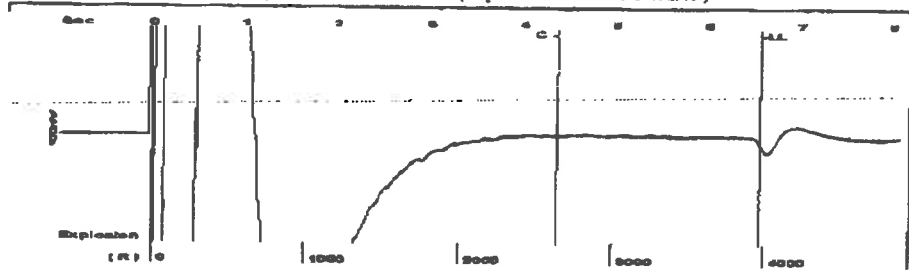
Submitted Electronically

Do NOT Write in This Space - KCC USE ONLY
Date Tested: Results: Date Plugged: Date Repaired: Date Put Back in Service:
Review Completed by: Comments:
TA Approved: Yes Denied Date:

Mail to the Appropriate KCC Conservation Office:

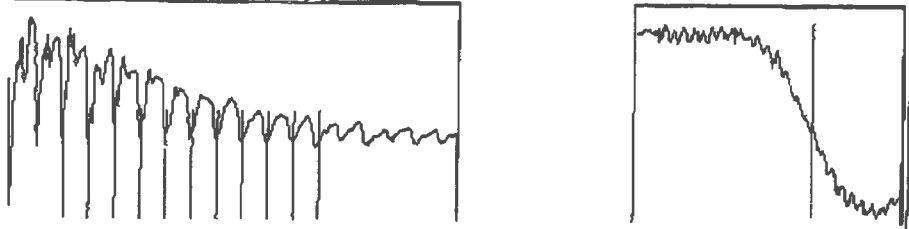
Table with 3 columns: District Office, Address, Phone. Rows for District Office #1, #2, #3, #4.

Group: Belgre Well: Scharz 2-12 (acquired on: 07/24/18 10:02:46)



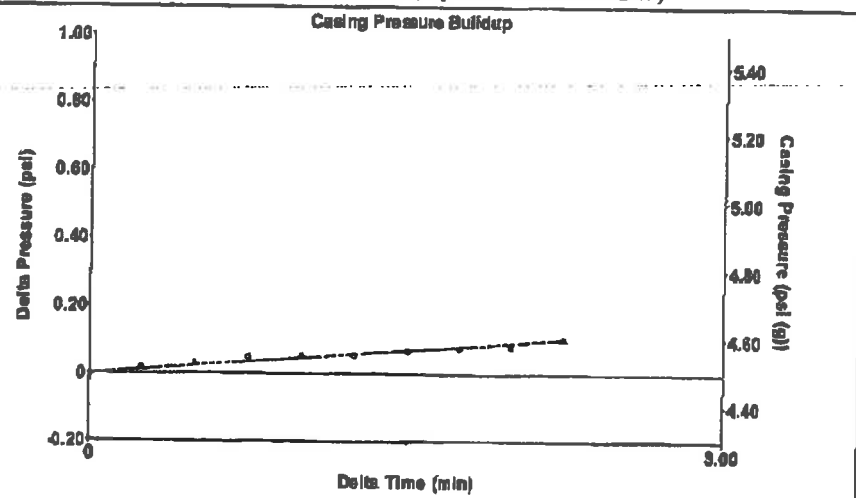
Filter Type High Pass Automatic Collar Count Yes Time 6.568 sec  
 Manual Acoustic Veloc 161.43 ft/s Manual JTS/sec 17.8571 Joints 122.225 fts  
 Depth 3974.77 ft

[ 0.5 to 1.5 (Sec) ]



Analysis Method: Automatic

Group: Belgre Well: Scharz 2-12 (acquired on: 07/24/18 10:02:46)

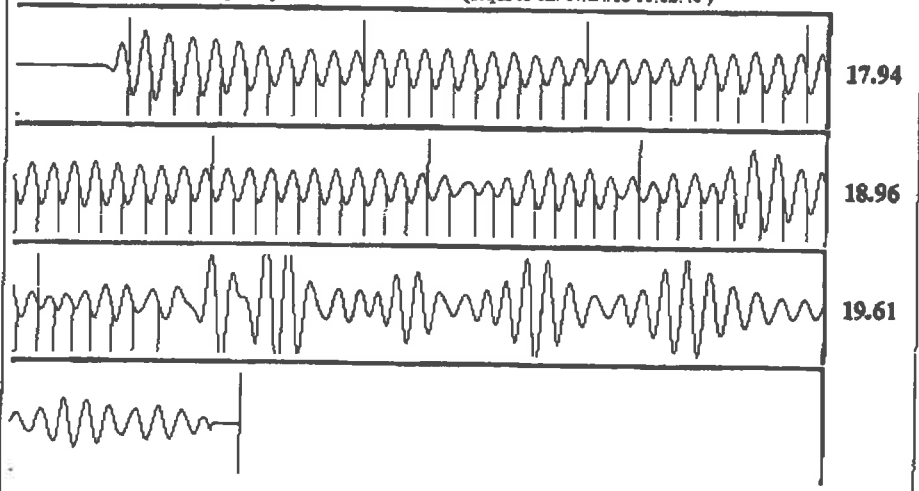


Change in Pressure 0.10 psi PT13440  
 Change in Time 2.25 min Range 0.7 psi

Group: Belgre Well: Scharz 2-12 (acquired on: 07/24/18 10:02:46)

<p>Production Current</p> <p>Oil -.-</p> <p>Water -.-</p> <p>Gas -.-</p> <p>IPR Method PBHP/SBHP</p> <p>Production Efficiency 0.0</p> <p>Oil 40 deg.APT</p> <p>Water 1.05 Sp.Gr.H2O</p> <p>Gas 0.79 Sp.Gr.AIR</p> <p>Acoustic Velocity 1210.34 ft/s</p> <p>Formation Submergence</p> <p>Total Gaseous Liquid Column HT (TVD) 385 ft</p> <p>Equivalent Gas Free Liquid HT (TVD) 356 ft</p> <p>Acoustic Test</p>	<p>Potential</p> <p>-.- BBL/D</p> <p>-.- BBL/D</p> <p>-.- Msc/D</p> <p>Vogel</p> <p>-.-</p>	<p>Casing Pressure 4.3 psi (g)</p> <p>Casing Pressure Buildup 0.101 psi</p> <p>2.25 min</p> <p>Gas/Liquid Interface Pressure 6.6 psi (g)</p> <p>Liquid Level Depth 3974.77 ft</p> <p>Pump Intake Depth 4360.00 ft</p> <p>Formation Depth 4273.00 ft</p>	<p>Producing</p> <p>Annular Gas Flow 1 Msc/D</p> <p>% Liquid 90 %</p> <p>Pump Intake 127.3 psi (g)</p> <p>Producing BHP 97.9 psi (g)</p> <p>Static BHP -.- psi (g)</p>
--	---	---	--

Group: Belgre Well: Scharz 2-12 (acquired on: 07/24/18 10:02:46)



Acoustic Velocity 1210.34 ft/s Joints counted 76  
 Joints Per Second 18.6092 jts/sec Joints to liquid level 122.225  
 Depth to liquid level 3974.77 ft Filter Width 15.8571 19.8571  
 Automatic Collar Count Yes Time to 1st Collar 0.28 4.364

# STATE OF KANSAS

CORPORATION COMMISSION  
CONSERVATION DIVISION  
DISTRICT No. 1  
210 E. FRONTVIEW, SUITE A  
DODGE CITY, KS 67801



PHONE: 620-682-7933  
<http://kcc.ks.gov/>

GOVERNOR JEFF COLYER, M.D.

SHARI FEIST ALBRECHT, CHAIR | JAY SCOTT EMLER, COMMISSIONER | DWIGHT D. KEEN, COMMISSIONER

July 26, 2018

Franklin R. Greenbaum  
F. G. Holl Company L.L.C.  
9431 E CENTRAL STE 100  
WICHITA, KS 67206-2563

Re: Temporary Abandonment  
API 15-047-20733-00-00  
SCHARTZ 2-12  
SW/4 Sec.12-24S-17W  
Edwards County, Kansas

Dear Franklin R. Greenbaum:

"Your temporary abandonment (TA) application for the well listed above has been approved. In accordance with K.A.R. 82-3-111 the TA status of this well will expire 07/26/2019.

- \* If you return this well to service or plug it, please notify the District Office.
- \* If you sell this well you are required to file a Transfer of Operator form, T-1.
- \* If the well will remain temporarily abandoned, you must submit a new TA application, CP-111, before 07/26/2019.

You may contact me at the number above if you have questions.

Very truly yours,

Michael Maier"