

KANSAS CORPORATION COMMISSION
OIL & GAS CONSERVATION DIVISION

TEMPORARY ABANDONMENT WELL APPLICATION

OPERATOR: License#
Name:
Address 1:
Address 2:
City: State: Zip:
Contact Person:
Phone:
Contact Person Email:
Field Contact Person:
Field Contact Person Phone:

API No. 15-
Spot Description:
Sec. Twp. S. R.
feet from N / S Line of Section
feet from E / W Line of Section
GPS Location: Lat: , Long:
Datum: NAD27 NAD83 WGS84
County: Elevation: GL KB
Lease Name: Well #:
Well Type: (check one) Oil Gas OG WSW Other:
SWD Permit #: ENHR Permit #:
Gas Storage Permit #:
Spud Date: Date Shut-In:

Table with 7 columns: Conductor, Surface, Production, Intermediate, Liner, Tubing. Rows include Size, Setting Depth, Amount of Cement, Top of Cement, Bottom of Cement.

Casing Fluid Level from Surface: How Determined? Date:
Casing Squeeze(s): to w / sacks of cement, to w / sacks of cement. Date:
Do you have a valid Oil & Gas Lease? Yes No
Depth and Type: Junk in Hole at Tools in Hole at Casing Leaks: Yes No Depth of casing leak(s):
Type Completion: ALT. I ALT. II Depth of: DV Tool: w / sacks of cement Port Collar: w / sack of cement
Packer Type: Size: Inch Set at: Feet
Total Depth: Plug Back Depth: Plug Back Method:

Geological Data:

Table with 4 columns: Formation Name, Formation Top, Formation Base, Completion Information. Rows 1 and 2.

UNDER PENALTY OF PERJURY I HEREBY ATTEST THAT THE INFORMATION CONTAINED HEREIN IS TRUE AND CORRECT TO THE BEST OF MY KNOWLEDGE

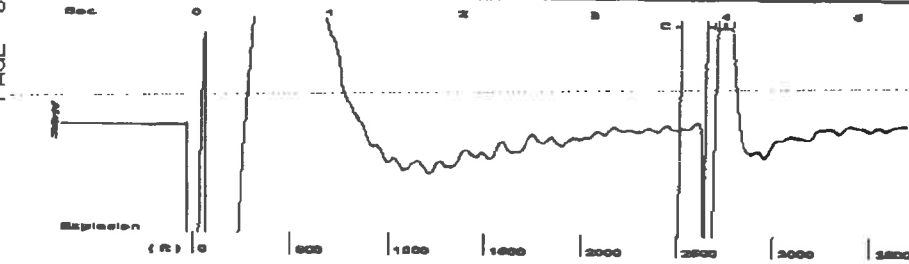
Submitted Electronically

Do NOT Write in This Space - KCC USE ONLY
Date Tested: Results: Date Plugged: Date Repaired: Date Put Back in Service:
Review Completed by: Comments:
TA Approved: Yes Denied Date:

Mail to the Appropriate KCC Conservation Office:

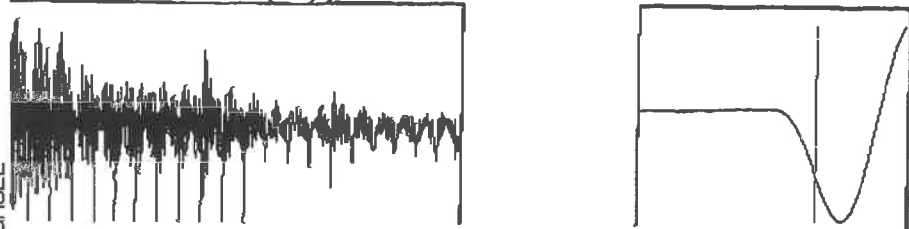
Table with 3 columns: District Office, Address, Phone. Rows for District Office #1, #2, #3, #4.

Group: Belpre Well: Aldrich B 2-32 (acquired on: 07/24/18 10:38:30)



Filter Type High Pass Automatic Collar Count Yes Time 3.868 sec
 Manual Acoustic Velocity 1354.7 ft/s Manual JTS/sec 21.3675 Joints 83.4409 Jts
 Depth 2645.08 ft

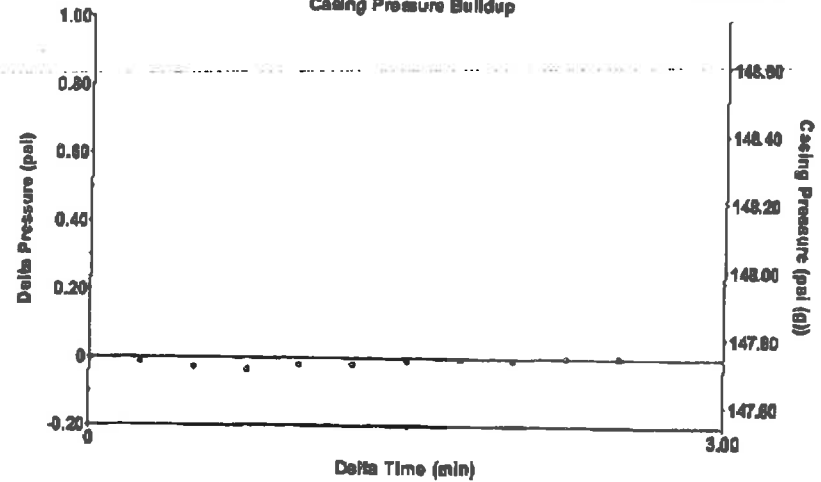
[0.5 to 1.5 (Sec)]



Analysis Method: Automatic

Group: Belpre Well: Aldrich B 2-32 (acquired on: 07/24/18 10:38:30)

Casing Pressure Buildup



Change in Pressure 0.00 psi FT13440
 Change in Time 2.50 min Range 0 - 7 psi

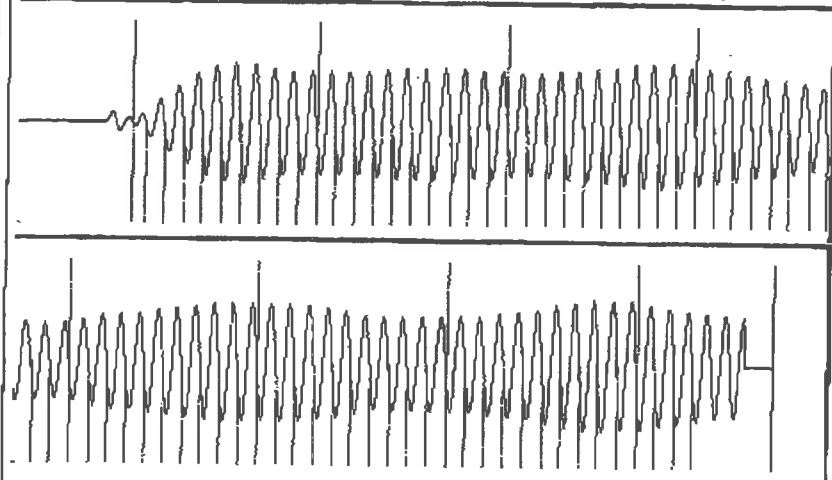
Group: Belpre Well: Aldrich B 2-32 (acquired on: 07/24/18 10:38:30)

Production	Potential	Casing Pressure	Producing
Oil -.-	-.- BBL/D	147.7 psi (g)	
Water -.-	-.- BBL/D	Casing Pressure Buildup	
Gas -.-	-.- Mscf/D	0.001 psi	
		2.50 min	
IPR Method	Vogel	Gas/Liquid Interface Pressure	Annular Gas Flow
PBHP/SBHP	-.-	157.3 psi (g)	0 Mscf/D
Production Efficiency	0.0		% Liquid
			100 %
Oil 40 deg API		Liquid Level Depth	
Water 1.05 Sp.Gr.H2O		2645.08 ft	
Gas 0.63 Sp.Gr.AIR		Pump Intake Depth	
		-.- ft	
Acoustic Velocity	1367.67 ft/s	Formation Depth	
		4308.00 ft	



Pump Intake -.- psi (g)
 Producing BHP 913.4 psi (g)
 Static BHP -.- psi (g)

Group: Belpre Well: Aldrich B 2-32 (acquired on: 07/24/18 10:38:30)



21.61

21.53

Acoustic Velocity 1367.67 ft/s Joints counted 73
 Joints Per Second 21.5721 jts/sec Joints to liquid level 83.4409
 Depth to liquid level 2645.08 ft Filter Width 193675 21.3675
 Automatic Collar Count Yes Time to 1st Collar 0.284 3.668

Formation Submergence
 Total Gaseous Liquid Column HT (TVD) 1663 ft
 Equivalent Gas Free Liquid HT (TVD) 1663 ft

Acoustic Test

STATE OF KANSAS

CORPORATION COMMISSION
CONSERVATION DIVISION
DISTRICT No. 1
210 E. FRONTVIEW, SUITE A
DODGE CITY, KS 67801



PHONE: 620-682-7933
<http://kcc.ks.gov/>

GOVERNOR JEFF COLYER, M.D.

SHARI FEIST ALBRECHT, CHAIR | JAY SCOTT EMLER, COMMISSIONER | DWIGHT D. KEEN, COMMISSIONER

July 26, 2018

Franklin R. Greenabum
F. G. Holl Company L.L.C.
9431 E CENTRAL STE 100
WICHITA, KS 67206-2563

Re: Temporary Abandonment
API 15-145-21283-00-00
ALDRICH B 2-32
NE/4 Sec.32-23S-17W
Pawnee County, Kansas

Dear Franklin R. Greenabum:

"Your temporary abandonment (TA) application for the well listed above has been approved. In accordance with K.A.R. 82-3-111 the TA status of this well will expire 07/26/2019.

- * If you return this well to service or plug it, please notify the District Office.
- * If you sell this well you are required to file a Transfer of Operator form, T-1.
- * If the well will remain temporarily abandoned, you must submit a new TA application, CP-111, before 07/26/2019.

You may contact me at the number above if you have questions.

Very truly yours,

Michael Maier"