

KANSAS CORPORATION COMMISSION
OIL & GAS CONSERVATION DIVISION

TEMPORARY ABANDONMENT WELL APPLICATION

OPERATOR: License#
Name:
Address 1:
Address 2:
City: State: Zip:
Contact Person:
Phone:
Contact Person Email:
Field Contact Person:
Field Contact Person Phone:

API No. 15-
Spot Description:
Sec. Twp. S. R.
GPS Location: Lat, Long
Datum: NAD27, NAD83, WGS84
County: Elevation:
Lease Name: Well #:
Well Type: Oil, Gas, OG, WSW, Other
SWD Permit #: ENHR Permit #:
Gas Storage Permit #:
Spud Date: Date Shut-In:

Table with 7 columns: Conductor, Surface, Production, Intermediate, Liner, Tubing. Rows include Size, Setting Depth, Amount of Cement, Top of Cement, Bottom of Cement.

Casing Fluid Level from Surface: How Determined? Date:
Casing Squeeze(s): to w / sacks of cement, to w / sacks of cement. Date:
Do you have a valid Oil & Gas Lease? Yes No
Depth and Type: Junk in Hole at Tools in Hole at Casing Leaks: Yes No Depth of casing leak(s):
Type Completion: ALT. I ALT. II Depth of: DV Tool: w / sacks of cement Port Collar: w / sack of cement
Packer Type: Size: Inch Set at: Feet
Total Depth: Plug Back Depth: Plug Back Method:

Geological Data:

Table with 4 columns: Formation Name, Formation Top, Formation Base, Completion Information. Rows 1 and 2.

UNDER PENALTY OF PERJURY I HEREBY ATTEST THAT THE INFORMATION CONTAINED HEREIN IS TRUE AND CORRECT TO THE BEST OF MY KNOWLEDGE

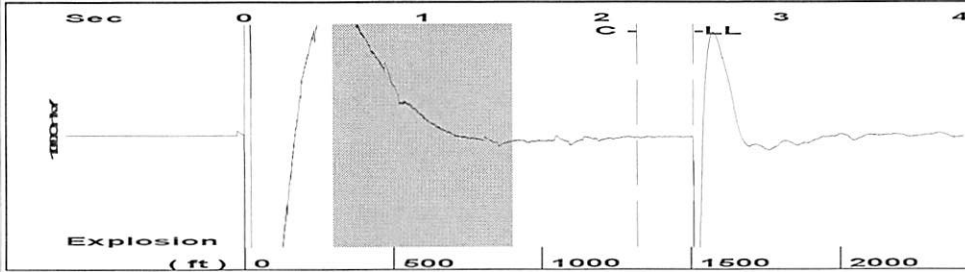
Submitted Electronically

Do NOT Write in This Space - KCC USE ONLY
Date Tested: Results: Date Plugged: Date Repaired: Date Put Back in Service:
Review Completed by: Comments:
TA Approved: Yes Denied Date:

Mail to the Appropriate KCC Conservation Office:

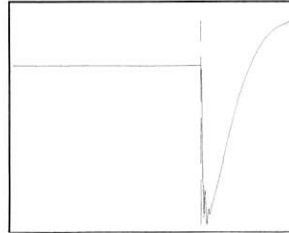
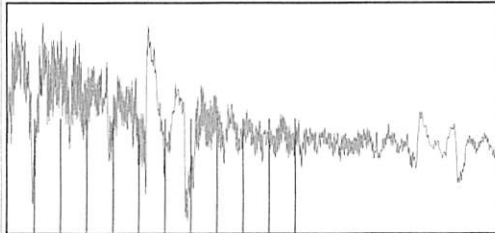
Table with 3 columns: District Office #, Address, Phone. Rows 1-4.

Group: 3G Production, LLC Well: Gibson (acquired on: 07/16/18 10:54:45 )



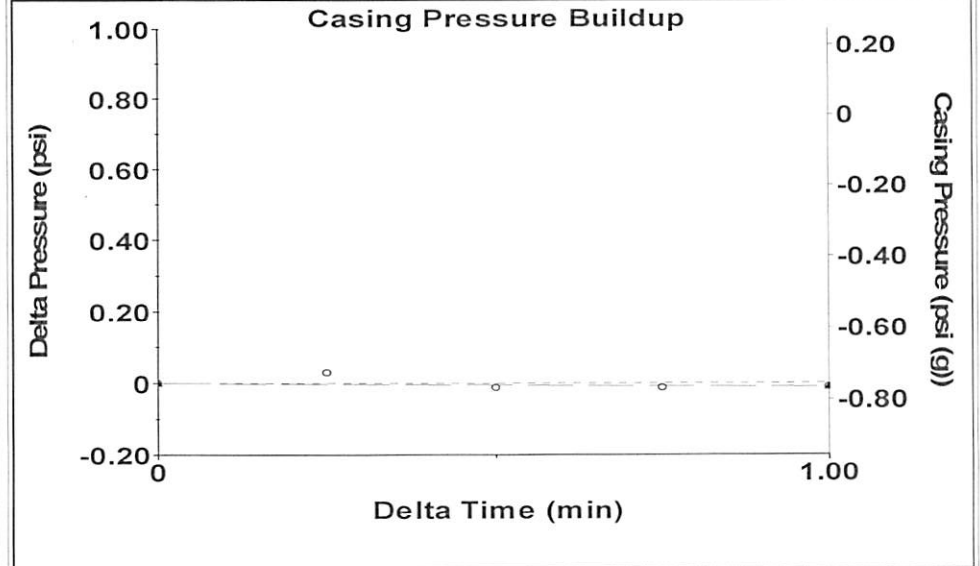
Filter Type High Pass Automatic Collar Count Yes Time 2.508 sec  
 Manual Acoustic Velo 1189.49 ft/s Manual JTS/sec 18.7617 Joints 47.5848 Jts  
 Depth 1508.44 ft

[ 0.5 to 1.5 (Sec) ]



Analysis Method: Automatic

Group: 3G Production, LLC Well: Gibson (acquired on: 07/16/18 10:54:45 )



Change in Pressure -0.01 psi PT15469  
 Range 0 - ? psi  
 Change in Time 1.00 min

Group: 3G Production, LLC Well: Gibson (acquired on: 07/16/18 10:54:45 )

Production  
 Current Potential  
 Oil - \* - BBL/D  
 Water - \* - BBL/D  
 Gas - \* - Mscf/D  
 IPR Method Vogel  
 PBHP/SBHP - \* -  
 Production Efficiency 0.0

Oil 40 deg.API  
 Water 1.05 Sp.Gr.H2O  
 Gas 0.78 Sp.Gr.AIR

Acoustic Velocity 1202.9 ft/s

Formation Submergence  
 Total Gaseous Liquid Column HT (TVD) 2292 ft  
 Equivalent Gas Free Liquid HT (TVD) 2292 ft

Acoustic Test

Casing Pressure -0.8 psi (g)  
 Casing Pressure Buildup -0.011 psi  
 1.00 min  
 Gas/Liquid Interface Pressure -0.2 psi (g)

Liquid Level Depth 1508.44 ft

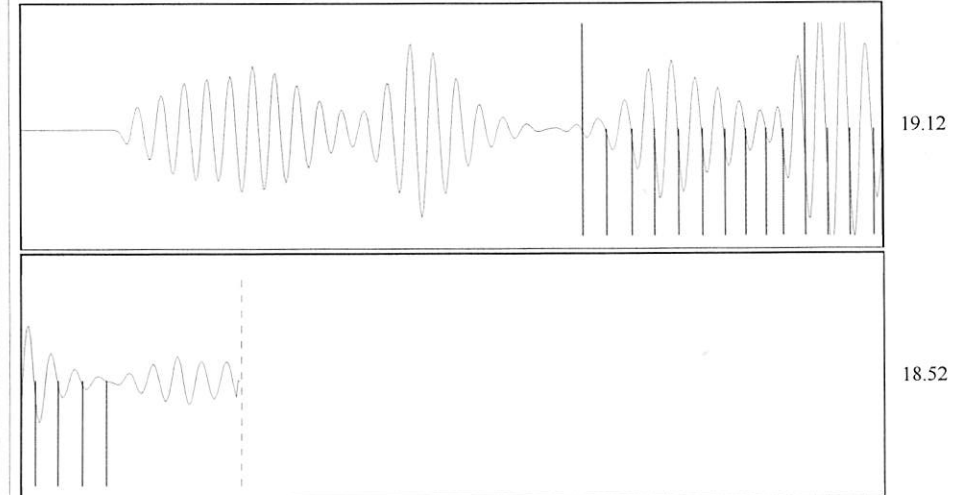
Tubing Intake Depth 3800.00 ft  
 Formation Depth 3800.00 ft

Producing  
 Casing % Liquid 100 %

Tubing Intake 1041.7 psi (g)  
 Producing BHP 1041.7 psi (g)  
 Static BHP - \* - psi (g)



Group: 3G Production, LLC Well: Gibson (acquired on: 07/16/18 10:54:45 )



Acoustic Velocity 1202.9 ft/s Joints counted 17  
 Joints Per Second 18.9732 jts/sec Joints to liquid level 47.5848  
 Depth to liquid level 1508.44 ft Filter Width 16.7617 20.7617  
 Automatic Collar Count Yes Time to 1st Collar 1.3 2.196

# STATE OF KANSAS

CORPORATION COMMISSION  
CONSERVATION DIVISION  
DISTRICT No. 1  
210 E. FRONTVIEW, SUITE A  
DODGE CITY, KS 67801



PHONE: 620-682-7933  
<http://kcc.ks.gov/>

GOVERNOR JEFF COLYER, M.D.

SHARI FEIST ALBRECHT, CHAIR | JAY SCOTT EMLER, COMMISSIONER | DWIGHT D. KEEN, COMMISSIONER

July 26, 2018

Kenneth C Gates  
3G Production, LLC  
10387 NE SR 61  
PO BOX 847  
PRATT, KS 67124

Re: Temporary Abandonment  
API 15-047-21074-00-00  
GIBSON A1  
NE/4 Sec.34-25S-16W  
Edwards County, Kansas

Dear Kenneth C Gates:

"Your temporary abandonment (TA) application for the well listed above has been approved. In accordance with K.A.R. 82-3-111 the TA status of this well will expire 07/26/2019.

- \* If you return this well to service or plug it, please notify the District Office.
- \* If you sell this well you are required to file a Transfer of Operator form, T-1.
- \* If the well will remain temporarily abandoned, you must submit a new TA application, CP-111, before 07/26/2019.

You may contact me at the number above if you have questions.

Very truly yours,

Michael Maier"