

KANSAS CORPORATION COMMISSION
OIL & GAS CONSERVATION DIVISION

TEMPORARY ABANDONMENT WELL APPLICATION

OPERATOR: License# \_\_\_\_\_
Name: \_\_\_\_\_
Address 1: \_\_\_\_\_
Address 2: \_\_\_\_\_
City: \_\_\_\_\_ State: \_\_\_\_\_ Zip: \_\_\_\_\_ + \_\_\_\_\_
Contact Person: \_\_\_\_\_
Phone:( \_\_\_\_\_ ) \_\_\_\_\_
Contact Person Email: \_\_\_\_\_
Field Contact Person: \_\_\_\_\_
Field Contact Person Phone: ( \_\_\_\_\_ ) \_\_\_\_\_

API No. 15- \_\_\_\_\_
Spot Description: \_\_\_\_\_
- - - - - Sec. \_\_\_\_\_ Twp. \_\_\_\_\_ S. R. \_\_\_\_\_ E W
\_\_\_\_\_ feet from N / S Line of Section
\_\_\_\_\_ feet from E / W Line of Section
GPS Location: Lat: \_\_\_\_\_, Long: \_\_\_\_\_
Datum: NAD27 NAD83 WGS84
County: \_\_\_\_\_ Elevation: \_\_\_\_\_ GL KB
Lease Name: \_\_\_\_\_ Well #: \_\_\_\_\_
Well Type: (check one) Oil Gas OG WSW Other: \_\_\_\_\_
SWD Permit #: \_\_\_\_\_ ENHR Permit #: \_\_\_\_\_
Gas Storage Permit #: \_\_\_\_\_
Spud Date: \_\_\_\_\_ Date Shut-In: \_\_\_\_\_

Table with 7 columns: Conductor, Surface, Production, Intermediate, Liner, Tubing. Rows include Size, Setting Depth, Amount of Cement, Top of Cement, Bottom of Cement.

Casing Fluid Level from Surface: \_\_\_\_\_ How Determined? \_\_\_\_\_ Date: \_\_\_\_\_
Casing Squeeze(s): \_\_\_\_\_ to \_\_\_\_\_ w / \_\_\_\_\_ sacks of cement, \_\_\_\_\_ to \_\_\_\_\_ w / \_\_\_\_\_ sacks of cement. Date: \_\_\_\_\_
Do you have a valid Oil & Gas Lease? Yes No
Depth and Type: Junk in Hole at \_\_\_\_\_ Tools in Hole at \_\_\_\_\_ Casing Leaks: Yes No Depth of casing leak(s): \_\_\_\_\_
Type Completion: ALT. I ALT. II Depth of: DV Tool: \_\_\_\_\_ w / \_\_\_\_\_ sacks of cement Port Collar: \_\_\_\_\_ w / \_\_\_\_\_ sack of cement
Packer Type: \_\_\_\_\_ Size: \_\_\_\_\_ Inch Set at: \_\_\_\_\_ Feet
Total Depth: \_\_\_\_\_ Plug Back Depth: \_\_\_\_\_ Plug Back Method: \_\_\_\_\_

Geological Date:

Table with 4 columns: Formation Name, Formation Top, Formation Base, Completion Information. Rows 1 and 2.

UNDER PENALTY OF PERJURY I HEREBY ATTEST THAT THE INFORMATION CONTAINED HEREIN IS TRUE AND CORRECT TO THE BEST OF MY KNOWLEDGE

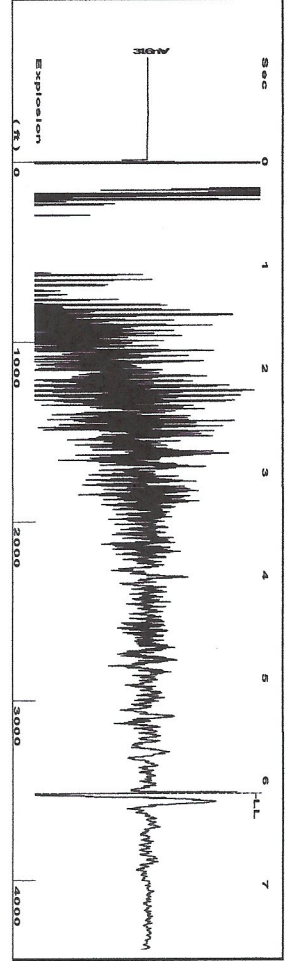
Submitted Electronically

Do NOT Write in This Space - KCC USE ONLY
Date Tested: \_\_\_\_\_ Results: \_\_\_\_\_ Date Plugged: \_\_\_\_\_ Date Repaired: \_\_\_\_\_ Date Put Back in Service: \_\_\_\_\_
Review Completed by: \_\_\_\_\_ Comments: \_\_\_\_\_
TA Approved: Yes Denied Date: \_\_\_\_\_

Mail to the Appropriate KCC Conservation Office:

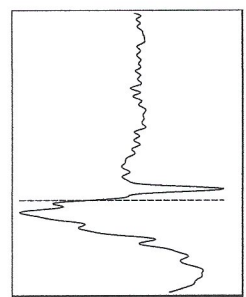
Table with 3 columns: District Office #, Address, Phone. Rows 1-4.

Group: Gra Ex, LLC Well: Chappell #1 (acquired on: 08/21/18 14:17:30)



Time 6.12 sec  
 Joints 111.009 J/s  
 Depth 3519.00 ft

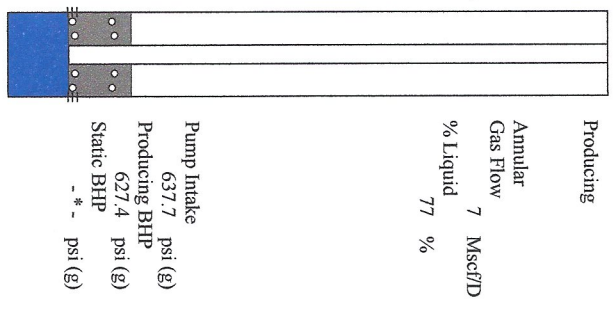
Liquid level calculated with  
 user supplied Acoustic Velocity  
 Acoustic Velocity 1150 ft/s



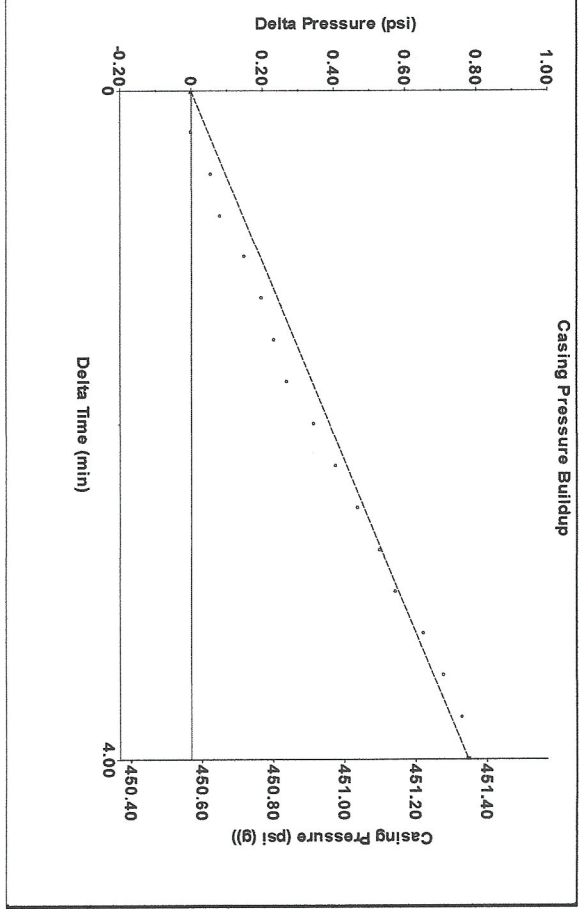
**Analysis Method: Acoustic Velocity**

Group: Gra Ex, LLC Well: Chappell #1 (acquired on: 08/21/18 14:17:30)

Production	Potential	Casing Pressure	Producing
Current	-*- BBL/D	450.6 psi (g)	Annular
Oil	-*- BBL/D	0.8 psi	Gas Flow
Water	-*- Mscf/D	4.00 min	% Liquid
Gas	-*- Mscf/D	500.8 psi (g)	77 %
IPR Method	Vogel	Gas/Liquid Interface Pressure	
PBHP/SBHP	-*-		
Production Efficiency	0.0	Liquid Level Depth	
		3519.00 ft	
Oil	40 deg API	Pump Intake Depth	
Water	1.05 Sp Gr H2O	4055.00 ft	
Gas	0.79 Sp Gr AIR	Formation Depth	
		4023.00 ft	
Acoustic Velocity	1150 ft/s		
Formation Submergence			
Total Gaseous Liquid Column HT (TVD)		536 ft	
Equivalent Gas Free Liquid HT (TVD)		422 ft	



Group: Gra Ex, LLC Well: Chappell #1 (acquired on: 08/21/18 14:17:30)



Group: Gra Ex, LLC Well: Chappell #1 (acquired on: 08/21/18 14:17:30)

**Entered Acoustic Velocity for Liquid Level determination**

# STATE OF KANSAS

CORPORATION COMMISSION  
CONSERVATION DIVISION  
DISTRICT No. 1  
210 E. FRONTVIEW, SUITE A  
DODGE CITY, KS 67801



PHONE: 620-682-7933  
<http://kcc.ks.gov/>

GOVERNOR JEFF COLYER, M.D.

SHARI FEIST ALBRECHT, CHAIR | JAY SCOTT EMLER, COMMISSIONER | DWIGHT D. KEEN, COMMISSIONER

August 28, 2018

Don Graber  
Gra Ex, LLC  
2435 N MARQUETTE  
PO BOX 32  
KINGMAN, KS 67068-1066

Re: Temporary Abandonment  
API 15-185-23495-00-00  
CHAPPELL 1  
NW/4 Sec.02-25S-14W  
Stafford County, Kansas

Dear Don Graber:

"Your temporary abandonment (TA) application for the well listed above has been approved. In accordance with K.A.R. 82-3-111 the TA status of this well will expire 08/28/2019.

- \* If you return this well to service or plug it, please notify the District Office.
- \* If you sell this well you are required to file a Transfer of Operator form, T-1.
- \* If the well will remain temporarily abandoned, you must submit a new TA application, CP-111, before 08/28/2019.

You may contact me at the number above if you have questions.

Very truly yours,

Michael Maier"