

DEUTSCH OIL COMPANY  
 CLARK-FRALEY LEASE  
 SE.1/4, SECTION 5, T26S, R11W  
 PRATT COUNTY, KANSAS

\*Ingress and egress to location as shown on this plat is for usage only and may not be legally opened for public use. Contact landowner, tenant and county road department for access.

**Notes:**

1. Set (2) wood stakes at location site.
2. All flagging Red & Yellow.
3. Overhead power available at N., S., E. & W. lines, Sec.5.
4. Kansas One Call System Inc. should be notified before excavation (1-800-344-7233).
5. CAUTION: Various pipelines in Sec.5.
6. Section 5 is irregular N-S.
7. Contact landowner for best access.
8. Location fell in the backyard of an abandoned farmstead, set (2) alternates per instructions. Both alternates fell 100' from farmstead fences.

**\*Drillsite Location**

Clark-Fraley #1-5  
 NE SE SE  
 990'FSL 330'FEL  
 Ground Elevation = 1848 - 5

Y = 415686 X = 1988672

State Plane-NAD 27-Kansas South

Latitude 37.80837 Longitude -98.53965  
 WGS 84-NAD 83  
 (400' North of Loc.)

**\*Alternate Location (1)**

1390'FSL 330'FEL  
 Ground Elevation = 1845

Y = 416086 X = 1988671

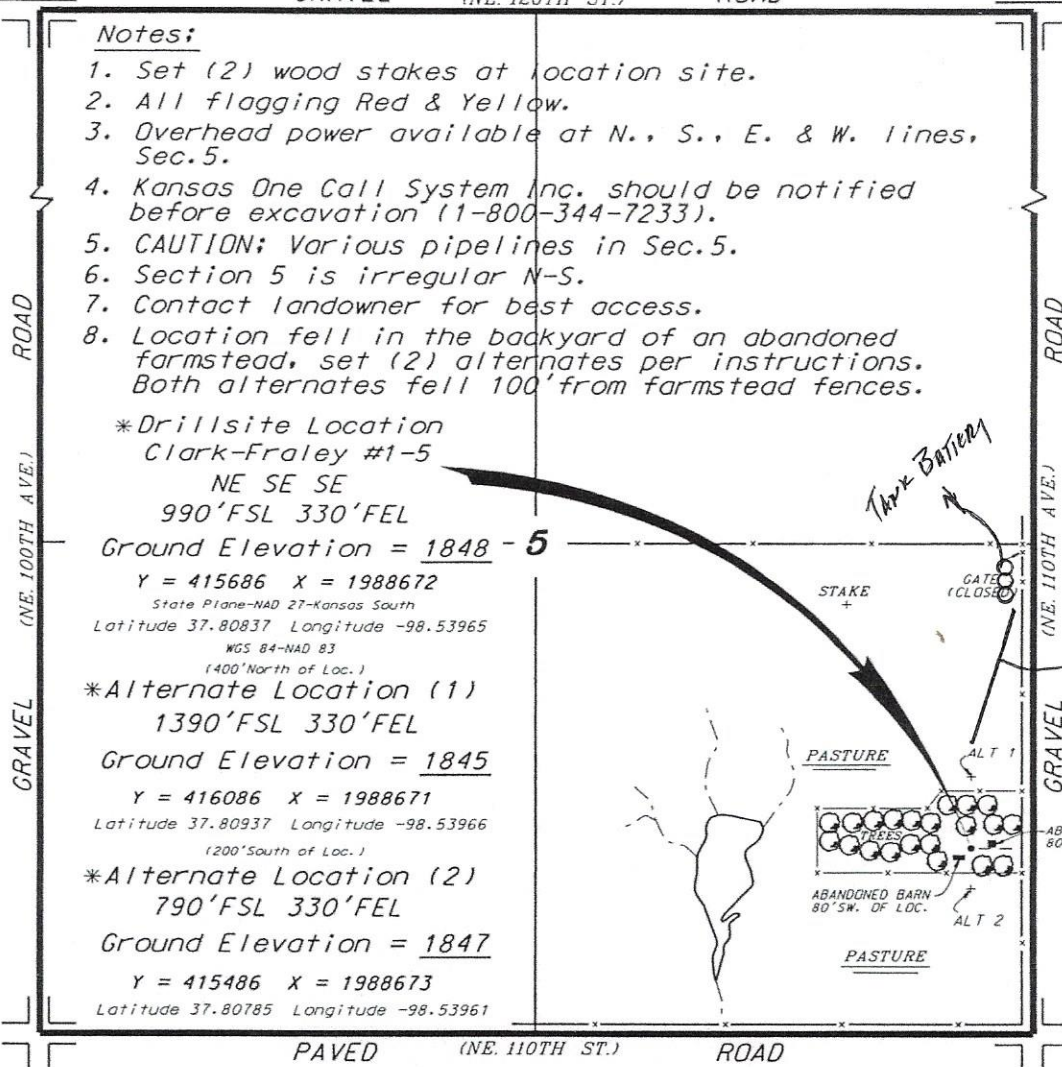
Latitude 37.80937 Longitude -98.53966  
 (200' South of Loc.)

**\*Alternate Location (2)**

790'FSL 330'FEL  
 Ground Elevation = 1847

Y = 415486 X = 1988673

Latitude 37.80785 Longitude -98.53961



\* Controlling data is based upon the best maps and photographs available to us and upon a regular section of land containing 640 acres.  
 \* Approximate section lines were determined using the normal standard of care of oilfield surveyors practicing in the state of Kansas. The section corners, which establish the precise section lines, were not necessarily located, and the exact location of the drillsite location in the section is not guaranteed. Therefore, the operator securing this service and accepting this plat and all other parties relying thereon agree to hold Central Kansas Oilfield Services, Inc., its officers and employees harmless from all losses, costs and expenses and said entries released from any liability from incidental or consequential damages.  
 \* Elevations derived from National Geodetic Vertical Datum.

Date June 19, 2018

