

Fall & Associates

Stake and Elevation Service

P.O. Box 222

Pretty Prairie, KS. 67570

785-243-7506

Date 5-15-18

Invoice Number 0514181

DARRAH OIL COMPANY

20-1

Bauhura

Operator

Number

Farm Name

Morris-KS

20

16s

8e

895'FNL 1515'FEL

County-State

S

T

R

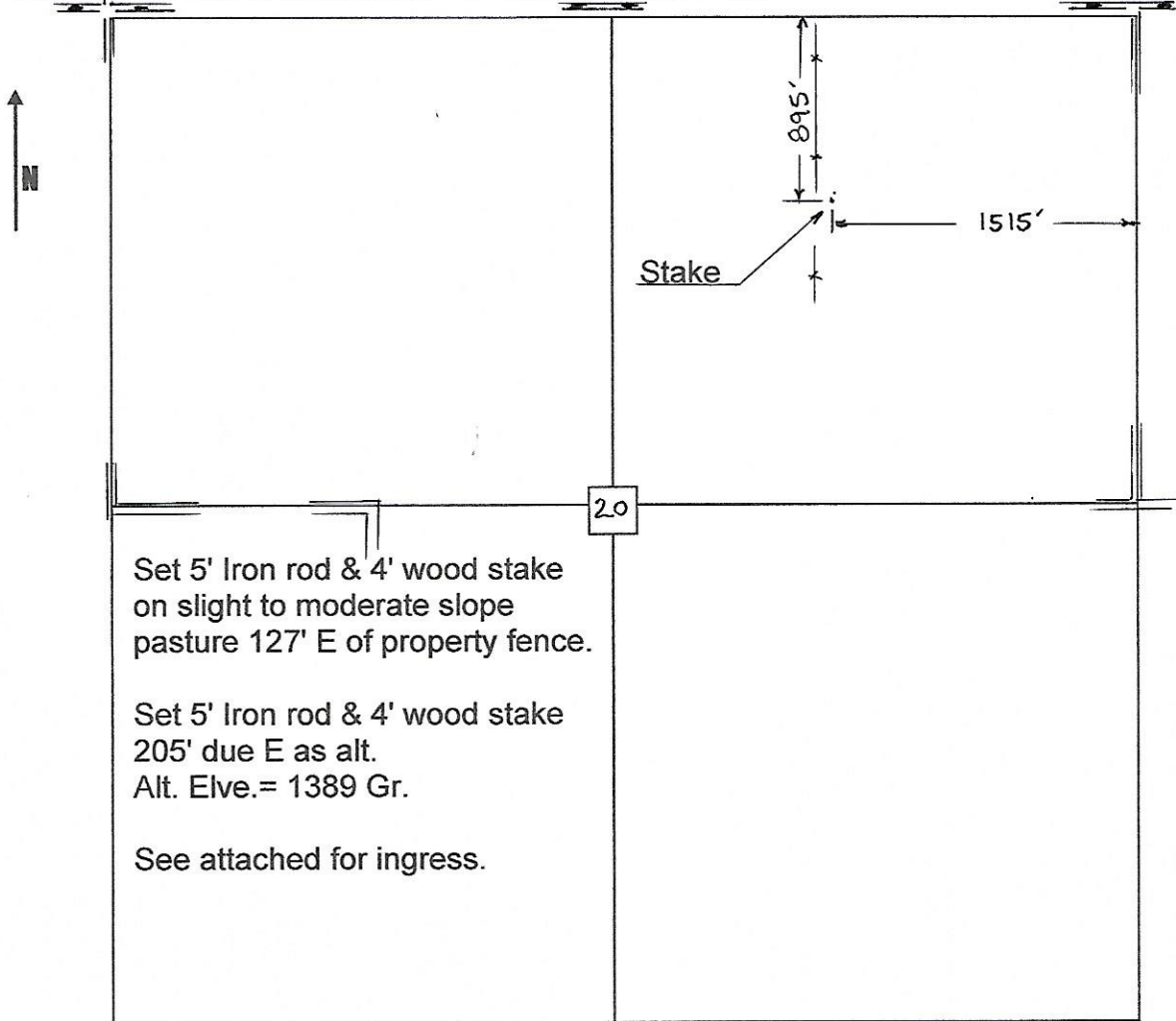
Location

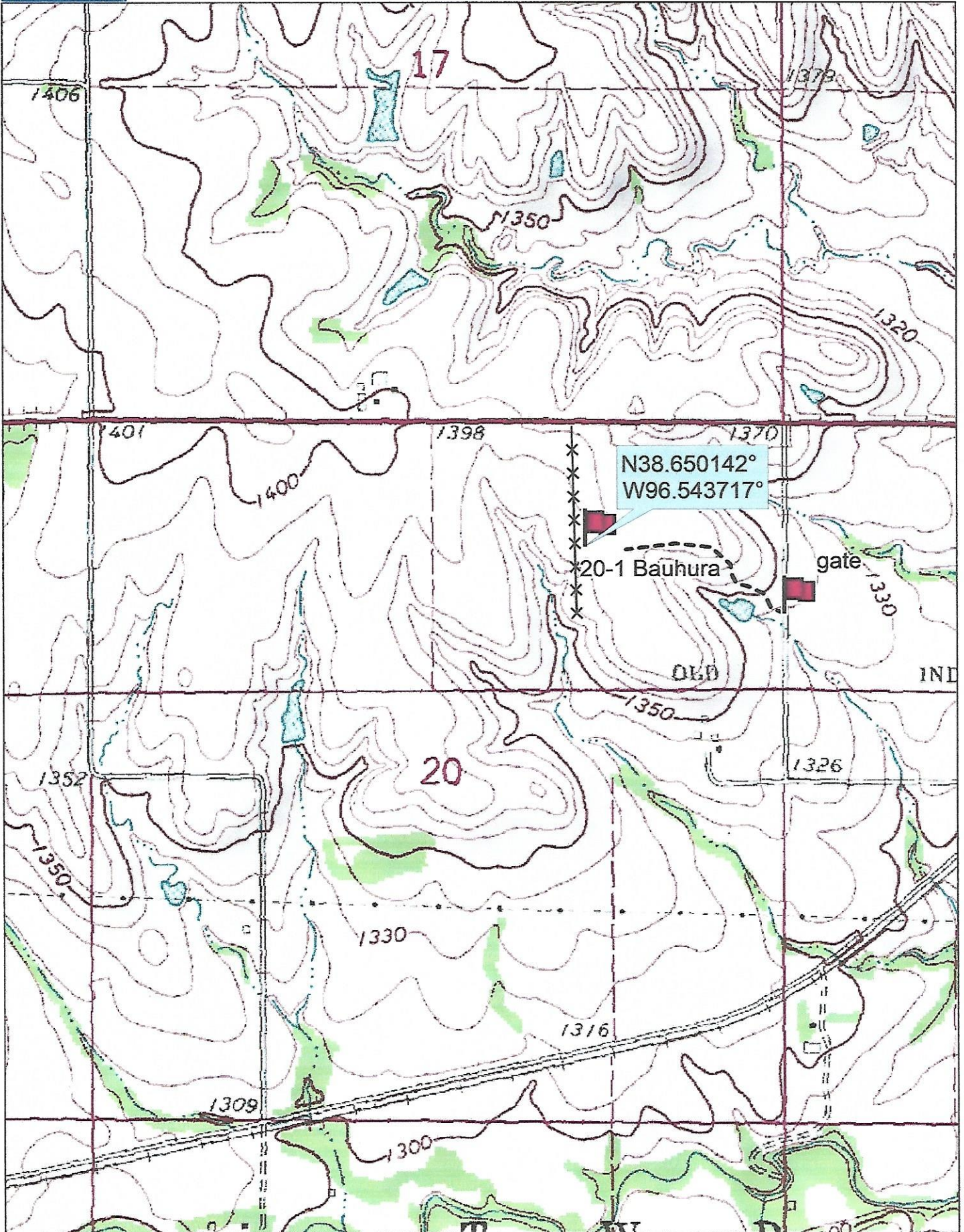
Darrah Oil Company
125 N. Market
Suite 1425
Wichita, KS. 67202

Elevation 1385 Gr.

Ordered By: Will

Scale 1"=1000'





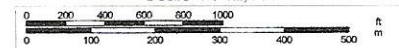
Data use subject to license.

© DeLorme. Topo North America™ 9.

www.delorme.com



Scale 1 : 12,000



1" = 1,000.0 ft

Data Zoom 13-1