



Fall & Associates

Stake and Elevation Service

P.O. Box 222

Pretty Prairie, KS. 67570

785-243-7506

Date 6-23-17

Invoice Number 0622171

MURFIN DRILLING

1-35

Youngmeyer

Operator

Number

Farm Name

Elk-KS

35

28s

8e

330'FSL 330'FWL

County-State

S

T

R

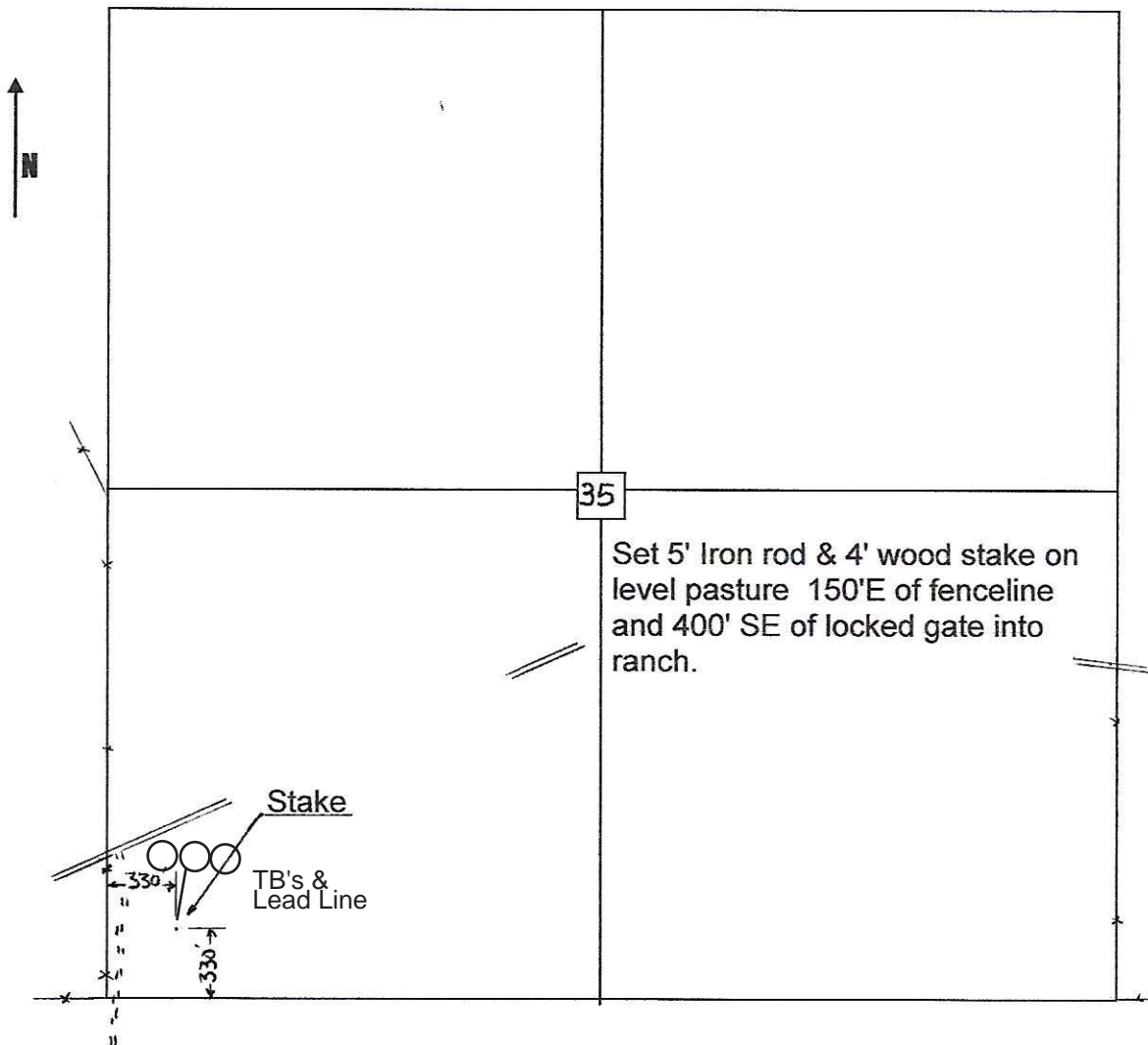
Location

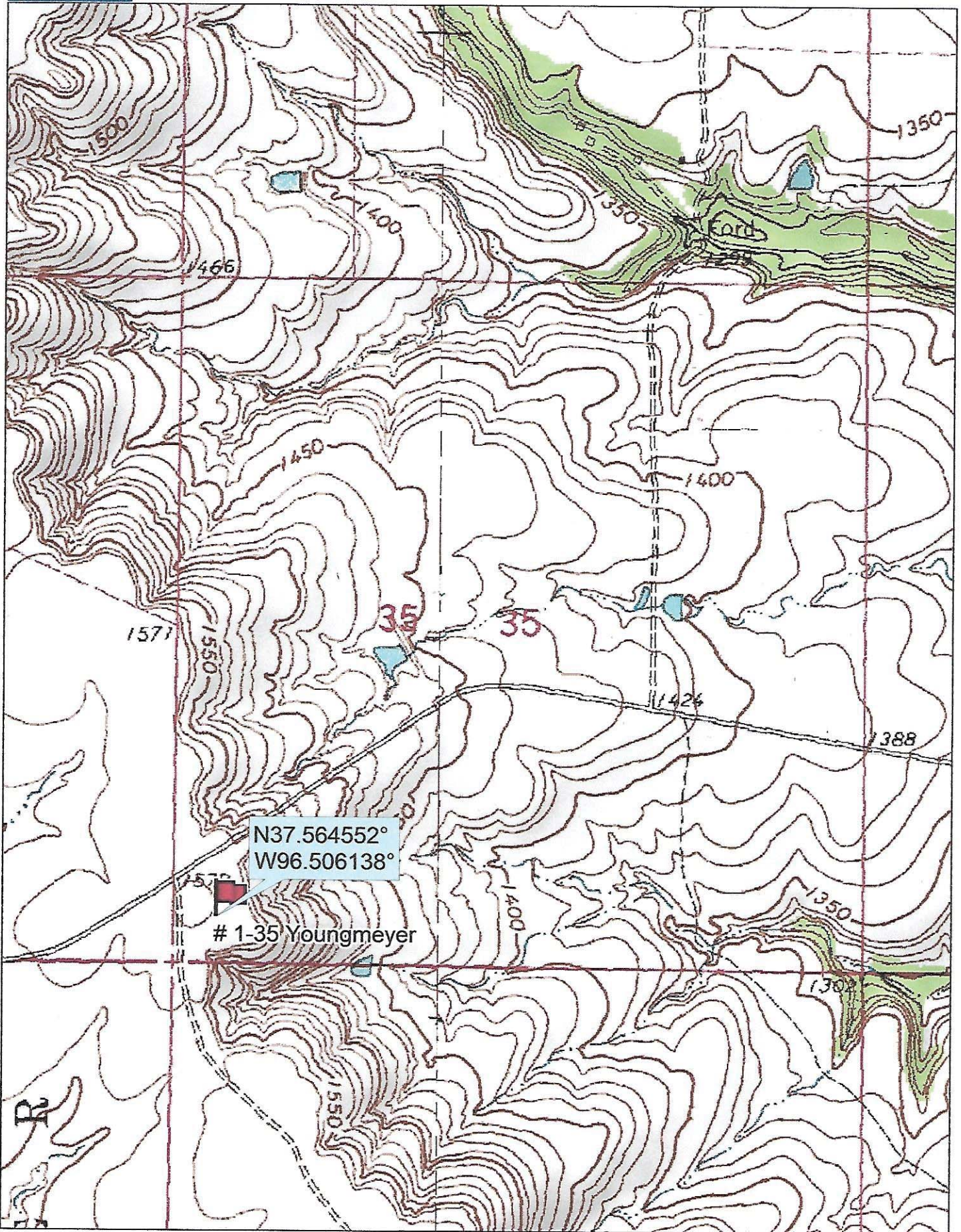
Murfin Drilling
250 N. Water
Suite 300
Wichita, Ks. 67202

Elevation 1572 Gr.

Ordered By: Shauna

Scale 1"=1000'





Data use subject to license.

© DeLorme. Topo North America™ 9.

www.delorme.com

