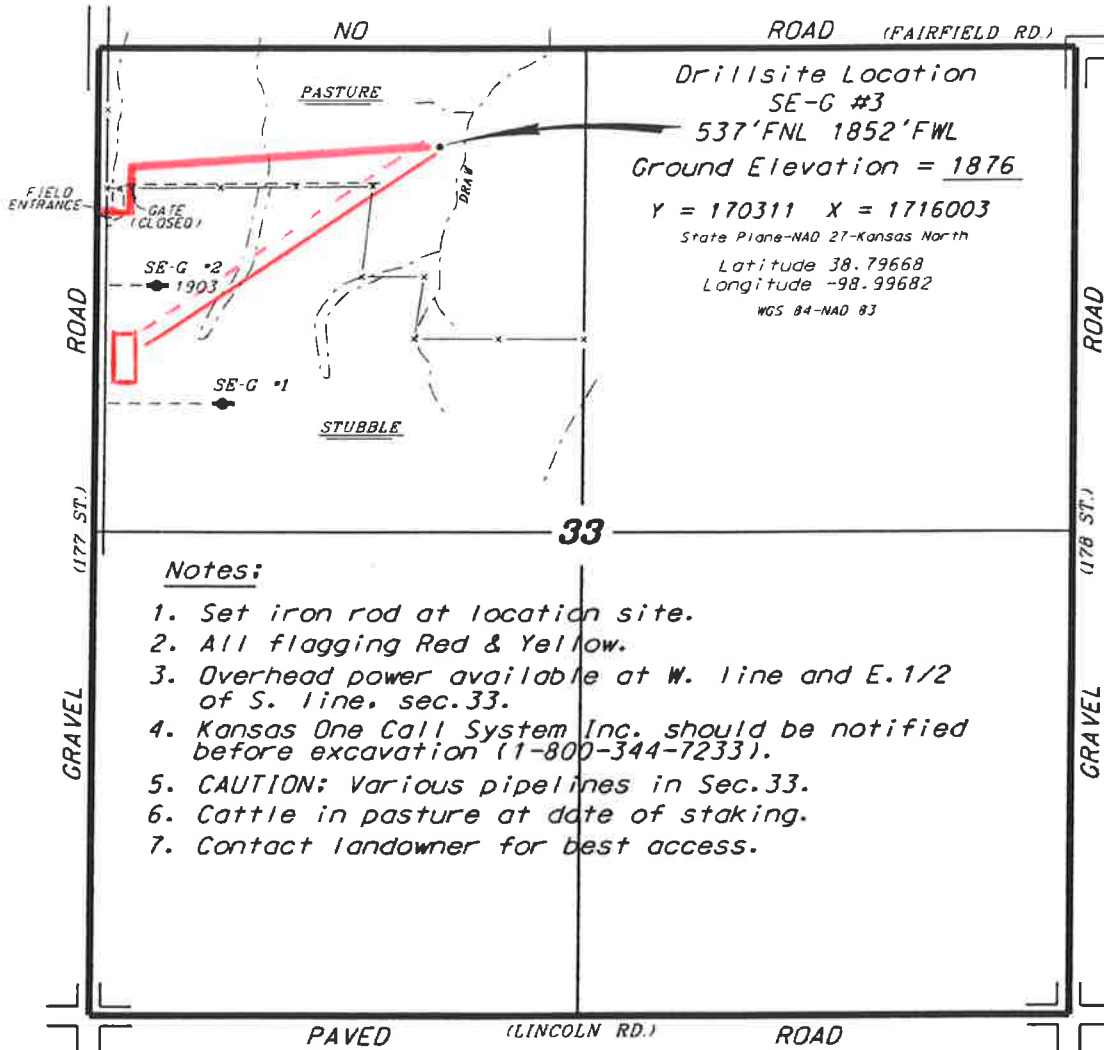
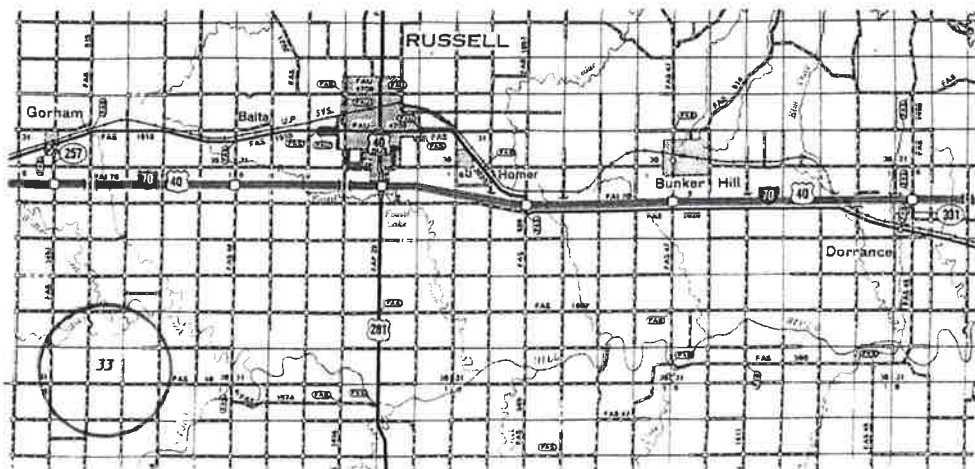


PROSPECT OIL & GAS CORPORATION  
 SE-G LEASE  
 NW. 1/4, SECTION 33, T14S, R15W  
 RUSSELL COUNTY, KANSAS



\* Ingress and egress to location as shown on this plat is per usage only and may not be legally opened for public use. Contact landowner, tenant and county road department for access.



\* Controlling data is based upon the best maps and photographs available to us and upon a regular section of 1/4 and containing 540 acres.  
 \* Approximate section lines were determined using the normal standard of care of oil field surveyors practicing in the state of Kansas. The section corners, which establish the precise section lines, were not necessarily located, and the exact location of the drill site location in the section is not guaranteed. Therefore, the operator, securing this service and accepting this plat and all other parties relying thereon agree to hold Central Kansas Oil Field Services, Inc., its officers and employees harmless from all losses, costs and expenses and said entities released from any liability from incidental or consequential damages.  
 \* Elevations derived from National Model Vertical Datum.

Date June 29, 2018