



Liberal Yard #1717 - Phone 620-624-2277 - 1700 S. Country Estates Road, Liberal KS 67901

PRESSURE PUMPING Job Log

Customer:	Pioneer Oil Company	Cement Pump No.:	70897-19570 5 hrs	Operator TRK No.:	98815		
Address:	PO Box 237	Ticket #:	1718-15632 L	Bulk TRK No.:	30464-37725	14354-19578	
City, State, Zip:	Vincennes, IN 47591	Job Type:	Z42 - Cement Production Casing				
Service District:		Well Type:	OIL				
Well Name and No.:	Clark Unit 1-5	Well Location:	5,9,28	County:	Sheridan	State:	Ks

Type of Cmt	Sacks	Additives	Truck Loaded On		
A-CON BLEND	275	3%CaCl, 1/4#POLYFLAKE	30464-37725	Front	Back
AA-2	175	5%W-60, 10%SALT, .5% C-17, 1/4# DEFOAMER, 5# GILSONITE	14354-19578	Front	Back
				Front	Back

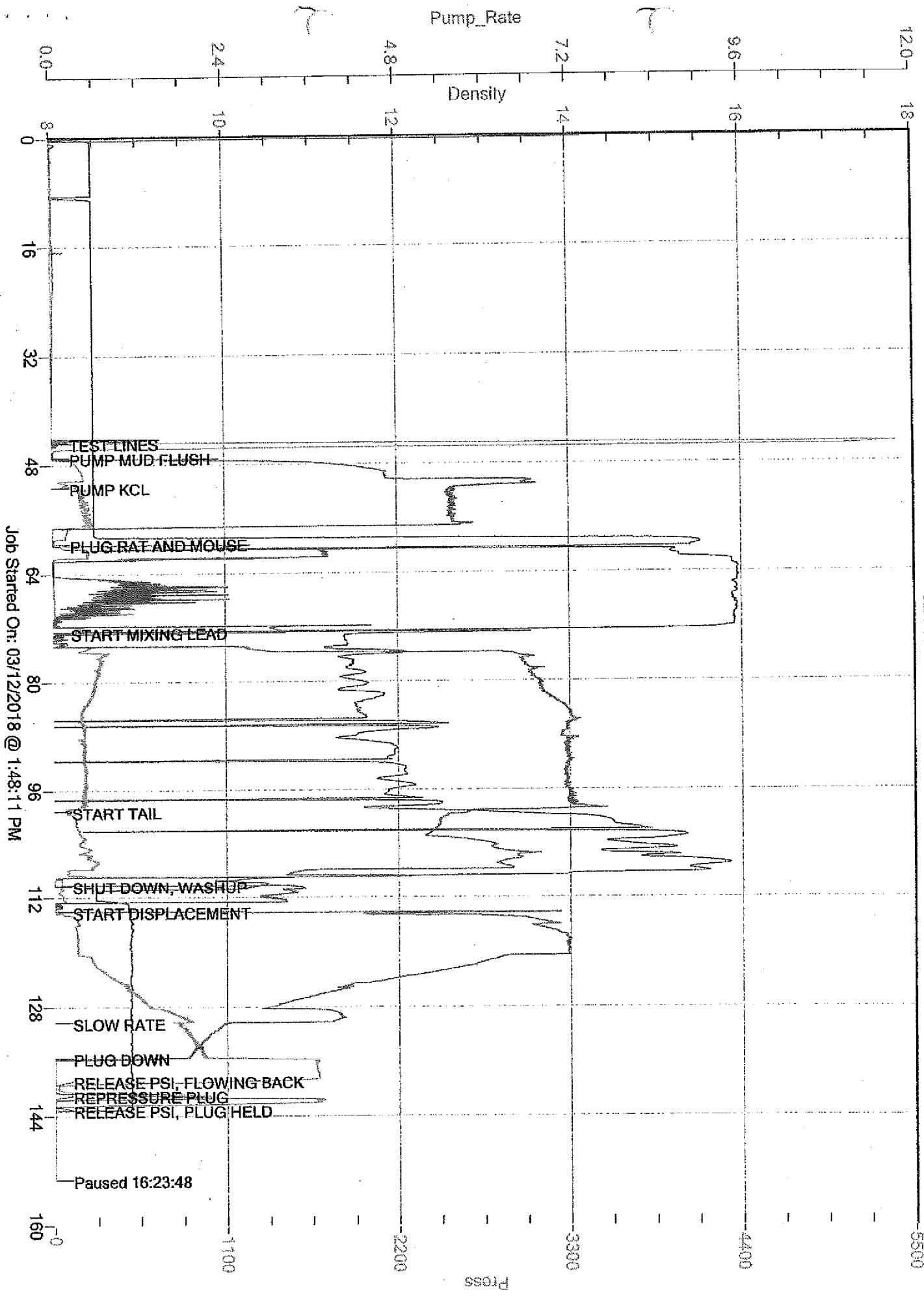
Lead/Tail:	Weight #1 Gal.	Cu/FV/sk	Water Requirements	CU. FT.	Man Hours / Personnel	
Lead:	11.2	3.16	19.63	869	Man Hours:	54
Tail:	14.8	1.51	6.65	264.25	# of Men on Job:	4

Time (am/pm)	(BPM)	Volume (BBLS)	Pumps		Pressure(Psi)		Description of Operation and Materials
			T	C	Tubing	Casing	
10:45							ON LOC, SAFTEY MTG, R.U.
11:25							START F.E.
1:07 PM							ON BOTTOM, BREAK CIRC
2:24 PM						5230	TEST LINES
2:26 PM	3.3	12				150	PUMP MUD FLUSH
14:31	3.4	20				210	PUMP KCL
14:39							PLUG R & M
2:54 PM	6.5					270	START MIXING LEAD @ 11.2#
15:18	6	155				80	ON TAIL @ 14.8#
15:31		47					SHUT DOWN, WASHUP
15:35	6.5					150	START DISPLACEMENT
15:51	2.3	86				810	SLOW RATE
15:57		96				1000-1670	PLUG DOWN
16:00						1670-40	RELEASE PSI, FLOWING BACK
16:02						1730	REPRESSURE PLUG
16:04						1730-0	RELEASE PSI, PLUG HELD
							JOB COMPLETE
							THANK YOU FOR YOUR BUSINESS!!!!

Size Hole		Depth			TYPE	
Size & Wt. Csg.	5 1/2 17#	Depth	4103.9	New / Used	Packer Shoe	yes
tbg.		Depth			Retainer	Depth
Top Plugs		Type			Perfs	CIBP

Customer Signature:	Basic Representative:	CHAD HINZ
	Basic Signature:	
	Date of Service:	3/12/2018

PIONEER OIL COMPANY
CLARK UNIT 1-5



Job Started On: 03/12/2018 @ 1:48:11 PM