

Marc A. Downing
Geologic Report
Consulting Petroleum Geologist
Drilling Time and Sample Log

Operator **Downing-Nelson Oil Co., Inc.** Elevation
 KB 2263
 DF 2261
 GL 2258
 Lease **Mary Pearson** No. **2-25**
 API # **15-195-23047-0000**
 Field **Pearson**
 Location **1374' FNL & 335' FWL**
 Sec. **25** Twp. **13s** Rge. **22w**
 County **Trego** State **Kansas**
 Formation **Sample tops** **Log Tops** **Datum** **Struct Comp**

Formation	Sample tops	Log Tops	Datum	Struct Comp
Top Anhydrite	1678	1676	+587	+6
Base Anhydrite	1727	1724	+539	-1
Topeka	3349	3346	-1083	+1
Heebner	3579	3576	-1313	-1
Toronto	3599	3594	-1331	FL
LKC	3612	3610	-1347	-1
BKC	3858	3856	-1593	+2
Marmaton	3961	3958	-1695	+2
Cherokee Sh	4004	4001	-1738	+2
Cherokee Sand	4036	4033	-1770	+2
Arbuckle	4096	4094	-1831	+3
Total Depth	4135	4134	-1868	

Reference Well For Structural Comparison **DNOCI**
Mary Pearson #1-25 **746' FNL & 714' FWL** **Sec. 25-13s-22w**

Drilling Contractor **Discovery Drilling, Rig #4**
 Commenced **7-1-18** Completed **7-7-18**
 Samples Saved From **3550** To **RTD**
 Drilling Time Kept From **3250** To **RTD**
 Samples Examined From **3250** To **RTD**
 Geological Supervision From **3250** To **RTD**

Summary and Recommendations
The Mary Pearson #2-25 ran structurally similar to nearby production. Due to poor development/depletion, it was decided by all concerned parties to plug and abandon the well.

Respectfully Submitted,
 Marc A. Downing

ROCK TYPES
 shale, grn shale, gry shale, gry Carbon Sh
 Dolsec sdy lmsst Lmsst lwr>
 Chrt vari Chrtcong'l Dolbrim

ACCESSORIES
 green shale red shale

STRINGER
 green shale red shale

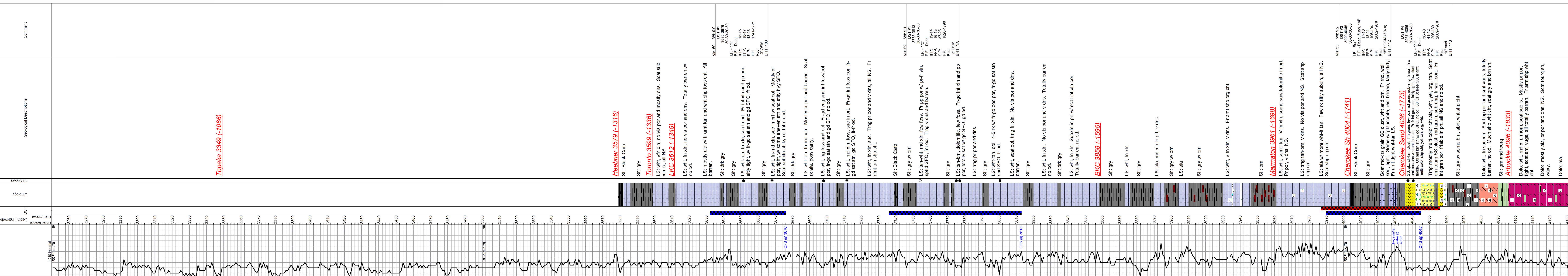
MINERAL
 Varicolored chert Chert White

OIL SHOWS
 Even Sh Spotted Sh 50 - 75 % Spotted Sh 25 - 50 % Spotted Sh 1 - 25 % Oils in shale Sh Oil Sh Fluorescence

DST
 DST Int DST alt Core Tail pipe

OTHER SYMBOLS
 Curve Track #1
 ROP (min/ft) 10 0
 Depth Interval Cord Interval

Printed by GEOSTrip VC Striplog version 4.0.8.15 (www.gstripc.com)



Comment
 V/S: 60 Vt: 9.0 Vt: 9.2
 DST #1 DST #4 DST #4
 3736-3813 3832-3976 3832-3976
 30-30-30-30-30 30-30-30-30-30 30-30-30-30-30
 I.F. - 14" I.F. - 14" I.F. - 14"
 F.F. - Dead F.F. - Dead F.F. - Dead
 18-16 18-16 18-16
 16-15 16-15 16-15
 S.P. 1741-1721
 H.P. 1741-1721
 Rec: 3' OSM
 BHT: 108
 V/S: 52 Vt: 9.1 Vt: 9.2
 DST #1 DST #4 DST #4
 3736-3813 3832-3976 3832-3976
 30-30-30-30-30 30-30-30-30-30 30-30-30-30-30
 I.F. - 14" I.F. - 14" I.F. - 14"
 F.F. - Dead F.F. - Dead F.F. - Dead
 18-16 18-16 18-16
 16-15 16-15 16-15
 S.P. 1741-1721
 H.P. 1741-1721
 Rec: 3' OSM
 BHT: 108
 V/S: 53 Vt: 9.2 Vt: 9.2
 DST #1 DST #4 DST #4
 3736-3813 3832-3976 3832-3976
 30-30-30-30-30 30-30-30-30-30 30-30-30-30-30
 I.F. - 14" I.F. - 14" I.F. - 14"
 F.F. - Dead F.F. - Dead F.F. - Dead
 18-16 18-16 18-16
 16-15 16-15 16-15
 S.P. 1741-1721
 H.P. 1741-1721
 Rec: 3' OSM
 BHT: 108
 V/S: 54 Vt: 9.2 Vt: 9.2
 DST #1 DST #4 DST #4
 3736-3813 3832-3976 3832-3976
 30-30-30-30-30 30-30-30-30-30 30-30-30-30-30
 I.F. - 14" I.F. - 14" I.F. - 14"
 F.F. - Dead F.F. - Dead F.F. - Dead
 18-16 18-16 18-16
 16-15 16-15 16-15
 S.P. 1741-1721
 H.P. 1741-1721
 Rec: 3' OSM
 BHT: 108
 V/S: 55 Vt: 9.2 Vt: 9.2
 DST #1 DST #4 DST #4
 3736-3813 3832-3976 3832-3976
 30-30-30-30-30 30-30-30-30-30 30-30-30-30-30
 I.F. - 14" I.F. - 14" I.F. - 14"
 F.F. - Dead F.F. - Dead F.F. - Dead
 18-16 18-16 18-16
 16-15 16-15 16-15
 S.P. 1741-1721
 H.P. 1741-1721
 Rec: 3' OSM
 BHT: 108
 V/S: 56 Vt: 9.2 Vt: 9.2
 DST #1 DST #4 DST #4
 3736-3813 3832-3976 3832-3976
 30-30-30-30-30 30-30-30-30-30 30-30-30-30-30
 I.F. - 14" I.F. - 14" I.F. - 14"
 F.F. - Dead F.F. - Dead F.F. - Dead
 18-16 18-16 18-16
 16-15 16-15 16-15
 S.P. 1741-1721
 H.P. 1741-1721
 Rec: 3' OSM
 BHT: 108
 V/S: 57 Vt: 9.2 Vt: 9.2
 DST #1 DST #4 DST #4
 3736-3813 3832-3976 3832-3976
 30-30-30-30-30 30-30-30-30-30 30-30-30-30-30
 I.F. - 14" I.F. - 14" I.F. - 14"
 F.F. - Dead F.F. - Dead F.F. - Dead
 18-16 18-16 18-16
 16-15 16-15 16-15
 S.P. 1741-1721
 H.P. 1741-1721
 Rec: 3' OSM
 BHT: 108
 V/S: 58 Vt: 9.2 Vt: 9.2
 DST #1 DST #4 DST #4
 3736-3813 3832-3976 3832-3976
 30-30-30-30-30 30-30-30-30-30 30-30-30-30-30
 I.F. - 14" I.F. - 14" I.F. - 14"
 F.F. - Dead F.F. - Dead F.F. - Dead
 18-16 18-16 18-16
 16-15 16-15 16-15
 S.P. 1741-1721
 H.P. 1741-1721
 Rec: 3' OSM
 BHT: 108
 V/S: 59 Vt: 9.2 Vt: 9.2
 DST #1 DST #4 DST #4
 3736-3813 3832-3976 3832-3976
 30-30-30-30-30 30-30-30-30-30 30-30-30-30-30
 I.F. - 14" I.F. - 14" I.F. - 14"
 F.F. - Dead F.F. - Dead F.F. - Dead
 18-16 18-16 18-16
 16-15 16-15 16-15
 S.P. 1741-1721
 H.P. 1741-1721
 Rec: 3' OSM
 BHT: 108
 V/S: 60 Vt: 9.2 Vt: 9.2
 DST #1 DST #4 DST #4
 3736-3813 3832-3976 3832-3976
 30-30-30-30-30 30-30-30-30-30 30-30-30-30-30
 I.F. - 14" I.F. - 14" I.F. - 14"
 F.F. - Dead F.F. - Dead F.F. - Dead
 18-16 18-16 18-16
 16-15 16-15 16-15
 S.P. 1741-1721
 H.P. 1741-1721
 Rec: 3' OSM
 BHT: 108
 V/S: 61 Vt: 9.2 Vt: 9.2
 DST #1 DST #4 DST #4
 3736-3813 3832-3976 3832-3976
 30-30-30-30-30 30-30-30-30-30 30-30-30-30-30
 I.F. - 14" I.F. - 14" I.F. - 14"
 F.F. - Dead F.F. - Dead F.F. - Dead
 18-16 18-16 18-16
 16-15 16-15 16-15
 S.P. 1741-1721
 H.P. 1741-1721
 Rec: 3' OSM
 BHT: 108
 V/S: 62 Vt: 9.2 Vt: 9.2
 DST #1 DST #4 DST #4
 3736-3813 3832-3976 3832-3976
 30-30-30-30-30 30-30-30-30-30 30-30-30-30-30
 I.F. - 14" I.F. - 14" I.F. - 14"
 F.F. - Dead F.F. - Dead F.F. - Dead
 18-16 18-16 18-16
 16-15 16-15 16-15
 S.P. 1741-1721
 H.P. 1741-1721
 Rec: 3' OSM
 BHT: 108
 V/S: 63 Vt: 9.2 Vt: 9.2
 DST #1 DST #4 DST #4
 3736-3813 3832-3976 3832-3976
 30-30-30-30-30 30-30-30-30-30 30-30-30-30-30
 I.F. - 14" I.F. - 14" I.F. - 14"
 F.F. - Dead F.F. - Dead F.F. - Dead
 18-16 18-16 18-16
 16-15 16-15 16-15
 S.P. 1741-1721
 H.P. 1741-1721
 Rec: 3' OSM
 BHT: 108
 V/S: 64 Vt: 9.2 Vt: 9.2
 DST #1 DST #4 DST #4
 3736-3813 3832-3976 3832-3976
 30-30-30-30-30 30-30-30-30-30 30-30-30-30-30
 I.F. - 14" I.F. - 14" I.F. - 14"
 F.F. - Dead F.F. - Dead F.F. - Dead
 18-16 18-16 18-16
 16-15 16-15 16-15
 S.P. 1741-1721
 H.P. 1741-1721
 Rec: 3' OSM
 BHT: 108
 V/S: 65 Vt: 9.2 Vt: 9.2
 DST #1 DST #4 DST #4
 3736-3813 3832-3976 3832-3976
 30-30-30-30-30 30-30-30-30-30 30-30-30-30-30
 I.F. - 14" I.F. - 14" I.F. - 14"
 F.F. - Dead F.F. - Dead F.F. - Dead
 18-16 18-16 18-16
 16-15 16-15 16-15
 S.P. 1741-1721
 H.P. 1741-1721
 Rec: 3' OSM
 BHT: 108
 V/S: 66 Vt: 9.2 Vt: 9.2
 DST #1 DST #4 DST #4
 3736-3813 3832-3976 3832-3976
 30-30-30-30-30 30-30-30-30-30 30-30-30-30-30
 I.F. - 14" I.F. - 14" I.F. - 14"
 F.F. - Dead F.F. - Dead F.F. - Dead
 18-16 18-16 18-16
 16-15 16-15 16-15
 S.P. 1741-1721
 H.P. 1741-1721
 Rec: 3' OSM
 BHT: 108
 V/S: 67 Vt: 9.2 Vt: 9.2
 DST #1 DST #4 DST #4
 3736-3813 3832-3976 3832-3976
 30-30-30-30-30 30-30-30-30-30 30-30-30-30-30
 I.F. - 14" I.F. - 14" I.F. - 14"
 F.F. - Dead F.F. - Dead F.F. - Dead
 18-16 18-16 18-16
 16-15 16-15 16-15
 S.P. 1741-1721
 H.P. 1741-1721
 Rec: 3' OSM
 BHT: 108
 V/S: 68 Vt: 9.2 Vt: 9.2
 DST #1 DST #4 DST #4
 3736-3813 3832-3976 3832-3976
 30-30-30-30-30 30-30-30-30-30 30-30-30-30-30
 I.F. - 14" I.F. - 14" I.F. - 14"
 F.F. - Dead F.F. - Dead F.F. - Dead
 18-16 18-16 18-16
 16-15 16-15 16-15
 S.P. 1741-1721
 H.P. 1741-1721
 Rec: 3' OSM
 BHT: 108
 V/S: 69 Vt: 9.2 Vt: 9.2
 DST #1 DST #4 DST #4
 3736-3813 3832-3976 3832-3976
 30-30-30-30-30 30-30-30-30-30 30-30-30-30-30
 I.F. - 14" I.F. - 14" I.F. - 14"
 F.F. - Dead F.F. - Dead F.F. - Dead
 18-16 18-16 18-16
 16-15 16-15 16-15
 S.P. 1741-1721
 H.P. 1741-1721
 Rec: 3' OSM
 BHT: 108
 V/S: 70 Vt: 9.2 Vt: 9.2
 DST #1 DST #4 DST #4
 3736-3813 3832-3976 3832-3976
 30-30-30-30-30 30-30-30-30-30 30-30-30-30-30
 I.F. - 14" I.F. - 14" I.F. - 14"
 F.F. - Dead F.F. - Dead F.F. - Dead
 18-16 18-16 18-16
 16-15 16-15 16-15
 S.P. 1741-1721
 H.P. 1741-1721
 Rec: 3' OSM
 BHT: 108
 V/S: 71 Vt: 9.2 Vt: 9.2
 DST #1 DST #4 DST #4
 3736-3813 3832-3976 3832-3976
 30-30-30-30-30 30-30-30-30-30 30-30-30-30-30
 I.F. - 14" I.F. - 14" I.F. - 14"
 F.F. - Dead F.F. - Dead F.F. - Dead
 18-16 18-16 18-16
 16-15 16-15 16-15
 S.P. 1741-1721
 H.P. 1741-1721
 Rec: 3' OSM
 BHT: 108
 V/S: 72 Vt: 9.2 Vt: 9.2
 DST #1 DST #4 DST #4
 3736-3813 3832-3976 3832-3976
 30-30-30-30-30 30-30-30-30-30 30-30-30-30-30
 I.F. - 14" I.F. - 14" I.F. - 14"
 F.F. - Dead F.F. - Dead F.F. - Dead
 18-16 18-16 18-16
 16-15 16-15 16-15
 S.P. 1741-1721
 H.P. 1741-1721
 Rec: 3' OSM
 BHT: 108
 V/S: 73 Vt: 9.2 Vt: 9.2
 DST #1 DST #4 DST #4
 3736-3813 3832-3976 3832-3976
 30-30-30-30-30 30-30-30-30-30 30-30-30-30-30
 I.F. - 14" I.F. - 14" I.F. - 14"
 F.F. - Dead F.F. - Dead F.F. - Dead
 18-16 18-16 18-16
 16-15 16-15 16-15
 S.P. 1741-1721
 H.P. 1741-1721
 Rec: 3' OSM
 BHT: 108
 V/S: 74 Vt: 9.2 Vt: 9.2
 DST #1 DST #4 DST #4
 3736-3813 3832-3976 3832-3976
 30-30-30-30-30 30-30-30-30-30 30-30-30-30-30
 I.F. - 14" I.F. - 14" I.F. - 14"
 F.F. - Dead F.F. - Dead F.F. - Dead
 18-16 18-16 18-16
 16-15 16-15 16-15
 S.P. 1741-1721
 H.P. 1741-1721
 Rec: 3' OSM
 BHT: 108
 V/S: 75 Vt: 9.2 Vt: 9.2
 DST #1 DST #4 DST #4
 3736-3813 3832-3976 3832-3976
 30-30-30-30-30 30-30-30-30-30 30-30-30-30-30
 I.F. - 14" I.F. - 14" I.F. - 14"
 F.F. - Dead F.F. - Dead F.F. - Dead
 18-16 18-16 18-16
 16-15 16-15 16-15
 S.P. 1741-1721
 H.P. 1741-1721
 Rec: 3' OSM
 BHT: 108
 V/S: 76 Vt: 9.2 Vt: 9.2
 DST #1 DST #4 DST #4
 3736-3813 3832-3976 3832-3976
 30-30-30-30-30 30-30-30-30-30 30-30-30-30-30
 I.F. - 14" I.F. - 14" I.F. - 14"
 F.F. - Dead F.F. - Dead F.F. - Dead
 18-16 18-16 18-16
 16-15 16-15 16-15
 S.P. 1741-1721
 H.P. 1741-1721
 Rec: 3' OSM
 BHT: 108
 V/S: 77 Vt: 9.2 Vt: 9.2
 DST #1 DST #4 DST #4
 3736-3813 3832-3976 3832-3976
 30-30-30-30-30 30-30-30-30-30 30-30-30-30-30
 I.F. - 14" I.F. - 14" I.F. - 14"
 F.F. - Dead F.F. - Dead F.F. - Dead
 18-16 18-16 18-16
 16-15 16-15 16-15
 S.P. 1741-1721
 H.P. 1741-1721
 Rec: 3' OSM
 BHT: 108
 V/S: 78 Vt: 9.2 Vt: 9.2
 DST #1 DST #4 DST #4
 3736-3813 3832-3976 3832-3976
 30-30-30-30-30 30-30-30-30-30 30-30-30-30-30
 I.F. - 14" I.F. - 14" I.F. - 14"
 F.F. - Dead F.F. - Dead F.F. - Dead
 18-16 18-16 18-16
 16-15 16-15 16-15
 S.P. 1741-1721
 H.P. 1741-1721
 Rec: 3' OSM
 BHT: 108
 V/S: 79 Vt: 9.2 Vt: 9.2
 DST #1 DST #4 DST #4
 3736-3813 3832-3976 3832-3976
 30-30-30-30-30 30-30-30-30-30 30-30-30-30-30
 I.F. - 14" I.F. - 14" I.F. - 14"
 F.F. - Dead F.F. - Dead F.F. - Dead
 18-16 18-16 18-16
 16-15 16-15 16-15
 S.P. 1741-1721
 H.P. 1741-1721
 Rec: 3' OSM
 BHT: 108
 V/S: 80 Vt: 9.2 Vt: 9.2
 DST #1 DST #4 DST #4
 3736-3813 3832-3976 3832-3976
 30-30-30-30-30 30-30-30-30-30 30-30-30-30-30
 I.F. - 14" I.F. - 14" I.F. - 14"
 F.F. - Dead F.F. - Dead F.F. - Dead
 18-16 18-16 18-16
 16-15 16-15 16-15
 S.P. 1741-1721
 H.P. 1741-1721
 Rec: 3' OSM
 BHT: 108
 V/S: 81 Vt: 9.2 Vt: 9.2
 DST #1 DST #4 DST #4
 3736-3813 3832-3976 3832-3976
 30-30-30-30-30 30-30-30-30-30 30-30-30-30-30
 I.F. - 14" I.F. - 14" I.F. - 14"
 F.F. - Dead F.F. - Dead F.F. - Dead
 18-16 18-16 18-16
 16-15 16-15 16-15
 S.P. 1741-1721
 H.P. 1741-1721
 Rec: 3' OSM
 BHT: 108
 V/S: 82 Vt: 9.2 Vt: 9.2
 DST #1 DST #4 DST #4
 3736-3813 3832-3976 3832-3976
 30-30-30-30-30 30-30-30-30-30 30-30-30-30-30
 I.F. - 14" I.F. - 14" I.F. - 14"
 F.F. - Dead F.F. - Dead F.F. - Dead
 18-16 18-16 18-16
 16-15 16-15 16-15
 S.P. 1741-1721
 H.P. 1741-1721
 Rec: 3' OSM
 BHT: 108
 V/S: 83 Vt: 9.2 Vt: 9.2
 DST #1 DST #4 DST #4
 3736-3813 3832-3976 3832-3976
 30-30-30-30-30 30-30-30-30-30 30-30-30-30-30
 I.F. - 14" I.F. - 14" I.F. - 14"
 F.F. - Dead F.F. - Dead F.F. - Dead
 18-16 18-16 18-16
 16-15 16-15 16-15
 S.P. 1741-1721
 H.P. 1741-1721
 Rec: 3' OSM
 BHT: 108
 V/S: 84 Vt: 9.2 Vt: 9.2
 DST #1 DST #4 DST #4
 3736-3813 3832-3976 3832-3976
 30-30-30-30-30 30-30-30-30-30 30-30-30-30-30
 I.F. - 14" I.F. - 14" I.F. - 14"
 F.F. - Dead F.F. - Dead F.F. - Dead
 18-16 18-16 18-16
 16-15 16-15 16-15
 S.P. 1741-1721
 H.P. 1741-1721
 Rec: 3' OSM
 BHT: 108
 V/S: 85 Vt: 9.2 Vt: 9.2
 DST #1 DST #4 DST #4
 3736-3813 3832-3976 3832-3976
 30-30-30-30-30 30-30-30-30-30 30-30-30-30-30
 I.F. - 14" I.F. - 14" I.F. - 14"
 F.F. - Dead F.F. - Dead F.F. - Dead
 18-16 18-16 18-16
 16-15 16-15 16-15
 S.P. 1741-1721
 H.P. 1741-1721
 Rec: 3' OSM
 BHT: 108
 V/S: 86 Vt: 9.2 Vt: 9.2
 DST #1 DST #4 DST #4
 3736-3813 3832-3976 3832-3976
 30-30-30-30-30 30-30-30-30-30 30-30-30-30-30
 I.F. - 14" I.F. - 14" I.F. - 14"
 F.F. - Dead F.F. - Dead F.F. - Dead
 18-16 18-16 18-16
 16-15 16-15 16-15
 S.P. 1741-1721
 H.P. 1741-1721
 Rec: 3' OSM
 BHT: 108
 V/S: 87 Vt: 9.2 Vt: 9.2
 DST #1 DST #4 DST #4
 3736-3813 3832-3976 3832-3976
 30-30-30-30-30 30-30-30-30-30 30-30-30-30-30
 I.F. - 14" I.F. - 14" I.F. - 14"
 F.F. - Dead F.F. - Dead F.F. - Dead
 18-16 18-16 18-16
 16-15 16-15 16-15
 S.P. 1741-1721
 H.P. 1741-1721
 Rec: 3' OSM
 BHT: 108
 V/S: 88 Vt: 9.2 Vt: 9.2
 DST #1 DST #4 DST #4
 3736-3813 3832-3976 3832-3976
 30-30-30-30-30 30-30-30-30-30 30-30-30-30-30
 I.F. - 14" I.F. - 14" I.F. - 14"
 F.F. - Dead F.F. - Dead F.F. - Dead
 18-16 18-16 18-16
 16-15 16-15 16-15
 S.P. 1741-1721
 H.P. 1741-1721
 Rec: 3' OSM
 BHT: 108
 V/S: 89 Vt: 9.2 Vt: 9.2
 DST #1 DST #4 DST #4
 3736-3813 3832-3976 3832-3976
 30-30-30-30-30 30-30-30-30-30 30-30-30-30-30