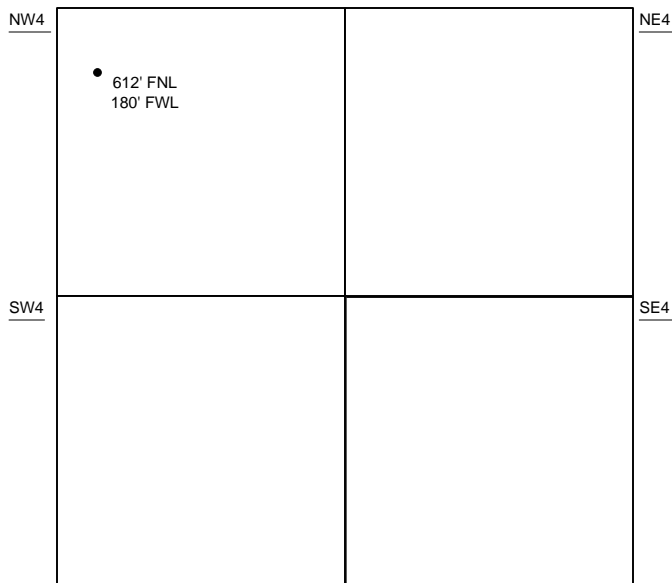
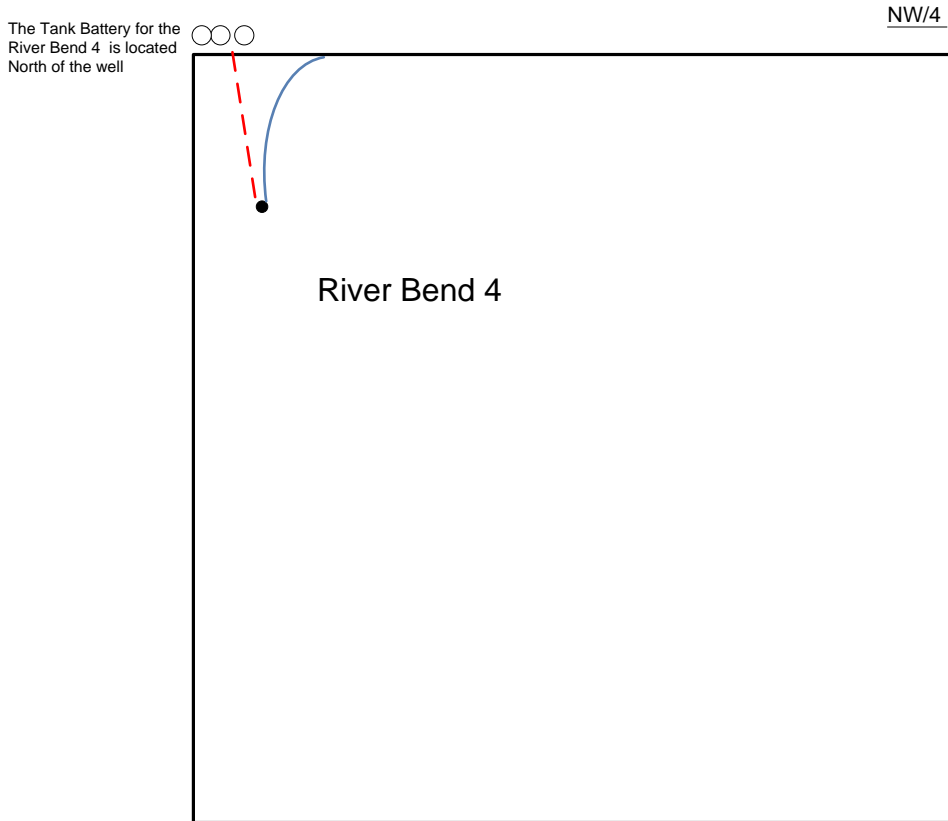


Proposed Plan of Construction

River Bend 4
Sec 35 T24S-R32W
Finney County, KS



Sec 26 – T24S – R32W



- Well Location
- Proposed Lease Roads
- - - Proposed Pipeline
- Proposed Tank Battery
- Proposed Power Lines
- - - Existing Pipeline

Proposed Details of
NW/4 Sec 35 – T24S – R32W

Note-Drawing **Not** to Scale