

ADVANTAGE ELEVATIONS

OIL FIELD SURVEYORS

BOX 8604 - PRATT, KS 67124
(620) 672-6491

72182

INVOICE NO.

House Ranch

VAL ENERGY INC

OPERATOR

2

NO.

2-19 OWWO

FARM

COWLEY
COUNTY

19 33s 6e
S T R

275' N of C NE NW SE

LOCATION

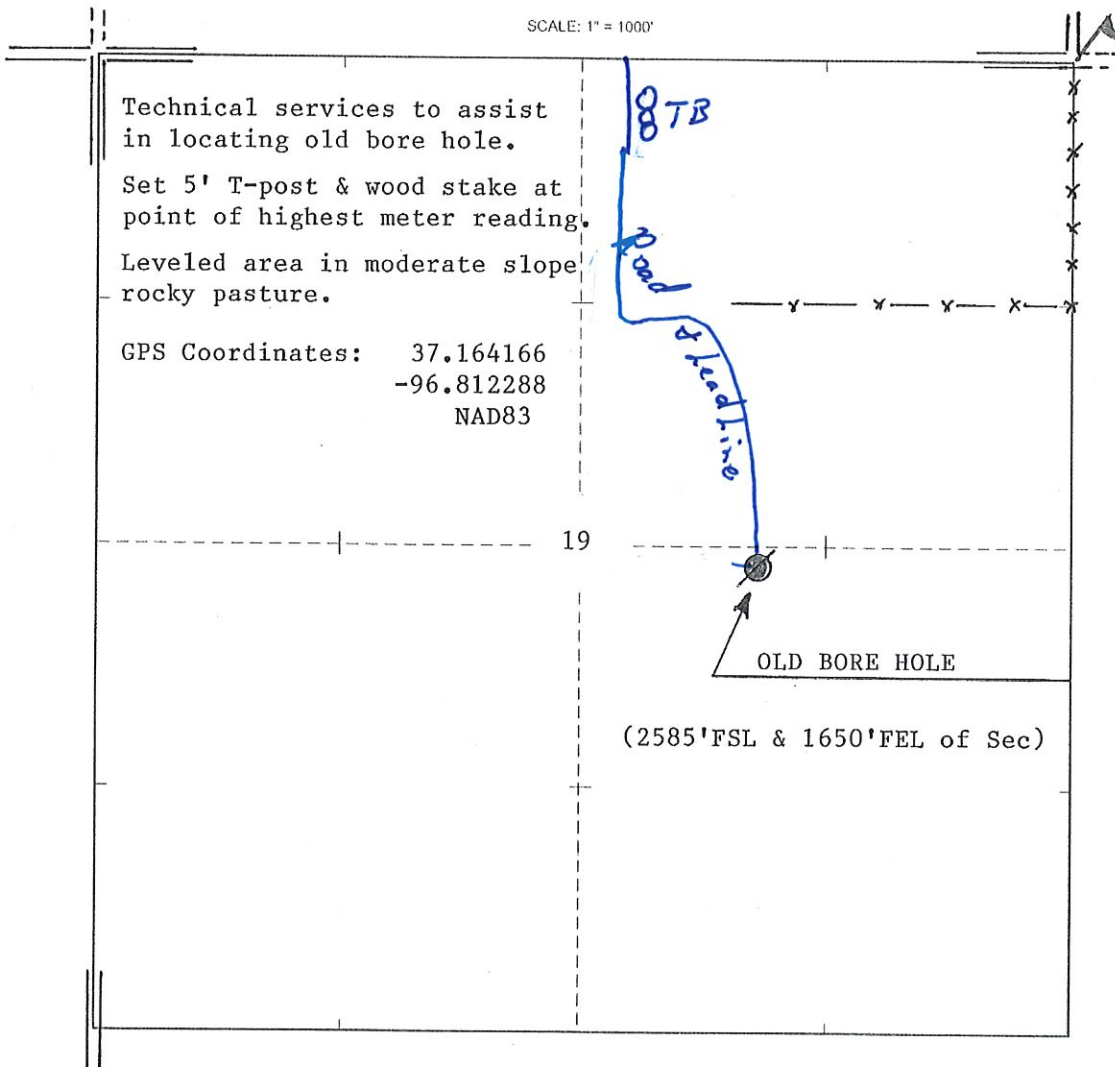
ELEVATION: 1281' GR



VAL ENERGY INC
125 N Market Suite 1110
Wichita, KS 67202

AUTHORIZED BY: Todd Allam

SCALE: 1" = 1000'



DATE STAKED: 7/2/18