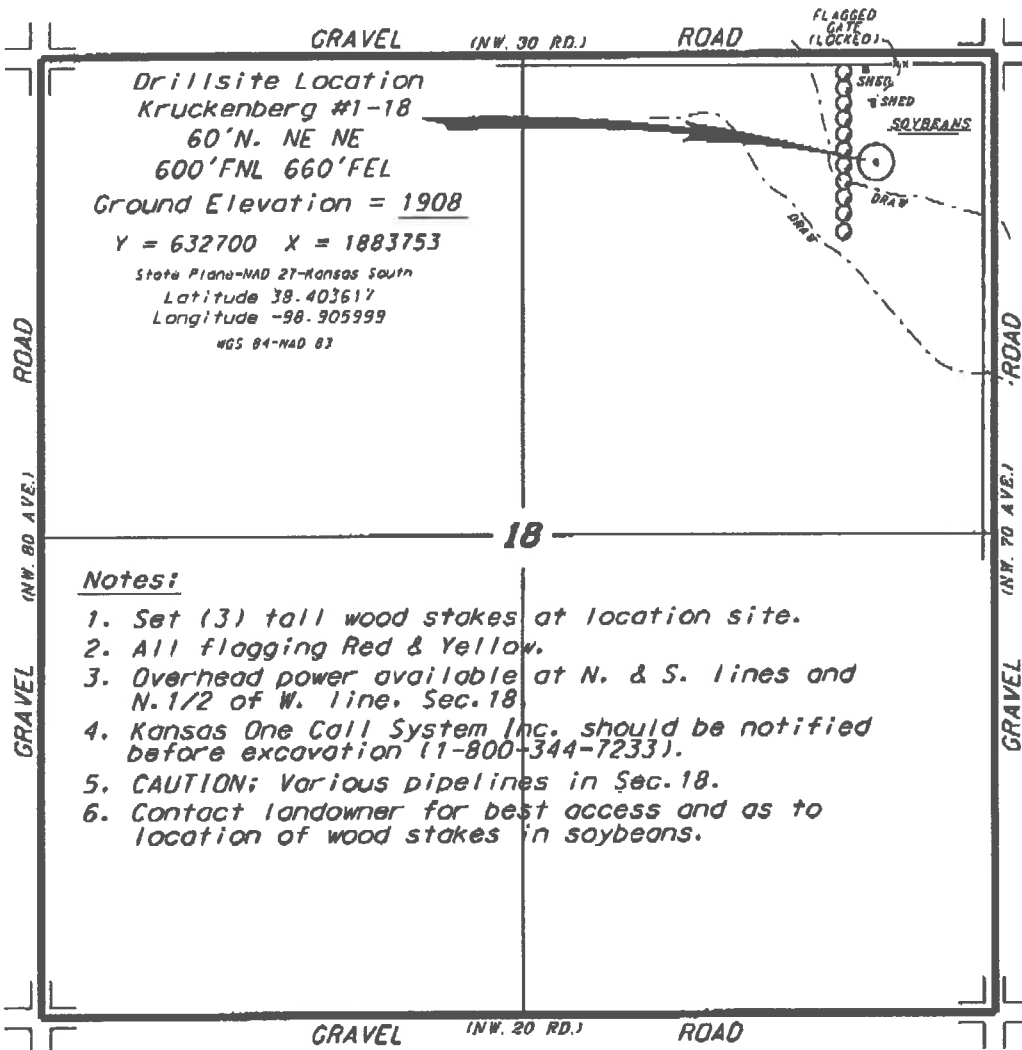
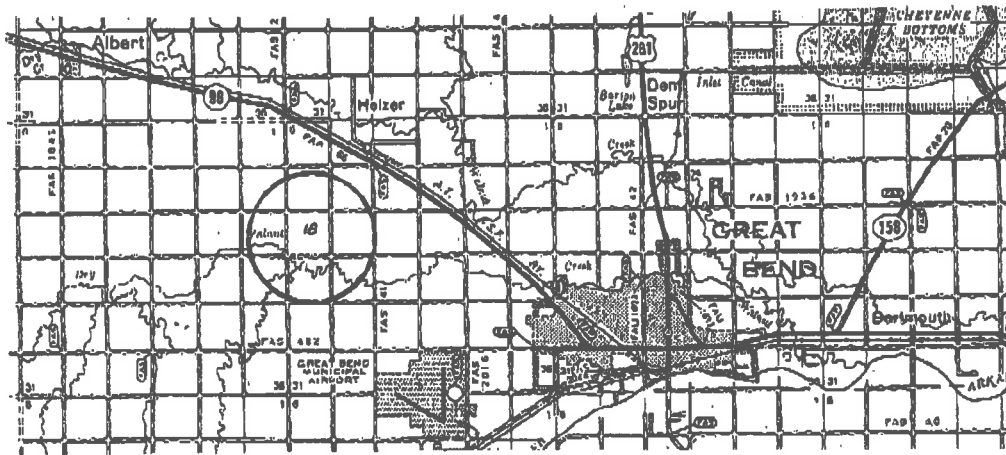


F.G. HOLL COMPANY, LLC
 KRUCKENBERG LEASE
 NE.1/4, SECTION 18, T19S, R14W
 BARTON COUNTY, KANSAS



Ingress and egress to location as shown on this plat is per usage only and may not be legally opened for public use. Contact landowner, tenant and county road department for access.



Controlling data is based upon the best maps and photographs available to us and upon a regular section of land containing 640 acres.
 Approximate section lines were determined using the normal standards of care of oilfield surveyors practicing in the state of Kansas. The section corners, which establish the precise section lines, were not necessarily located, and the exact location of the drillsite location in the section is not guaranteed. Therefore, the user/owner securing this service and operating this plat and all other services retaining therein agree to hold Central Kansas Oilfield Services, Inc., its officers and employees harmless from all losses, costs and expenses and shall release from any liability from incidental or consequential damages.
 Elevation derived from National Geodetic Vertical Datum.

Date July 20, 2018