

KEVIN L. KESSLER

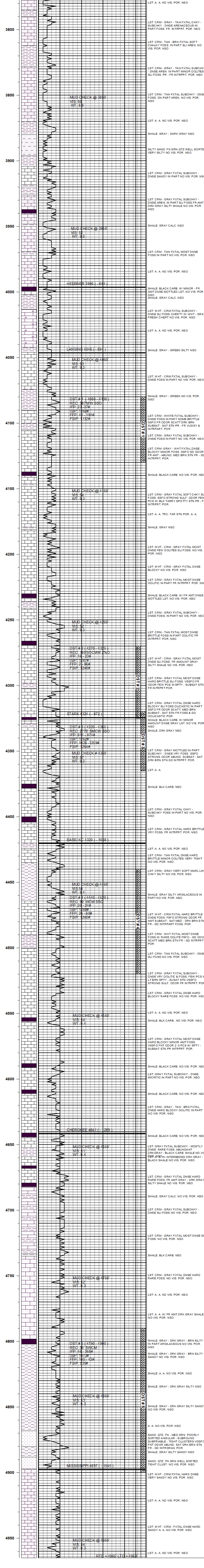
CONSULTING PETROLEUM GEOLOGIST

(316) 522 - 7338

OPERATOR : MULL DRILLING CO. INC.		ELEVATION	
LEASE : R & M MILLER	WELL # : 1 - 14	KB: 3352'	
LOCATION : 443' FSL & 2219' FEL		GL: 3340'	
SEC : 14	TWP : 16 S	RGE : 37 W	MEASUREMENTS FROM:
COUNTY : WICHITA	STATE : KANSAS		KB
CONTRACTOR: DUKE DRILLING RIG #1		CONTRACT RECORD:	
COMM: 03 - 22 - 2018	COMP: 04 - 02 - 2018	SURFACE:	
RTD: 4965'	LTD: 4960'	8 5/8" @ 267'	
GEOLOGICAL SUPERVISION FROM: 3700'		PRODUCTION:	
SAMPLES SAVED FROM: 3700'		NONE	

FORMATION:	TOP	LOG	DATUM	TOP	SAMPLE	DATUM	COMP.	ELECTRICAL SURVEYS: DIL CNL / CDL MICRO SONIC
HEEBNER	3996	- 644		3996	- 644		.	
LANSING	4046	- 1031		4046	- 694		.	
STARK	4324	- 972		4324	- 972		.	
BASE/KC	4420	- 1068		4420	- 1068		.	
CHEROKEE	4641	- 1289		4641	- 1289		.	
MISSISSIPPI	4897	- 1545		4897	- 1545		.	

REFERENCE WELL FOR STRUCTURAL COMPARISON:



COMMENTS :
DUE TO NEGATIVE DST RESULTS THIS WELL WAS PLUGGED AND ABANDONED