

Fall & Associates

Stake and Elevation Service

P.O. Box 222

Pretty Prairie, KS. 67570

785-243-7506

Date 7-12-18

Invoice Number 0710181

MURFIN DRILLING

1-12

Munn-Bailey Unit

Operator

Number

Farm Name

Cheyenne-KS

12

2s

38w

2640'FSL 2310'FWL

County-State

S

T

R

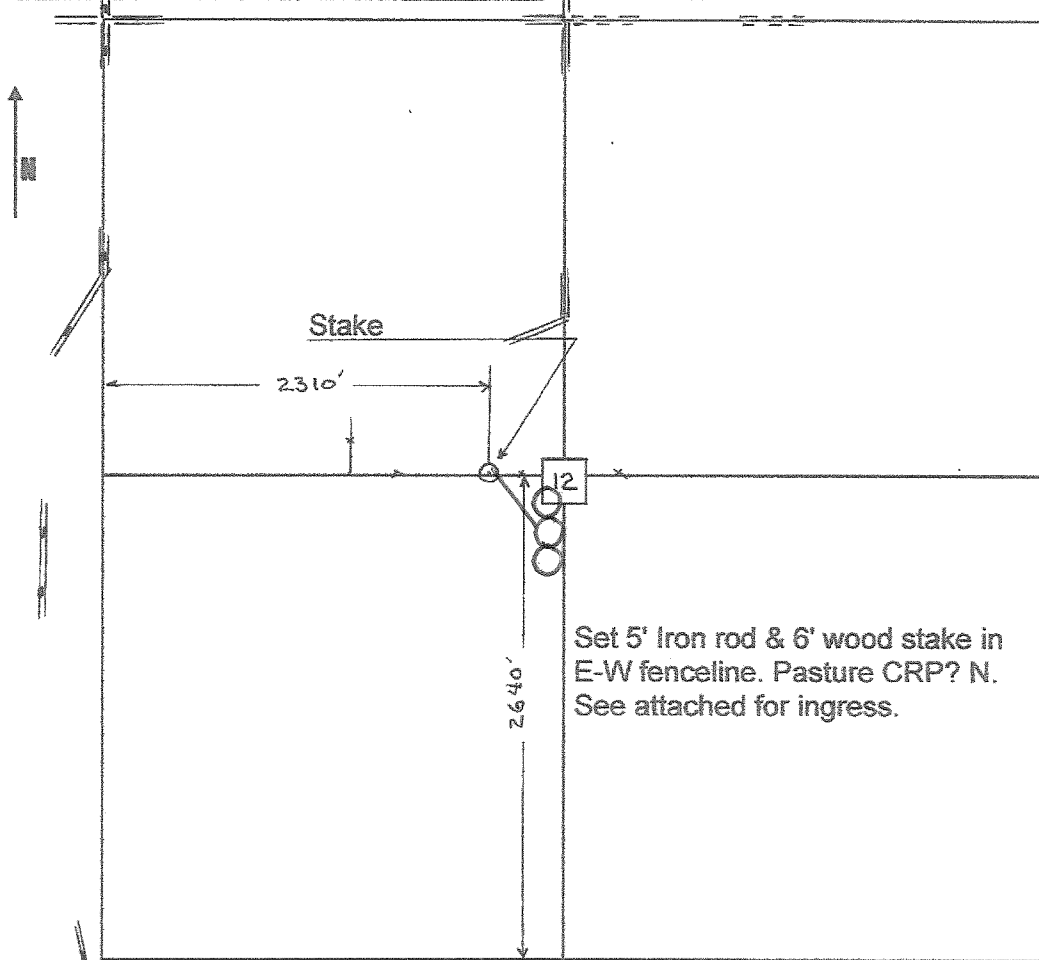
Location

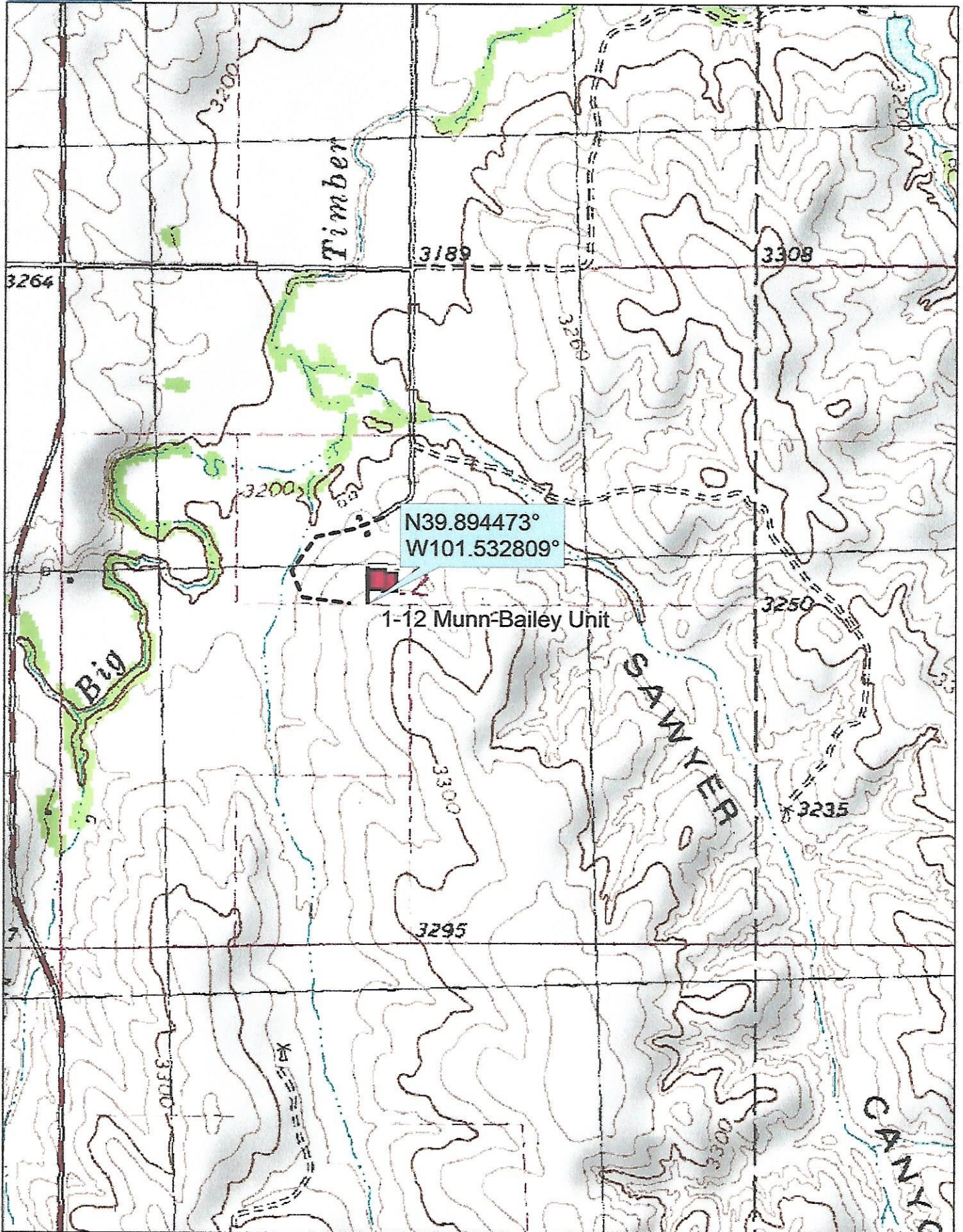
Murfin Drilling
250 N Water
Suite 300
Wichita, Ks. 67202

Elevation 3270 Gr.

Ordered By: Shauna

Scale 1"=1000'

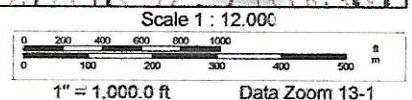




Data use subject to license

© DeLorme. Topo North America™ 9.

www.delorme.com



Data Zoom 13-1