

F.G. HOLL COMPANY, LLC
 MILLARD LEASE
 SE. 1/4, SECTION 31, T18S, R13W
 BARTON COUNTY, KANSAS

GRAVEL (NW. 60 RD.) ROAD

Notes:

1. Set (2) wood stakes at location site.
2. All flagging Red & Yellow.
3. Overhead power available at E. & W. lines and E. 1/2 of N. line, Sec. 31.
4. Kansas One Call System Inc. should be notified before excavation (1-800-344-7233).
5. CAUTION; Various pipelines in Sec. 31.
6. Contact landowner for best access.
7. Location fell approximately 48' west of a N-S overhead electric line, set alternate 75' west per instructions.

Drillsite Location
 Millard Trust #2-31
 255'E. NE NE SE
 2310'FSL 75'FEL

Ground Elevation = 1881

Y = 646084 X = 1916018

State Plane-NAD 27-Kansas South

Latitude 38.440673

Longitude -98.793583

WGS 84-NAD 83

*Alternate Location
 (75' west of Loc.)
 2310'FSL 150'FEL

Ground Elevation = 1881

Y = 646084 X = 1915943

Latitude 38.440680

Longitude -98.793849

31

STUBBLE

ALT.

O'HD. TRANSMISSION LINE

O'HD. ELECTRIC LINE
 APPROXIMATELY 48' E.
 OF LOCATION

ROAD (NW. 20 AVE.)

GRAVEL (NW. 20 AVE.)

GRAVEL (NW. 20 AVE.)

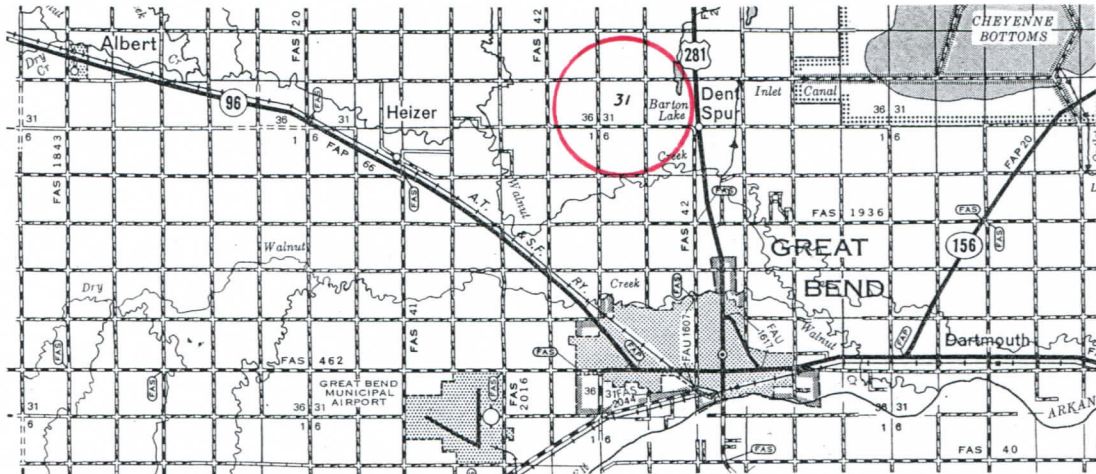
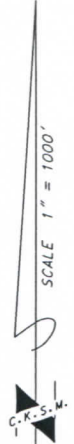
ROAD (NW. 10 AVE.)

GRAVEL (NW. 10 AVE.)

GRAVEL (NW. 10 AVE.)

PAVED (NW. 50 RD.) ROAD

* Ingress and egress to location as shown on this plot is per usage only and may not be legally opened for public use. Contact landowner, tenant and county road department for access.



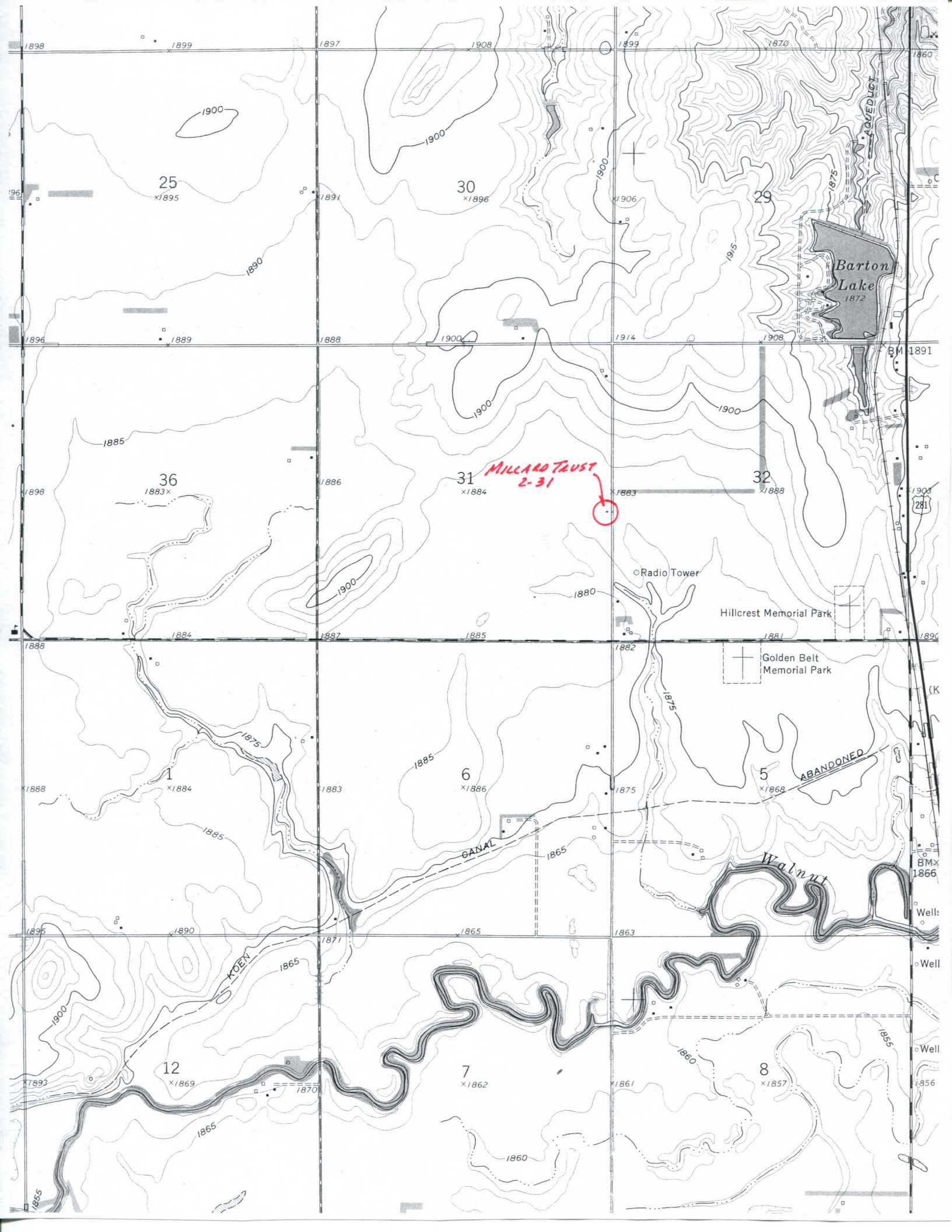
* Controlling data is based upon the best maps and photographs available to us and upon a regular section of land containing 640 acres.

* Approximate section lines were determined using the normal standard of care of oilfield surveyors practicing in the state of Kansas. The section corners, which establish the precise section lines, were not necessarily located, and the exact location of the drillsite location in the section is not guaranteed. Therefore, the operator securing this service and accepting this plot and all other parties relying thereon agree to hold Central Kansas Oilfield Services, Inc., its officers and employees harmless from all losses, costs and expenses and said entities released from any liability from incidental or consequential damages.

* Elevations derived from National Geodetic Vertical Datum.

Date July 20, 2018

CENTRAL KANSAS OILFIELD SERVICES, INC. (620)792-1977



25
x1895

30
x1896

29

Barton
Lake
1872

36
1883x

31
x1884

32
x1888

MILLARD TRUST
2-31

Radio Tower

Hillcrest Memorial Park

Golden Belt
Memorial Park

1
x1884

6
x1886

5
x1868

ABANDONED

12
x1869

7
x1862

8
x1857

Walnut

BM 1891

1903
281

(K)

BMx
1866

Well

Well

Well

1856