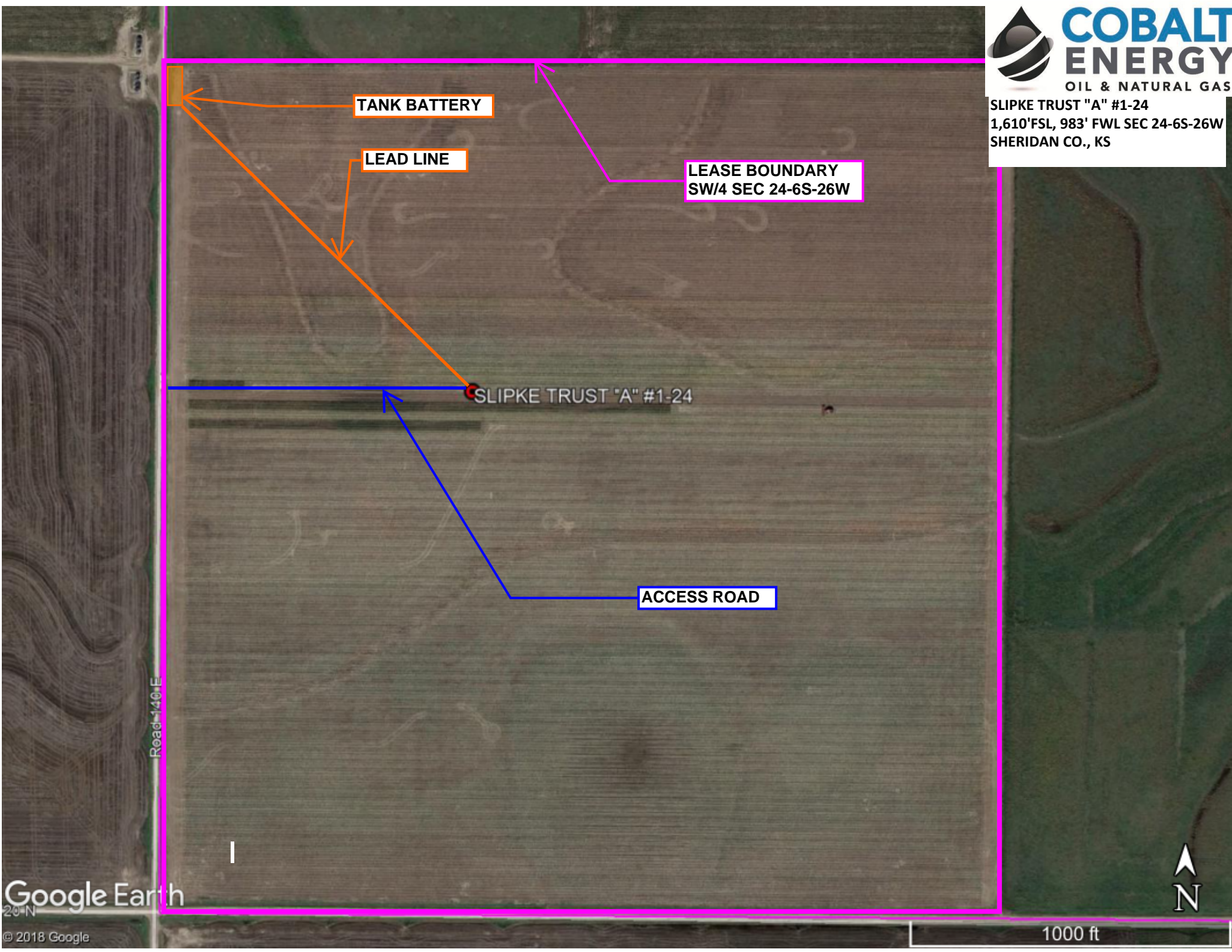




**COBALT
ENERGY**
OIL & NATURAL GAS

SLIPKE TRUST "A" #1-24
1,610'FSL, 983' FWL SEC 24-6S-26W
SHERIDAN CO., KS



TANK BATTERY

LEAD LINE

LEASE BOUNDARY
SW/4 SEC 24-6S-26W

SLIPKE TRUST "A" #1-24

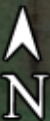
ACCESS ROAD

Road-140-E

Google Earth

20°N

© 2018 Google



1000 ft