

KANSAS CORPORATION COMMISSION
OIL & GAS CONSERVATION DIVISION

TEMPORARY ABANDONMENT WELL APPLICATION

OPERATOR: License#
Name:
Address 1:
Address 2:
City: State: Zip:
Contact Person:
Phone:
Contact Person Email:
Field Contact Person:
Field Contact Person Phone:

API No. 15-
Spot Description:
Sec. Twp. S. R.
GPS Location: Lat: Long:
Datum: NAD27 NAD83 WGS84
County: Elevation:
Lease Name: Well #:
Well Type: Oil Gas OG WSW Other:
SWD Permit #: ENHR Permit #:
Gas Storage Permit #:
Spud Date: Date Shut-In:

Table with 7 columns: Conductor, Surface, Production, Intermediate, Liner, Tubing. Rows include Size, Setting Depth, Amount of Cement, Top of Cement, Bottom of Cement.

Casing Fluid Level from Surface: How Determined? Date:
Casing Squeeze(s): to w / sacks of cement, to w / sacks of cement. Date:
Do you have a valid Oil & Gas Lease? Yes No
Depth and Type: Junk in Hole at Tools in Hole at Casing Leaks: Yes No Depth of casing leak(s):
Type Completion: ALT. I ALT. II Depth of: DV Tool: w / sacks of cement Port Collar: w / sack of cement
Packer Type: Size: Inch Set at: Feet
Total Depth: Plug Back Depth: Plug Back Method:

Geological Data:

Table with 4 columns: Formation Name, Formation Top, Formation Base, Completion Information. Rows 1 and 2.

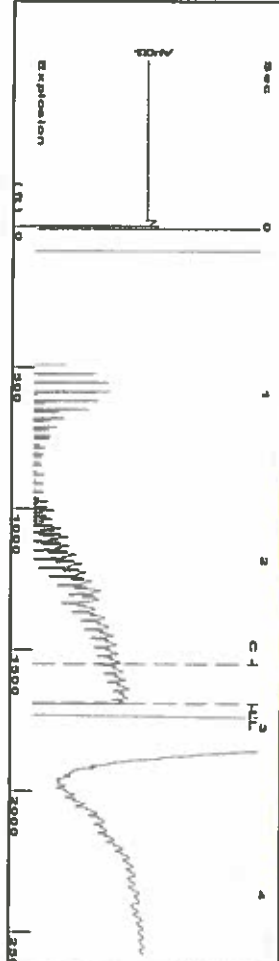
UNDER PENALTY OF PERJURY I HEREBY ATTEST THAT THE INFORMATION CONTAINED HEREIN IS TRUE AND CORRECT TO THE BEST OF MY KNOWLEDGE

Submitted Electronically

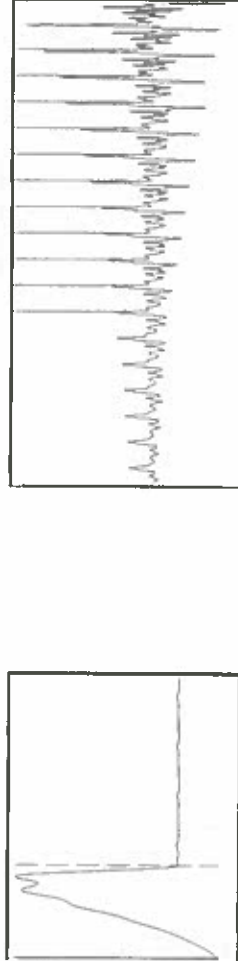
Form with fields: Do NOT Write in This Space - KCC USE ONLY, Date Tested, Results, Date Plugged, Date Repaired, Date Put Back in Service, Review Completed by, Comments, TA Approved: Yes Denied, Date.

Mail to the Appropriate KCC Conservation Office:

Table with 2 columns: Office Address, Phone. Rows for KCC District Office #1, #2, #3, #4.



Filter Type High Pass
 Manual Acoustic Velocity 1174.07 ft/s
 Automatic Collar Count Yes
 Manual JTS/Sec 18.5185
 Time 2.857 sec
 Joints 53.2661 Jts
 Depth 1688.54 ft



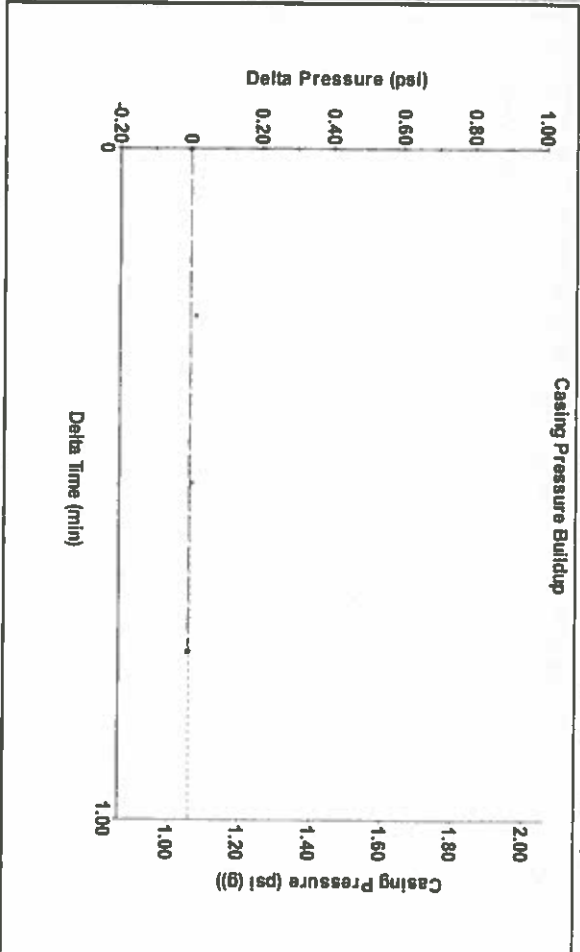
Analysis Method: Automatic

Group: Merit Energy Company-Ulysses Well: Koenig A-4 (acquired on: 09/27/18 14:46:29)

Production Current	Potential	Casing Pressure	Producing
Oil -*- BBL/D	Oil -*- BBL/D	1.1 psi (g)	Annular Gas Flow 0 Mscf/D
Water -*- BBL/D	Water -*- BBL/D	Casing Pressure Buildup -0.003 psi	% Liquid 100 %
Gas -*- Mscf/D	Gas -*- Mscf/D	0.75 min	
IPR Method Vogel	IPR Method Vogel	Gas/Liquid Interface Pressure 1.8 psi (g)	
PBHP/SBHP -*-	PBHP/SBHP -*-		
Production Efficiency 0.0	Production Efficiency 0.0		
Oil 40 deg API	Liquid Level Depth 1688.54 ft		
Water 1.05 Sp.Gr./H2O	Pump Intake Depth 5424.00 ft		
Gas 0.80 Sp.Gr./AIR	Formation Depth 5440.00 ft		
Acoustic Velocity 1182.03 ft/s			

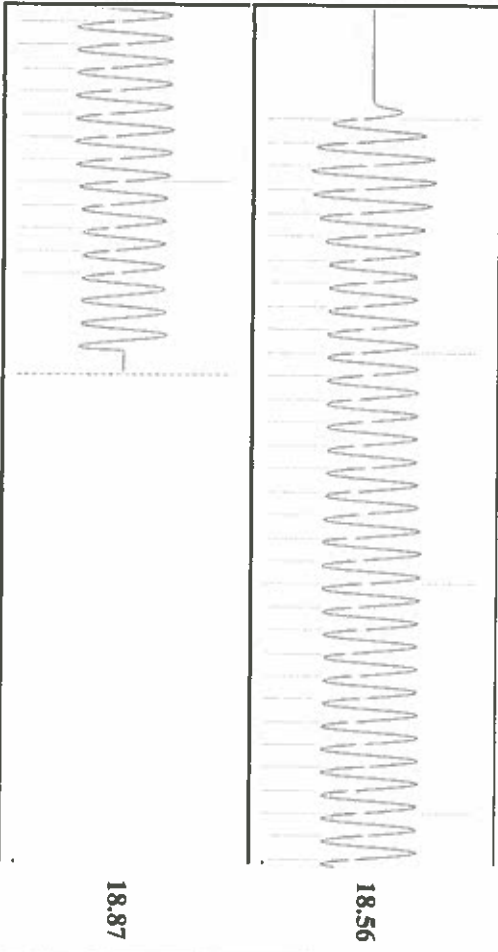


Pump Intake 1216.6 psi (g)
 Producing BHP 1223.9 psi (g)
 Static BHP -*- psi (g)



Change in Pressure -0.00 psi
 Change in Time 0.75 min
 PT9522 Range
 0 - 7 psi

Group: Merit Energy Company-Ulysses Well: Koenig A-4 (acquired on: 09/27/18 14:46:29)



Acoustic Velocity 1182.03 ft/s
 Joints Per Second 18.6441 Jts/sec
 Depth to liquid level 1688.54 ft
 Automatic Collar Count Yes
 Joints counted 44
 Joints to liquid level 53.2661
 Filter Width 16.5185
 Time to 1st Collar 0.26
 2.62

STATE OF KANSAS

CORPORATION COMMISSION
CONSERVATION DIVISION
DISTRICT No. 1
210 E. FRONTVIEW, SUITE A
DODGE CITY, KS 67801



PHONE: 620-682-7933
<http://kcc.ks.gov/>

GOVERNOR JEFF COLYER, M.D.

SHARI FEIST ALBRECHT, CHAIR | JAY SCOTT EMLER, COMMISSIONER | DWIGHT D. KEEN, COMMISSIONER

October 09, 2018

Katherine McClurkan
Merit Energy Company, LLC
13727 Noel Road, Suite 1200
Dallas, TX 75240

Re: Temporary Abandonment
API 15-081-21023-00-01
Koenig A 4
SE/4 Sec.04-29S-34W
Haskell County, Kansas

Dear Katherine McClurkan:

"Your temporary abandonment (TA) application for the well listed above has been approved. In accordance with K.A.R. 82-3-111 the TA status of this well will expire 10/09/2019.

- * If you return this well to service or plug it, please notify the District Office.
- * If you sell this well you are required to file a Transfer of Operator form, T-1.
- * If the well will remain temporarily abandoned, you must submit a new TA application, CP-111, before 10/09/2019.

You may contact me at the number above if you have questions.

Very truly yours,

Michael Maier"