

KANSAS CORPORATION COMMISSION
OIL & GAS CONSERVATION DIVISION

TEMPORARY ABANDONMENT WELL APPLICATION

OPERATOR: License# _____
 Name: _____
 Address 1: _____
 Address 2: _____
 City: _____ State: _____ Zip: _____ + _____
 Contact Person: _____
 Phone:(_____) _____
 Contact Person Email: _____
 Field Contact Person: _____
 Field Contact Person Phone: (_____) _____

API No. 15- _____
 Spot Description: _____
 _____ - _____ - _____ - _____ Sec. _____ Twp. _____ S. R. _____ E W
 _____ feet from N / S Line of Section
 _____ feet from E / W Line of Section
 GPS Location: Lat: _____, Long: _____
(e.g. xx.xxxxx) (e.g. -xxx.xxxxx)
 Datum: NAD27 NAD83 WGS84
 County: _____ Elevation: _____ GL KB
 Lease Name: _____ Well #: _____
 Well Type: (check one) Oil Gas OG WSW Other: _____
 SWD Permit #: _____ ENHR Permit #: _____
 Gas Storage Permit #: _____
 Spud Date: _____ Date Shut-In: _____

	Conductor	Surface	Production	Intermediate	Liner	Tubing
Size						
Setting Depth						
Amount of Cement						
Top of Cement						
Bottom of Cement						

Casing Fluid Level from Surface: _____ How Determined? _____ Date: _____
 Casing Squeeze(s): _____ to _____ w / _____ sacks of cement, _____ to _____ w / _____ sacks of cement. Date: _____
(top) (bottom) (top) (bottom)
 Do you have a valid Oil & Gas Lease? Yes No
 Depth and Type: Junk in Hole at _____ Tools in Hole at _____ Casing Leaks: Yes No Depth of casing leak(s): _____
(depth) (depth)
 Type Completion: ALT. I ALT. II Depth of: DV Tool: _____ w / _____ sacks of cement Port Collar: _____ w / _____ sack of cement
(depth) (depth)
 Packer Type: _____ Size: _____ Inch Set at: _____ Feet
 Total Depth: _____ Plug Back Depth: _____ Plug Back Method: _____

Geological Data:

Formation Name	Formation Top	Formation Base	Completion Information
1. _____	At: _____	to _____ Feet	Perforation Interval _____ to _____ Feet or Open Hole Interval _____ to _____ Feet
2. _____	At: _____	to _____ Feet	Perforation Interval _____ to _____ Feet or Open Hole Interval _____ to _____ Feet

UNDER PENALTY OF PERJURY I HEREBY ATTEST THAT THE INFORMATION CONTAINED HEREIN IS TRUE AND CORRECT TO THE BEST OF MY KNOWLEDGE

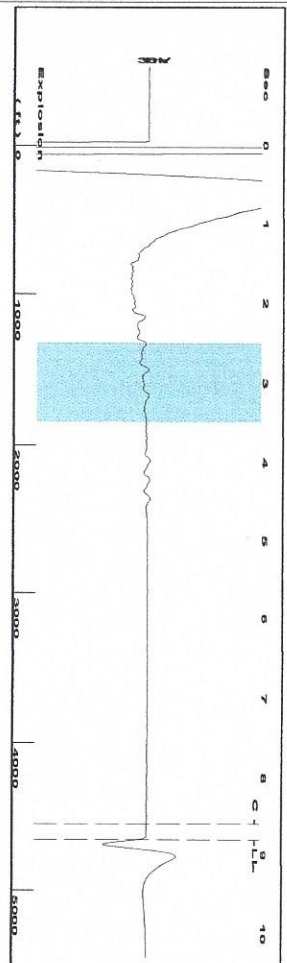
Submitted Electronically

Do NOT Write in This Space - KCC USE ONLY	Date Tested: _____	Results: _____	Date Plugged: _____	Date Repaired: _____	Date Put Back in Service: _____
	Review Completed by: _____ Comments: _____				
TA Approved: <input type="checkbox"/> Yes <input type="checkbox"/> Denied Date: _____					

Mail to the Appropriate KCC Conservation Office:

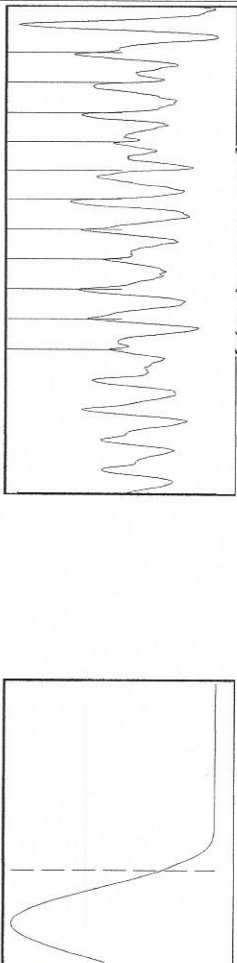
	KCC District Office #1 - 210 E. Frontview, Suite A, Dodge City, KS 67801	Phone 620.682.7933
	KCC District Office #2 - 3450 N. Rock Road, Building 600, Suite 601, Wichita, KS 67226	Phone 316.337.7400
	KCC District Office #3 - 137 E. 21st St., Chanute, KS 66720	Phone 620.902.6450
	KCC District Office #4 - 2301 E. 13th Street, Hays, KS 67601-2651	Phone 785.261.6250

Group: Liberal TAD Wells Well: Boles F1 (acquired on: 10/21/18 13:33:14)



Filter Type High Pass
Manual Acoustic Velo 1035.95 ft/s
Automatic Collar Count Yes
Manual JTS/sec 16.3399

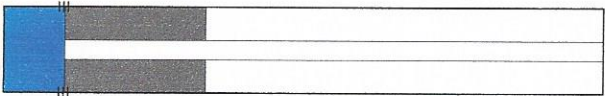
2.5 to 3.5 (Sec) |



Analysis Method: Automatic

Group: Liberal TAD Wells Well: Boles F1 (acquired on: 10/21/18 13:33:14)

Production	Potential	Casing Pressure	Static
Oil -*- Water -*- Gas -*-	-*- BBL/D -*- BBL/D -*- Mscf/D	7.1 psi (g) Casing Pressure Buildup -0.035 psi 3.50 min Gas/Liquid Interface Pressure 10.5 psi (g)	Oil Column Height MD 0 ft
IPR Method PBHP/SBHP Production Efficiency	Vogel -*- 0.0	Liquid Level Depth 4658.92 ft Pump Intake Depth 6606.00 ft Formation Depth 6615.00 ft	Water Column Height MD 1956 ft
Oil 40 deg API Water 1.05 Sp.Gr./H2O Gas 0.92 Sp.Gr./AIR		Acoustic Velocity 1059.21 ft/s	Static BHP 899.8 psi (g)

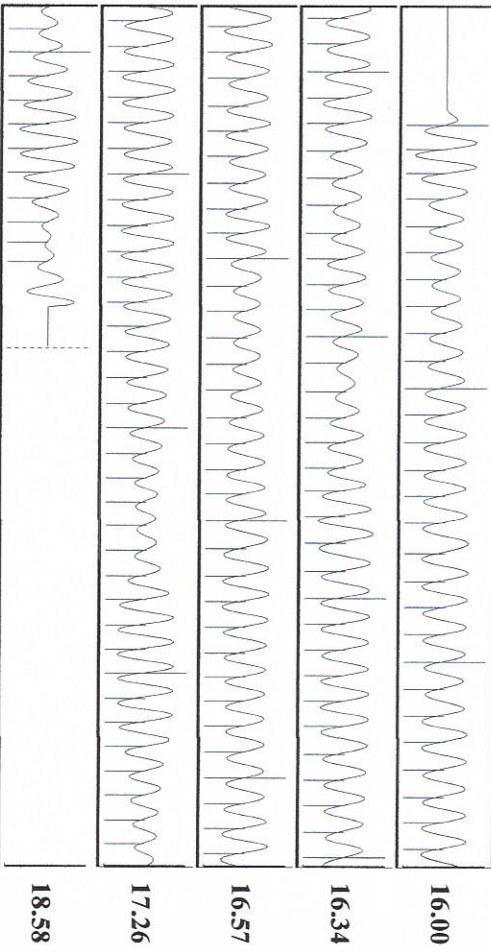


Group: Liberal TAD Wells Well: Boles F1 (acquired on: 10/21/18 13:33:14)



Change in Pressure -0.03 psi
Change in Time 3.50 min
PT11249 Range
0 - ? psi

Group: Liberal TAD Wells Well: Boles F1 (acquired on: 10/21/18 13:33:14)



Acoustic Velocity	1059.21 ft/s	Joints counted	139
Joints Per Second	16.7067 Jts/sec	Joints to liquid level	146.969
Depth to liquid level	4658.92 ft	Filter Width	14.3399
Automatic Collar Count	Yes	Time to 1st Collar	0.272

Shot @ 300' 04"

STATE OF KANSAS

CORPORATION COMMISSION
CONSERVATION DIVISION
DISTRICT No. 1
210 E. FRONTVIEW, SUITE A
DODGE CITY, KS 67801



PHONE: 620-682-7933
<http://kcc.ks.gov/>

GOVERNOR JEFF COLYER, M.D.

SHARI FEIST ALBRECHT, CHAIR | JAY SCOTT EMLER, COMMISSIONER | DWIGHT D. KEEN, COMMISSIONER

October 23, 2018

Katherine McClurkan
Merit Energy Company, LLC
13727 Noel Road, Suite 1200
Dallas, TX 75240

Re: Temporary Abandonment
API 15-175-21669-00-00
Boles F 1
NW/4 Sec.02-35S-34W
Seward County, Kansas

Dear Katherine McClurkan:

"Your temporary abandonment (TA) application for the well listed above has been approved. In accordance with K.A.R. 82-3-111 the TA status of this well will expire 10/23/2019.

- * If you return this well to service or plug it, please notify the District Office.
- * If you sell this well you are required to file a Transfer of Operator form, T-1.
- * If the well will remain temporarily abandoned, you must submit a new TA application, CP-111, before 10/23/2019.

You may contact me at the number above if you have questions.

Very truly yours,

Michael Maier"